

HAND BOOK *of* GASOLINE
629 AUTOMOBILES

2
.A849h



1 9 0 8

HAND BOOK OF
GASOLINE
AUTOMOBILES

HAND BOOK OF

GASOLINE AUTOMOBILES

FOR THE INFORMATION OF THE PUBLIC
WHO ARE INTERESTED IN
THEIR MANUFACTURE
AND USE

1908



ASSOCIATION OF LICENSED AUTOMOBILE
MANUFACTURERS

7 EAST FORTY-SECOND STREET, NEW YORK, U. S. A.

FIFTH ANNUAL ANNOUNCEMENT

THE Hand Book of Gasoline Automobiles is issued annually by the Association of Licensed Automobile Manufacturers in the interest of its members who are the leading American manufacturers of gasoline cars, their dealers and those interested in the purchase of a high-grade automobile. It has definitely taken its place as a permanent annual publication, and is the accepted standard authority on the subject with which it deals. In its illustrations and specifications are fully and correctly described the product of the leading American manufacturers of automobiles, as well as representing the leading importers of gasoline cars which are licensed under the Selden patent.

In the early Seventies, George B. Selden experimented with road locomotion, finally building an internal combustion engine until his success resulted in the application for a patent on May 8, 1879. This was about five years before Benz and Daimler operated their petrol vehicles in Germany. Selden's patent No. 549,160 was granted by the United States Patent Office, November 5, 1895, and in it were granted the exclusive rights for a period of seventeen years, to manufacture, sell and use his invention. The patent covers broadly all gasoline automobiles which are accepted as commercially practical. That the United States Patent Office recognized the importance of this patent is shown by the report of the Commissioner which reads as follows: "Selden in 1895, received a patent, November 5th, No. 549,160, which may be considered the

pioneer invention in the application of compression gas engine to road or horseless carriage use."

The leading manufacturers and importers, after a thorough investigation, resulting in their conviction of its validity, have protected themselves, their dealers and the users of their product by securing a license under this patent. These licensees then organized the Association of Licensed Automobile Manufacturers, to protect their rights and that of their dealers and users under this patent and under the four hundred other patents in the control of its members as against those who used patented automobile improvements without regard to the rights of others. There is no combination among these manufacturers and importers and every one of them conducts his business entirely independent of the others, and among them all a free competition is maintained. The only bond between the companies represented herein is their recognition of this patent and the conviction that such recognition is a guarantee that the purchasers of their machines are guaranteed protection from the liability of suits resulting from the unlicensed use of the rights of the pioneer.

The benefits of the organization have finally become apparent to the public in improved and advanced construction. It has been the aim of the Association, aside from the protection of its members in their patent rights, to conserve the interests of the manufacturers and purchasers of cars by producing cars of merit, and the results of these endeavors are apparent, for it is a well-known fact that the cars manufactured by the members of the Association, that are receiving this co-operation, are superior in every detail to those not deriving these accrued and cumulative benefits.

ORGANIZATION OF THE
ASSOCIATION OF
LICENSED AUTOMOBILE
MANUFACTURERS

ORGANIZATION OF ASSOCIATION OF LICENSED AUTOMOBILE MANUFACTURERS

OFFICERS

Charles Clifton, <i>President</i>	The George N. Pierce Company
Thomas Henderson, <i>Vice-President</i>	Winton Motor Carriage Company
L. H. Kittredge, <i>Secretary</i>	Peerless Motor Car Company
H. H. Franklin, <i>Treasurer</i>	H. H. Franklin Manufacturing Company

EXECUTIVE COMMITTEE

Charles Clifton	The George N. Pierce Company
S. T. Davis, Jr.	Locomobile Company of America
W. E. Metzger	Cadillac Motor Car Company
Herbert Lloyd	Electric Vehicle Company
Thomas Henderson	Winton Motor Carriage Company

TRADES COMMITTEE

W. E. Metzger	Cadillac Motor Car Company
George Pope	Pope Manufacturing Company
H. H. Franklin	H. H. Franklin Manufacturing Company
C. C. Hildebrand	Stevens-Duryea Company
Thomas Henderson	Winton Motor Carriage Company

COMMITTEE ON TIRES

Albert L. Pope	Pope Manufacturing Company
L. H. Kittredge	Peerless Motor Car Company
S. D. Waldon	Packard Motor Car Company

HAND BOOK COMMITTEE

L. H. Kittredge	Peerless Motor Car Company
W. E. Metzger	Cadillac Motor Car Company
Thomas Henderson	Winton Motor Carriage Company

SHOW COMMITTEE

George Pope	Pope Manufacturing Company
Charles Clifton	The George N. Pierce Company
M. L. Downs, <i>Secretary</i>	A.L.A.M.

TRAFFIC COMMITTEE

S. D. Waldon	Packard Motor Car Company
Thomas Henderson	Winton Motor Carriage Company
E. P. Chalfant	Waltham Manufacturing Company

ADVERTISING AND PUBLICITY COMMITTEE

F. L. Smith	Olds Motor Works
E. R. Thomas	E. R. Thomas Motor Company
Charles B. Shanks	Winton Motor Carriage Company
J. A. Kingman	Locomobile Company of America

NEW YORK OFFICE

M. J. Budlong	<i>General Manager</i>
-------------------------	------------------------

PATENT DEPARTMENT

Hermann F. Cuntz	<i>Manager</i>
----------------------------	----------------

AGENCY DEPARTMENT

Charles A. Wardel	<i>Manager</i>
-----------------------------	----------------

TRAFFIC DEPARTMENT

James S. Marvin	<i>Manager</i>
---------------------------	----------------

ADVERTISING AND PUBLICITY DEPARTMENT

Harry T. Clinton	<i>Manager</i>
----------------------------	----------------

MECHANICAL BRANCH

A. L. Riker, <i>Chairman</i>	Locomobile Company of America
Coker F. Clarkson, <i>Secretary</i>	A.L.A.M.
Henry Souther, <i>Metallurgist</i>	Hartford, Conn.

COMMITTEE ON TESTS

A. L. Riker (<i>Ex-officio</i>)	Locomobile Company of America
H. E. Coffin (<i>Chairman</i>)	E. R. Thomas Detroit Company
H. P. Maxim	Electric Vehicle Company
John Wilkinson	H. H. Franklin Manufacturing Company
Russell Huff	Packard Motor Car Company
J. G. Utz	E. R. Thomas Detroit Company

ASSOCIATION PATENTS COMPANY

DIRECTORS

Charles Clifton, <i>President</i>	The George N. Pierce Company
G. H. Stilwell, <i>Vice-President</i>	H. H. Franklin Manufacturing Company
E. H. Cutler, <i>Treasurer</i>	Knox Automobile Company
E. R. Thomas	E. R. Thomas Motor Company
James H. Becker	Elmore Manufacturing Company
Elwood Haynes	Haynes Automobile Company

ALPHABETICAL INDEX
OF MEMBERS
TOGETHER WITH AN
INDEX OF TRADE NAMES

ALPHABETICAL INDEX

	PAGES		PAGES
Apperson Brothers Automobile Co.	97	Walter C. Martin	131
Auto Import Co.	131	Northern Motor Car Co.	30-33
Autocar Co.	79-81	Olds Motor Works	98-101
Sidney B. Bowman Automobile Co.	131	Packard Motor Car Co.	50-55
Buick Motor Co.	125-129	Peerless Motor Car Co.	56-61
Cadillac Motor Car Co.	68-74	The George N. Pierce Co.	41-44
Corbin Motor Vehicle Corporation	64-67	Pope Manufacturing Co.	94
Darracq Motor Car Co.	131	Pope Motor Car Co.	95, 96
De Dietrich Import Co.	131	Royal Motor Car Co.	62, 63
Electric Vehicle Co.	45-49	Alden Sampson, 2nd	
Elmore Manufacturing Co.	75, 76	Selden Motor Vehicle Co.	130
H. H. Franklin Mfg. Co.	18-25	Simplex Automobile Co. (Walter C. Whitehead)	
Haynes Automobile Co.	102, 103	F. B. Stearns Co.	77, 78
Hewitt Motor Co.	115	Stevens-Duryea Co.	89-93
Hol-Tan Co.	131	Studebaker Automobile Co.	116-119
Knox Automobile Co.	34-40	E. R. Thomas Detroit Co.	111
Locomobile Co. of America	82-87	E. R. Thomas Motor Co.	112-114
Lozier Motor Co.	107-110	Walter Automobile Co.	88
Matheson Motor Car Co.	26-29	Waltham Manufacturing Co.	120-124
		Winton Motor Carriage Co.	104-106
		Wyckoff, Church & Partridge	131

Catalogue Request Blanks, 133-141

INDEX OF TRADE NAMES

	PAGES		PAGES
Apperson	97	Martini	131
Autocar	79-81	Matheson	26-29
Buick	125-129	Northern	30-33
Cadillac	68-74	Oldsmobile	98-101
C. G. V.	131	Packard	50-55
Clement-Bayard	131	Peerless	56-61
Clement-Talbot	131	Pierce Great Arrow	41-44
Columbia	45-49	Pope-Hartford	94
Corbin	64-67	Pope Toledo	95, 96
Darracq	131	Rochet-Schneider	131
De Dietrich	131	Rolls-Royce	131
Elmore	75, 76	Royal Tourist	62, 63
English Daimler		Sampson	
F I A T	131	Selden	130
Franklin	18-25	Simplex	
Florenzia	131	Stearns	77, 78
Haynes	102, 103	Stevens-Duryea	89-93
Hewitt	115	Studebaker	116-119
Isotta-Fraschini	131	Thomas	112-114
Itala	131	Thomas Detroit	111
Knox	34-40	Walter	88
Locomobile	82-87	Waltham-Orient	120-124
Locomotrice	131	Winton	104-106
Lozier	107-110		

Catalogue Request Blanks, 133-141

A. L. A. M. HORSE-POWER
RATING

A. L. A. M. HORSE-POWER RATING

IT will be noted throughout the specifications in this year's Hand Book, that in many instances and for the first time the computation of horse-power rating is reckoned from a standard formula. The Mechanical Branch has, for some time, felt the need of a standard formula for computing the horse-power of a motor. The formula given herein was decided upon after a careful canvass of the various members of the Mechanical Branch, consisting of the chief engineers of the various members of the Association.

The formula adopted is $\frac{D^2 \times N}{2.5}$ and based on 1000 feet piston speed per minute. D is the bore of the cylinder, N number of cylinders, and 2.5 the arbitrary constant, based on the average view of the Mechanical Branch as to the power developed by a motor of given size and on actual engine tests. For example—a good four-cylinder motor with 5-inch bore will develop at least 40 horse-power; as 5 inches equal D, being squared and multiplied by 4, the number of cylinders, and divided by the constant 2.5, will give 40-horse-power as a conservative rating for that size of motor. The formula was not intended primarily to be used for racing or contests, but simply as a commercial rating; still there is no reason why it cannot be used equally well for a basis of contests of any character. The same formula was adopted by the Automobile Club of Great Britain and Ireland, now the Royal Automobile Club, and is used as a basis for nearly all the contests held abroad.

ILLUSTRATIONS AND
SPECIFICATIONS

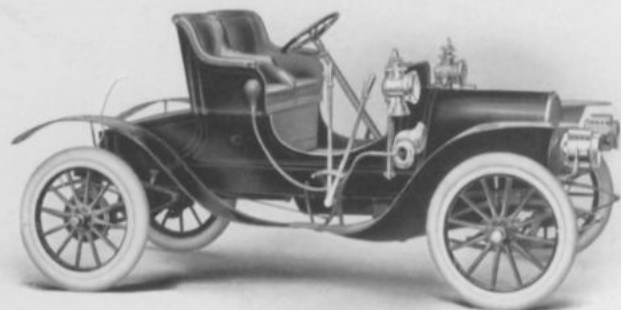
H. H. FRANK-
LIN MFG. CO.

Syracuse, New York

PRICE . . . \$1750

With Cape Top \$1825

With Victoria Top
\$1875



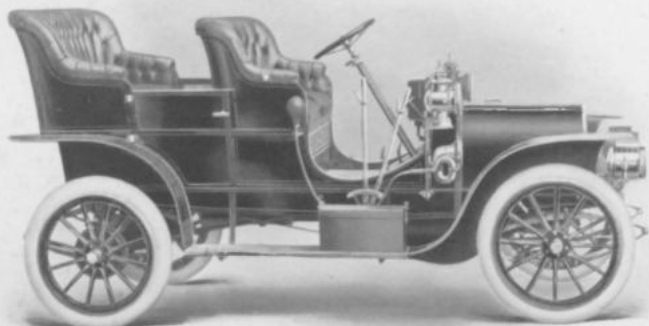
MODEL : G, RUNABOUT.

Color	Royal blue.	Cylinders	Four.
Seating Capacity	Two persons.	Arranged	Vertically, under hood.
Clutch	Disc.	How Cast	Separately.
Wheel Base	90 inches.	Bore	3 $\frac{1}{4}$ inches.
Gauge	54 inches.	Stroke	3 $\frac{1}{4}$ inches.
Tire Dimensions,		Cooling	Air.
Front	30 x 3 inches.	Ignition	Jump spark.
Rear	30 x 3 $\frac{1}{2}$ inches.	Electric Source	Dry batteries.
Brakes	Three. TYPE: Con- tracting on transmission and rear wheels.	Drive	Shaft.
Horse-power	(A.L.A.M. rating), 16.	Transmission	Progressive sliding gear.
		Gear Changes	Three forward, one re- verse.

Descriptive catalogue will be sent upon application to the above-named company

H. H. FRANK-
LIN MFG. CO.
Syracuse, New York

PRICE . . . \$1850
With Extension Top
\$1950



MODEL : G, TOURING.

Color Royal blue.

Seating Capacity . Four persons.

Clutch Disc.

Wheel Base 30 inches.

Gauge 54 inches.

Tire Dimensions,

Front 30 x 3 inches.

Rear 30 x 3½ inches.

Brakes Three. TYPE : Con-
tracting on transmission
and rear wheels.

Horse-power . . . (A.L.A.M. rating), 16.

Cylinders Four.

Arranged Vertically, under hood.

How Cast Separately.

Bore 3¼ inches.

Stroke 3¼ inches.

Cooling Air.

Ignition Jump spark.

Electric Source . Dry batteries.

Drive Shaft.

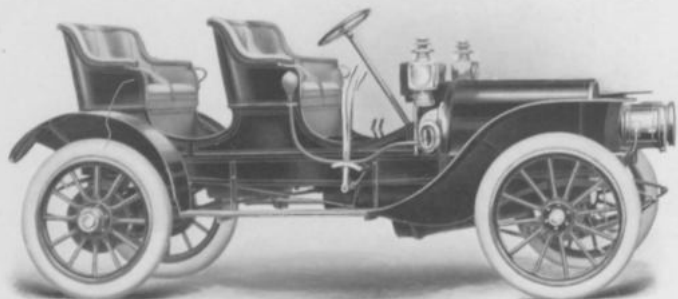
Transmission . . . Progressive sliding gear.

Gear Changes . . . Three forward, one re-
verse.

Descriptive catalogue will be sent upon application to the above-named company

H. H. FRANK-
LIN MFG. CO.
Syracuse, New York

PRICE . . . \$2850



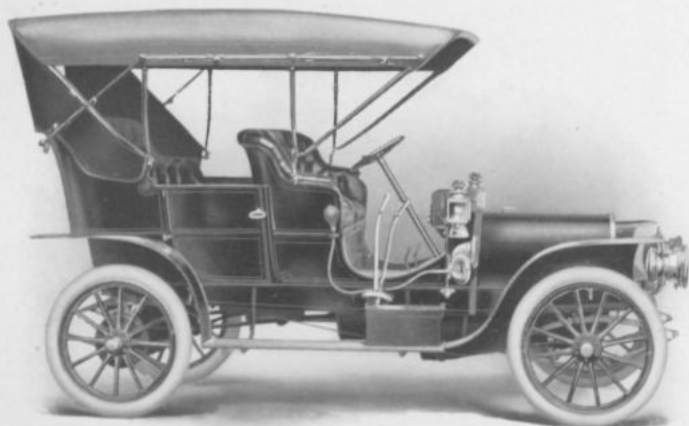
MODEL : D, RUNABOUT.

Color	Royal blue.	Cylinders	Four.
Seating Capacity	Four persons.	Arranged	Vertically, under hood.
Clutch	Disc.	How Cast	Separately.
Wheel Base	105 inches.	Bore	4 $\frac{1}{4}$ inches.
Gauge	54 inches.	Stroke	4 inches.
Tire Dimensions.		Cooling	Air.
Front	34 x 3 $\frac{1}{2}$ inches.	Ignition	Jump spark.
Rear	34 x 4 inches.	Electric Source	Magneto and dry batteries.
Brakes	Three. TYPE: Contracting on transmission and rear wheels.	Drive	Shaft.
Horse-power	(A.L.A.M. rating), 28.	Transmission	Selective sliding gear.
		Gear Changes	Three forward, one reverse.

Descriptive catalogue will be sent upon application to the above-named company

H. H. FRANK-
LIN MFG. CO.
Syracuse, New York

PRICE . . \$2850
With Extension Top
\$2970



MODEL : D, TOURING.

Color	Royal blue.	Cylinders	Four.
Seating Capacity	Five persons.	Arranged	Vertically, under hood.
Clutch	Disc.	How Cast	Separately.
Wheel Base	105 inches.	Bore	4¼ inches.
Gauge	54 inches.	Stroke	4 inches.
Tire Dimensions,		Cooling	Air.
Front	34 x 3½ inches.	Ignition	Jump spark.
Rear	34 x 4 inches.	Electric Source	Magneto and dry batteries.
Brakes	Three. TYPE : Contracting on transmission and rear wheels.	Drive	Shaft.
Horse-power	(A.L.A.M. rating), 28.	Transmission	Selective sliding gear.
		Gear Changes	Three forward, one reverse.

Descriptive catalogue will be sent upon application to the above-named company

H. H. FRANK-
LIN MFG. CO.
Syracuse, New York

PRICE . . . \$4000



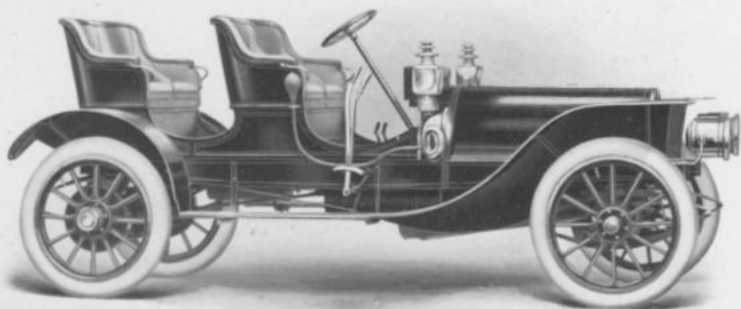
MODEL: D, LANDAULET.

Color	Royal blue.	Cylinders	Four.
Seating Capacity	Five persons.	Arranged	Vertically, under hood.
Clutch	Disc.	How Cast	Separately.
Wheel Base	105 inches.	Bore	4¼ inches.
Gauge	54 inches.	Stroke	4 inches.
Tire Dimensions,		Cooling	Air.
Front	32 x 3½ inches.	Ignition	Jump spark.
Rear	32 x 4 inches.	Electric Source	Magneto and dry batteries.
Brakes	Three. TYPE: Contracting on transmission and rear wheels.	Drive	Shaft.
Horse-power	(A.L.A.M. rating), 28.	Transmission	Selective sliding gear.
		Gear Changes	Three forward, one reverse.

Descriptive catalogue will be sent upon application to the above-named company

H. H. FRANK-
LIN MFG. CO.
Syracuse, New York

PRICE . . . \$4000



MODEL : H, RUNABOUT.

Color Royal blue.

Seating Capacity . Four persons.

Clutch Disc.

Wheel Base . . . 119 inches.

Gauge 54 inches.

Tire Dimensions,

Front 36 x 4 inches.

Rear 36 x 4½ inches.

Brakes Three. TYPE : Con-
tracting on transmission
and rear wheels.

Horse-power . . (A.L.A.M. rating), 42.

Cylinders Six.

Arranged Vertically, under hood.

How Cast Separately.

Bore 4¾ inches.

Stroke 4 inches.

Cooling Air.

Ignition Jump spark.

Electric Source . Magneto and dry bat-
teries.

Drive Shaft.

Transmission . . Selective sliding gear.

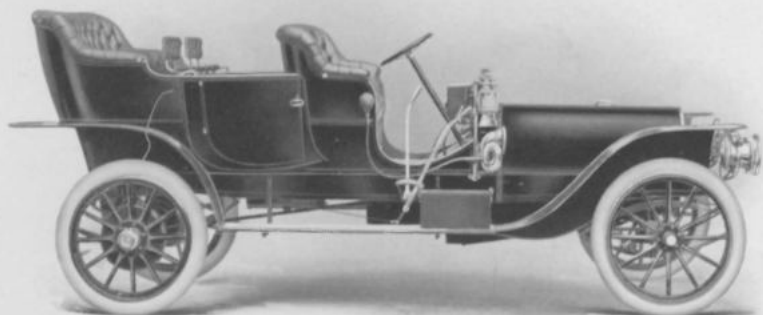
Gear Changes . . . Three forward, one re-
verse.

Descriptive catalogue will be sent upon application to the above-named company

H. H. FRANK-
LIN MFG. CO.
Syracuse, New York

PRICE . . . \$4000

With Extension Top
\$4130



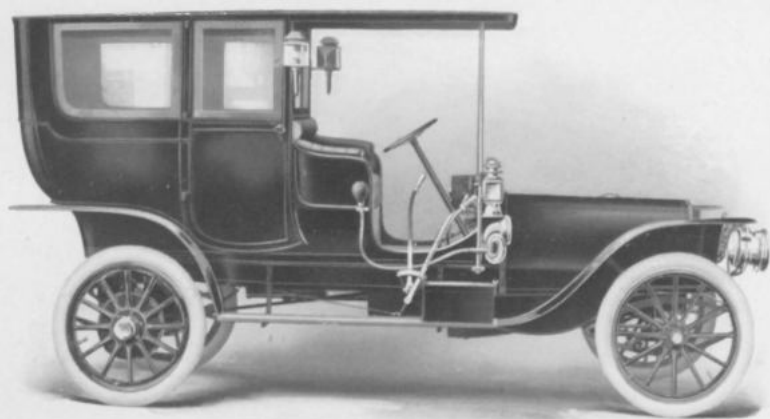
MODEL : H, TOURING.

Color	Royal blue.	Cylinders	Six.
Seating Capacity	Seven persons.	Arranged	Vertically, under hood.
Clutch	Disc.	How Cast	Separately.
Wheel Base	127 inches.	Bore	4¼ inches.
Gauge	54 inches.	Stroke	4 inches.
Tire Dimensions,		Cooling	Air.
Front	36 x 4 inches.	Ignition	Jump spark.
Rear	36 x 4½ inches.	Electric Source	Magneto and dry bat- teries.
Brakes	Three. TYPE: Con- tracting on transmission and rear wheels.	Drive	Shaft.
Horse-power	(A.L.A.M. rating), 42.	Transmission	Selective sliding gear.
		Gear Changes	Three forward, one re- verse.

Descriptive catalogue will be sent upon application to the above-named company

H. H. FRANK-
LIN MFG. CO.
Syracuse, New York

PRICE . . \$5200



MODEL : H, LIMOUSINE.

Color Royal blue.

Seating Capacity . Seven persons.

Clutch Disc.

Wheel Base 127 inches.

Gauge 54 inches.

Tire Dimensions.

Front 34 x 4 inches.

Rear 34 x 4½ inches.

Brakes Three. TYPE: Con-
tracting on transmission
and rear wheels.

Horse-power . . (A.L.A.M. rating), 42.

Cylinders Six.

Arranged Vertically, under hood.

How Cast Separately.

Bore 4¾ inches.

Stroke 4 inches.

Cooling Air.

Ignition Jump spark.

Electric Source . Magneto and dry bat-
teries.

Drive Shaft.

Transmission . . Selective sliding gear.

Gear Changes . . Three forward, one re-
verse.

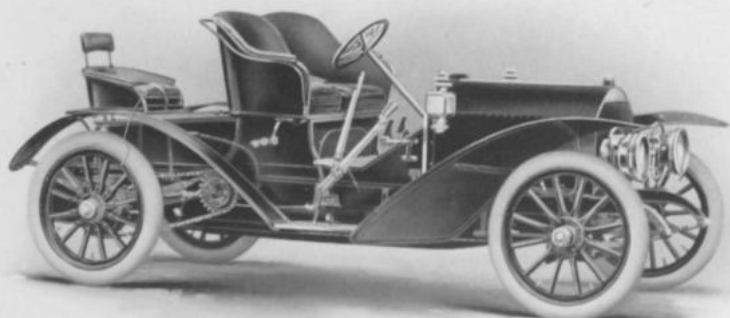
Descriptive catalogue will be sent upon application to the above-named company

**MATHESON
MOTOR CAR
COMPANY**

Wilkesbarre, Pa.

PRICE . . \$5250

With 4 or 5 Bow Cape
Top \$5400



MODEL : RUNABOUT.

Color	Optional.	Cylinders	Four.
Seating Capacity	Three or four persons.	Arranged	Vertically, under hood.
Clutch	Multiple disc.	How Cast	Separately.
Wheel Base	128 inches.	Bore	5 inches.
Gauge	56½ inches.	Stroke	6 inches.
Tire Dimensions.		Cooling	Water.
Front	36 x 4 inches.	Radiator	Honeycomb.
Rear	36 x 5 inches.	Ignition	Make-and-break.
Brakes	Four. TYPE: Contracting on sprocket shafts, operated by foot pedal; expanding in rear wheel drums, operated by emergency lever.	Electric Source	Low tension Bosch magneto and storage battery.
Horse-power	50.	Drive	Double chain.
		Transmission	Selective sliding gear.
		Gear Changes	Four forward, one reverse.

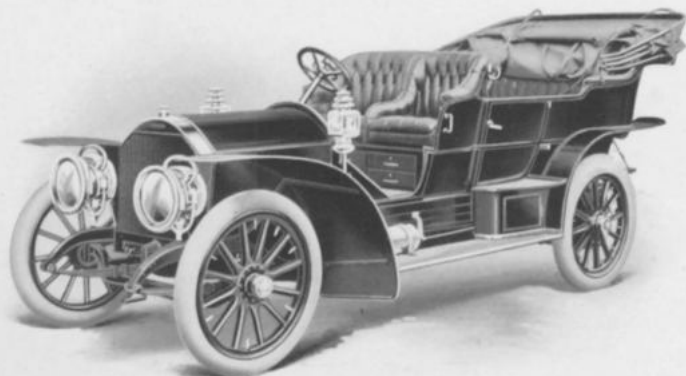
Descriptive catalogue will be sent upon application to the above-named company

MATHESON
MOTOR CAR
COMPANY

Wilkesbarre, Pa.

PRICE . . . \$5500

With 4 or 5 Bow Cape
Top \$8750



MODEL : TOURING CAR.

Color Optional.

Seating Capacity . Seven persons.

Clutch Multiple disc.

Wheel Base 128 inches.

Gauge 56½ inches.

Tire Dimensions,

Front 36 x 4 inches.

Rear 36 x 5 inches.

Brakes Four. TYPE: Contracting on sprocket shafts, operated by foot pedal; expanding in rear wheel drums, operated by emergency lever.

Horse-power . . . 50.

Cylinders Four.

Arranged Vertically, under hood.

How Cast Separately.

Bore 5 inches.

Stroke 6 inches.

Cooling Water.

Radiator Honeycomb.

Ignition Make-and-break.

Electric Source . Low tension Bosch magneto and storage battery.

Drive Double chain.

Transmission . . Selective sliding gear.

Gear Changes . . Four forward, one reverse.

Descriptive catalogue will be sent upon application to the above-named company

MATHESON
MOTOR CAR
COMPANY

Wilkesbarre, Pa.

PRICE . . \$6500



MODEL : LANDAULET.

Color Optional.

Seating Capacity Seven persons.

Clutch Multiple disc.

Wheel Base 128 inches.

Gauge 56½ inches.

Tire Dimensions,

Front 36 x 4 inches.

Rear 36 x 5 inches.

Brakes Four. Type: Contracting on sprocket shafts, operated by foot pedal; expanding in rear wheel drums, operated by emergency lever.

Horse-power 50.

Cylinders Four.

Arranged Vertically, under hood.

How Cast Separately.

Bore 5 inches.

Stroke 6 inches.

Cooling Water.

Radiator Honeycomb.

Ignition Make-and-break.

Electric Source Low tension Bosch magneto and storage battery.

Drive Double chain.

Transmission Selective sliding gear.

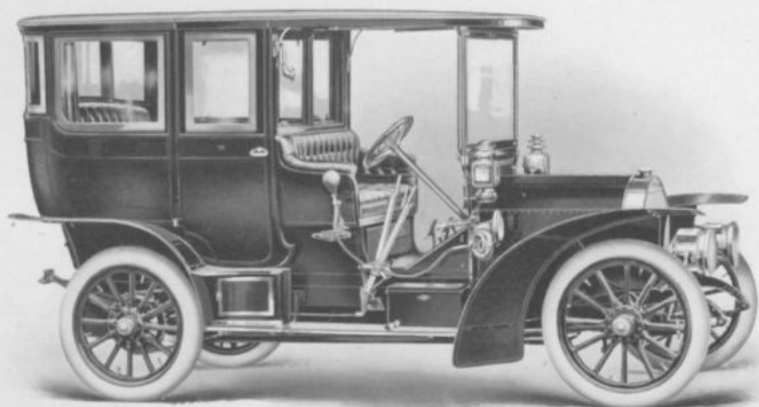
Gear Changes Four forward, one reverse.

Descriptive catalogue will be sent upon application to the above-named company

MATHESON
MOTOR CAR
COMPANY

Wilkesbarre, Pa.

PRICE . . \$6500



MODEL : LIMOUSINE.

Color	Optional.	Cylinders	Four.
Seating Capacity	Seven persons.	Arranged	Vertically, under hood.
Clutch	Multiple disc.	How Cast	Separately.
Wheel Base	128 inches.	Bore	5 inches.
Gauge	56½ inches.	Stroke	6 inches.
Tire Dimensions,		Cooling	Water.
Front	36 x 4 inches.	Radiator	Honeycomb.
Rear	36 x 5 inches.	Ignition	Make-and-break.
Brakes	Four. TYPE: Contracting on sprocket shafts, operated by foot pedal; expanding in rear wheel drums, operated by emergency lever.	Electric Source	Low tension Bosch magneto and storage battery.
Horse-power	50.	Drive	Double chain.
		Transmission	Selective sliding gear.
		Gear Changes	Four forward, one reverse.

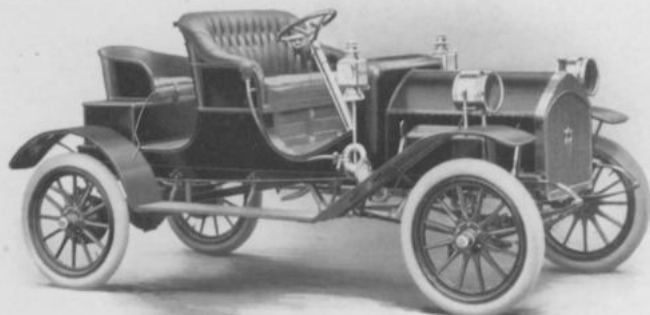
Descriptive catalogue will be sent upon application to the above-named company

NORTHERN
MOTOR CAR
COMPANY

Detroit, Michigan

PRICE . . . \$1600

With Folding Run-
about Top \$1680



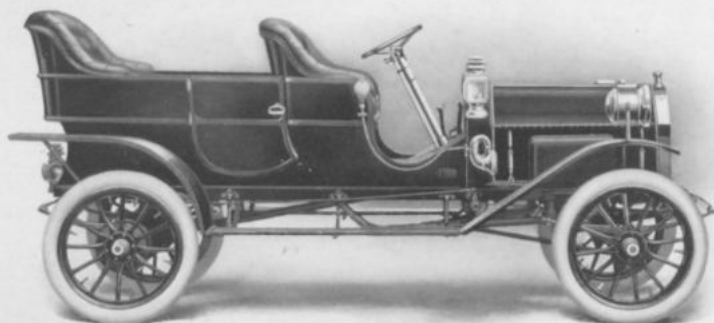
MODEL: C, TOURING RUNABOUT.

Color	Carmine.	Cylinders	Two.
Seating Capacity	Three or four persons.	Arranged	Opposed.
Clutch	Expanding; metal.	How Cast	Separately.
Wheel Base	106 inches.	Bore	5½ inches.
Gauge	56 or 60 inches.	Stroke	5¼ inches.
Tire Dimensions.		Cooling	Water.
Front	32 x 3½ inches.	Radiator	Vertical tube.
Rear	32 x 3½ inches.	Ignition	Jump spark.
Brakes	Two. TYPE: Contracting on rear wheels.	Electric Source	Dry batteries.
Horse-power	(A.L.A.M. rating), 24.	Drive	Shaft.
		Transmission	Planetary.
		Gear Changes	Two forward, one reverse.

Descriptive catalogue will be sent upon application to the above-named company

NORTHERN
MOTOR CAR
COMPANY
Detroit, Michigan

PRICE . . \$1600
With Springfield
Folding Top \$1700



MODEL: C, TONNEAU CAR.

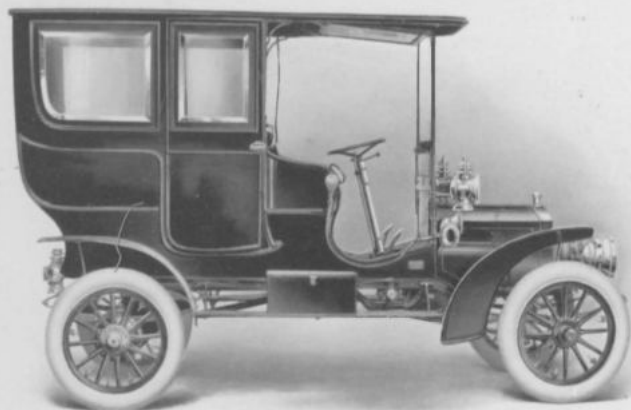
Color	Carmine.	Cylinders	Two.
Seating Capacity .	Five persons.	Arranged	Opposed.
Clutch	Expanding; metal.	How Cast	Separately.
Wheel Base	106 inches.	Bore	5½ inches.
Gauge	56 or 60 inches.	Stroke	5¼ inches.
Tire Dimensions.		Cooling	Water.
Front	32 x 3½ inches.	Radiator	Vertical tube.
Rear	32 x 3½ inches.	Ignition	Jump spark.
Brakes	Two. TYPE: Contracting on rear wheels.	Electric Source .	Dry batteries.
Horse-power	(A.L.A.M. rating), 24.	Drive	Shaft.
		Transmission . .	Planetary.
		Gear Changes . .	Two forward, one reverse.

Descriptive catalogue will be sent upon application to the above-named company

NORTHERN
MOTOR CAR
COMPANY

Detroit, Michigan

PRICE . . . \$2800



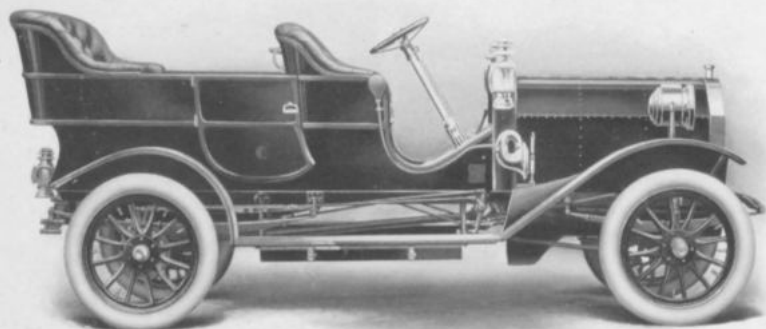
MODEL: C, LIMOUSINE.

Color	Royal blue.	Cylinders	Two.
Seating Capacity	Seven persons.	Arranged	Horizontally, opposed, under hood.
Clutch	Expanding; metal.	How Cast	Separately.
Wheel Base	106 inches.	Bore	5½ inches.
Gauge	56 or 60 inches.	Stroke	5¼ inches.
Tire Dimensions,		Cooling	Water.
Front	32 x 4 inches.	Radiator	Vertical tube.
Rear	32 x 4 inches.	Ignition	Jump spark.
Brakes	Two. TYPE: Contracting on rear wheels.	Electric Source	Dry batteries.
Horse-power	(A.L.A.M. rating), 24.	Drive	Shaft.
		Transmission	Planetary.
		Gear Changes	Two forward, one re- verse.

Descriptive catalogue will be sent upon application to the above-named company.

NORTHERN
MOTOR CAR
COMPANY
Detroit, Michigan

PRICE . . . \$3500
With Springfield
Leather or Three-ply
Mackintosh Top \$3750



MODEL: L, TONNEAU CAR.

Color Carmine.

Seating Capacity . Seven persons.

Clutch Cone.

Wheel Base . . . 114 inches.

Gauge 56 inches.

Tire Dimensions,

Front 34 x 4½ inches.

Rear 34 x 4½ inches.

Brakes Four. TYPE: Two contracting; two expanding on rear wheels.

Horse-power . . (A.I.A.M. rating), 40.

Cylinders . . . Four.

Arranged . . . Vertically, under hood.

How Cast . . . Separately.

Bore 5 inches.

Stroke 5 inches.

Cooling Water.

Radiator . . . Flat tube, vertical.

Ignition . . . Jump spark.

Electric Source . Dry and storage batteries.

Drive Shaft.

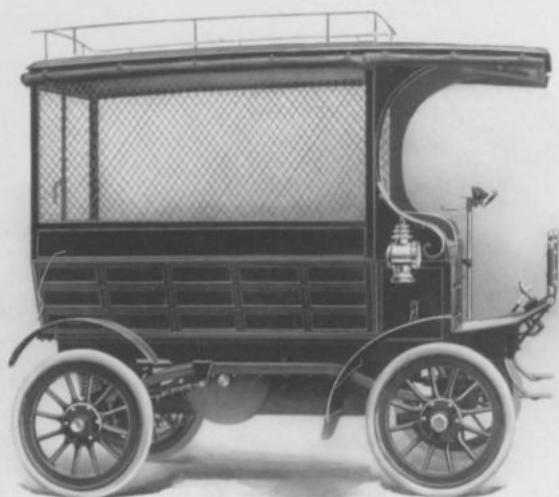
Transmission . Sliding gear in rear axle.

Gear Changes . Three forward, one reverse.

Descriptive catalogue will be sent upon application to the above-named company

KNOX AUTO-
MOBILE CO.
Springfield, Mass.

PRICE . . \$1800



MODEL : 41, DELIVERY WAGON.

Color Red or green.

Carrying Capacity 1500 pounds.

Clutch Multiple disc.

Wheel Base 78 inches.

Gauge 56 inches.

Tire Dimensions,

Front 32 x 3½ inches.

Rear 32 x 3½ inches.

Brakes Three. TYPE : Foot and hand on transmission and differential.

Horse-power (A.L.A.M. rating), 10.

Cylinders One.

Arranged Horizontally, under body.

Bore 5 inches.

Stroke 8 inches.

Cooling Air.

Ignition Jump spark.

Electric Source Dry batteries and coil.

Drive Single chain.

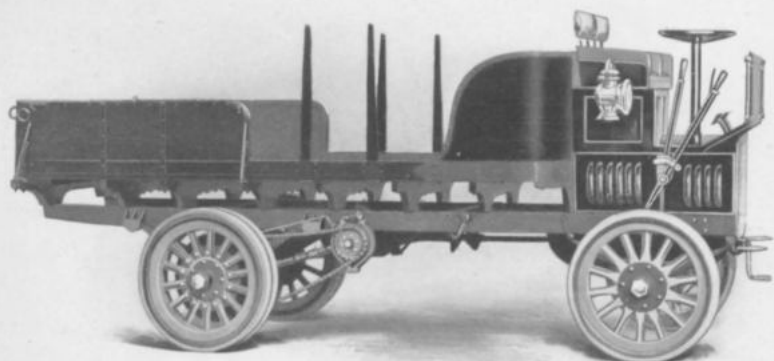
Transmission Planetary.

Gear Changes Two forward, one reverse.

Descriptive catalogue will be sent upon application to the above-named company

KNOX AUTO-
MOBILE CO.
Springfield, Mass.

PRICE . . . \$4200



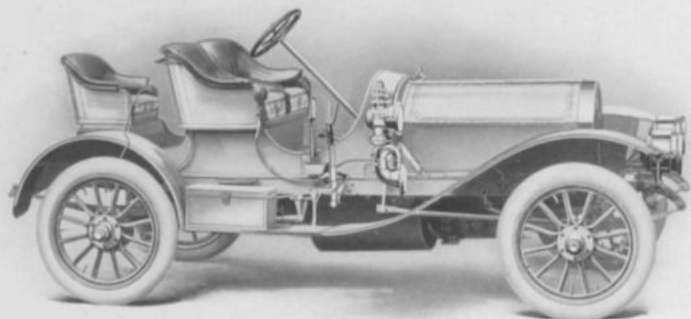
MODEL : 232, TRUCK.

Color	Optional.	Cylinders	Four.
Carrying Capacity	6000 pounds.	Arranged	Vertically, under hood.
Clutch	Cone, metal-to-metal ; in oil bath.	How Cast	Separately.
Wheel Base	111 inches.	Bore	4 $\frac{1}{8}$ inches.
Gauge	60 inches front, 62 inches rear.	Stroke	4 $\frac{1}{4}$ inches.
Tire Dimensions,		Cooling	Air.
Front	36 x 4 inches.	Ignition	Jump spark.
Rear	36 x 4 inches dual.	Electric Source	Dry batteries.
Brakes	Three.	Drive	Bevel gear to jack shaft, double side chains to rear wheels.
Horse-power	(A.L.A.M. rating), 30.	Transmission	Selective sliding gear.
		Gear Changes	Three forward, one re- verse.

Descriptive catalogue will be sent upon application to the above-named company

**KNOX AUTO-
MOBILE CO.**
Springfield, Mass.

PRICE . . . \$2500
Air Cooled
Water Cooled \$2600



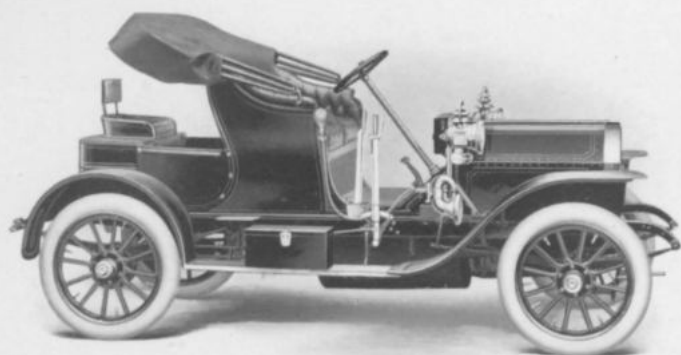
MODEL : H, SPORTABOUT.

Color	Napier green, Mercedes red, Brewster green, French grey.	Cylinders	Four.
Seating Capacity	Three persons.	Arranged	Vertically, under hood.
Clutch	Cone, metal-to-metal ; in oil bath.	How Cast	Separately.
Wheel Base	102 inches.	Bore	4½ inches.
Gauge	56 inches.	Stroke	4¼ inches.
Tire Dimensions,		Cooling	Air or water.
Front	32 x 3½ inches.	Ignition	Jump spark.
Rear	32 x 3½ inches.	Electric Source	Dry batteries.
Brakes	Three. TYPE: Expanding and contracting on rear wheels.	Drive	Shaft.
Horse-power	(A. I. A. M. rating), 30.	Transmission	Selective sliding gear.
		Gear Changes	Three forward, one reverse.

Descriptive catalogue will be sent upon application to the above-named company

KNOX AUTO-
MOBILE CO.
Springfield, Mass.

PRICE . . . \$2500
Air Cooled
Water Cooled \$2600



MODEL : H, STANHOPE.

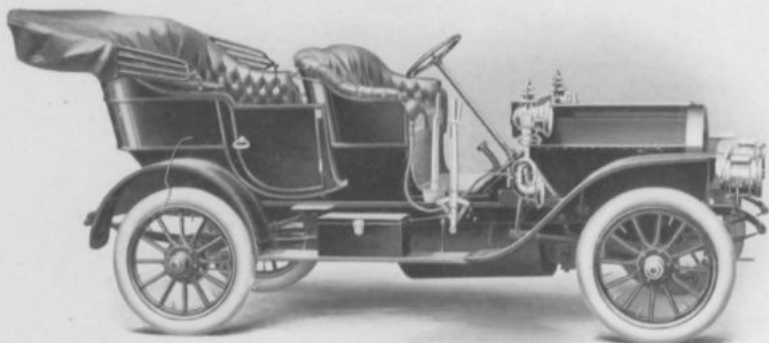
Color	Napier green, Mercedes red, Brewster green, French grey.	Cylinders	Four.
Seating Capacity	Three persons.	Arranged	Vertically, under hood.
Clutch	Cone, metal-to-metal; in oil bath.	How Cast	Separately.
Wheel Base	102 inches.	Bore	4 $\frac{3}{4}$ inches.
Gauge	56 inches.	Stroke	4 $\frac{1}{4}$ inches.
Tire Dimensions,		Cooling	Air or water.
Front	32 x 4 inches.	Ignition	Jump spark.
Rear	32 x 4 inches.	Electric Source	Dry batteries.
Brakes	Three. Type: Expanding and contracting on rear wheels.	Drive	Shaft.
Horse-power	(A.L.A.M. rating), 30.	Transmission	Selective sliding gear.
		Gear Changes	Three forward, one reverse.

Descriptive catalogue will be sent upon application to the above-named company

**KNOX AUTO-
MOBILE CO.**
Springfield, Mass.

32

PRICE . . . \$2600
Air Cooled
Water Cooled \$2700
With Cape Top \$150
Extra



MODEL : H, KNOX WATERLESS.

Color	Napier green, Mercedes red, Brewster green, French grey.	Cylinders	Four.
Seating Capacity .	Five persons.	Arranged	Vertically, under hood.
Clutch	Cone.	How Cast	Separately.
Wheel Base	102 inches.	Bore	4¾ inches.
Gauge	56 inches.	Stroke	4¼ inches.
Tire Dimensions,		Cooling	Air or water.
Front	32 x 4 inches.	Ignition	Jump spark.
Rear	32 x 4 inches.	Electric Source .	Dry batteries.
Brakes	Three. TYPE: Expanding and contracting on rear wheels.	Drive	Shaft.
Horse-power	(A.L.A.M. rating), 30.	Transmission . .	Selective sliding gear.
		Gear Changes . .	Three forward, one reverse.

Descriptive catalogue will be sent upon application to the above-named company

KNOX AUTO-
MOBILE CO.
Springfield, Mass.

PRICE . . . \$3500
Air Cooled
Water Cooled \$3600



MODEL : H, LANDAULET.

Color	Optional.	Cylinders	Four.
Seating Capacity .	Five persons.	Arranged	Vertically, under hood.
Clutch	Cone, metal-to-metal ; in oil bath.	How Cast	Separately.
Wheel Base	102 inches.	Bore	4½ inches.
Gauge	56 inches.	Stroke	4¼ inches.
Tire Dimensions.		Cooling	Air or water.
Front	32 x 4 inches.	Ignition	Jump spark.
Rear	32 x 4 inches.	Electric Source .	Dry batteries.
Brakes	Three. TYPE: Expanding and contracting on rear wheels.	Drive	Shaft.
Horse-power	(A. I. A. M. rating), 30.	Transmission . . .	Selective sliding gear.
		Gear Changes . . .	Three forward, one reverse.

Descriptive catalogue will be sent upon application to the above-named company

**KNOX AUTO-
MOBILE CO.**
Springfield, Mass.

PRICE . . . \$3500
Air Cooled
Water Cooled \$3600



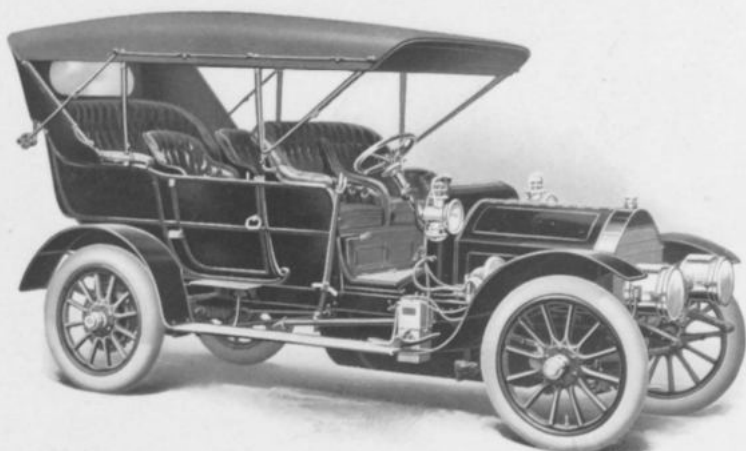
MODEL : H, LIMOUSINE.

Color	Optional.	Cylinders	Four.
Seating Capacity	Five persons.	Arranged	Vertically, under hood.
Clutch	Cone, metal-to-metal ; in oil bath.	How Cast	Separately.
Wheel Base	102 inches.	Bore	4 $\frac{3}{4}$ inches.
Gauge	56 inches.	Stroke	4 $\frac{3}{4}$ inches.
Tire Dimensions,		Cooling	Air or water.
Front	32 x 4 inches.	Ignition	Jump spark.
Rear	32 x 4 inches.	Electric Source	Dry batteries.
Brakes	Three. TYPE: Expanding and contracting on drums on rear wheels.	Drive	Shaft.
Horse-power	(A.L.A.M. rating), 30.	Transmission	Selective sliding gear.
		Gear Changes	Three forward, one reverse.

Descriptive catalogue will be sent upon application to the above-named company

THE GEORGE
N. PIERCE CO.
Buffalo, N. Y.

PRICE . . \$5000
With Cape Top \$5200



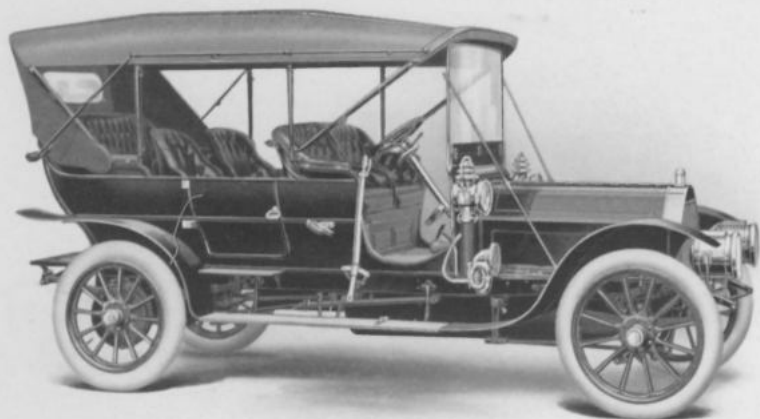
MODEL : PIERCE GREAT ARROW.

Color	Optional.	Cylinders	Four.
Seating Capacity	Seven persons.	Arranged	Vertically, under hood.
Clutch	Cone, leather faced, with cork inserts.	How Cast	Separately.
Wheel Base	124 inches.	Bore	5 inches.
Gauge	56 inches.	Stroke	5½ inches.
Tire Dimensions,		Cooling	Water.
Front	36 x 4 inches.	Radiator	Cellular.
Rear	36 x 5 inches.	Ignition	Jump spark.
Brakes	Four. TYPE: Internal expanding and external contracting on rear wheels.	Electric Source	Storage battery and high tension magneto.
Horse-power	(A.L.A.M. rating), 40.	Drive	Shaft.
		Transmission	Sliding gear.
		Gear Changes	Three forward, one reverse.

Descriptive catalogue will be sent upon application to the above-named company

THE GEORGE
N. PIERCE CO.
Buffalo, N. Y.

PRICE . . . \$5500
With Cape Top \$5700



MODEL: PIERCE GREAT ARROW.

Color	Optional.	Cylinders	Six.
Seating Capacity	Seven persons.	Arranged	Vertically, under hood.
Clutch	Cone, leather faced, with cork inserts.	How Cast	Separately.
Wheel Base	130 inches.	Bore	4 1/4 inches.
Gauge	56 inches.	Stroke	4 1/4 inches.
Tire Dimensions,		Cooling	Water.
Front	36 x 4 inches.	Radiator	Cellular.
Rear	36 x 5 inches.	Ignition	Jump spark.
Brakes	Four. TYPE: Internal expanding and external contracting on drums on both rear wheels.	Electric Source	Storage battery and high tension magneto.
Horse-power	(A.L.A.M. rating), 40.	Drive	Shaft.
		Transmission	Sliding gear.
		Gear Changes	Three forward, one reverse.

Descriptive catalogue will be sent upon application to the above-named company.

THE GEORGE
N. PIERCE CO.
Buffalo, N. Y.

PRICE . . \$6250



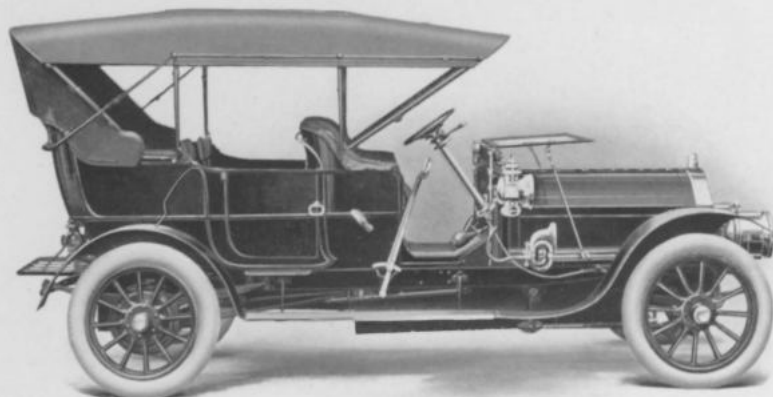
MODEL: GREAT ARROW SUBURBAN.

Color	Optional.	Cylinders	Four.
Seating Capacity	Seven persons.	Arranged	Vertically, under hood.
Clutch	Cone, leather faced, with cork inserts.	How Cast	Separately.
Wheel Base	124 inches.	Bore	5 inches.
Gauge	56 inches.	Stroke	5½ inches.
Tire Dimensions.		Cooling	Water.
Front	36 x 4 inches.	Radiator	Cellular.
Rear	36 x 5 inches.	Ignition	Jump spark.
Brakes	Four. TYPE: Internal expanding and external contracting on drums on both rear wheels.	Electric Source	Storage battery and high tension magneto.
Horse-power	(A.L.A.M. rating), 40.	Drive	Shaft.
		Transmission	Sliding gear.
		Gear Changes	Three forward, one reverse.

Descriptive catalogue will be sent upon application to the above-named company

THE GEORGE
N. PIERCE CO.
Buffalo, N. Y.

PRICE . . . \$6500
With Cape Top \$6700



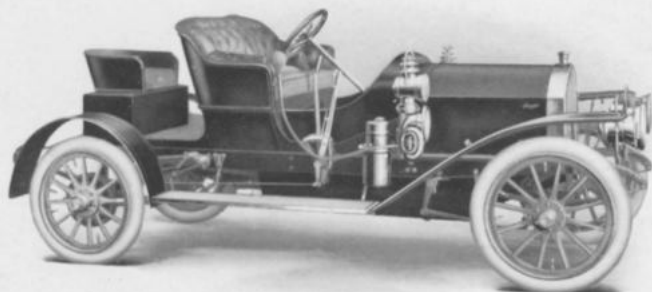
MODEL : PIERCE GREAT ARROW.

Color	Optional.	Cylinders	Six.
Seating Capacity	Seven persons.	Arranged	Vertically, under hood.
Clutch	Cone, leather faced, with cork inserts.	How Cast	Separately.
Wheel Base	135 inches.	Bore	5 inches.
Gauge	56 inches.	Stroke	5½ inches.
Tire Dimensions.		Cooling	Water.
Front	36 x 4½ inches.	Radiator	Cellular.
Rear	36 x 5 inches.	Ignition	Jump spark.
Brakes	Four. TYPE: Internal expanding and external contracting on drums on both rear wheels.	Electric Source	Storage battery and high tension magneto.
Horse-power	(A. I. A. M. rating), 60.	Drive	Shaft.
		Transmission	Sliding gear.
		Gear Changes	Three forward, one reverse.

Descriptive catalogue will be sent upon application to the above-named company.

ELECTRIC VE-
HICLE CO.
Hartford, Conn.

PRICE . . \$3000



MODEL : COLUMBIA, MARK 48-2 RUNABOUT

Color Body, red; gear, ver-
million.

Seating Capacity . Three persons.

Clutch Cone, leather faced.

Wheel Base . . . 100 inches.

Gauge 56 inches.

Tire Dimensions.

Front 34 x 3½ inches.

Rear 34 x 4 inches.

Brakes Two. TYPE: Contract-
ing and expanding on
rear wheels.

Horse-power . . (A.L.A.M. rating), 28.

Cylinders Four.

Arranged Vertically, under hood.

How Cast In pairs.

Bore 4¼ inches.

Stroke 4½ inches.

Cooling Water.

Radiator Cellular.

Ignition Make-and-break.

Electric Source . Low tension magneto.

Drive Shaft.

Transmission . . Selective sliding gear.

Gear Changes . . Three forward, one re-
verse.

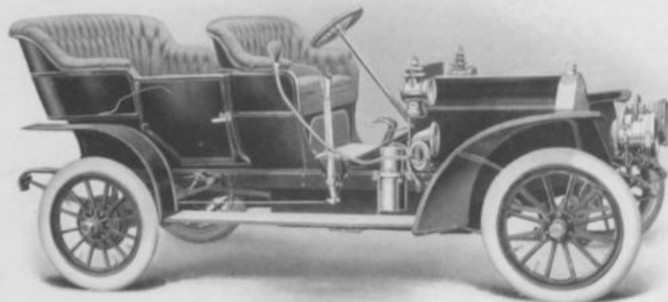
Descriptive catalogue will be sent upon application to the above-named company

ELECTRIC VE-
HICLE CO.,
Hartford, Conn.



PRICE . . . \$3000

With Cape Top \$3150



MODEL: COLUMBIA, MARK 48-2

Color	Body, red; gear, vermilion.	Cylinders	Four.
Seating Capacity	Five persons.	Arranged	Vertically, under hood.
Clutch	Cone, leather faced.	How Cast	In pairs.
Wheel Base	109 inches.	Bore	4¼ inches.
Gauge	56 inches.	Stroke	4½ inches.
Tire Dimensions		Cooling	Water.
Front	34 x 3½ inches.	Radiator	Cellular.
Rear	34 x 4 inches.	Ignition	Make-and-break.
Brakes	Two. TYPE: Contracting and expanding on rear wheels.	Electric Source	Low tension magneto.
Horse-power	(A. L. A. M. rating), 28.	Drive	Shaft.
		Transmission	Selective sliding gear.
		Gear Changes	Three forward, one reverse.

Descriptive catalogue will be sent upon application to the above-named company

ELECTRIC VE-
HICLE CO.
Hartford, Conn.

PRICE . . \$4200



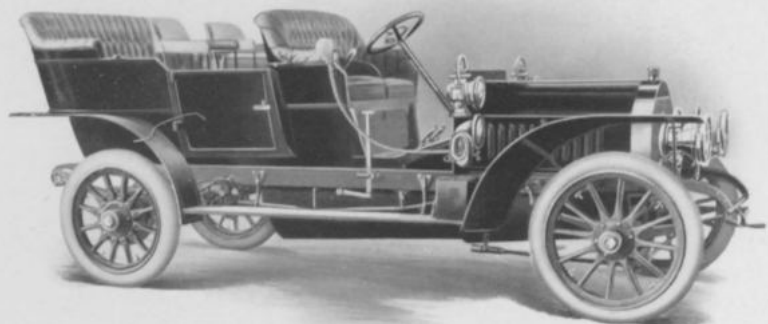
MODEL: COLUMBIA, MARK 48-2 LIMOUSINE

Color	Optional.	Cylinders	Four.
Seating Capacity	Five persons.	Arranged	Vertically, under hood.
Clutch	Cone, leather faced.	How Cast	In pairs.
Wheel Base	115 inches.	Bore	4¼ inches.
Gauge	56 inches.	Stroke	4½ inches.
Tire Dimensions,		Cooling	Water.
Front	34 x 4 inches.	Radiator	Cellular.
Rear	34 x 4½ inches.	Ignition	Make-and-break.
Brakes	Two. TYPE: Contracting and expanding on rear wheels.	Electric Source	Low tension magneto.
Horse-power	(A.L.A.M. rating), 28.	Drive	Shaft.
		Transmission	Selective sliding gear.
		Gear Changes	Three forward, one reverse.

Descriptive catalogue will be sent upon application to the above-named company

ELECTRIC VE-
HICLE CO.
Hartford, Conn.

PRICE . . . \$6500
With Cape Top \$6750



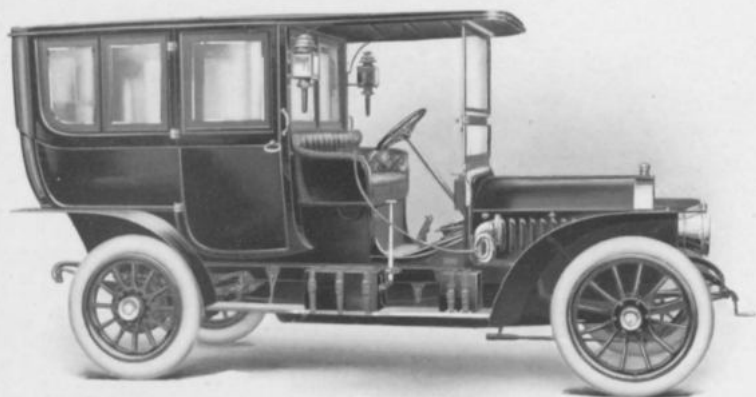
MODEL: COLUMBIA, MARK 66-3

Color	Optional.	Cylinders	Four.
Seating Capacity	Seven persons.	Arranged	Vertically, under hood.
Clutch	Electric.	How Cast	In pairs.
Wheel Base	124 inches.	Bore	5½ inches.
Gauge	56 inches.	Stroke	5½ inches.
Tire Dimensions.		Cooling	Water.
Front	36 x 4 inches.	Radiator	Cellular.
Rear	36 x 5 inches.	Ignition	Jump spark.
Brakes	Three. TYPE: One electric, one contracting bands, one expanding shoes; mechanical brakes on rear wheels.	Electric Source	High tension magneto and batteries.
Horse-power	(A.L.A.M. rating), 48.	Drive	Shaft to live rear axle.
		Transmission	Electric.
		Gear Changes	Five forward, two reverse.

Descriptive catalogue will be sent upon application to the above-named company.

ELECTRIC VE-
HICLE CO.
Hartford, Conn.

PRICE . . \$8500



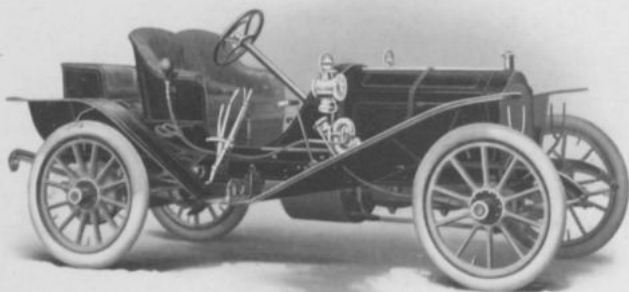
MODEL: COLUMBIA, MARK 66-3 LIMOUSINE

Color	Optional.	Cylinders	Four.
Seating Capacity	Five persons.	Arranged	Vertically, under forward bonnet.
Clutch	Electric.	How Cast	In pairs.
Wheel Base	124 inches.	Bore	5½ inches.
Gauge	56 inches.	Stroke	5½ inches.
Tire Dimensions,		Cooling	Water.
Front	36 x 4 inches.	Radiator	Cellular.
Rear	36 x 5 inches.	Ignition	Jump spark.
Brakes	Three. TYPE: One electric, one contracting bands, one expanding shoes; mechanical brakes on rear wheels.	Electric Source	High tension magneto and batteries.
Horse-power	(A.L.A.M. rating), 48.	Drive	Shaft.
		Transmission	Electric.
		Gear Changes	Five forward, two reverse.

Descriptive catalogue will be sent upon application to the above-named company

PACKARD
MOTOR CAR
COMPANY
Detroit, Mich.

PRICE . . . \$4200



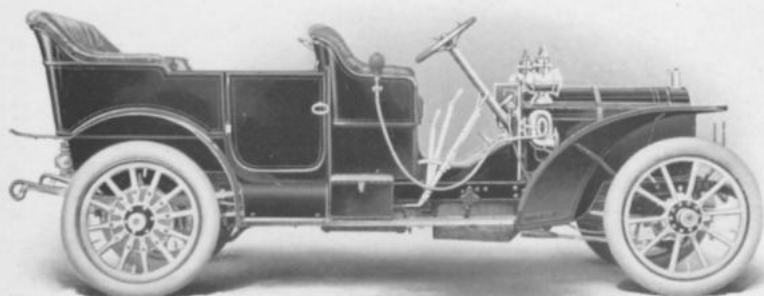
MODEL : PACKARD 30 RUNABOUT.

Color	Body and frame, Packard blue; running gear, cream yellow.	Cylinders	Four.
Seating Capacity .	Two persons.	Arranged	Vertically.
Clutch	Packard expanding band.	How Cast	In pairs.
Wheel Base	108 inches.	Bore	5 inches.
Gauge	56½ inches.	Stroke	5½ inches.
Tire Dimensions,		Cooling	Water.
Front	36 x 3½ inches.	Radiator	Cellular.
Rear	36 x 4 inches.	Ignition	Jump spark.
Brakes	Four. Type: Expanding and contracting on rear wheels.	Electric Source .	Low tension magneto and storage battery.
Horse-power	(French rating), 30.	Drive	Shaft.
		Transmission . .	Sliding gear.
		Gear Changes . .	Three forward, one reverse.

Descriptive catalogue will be sent upon application to the above-named company

PACKARD
MOTOR CAR
COMPANY
Detroit, Mich.

PRICE . . . \$4200



MODEL : PACKARD 30.

Color	Body and frame, Packard blue; running gear, cream yellow.	Cylinders	Four.
Seating Capacity	Seven persons.	Arranged	Vertically.
Clutch	Packard expanding band.	How Cast	In pairs.
Wheel Base	123½ inches.	Bore	5 inches.
Gauge	56½ inches.	Stroke	5½ inches.
Tire Dimensions.		Cooling	Water.
Front	36 x 4 inches.	Radiator	Tubular ribbed.
Rear	36 x 4½ inches.	Ignition	Jump spark.
Brakes	Four. TYPE: Expanding and contracting on rear wheels.	Electric Source	Low tension magneto and storage battery.
Horse-power	(French rating), 30.	Drive	Shaft.
		Transmission	Sliding gear.
		Gear Changes	Three forward, one reverse.

Descriptive catalogue will be sent upon application to the above-named company

PACKARD
MOTOR CAR
COMPANY
Detroit, Mich.

PRICE . . . \$4200

Glass Back Canopy
Top, \$470



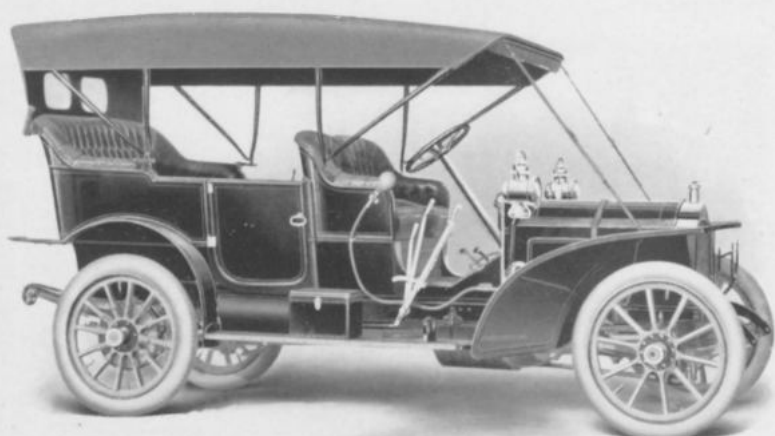
MODEL : PACKARD 30.

Color	Body and frame, Packard blue; running gear, cream yellow.	Cylinders	Four.
Seating Capacity	Seven persons.	Arranged	Vertically.
Clutch	Packard expanding band.	How Cast	In pairs.
Wheel Base	123½ inches.	Bore	5 inches.
Gauge	56½ inches.	Stroke	5½ inches.
Tire Dimensions.		Cooling	Water.
Front	36 x 4 inches.	Radiator	Tubular ribbed.
Rear	36 x 4½ inches.	Ignition	Jump spark.
Brakes	Four. TYPE: Expanding and contracting on rear wheels.	Electric Source	Low tension magneto and storage battery.
Horse-power	(French rating), 30.	Drive	Shaft.
		Transmission	Sliding gear.
		Gear Changes	Three forward, one reverse.

Descriptive catalogue will be sent upon application to the above-named company

PACKARD
MOTOR CAR
COMPANY
Detroit, Mich.

PRICE . . \$4200
Cape Cart Top \$150



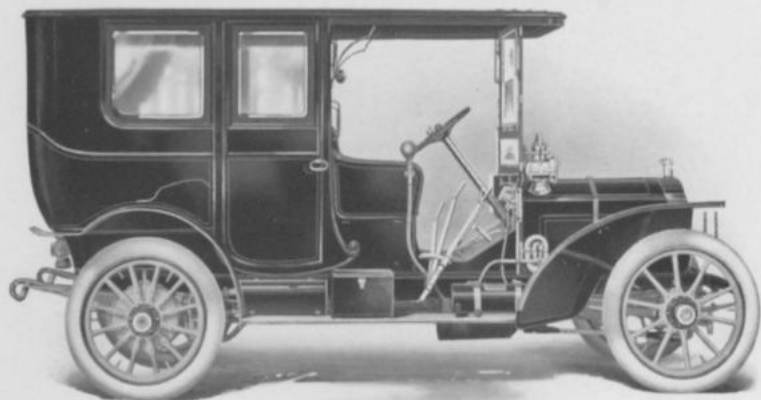
MODEL : PACKARD 30.

Color	Body and frame, Packard blue; running gear, cream yellow.	Cylinders	Four.
Seating Capacity	Seven persons.	Arranged	Vertically.
Clutch	Packard expanding band.	How Cast	In pairs.
Wheel Base	123½ inches.	Bore	5 inches.
Gauge	56½ inches.	Stroke	5½ inches.
Tire Dimensions.		Cooling	Water.
Front	36 x 4 inches.	Radiator	Tubular ribbed.
Rear	36 x 4½ inches.	Ignition	Jump spark.
Brakes	Four. TYPE: Expanding and contracting on rear wheels.	Electric Source	Low tension magneto and storage battery.
Horse-power	(French rating), 33.	Drive	Shaft.
		Transmission	Sliding gear.
		Gear Changes	Three forward, one reverse.

Descriptive catalogue will be sent upon application to the above-named company

PACKARD
MOTOR CAR
COMPANY
Detroit, Mich.

PRICE . . \$3800
(Chassis Only)
Body Attached, \$1800



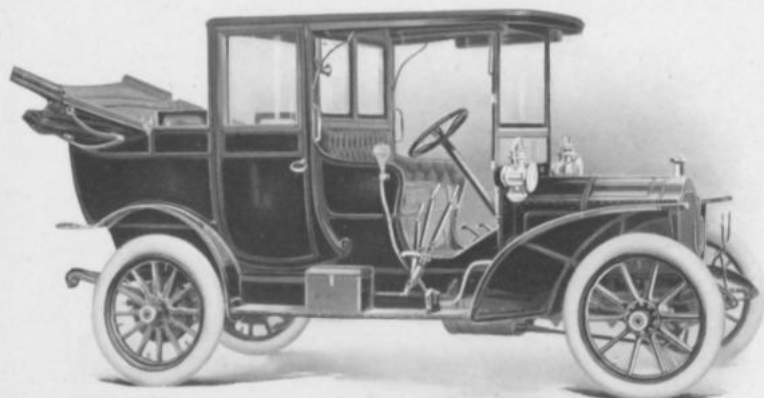
MODEL : PACKARD 30 LIMOUSINE.

Color	Body and frame, Packard blue; running gear, cream yellow.	Cylinders	Four.
Seating Capacity	Seven persons.	Arranged	Vertically.
Clutch	Packard expanding band.	How Cast	In pairs.
Wheel Base	123½ inches.	Bore	5 inches.
Gauge	56½ inches.	Stroke	5½ inches.
Tire Dimensions,		Cooling	Water.
Front	36 x 4 inches.	Radiator	Tubular ribbed.
Rear	36 x 4½ inches.	Ignition	Jump spark.
Brakes	Four. TYPE: Expanding and contracting on rear wheels.	Electric Source	Low tension magneto and storage battery.
Horse-power	(French rating), 30.	Drive	Shaft.
		Transmission	Sliding gear.
		Gear Changes	Three forward, one reverse.

Descriptive catalogue will be sent upon application to the above-named company.

PACKARD
MOTOR CAR
COMPANY
Detroit, Mich.

PRICE . . \$3800
(Chassis Only)
Body Attached, \$1900



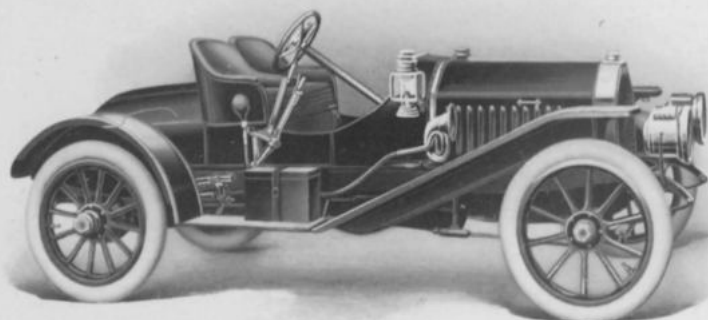
MODEL : PACKARD 30 LANDAULET.

Color	Body and frame, Packard blue; running gear, cream yellow.	Cylinders	Four.
Seating Capacity	Seven persons.	Arranged	Vertically.
Clutch	Packard expanding band.	How Cast	In pairs.
Wheel Base	123½ inches.	Bore	5 inches.
Gauge	56½ inches.	Stroke	5½ inches.
Tire Dimensions,		Cooling	Water.
Front	36 x 4 inches.	Radiator	Tubular ribbed.
Rear	36 x 4½ inches.	Ignition	Jump spark.
Brakes	Four. Type: Expanding and contracting on rear wheels.	Electric Source	Low tension magneto and storage battery.
Horse-power	(French rating), 30.	Drive	Shaft.
		Transmission	Sliding gear.
		Gear Changes	Three forward, one reverse.

Descriptive catalogue will be sent upon application to the above-named company

PEERLESS
MOTOR CAR
COMPANY
Cleveland, Ohio

PRICE . . . \$4300



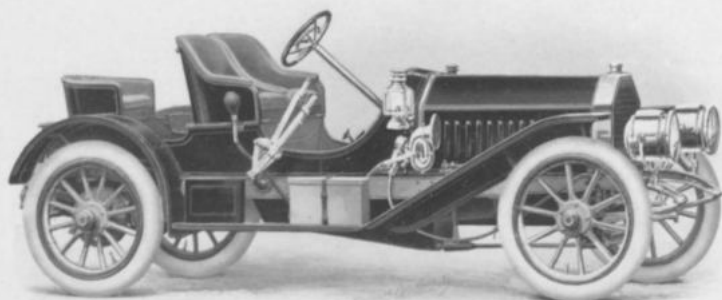
MODEL : 18, ROADSTER.

Color	French grey with red stripe.	Cylinders	Four.
Seating Capacity	Three persons.	Arranged	Vertically, under hood.
Clutch	Expanding band.	How Cast	In pairs.
Wheel Base	100 inches.	Bore	4 $\frac{1}{2}$ inches.
Gauge	56 inches.	Stroke	5 $\frac{1}{2}$ inches.
Tire Dimensions.		Cooling	Water.
Front	36 x 4 inches.	Radiator	Tubular.
Rear	36 x 4 $\frac{1}{2}$ inches.	Ignition	Jump spark.
Brakes	Four. TYPE: Contracting and expanding on rear wheels.	Electric Source	Magneto and battery.
Horse-power	(A. I. A. M. rating), 30.	Drive	Shaft.
		Transmission	Selective sliding gear.
		Gear Changes	Four forward, one reverse.

Descriptive catalogue will be sent upon application to the above-named company.

PEERLESS
MOTOR CAR
COMPANY
Cleveland, Ohio

PRICE . . \$4300



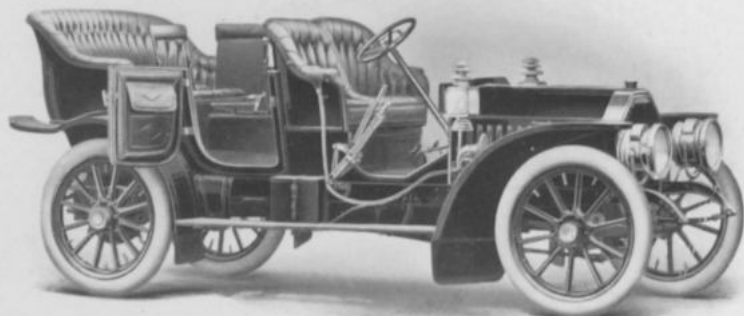
MODEL : 18, ROADSTER.

Color	French grey with red stripe.	Cylinders	Four.
Seating Capacity .	Three persons.	Arranged	Vertically, under hood.
Clutch	Expanding band.	How Cast	In pairs.
Wheel Base	109 inches.	Bore	4 $\frac{1}{2}$ inches.
Gauge	56 inches.	Stroke	5 $\frac{1}{2}$ inches.
Tire Dimensions.		Cooling	Water.
Front	36 x 4 inches.	Radiator	Tubular.
Rear	36 x 4 $\frac{1}{2}$ inches.	Ignition	Jump spark.
Brakes	Four. TYPE: Contracting and expanding on rear wheels.	Electric Source . . .	Magneto and battery.
Horse-power	(A.L.A.M. rating), 30.	Drive	Shaft.
		Transmission	Selective sliding gear.
		Gear Changes	Four forward, one reverse.

Descriptive catalogue will be sent upon application to the above-named company

PEERLESS
MOTOR CAR
COMPANY
Cleveland, Ohio

PRICE . . . \$4300
With Cape Top \$4475



MODEL: 18, TOURING.

Color	Maroon and red,	Cylinders	Four.
Seating Capacity	Seven persons.	Arranged	Vertically, under hood.
Clutch	Expanding band.	How Cast	In pairs.
Wheel Base	118 inches.	Bore	4 $\frac{1}{4}$ inches.
Gauge	5 $\frac{1}{2}$ inches.	Stroke	5 $\frac{3}{8}$ inches.
Tire Dimensions,		Cooling	Water.
Front	36 x 4 inches.	Radiator	Tubular.
Rear	36 x 4 $\frac{1}{2}$ inches.	Ignition	Jump spark.
Brakes	Four. TYPE: Contracting and expanding on rear wheels.	Electric Source	Magneto and battery.
Horse-power	(A. I. A. M. rating), 30.	Drive	Shaft.
		Transmission	Selective sliding gear.
		Gear Changes	Four forward, one reverse.

Descriptive catalogue will be sent upon application to the above-named company

PEERLESS
MOTOR CAR
COMPANY
Cleveland, Ohio

PRICE . . . \$5500



MODEL: 18, LIMOUSINE.

Color	Blue or maroon.	Cylinders	Four.
Seating Capacity	Seven persons.	Arranged	Vertically, under hood.
Clutch	Expanding band.	How Cast	In pairs.
Wheel Base	118 inches.	Bore	4 $\frac{3}{4}$ inches.
Gauge	56 inches.	Stroke	5 $\frac{1}{2}$ inches.
Tire Dimensions,		Cooling	Water.
Front	36 x 4 inches.	Radiator	Tubular.
Rear	36 x 4 $\frac{1}{2}$ inches.	Ignition	Jump spark.
Brakes	Four. TYPE: Contracting and expanding on rear wheels.	Electric Source	Magneto and storage battery.
Horse-power	(A.L.A.M. rating), 30.	Drive	Shaft.
		Transmission	Selective sliding gear.
		Gear Changes	Four forward, one reverse.

Descriptive catalogue will be sent upon application to the above-named company

PEERLESS
MOTOR CAR
COMPANY
Cleveland, Ohio

PRICE . . . \$5800



MODEL : 18, LANDAULET.

Color Blue or maroon.

Seating Capacity . Seven persons.

Clutch Expanding band.

Wheel Base . . . 118 inches.

Gauge 56 inches.

Tire Dimensions,

Front 36 x 4 inches.

Rear 36 x 4½ inches.

Brakes Four. TYPE: Contracting and expanding on rear wheels.

Horse-power . . (A. I. A. M. rating), 30.

Cylinders Four.

Arranged Vertically, under hood.

How Cast In pairs.

Bore 4¾ inches.

Stroke 5½ inches.

Cooling Water.

Radiator Tubular.

Ignition Jump spark.

Electric Source . Magneto and battery.

Drive Shaft.

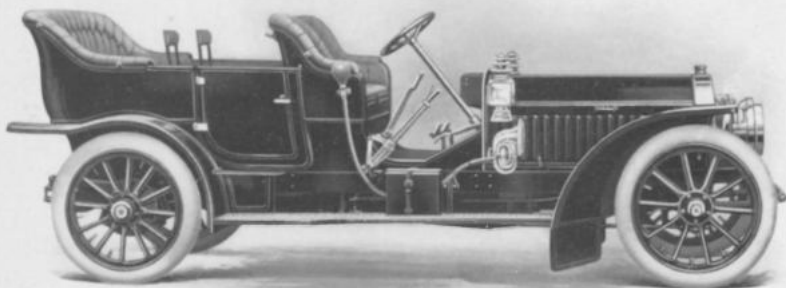
Transmission . . Selective sliding gear.

Gear Changes . . Four forward, one reverse.

Descriptive catalogue will be sent upon application to the above named company

PEERLESS
MOTOR CAR
COMPANY
Cleveland, Ohio

PRICE . . . \$6000
With Cape Top \$6175



MODEL : 20.

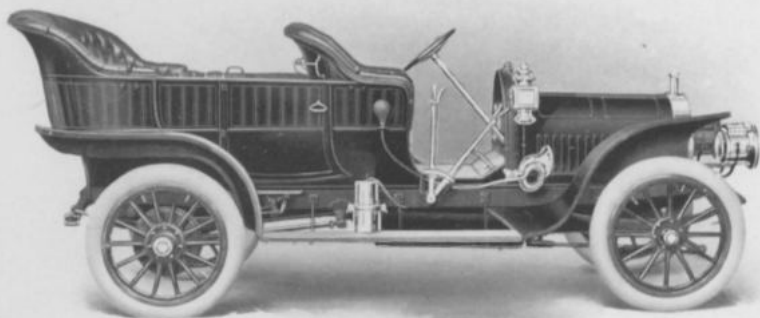
Color	Maroon and red (standard).	Cylinders	Six.
Seating Capacity	Seven persons.	Arranged	Vertically, under hood.
Clutch	Expanding band.	How Cast	In pairs.
Wheel Base	132 inches.	Bore	4 $\frac{1}{4}$ inches.
Gauge	56 inches.	Stroke	5 $\frac{1}{2}$ inches.
Tire Dimensions.		Cooling	Water.
Front	36 x 4 inches.	Radiator	Tubular.
Rear	36 x 5 inches.	Ignition	Jump spark.
Brakes	Four. TYPE : Contracting and expanding on rear wheels.	Electric Source	Magneto and battery.
Horse-power	(A.L.A.M. rating), 50.	Drive	Shaft.
		Transmission	Selective sliding gear.
		Gear Changes	Four forward, one reverse.

Descriptive catalogue will be sent upon application to the above-named company

ROYAL
MOTOR CAR
COMPANY
Cleveland, Ohio

PRICE . . . \$4000

With Cape Top \$4150



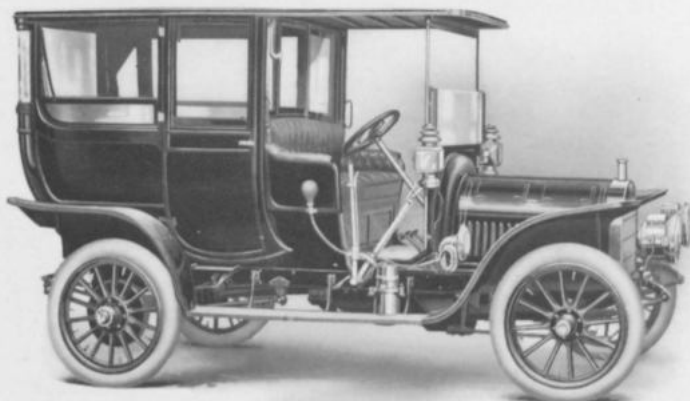
MODEL : ROYAL TOURIST G-3.

Color	Standard.	Cylinders	Four.
Seating Capacity	Seven persons.	Arranged	Vertically, under hood.
Clutch	Cone, leather faced.	How Cast	In pairs.
Wheel Base	114 inches.	Bore	5½ inches.
Gauge	56 inches.	Stroke	5½ inches.
Tire Dimensions,		Cooling	Water.
Front	36 x 4½ inches.	Radiator	Cellular.
Rear	36 x 4½ inches.	Ignition	Jump spark.
Brakes	Three. TYPE : Expanding on rear wheels; contracting on driving shaft.	Electric Source	Storage battery and magneto.
Horse-power	(A. I. A. M. rating), 45.	Drive	Bevel gear.
		Transmission	Sliding gear.
		Gear Changes	Three forward, one reverse.

Descriptive catalogue will be sent upon application to the above-named company

ROYAL
MOTOR CAR
COMPANY
Cleveland, Ohio

PRICE . . \$5000



MODEL : ROYAL TOURIST LIMOUSINE G-3.

Color	Standard.	Cylinders	Four.
Seating Capacity	Seven persons.	Arranged	Vertically, under hood.
Clutch	Cone, leather faced.	How Cast	In pairs.
Wheel Base	114 inches.	Bore	5½ inches.
Gauge	36 inches.	Stroke	5½ inches.
Tire Dimensions,		Cooling	Water.
Front	36 x 4½ inches.	Radiator	Cellular.
Rear	36 x 4½ inches.	Ignition	Jump spark.
Brakes	Three. Type : Expanding on rear wheels; contracting on driving shaft.	Electric Source	Storage battery and magneto.
Horse-power	(A.L.A.M. rating), 45.	Drive	Bevel gear.
		Transmission	Sliding gear.
		Gear Changes	Three forward, one reverse.

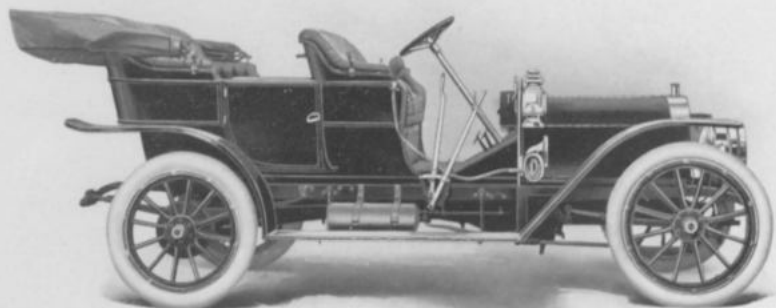
Descriptive catalogue will be sent upon application to the above-named company.

THE CORBIN
MOTOR
VEHICLE
CORPORATION

New Britain, Conn.

PRICE . . . \$2500

With Cape Top \$2650



MODEL: K.

Color Black with red stripe.

Seating Capacity . . . Five persons.

Clutch Cone, leather faced.

Wheel Base 108 inches.

Gauge 56 inches.

Tire Dimensions,

Front 34 x 3½ inches.

Rear 34 x 4 inches.

Brakes Four. TYPE: Internal expanding on rear wheels.

Horse-power . . . (A.L.A.M. rating), 32.4.

Cylinders Four.

Arranged Vertically, under hood.

How Cast Separately.

Bore 4½ inches.

Stroke 4¼ inches.

Cooling Water.

Radiator Cellular.

Ignition Jump spark; two sets of plugs.

Electric Source . . . Storage battery; high tension magneto extra.

Drive Shaft.

Transmission . . . Selective sliding gear.

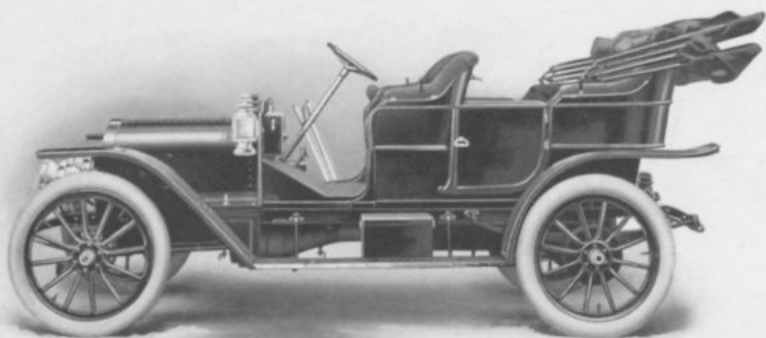
Gear Changes . . . Three forward, one reverse.

Descriptive catalogue will be sent upon application to the above-named company

THE CORBIN
MOTOR
VEHICLE
CORPORATION
New Britain, Conn.

PRICE . . . \$2650

With Cape Top \$2800



MODEL: R.

Color	Black, red stripe.	Cylinders	Four.
Seating Capacity	Five persons.	Arranged	Vertically, under hood.
Clutch	Cone, leather faced,	How Cast	Separately.
Wheel Base	108 inches.	Bore	4½ inches.
Gauge	56 inches.	Stroke	4¼ inches.
Tire Dimensions,		Cooling	Air.
Front	34 x 3½ inches.	Ignition	Jump spark; two sets of plugs.
Rear	34 x 4 inches.	Electric Source	Storage battery; high tension magneto extra.
Brakes	Four. TYPE: Internal expanding on rear wheels.	Drive	Shaft.
Horse-power	(A.L.A.M. rating), 32.4.	Transmission	Selective sliding gear.
		Gear Changes	Three forward, one re- verse.

Descriptive catalogue will be sent upon application to the above-named company

THE CORBIN
MOTOR
VEHICLE
CORPORATION

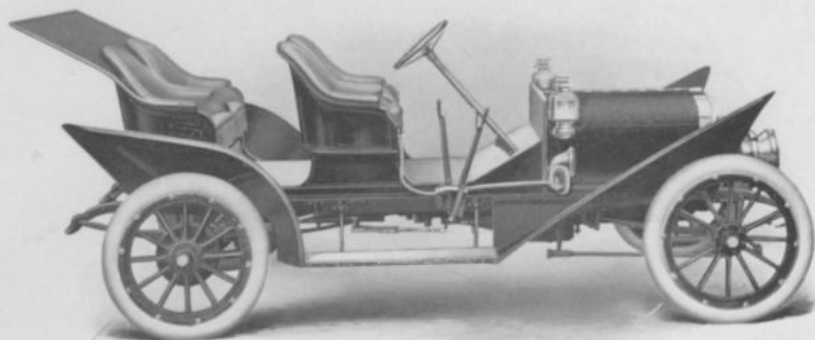
New Britain, Conn.

PRICE, S . \$2650

With Cape Top \$2800

PRICE, O . \$2500

With Cape Top \$2650



MODEL : S or O.

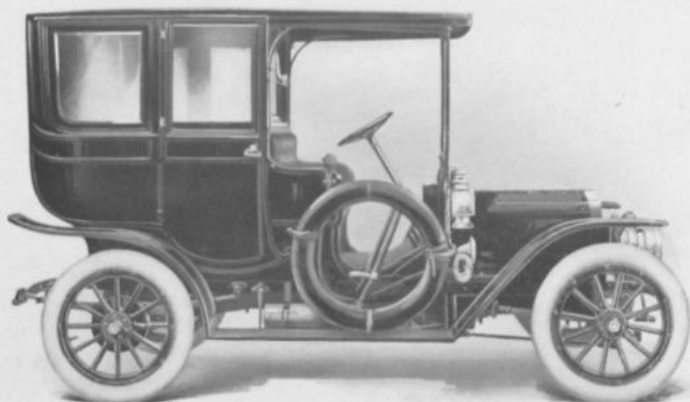
Color	Richelieu blue with white stripe.	Cylinders	Four.
Seating Capacity .	Two, three or four persons.	Arranged	Vertically, under hood.
Clutch	Cone, leather faced.	How Cast	Separately.
Wheel Base	108 inches.	Bore	4½ inches.
Gauge	56 inches.	Stroke	4¾ inches.
Tire Dimensions,		Cooling	S, air; O, water.
Front	34 x 3½ inches.	Ignition	Jump spark; two sets of plugs.
Rear	34 x 4 inches.	Electric Source .	Storage battery; high tension magneto extra.
Brakes	Four. TYPE: Internal expanding on rear wheels.	Drive	Shaft.
Horse-power . . .	(A.L.A.M. rating), 32.4.	Transmission . .	Selective sliding gear.
		Gear Changes . .	Three forward, one reverse.

Descriptive catalogue will be sent upon application to the above-named company

THE CORBIN
MOTOR
VEHICLE
CORPORATION
New Britain, Conn.

PRICE, R . \$3500

PRICE, K . \$3650



MODEL: LIMOUSINE (R or K)

Color	Brewster green.	Cylinders	Four.
Seating Capacity	Five persons.	Arranged	Vertically, under hood.
Clutch	Cone, leather faced.	How Cast	Separately.
Wheel Base	108 inches.	Bore	4½ inches.
Gauge	56 inches.	Stroke	4¼ inches.
Tire Dimensions,		Cooling	R, air; K, water.
Front	34 x 4 inches.	Radiator	K, cellular.
Rear	34 x 4 inches.	Ignition	Jump spark; two sets of plugs.
Brakes	Four. TYPE: Internal expanding on rear wheels.	Electric Source	Storage battery; high tension magneto extra.
Horse-power	(A.L.A.M. rating), 32.4.	Drive	Shaft.
		Transmission	Selective sliding gear.
		Gear Changes	Three forward, one re- verse.

Descriptive catalogue will be sent upon application to the above-named company

CADILLAC
MOTOR CAR
COMPANY
Detroit, Michigan

PRICE . . . \$1000
With Oil Lamps



MODEL : M, DELIVERY.

Color Brewster green body and side bars, red running gear.

Carrying Capacity 600 pounds.

Clutch Flat disc.

Wheel Base 76 inches.

Gauge 56 inches (option 61 inches).

Tire Dimensions,

Front 30 x 3½ inches.

Rear 30 x 3½ inches.

Brakes Two. TYPE: Double acting, contracting on differential.

Horse-power . . (A.L.A.M. rating), 10.

Cylinders One.

Arranged Horizontally, under body.

Bore 5 inches.

Stroke 5 inches.

Cooling Water, copper jacketed cylinder.

Radiator Tubular, fin.

Ignition Jump spark.

Electric Source . Dry batteries.

Drive Single chain.

Transmission . . Planetary.

Gear Changes . . Two forward, one reverse.

Descriptive catalogue will be sent upon application to the above-named company

CADILLAC
MOTOR CAR
COMPANY

Detroit, Michigan



PRICE . . . \$850

With Oil Lamps

With Rubber Top

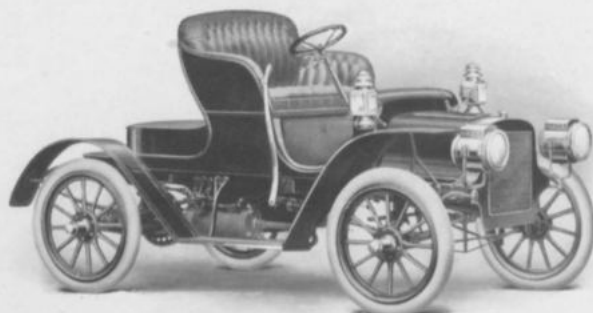
\$910

With Leather Top

\$930

With Leather Victoria

Top \$1025



MODEL : S.

Color	Dark blue body and side bars, running gear two shades lighter blue.	Cylinders	One.
Seating Capacity	Two persons.	Arranged	Horizontally, under body.
Clutch	Flat disc.	Bore	5 inches.
Wheel Base	82 inches.	Stroke	5 inches.
Gauge	56 inches (option 61 inches).	Cooling	Water, copper jacketed cylinder.
Tire Dimensions.		Radiator	Tubular, fin.
Front	30 x 3 inches.	Ignition	Jump spark.
Rear	30 x 3 inches.	Electric Source	Dry batteries.
Brakes	Two, TYPR: Contracting on differential.	Drive	Single chain.
Horse-power	(A.L.A.M. rating), 10.	Transmission	Planetary.
		Gear Changes	Two forward, one reverse.

Descriptive catalogue will be sent upon application to the above-named company

CADILLAC
MOTOR CAR
COMPANY

Detroit, Michigan

PRICE . . . \$1000

With Oil Lamps

With Cape Top \$1115



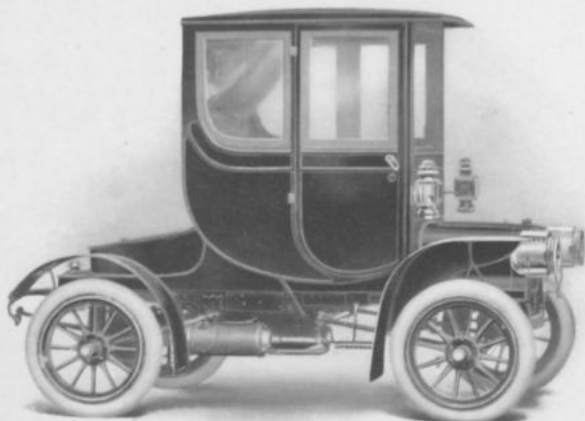
MODEL : T.

Color	Brewster green body and side bars, red running gear.	Cylinders	One.
Seating Capacity	Four persons.	Arranged	Horizontally, under body.
Clutch	Flat disc.	Bore	5 inches.
Wheel Base	82 inches.	Stroke	5 inches.
Gauge	56 inches (option 61 inches).	Cooling	Water, copper jacketed cylinder.
Tire Dimensions		Radiator	Tubular, fin.
Front	30 x 3½ inches.	Ignition	Jump spark.
Rear	30 x 3½ inches.	Electric Source	Dry batteries.
Brakes	Two. Type: Contracting on differential.	Drive	Single chain.
Horse-power	(A.L.A.M. rating), 10.	Transmission	Planetary.
		Gear Changes	Two forward, one reverse.

Descriptive catalogue will be sent upon application to the above-named company

CADILLAC
MOTOR CAR
COMPANY
Detroit, Michigan

PRICE . . \$1350
With Oil Lamps



MODEL : T, COUPE.

Color	Blue and black combination.	Cylinders	One.
Seating Capacity .	Two persons.	Arranged	Horizontally, under body.
Clutch	Flat disc.	Bore	5 inches.
Wheel Base	82 inches.	Stroke	5 inches.
Gauge	56 inches (option 61 inches).	Cooling	Water, copper jacketed cylinder.
Tire Dimensions,		Radiator	Tubular, fin.
Front	30 x 3½ inches.	Ignition	Jump spark.
Rear	30 x 3½ inches.	Electric Source .	Dry batteries.
Brakes	Two. TYPE: Contracting on differential.	Drive	Single chain.
Horse-power . . .	(A.L.A.M. rating), 10.	Transmission . .	Planetary.
		Gear Changes . .	Two forward, one reverse.

Descriptive catalogue will be sent upon application to the above-named company

**CADILLAC
MOTOR CAR
COMPANY**

Detroit, Michigan

PRICE . . . \$2000

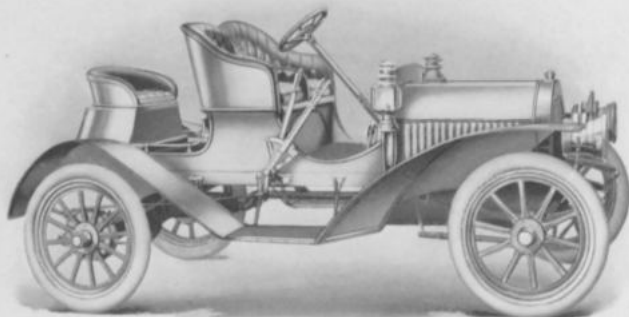
With Oil Lamps

With Leather Top

\$2110

With Leather Victoria

Top **\$2185**



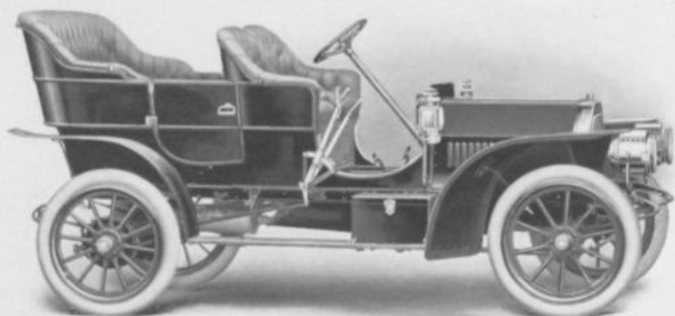
MODEL : G, RUNABOUT.

Color	French grey, red stripe.	Cylinders	Four.
Seating Capacity	Three persons.	Arranged	Vertically, under hood.
Clutch	Cone, leather faced.	How Cast	Separately.
Wheel Base	100 inches.	Bore	4 inches.
Gauge	56 inches (option 61 inches).	Stroke	4½ inches.
Tire Dimensions,		Cooling	Water, copper jacketed cylinders,
Front	32 x 3½ inches.	Radiator	Flat tubular.
Rear	32 x 3½ inches.	Ignition	Jump spark.
Brakes	Four. TYPE: Contracting and expanding on rear wheel drums.	Electric Source	Storage batteries.
Horse-power	(A.L.A.M. rating), 25.	Drive	Shaft.
		Transmission	Selective sliding gear.
		Gear Changes	Three forward, one reverse.

Descriptive catalogue will be sent upon application to the above-named company

CADILLAC
MOTOR CAR
COMPANY
Detroit, Michigan

PRICE . . . \$2000
With Oil Lamps
With Cape Top \$2160



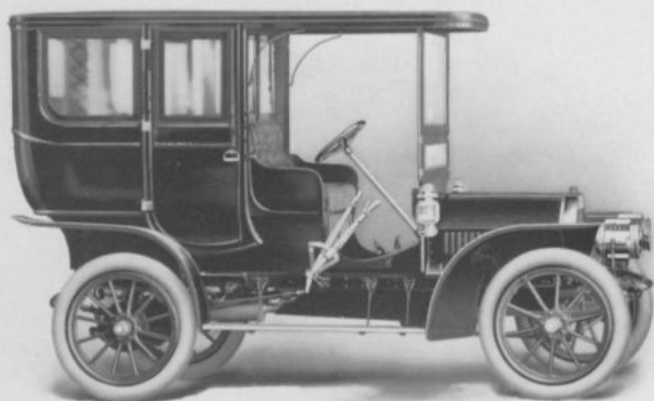
MODEL : G, TOURING CAR.

Color	Dark blue body and side bars, primrose running gear.	Cylinders	Four.
Seating Capacity	Five persons.	Arranged	Vertically, under hood.
Clutch	Cone, leather faced.	How Cast	Separately.
Wheel Base	100 inches.	Bore	4 inches.
Gauge	56 inches (option 61 inches).	Stroke	4½ inches.
Tire Dimensions.		Cooling	Water, copper jacketed cylinders.
Front	32 x 3½ inches.	Radiator	Flat tubular.
Rear	32 x 3½ inches.	Ignition	Jump spark.
Brakes	Four. TYPE: Contracting and expanding on rear wheel drums.	Electric Source	Storage batteries.
Horse-power	(A.L.A.M. rating), 25.	Drive	Shaft.
		Transmission	Selective sliding gear.
		Gear Changes	Three forward, one reverse.

Descriptive catalogue will be sent upon application to the above-named company

CADILLAC
MOTOR CAR
COMPANY
Detroit, Michigan

PRICE . . . \$3000
With Oil Lamps



MODEL : G, LIMOUSINE.

Color	Blue and black combination.	Cylinders	Four.
Seating Capacity	Five persons.	Arranged	Vertically, under hood.
Clutch	Cone, leather faced.	How Cast	Separately.
Wheel Base	100 inches.	Bore	4 inches.
Gauge	56 inches (option 61 inches).	Stroke	4½ inches.
Tire Dimensions,		Cooling	Water, copper jacketed cylinders.
Front	34 x 4 inches.	Radiator	Flat tubular.
Rear	34 x 4 inches.	Ignition	Jump spark.
Brakes	Four. TYPE : Contracting and expanding on rear wheel drums.	Electric Source	Storage batteries.
Horse-power	(A. L. A. M. rating), 25.	Drive	Shaft.
		Transmission	Selective sliding gear.
		Gear Changes	Three forward, one reverse.

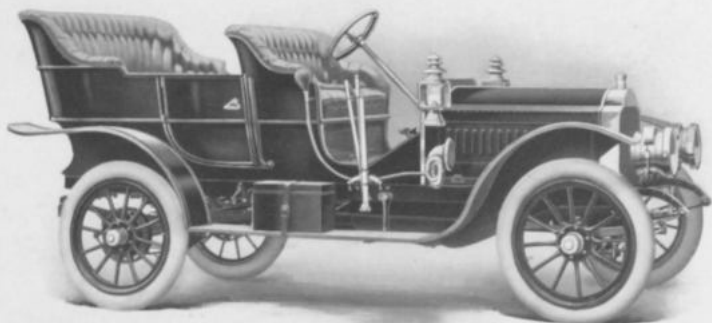
Descriptive catalogue will be sent upon application to the above-named company

ELMORE MFG.
COMPANY

Clyde, Ohio

PRICE . . . \$2500

With Folding Ex-
tension Top \$2625



MODEL : 40.

Color	Blue and red.	Cylinders	Four.
Seating Capacity	Five persons.	Arranged	Vertically, fore and aft.
Clutch	Expanding ring.	How Cast	Separately.
Wheel Base	108 inches.	Bore	4½ inches.
Gauge	56 inches.	Stroke	4 inches.
Tire Dimensions.		Cooling	Water.
Front	34 x 4 inches.	Radiator	Honeycomb.
Rear	34 x 4 inches.	Ignition	Jump spark.
Brakes	Two. TYPE: Internal and external on rear wheels.	Electric Source	Generator and dry batteries.
Horse-power	(A.L.A.M. rating), 35.	Drive	Shaft.
		Transmission	Selective sliding gear.
		Gear Changes	Three forward, one reverse.

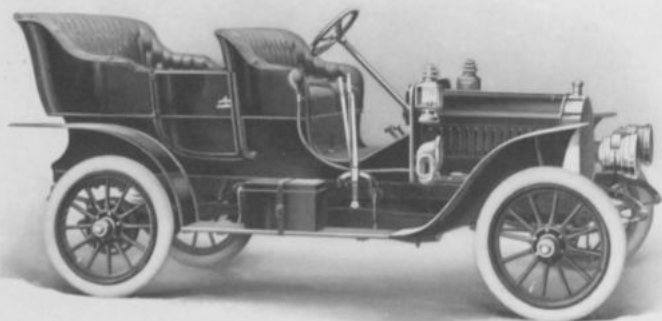
Descriptive catalogue will be sent upon application to the above-named company

ELMORE MFG.
COMPANY

Clyde, Ohio

PRICE . . \$1750

With Folding Ex-
tension Top \$1850



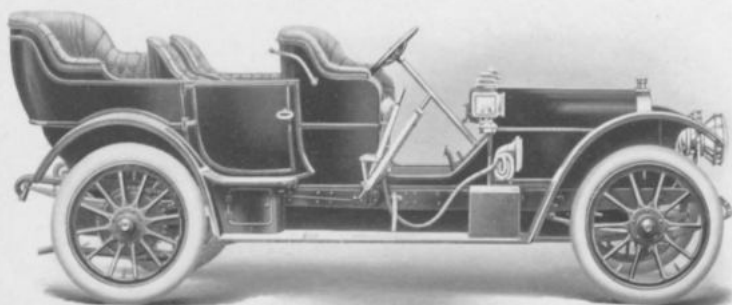
MODEL : 30.

Color	Blue and red.	Cylinders	Three.
Seating Capacity .	Five persons.	Arranged	Vertically, fore and aft.
Clutch	Expanding ring.	How Cast	Separately.
Wheel Base	102 inches.	Bore	4½ inches.
Gauge	56 inches.	Stroke	4 inches.
Tire Dimensions.		Cooling	Water.
Front	32 x 3½ inches.	Radiator	Honeycomb.
Rear	32 x 3½ inches.	Ignition	Jump spark.
Brakes	Two. TYPE: Internal and external on rear wheels.	Electric Source .	Generator and dry batteries.
Horse-power	(A.L.A.M. rating), 24.	Drive	Shaft.
		Transmission . .	Selective sliding gear.
		Gear Changes . .	Three forward, one reverse.

Descriptive catalogue will be sent upon application to the above-named company

F. B. STEARNS
 COMPANY
 Cleveland, Ohio

PRICE . . \$4750



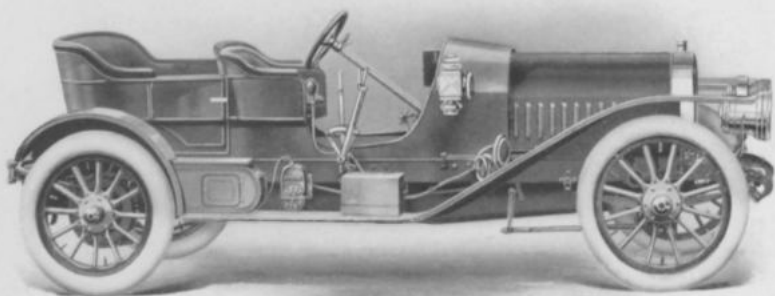
MODEL : STEARNS 30 PULLMAN TOURING CAR

Color	Optional.	Cylinders	Four.
Seating Capacity .	Seven persons.	Arranged	Vertically, under hood.
Clutch	Expanding.	How Cast	In pairs.
Wheel Base	120 inches.	Bore	5 $\frac{1}{2}$ inches.
Gauge	50 inches.	Stroke	5 $\frac{1}{2}$ inches.
Tire Dimensions.		Cooling	Water.
Front	36 x 4 inches.	Radiator	Honeycomb.
Rear	36 x 4 $\frac{1}{2}$ inches.	Ignition	Jump spark.
Brakes	Three. TYPE: Con- tracting on jack shaft; expanding on rear wheels.	Electric Source . .	Dry batteries and high tension magneto.
Horse-power	(A.L.A.M. rating), 46.22.	Drive	Double side chain.
		Transmission . . .	Selective sliding gear.
		Gear Changes . . .	Four forward, one re- verse.

Descriptive catalogue will be sent upon application to the above-named company

F. B. STEARNS
 COMPANY
 Cleveland, Ohio

PRICE . . \$6250



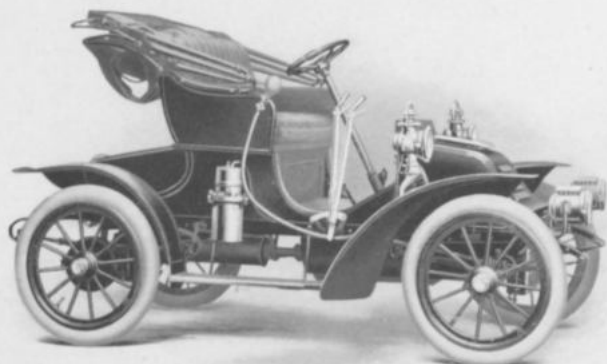
MODEL : STEARNS 45 ROADSTER.

Color	Optional.	Cylinders	Six.
Seating Capacity .	Four persons.	Arranged	Vertically, under hood.
Clutch	Internal expanding.	How Cast	In pairs.
Wheel Base	128 inches.	Bore	5½ inches.
Gauge	36 inches.	Stroke	5½ inches.
Tire Dimensions.		Cooling	Water.
Front	36 x 4 inches.	Radiator	Honeycomb.
Rear	36 x 4½ inches.	Ignition	Jump spark.
Brakes	Three. Type: Contracting on jack shaft; expanding on rear wheels.	Electric Source .	Dry batteries and high tension magneto.
Horse-power	(A. L. A. M. rating), 69.3.	Drive	Double side chain.
		Transmission . .	Selective sliding gear.
		Gear Changes . .	Four forward, one reverse.

Descriptive catalogue will be sent upon application to the above-named company

THE AUTOCAR
 COMPANY
 Ardmore, Pa.

PRICE . . \$1200
 With Bow Top



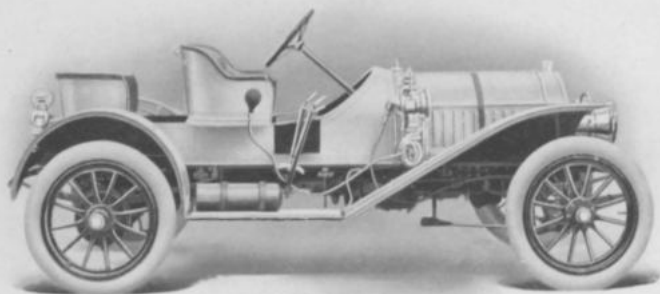
MODEL : XV.

Color	Red, or Brewster green.	Cylinders	Two.
Seating Capacity	Three persons.	Arranged	Horizontally, opposed, under hood.
Clutch	Floating ring.	How Cast	Separately.
Wheel Base	80 inches.	Bore	4 inches.
Gauge	54 inches.	Stroke	4 inches.
Tire Dimensions,		Cooling	Water.
Front	30 x 3 inches.	Radiator	Round tube, fin.
Rear	30 x 3 inches.	Ignition	Jump spark.
Brakes	Four. TYPE: Internal expanding and external contracting on rear wheels.	Electric Source	Storage battery.
Horse-power	(A.L.A.M. rating), 12.8.	Drive	Shaft.
		Transmission	Sliding gear.
		Gear Changes	Three forward, one reverse.

Descriptive catalogue will be sent upon application to the above-named company

THE AUTOCAR
 COMPANY
 Ardmore, Pa.

PRICE . . . \$2750



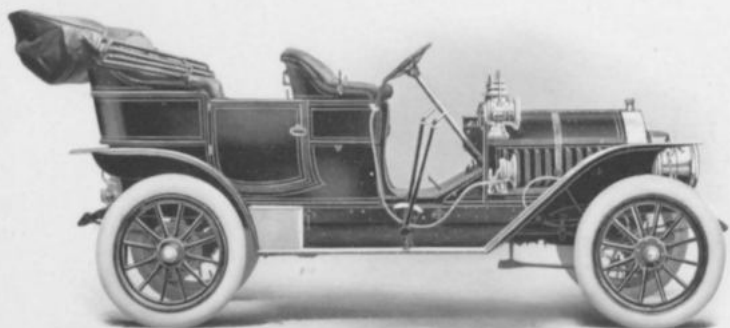
MODEL : XIV ROADSTER.

Color	Optional, (red, standard color).	Cylinders	Four.
Seating Capacity	Three persons.	Arranged	Vertically.
Clutch	Floating ring.	How Cast	Separately.
Wheel Base	112 inches.	Bore	4¼ inches.
Gauge	56 inches.	Stroke	4½ inches.
Tire Dimensions.		Cooling	Water.
Front	34 x 4 inches.	Radiator	Flat tube, fin.
Rear	34 x 4 inches.	Ignition	Jump spark.
Brakes	Four. TYPE: Internal expanding and external contracting on rear wheels.	Electric Source	Storage battery.
Horse-power	(A.L.A.M. rating), 30.	Drive	Shaft.
		Transmission	Sliding gear.
		Gear Changes	Three forward, one reverse.

Descriptive catalogue will be sent upon application to the above-named company

THE AUTOCAR
COMPANY
Ardmore, Pa.

PRICE . . . \$2750



MODEL : XIV.

Color Red, or Brewster green.

Seating Capacity : Five persons.

Clutch Floating ring.

Wheel Base 112 inches.

Gauge 56 inches.

Tire Dimensions.

Front 34 x 4 inches.

Rear 34 x 4 inches.

Brakes Four. TYPE: Internal expanding and external contracting on rear wheels.

Horse-power . . . (A.L.A.M. rating), 30.

Cylinders Four.

Arranged Vertically.

How Cast Separately.

Bore 4¼ inches.

Stroke 4½ inches.

Cooling Water.

Radiator Flat tube, fin.

Ignition Jump spark.

Electric Source . . Storage battery.

Drive Shaft.

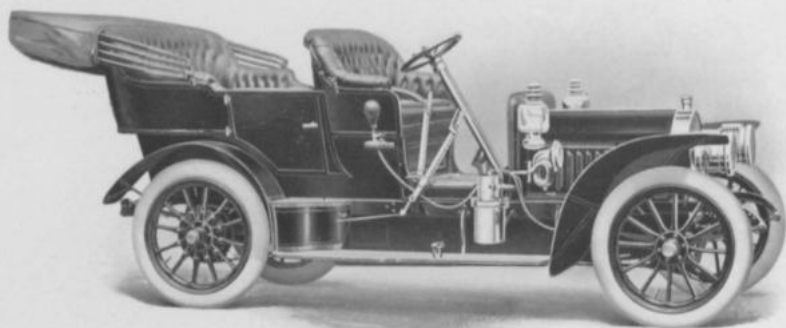
Transmission . . . Sliding gear.

Gear Changes . . . Three forward, one reverse.

Descriptive catalogue will be sent upon application to the above-named company

THE LOCOMO-
BILE CO. OF
A M E R I C A
Bridgeport, Conn.

PRICE . . . \$2900
With Cape Top \$3060



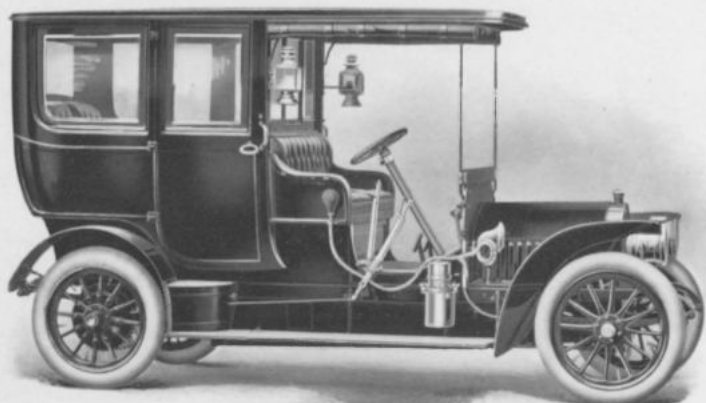
MODEL : E, STANDARD.

Color	Optional.	Cylinders	Four.
Seating Capacity	Five persons.	Arranged	Vertically, under hood.
Clutch	Cone.	How Cast	In pairs.
Wheel Base	102 inches.	Bore	3¼ inches.
Gauge	50 inches.	Stroke	4½ inches.
Tire Dimensions.		Cooling	Water.
Front	32 x 4 inches.	Radiator	Cellular.
Rear	32 x 4 inches.	Ignition	Make-and-break.
Brakes	Three. TYPE: Double acting—contracting on countershaft, expanding on rear wheels.	Electric Source	Low tension magneto.
Horse-power	(A.L.A.M. rating), 20.	Drive	Double side chain.
		Transmission	Selective sliding gear.
		Gear Changes	Four forward, one reverse.

Descriptive catalogue will be sent upon application to the above-named company

THE LOCOMO-
BILE CO. OF
A M E R I C A
Bridgeport, Conn.

PRICE . . . \$4200



MODEL : E, LIMOUSINE.

Color Optional.

Seating Capacity . Six persons.

Clutch Cone.

Wheel Base . . . 116 inches.

Gauge 50 inches.

Tire Dimensions.

Front 32 x 4 inches.

Rear 32 x 4½ inches.

Brakes Three. TYPE: Double acting—contracting on countershaft, expanding on rear wheels.

Horse-power . . (A.L.A.M. rating), 20.

Cylinders Four.

Arranged Vertically, under hood.

How Cast In pairs.

Bore 3¾ inches.

Stroke 4½ inches.

Cooling Water.

Radiator Cellular.

Ignition Make-and-break.

Electric Source . Low tension magneto.

Drive Double side chain.

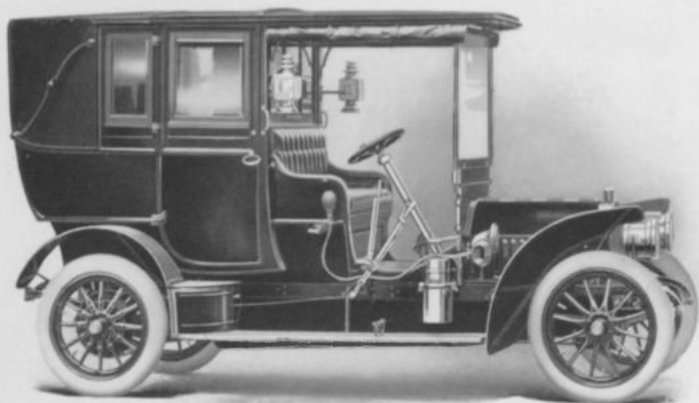
Transmission . . Selective sliding gear.

Gear Changes . . Four forward, one reverse.

Descriptive catalogue will be sent upon application to the above-named company

THE LOCOMO-
BILE CO. OF
A M E R I C A
Bridgeport, Conn.

PRICE . . . \$4300



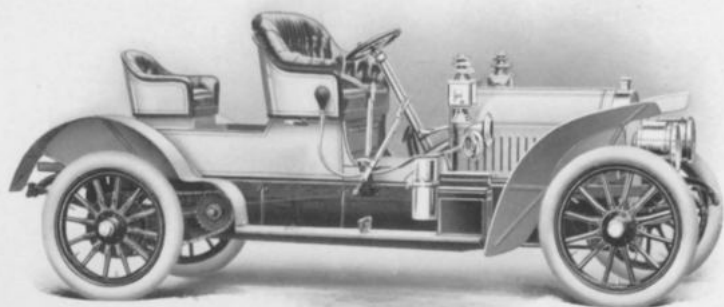
MODEL : E, LANDAULET.

Color	Optional.	Cylinders	Four.
Seating Capacity	Six persons.	Arranged	Vertically, under hood.
Clutch	Cone.	How Cast	In pairs.
Wheel Base	116 inches.	Bore	3¼ inches.
Gauge	50 inches.	Stroke	4½ inches.
Tire Dimensions.		Cooling	Water.
Front	32 x 4 inches.	Radiator	Cellular.
Rear	32 x 4½ inches.	Ignition	Make-and-break.
Brakes	Three. Type: Double acting—contracting on countershaft, expanding on rear wheels.	Electric Source	Low tension magneto.
Horse-power	(A.L.A.M. rating), 20.	Drive	Double side chain.
		Transmission	Selective sliding gear.
		Gear Changes	Four forward, one re- verse.

Descriptive catalogue will be sent upon application to the above-named company

THE LOCOMO-
BILE CO. OF
AMERICA
Bridgeport, Conn.

PRICE . . \$4750



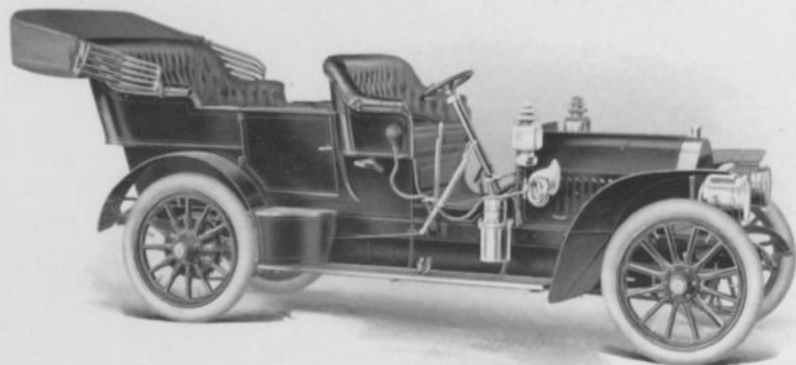
MODEL : I, RUNABOUT.

Color	Optional.	Cylinders	Four.
Seating Capacity	Three persons.	Arranged	Vertically, under hood.
Clutch	Cone.	How Cast	In pairs.
Wheel Base	123 inches.	Bore	5 inches.
Gauge	54 inches.	Stroke	6 inches.
Tire Dimensions.		Cooling	Water.
Front	36 x 4 inches.	Radiator	Cellular.
Rear	36 x 4½ inches.	Ignition	Make-and-break.
Brakes	Three. TYPE: Double acting—contracting on countershaft, expanding on rear wheels.	Electric Source	Low tension magneto.
Horse-power	(A.L.A.M. rating), 40.	Drive	Double side chain.
		Transmission	Selective sliding gear.
		Gear Changes	Four forward, one reverse.

Descriptive catalogue will be sent upon application to the above-named company

THE LOCOMO-
BILE CO. OF
A M E R I C A
Bridgeport, Conn.

PRICE . . . \$4750
With Cape Top \$4945



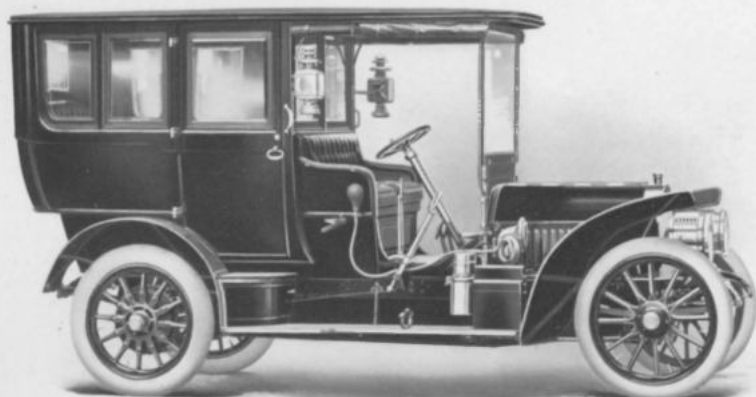
MODEL : I, STANDARD.

Color	Optional.	Cylinders	Four.
Seating Capacity	Seven persons.	Arranged	Vertically, under hood.
Clutch	Cone.	How Cast	In pairs.
Wheel Base	121 inches.	Bore	5 inches.
Gauge	54 inches.	Stroke	6 inches.
Tire Dimensions.		Cooling	Water.
Front	36 x 4 inches.	Radiator	Cellular.
Rear	36 x 4½ inches.	Ignition	Make-and break.
Brakes	Three. Type: Double acting—contracting on countershaft, expanding on rear wheels.	Electric Source	Low tension magneto.
Horse-power	(A.L.A.M. rating), 40.	Drive	Double side chain.
		Transmission	Selective sliding gear.
		Gear Changes	Four forward, one re- verse.

Descriptive catalogue will be sent upon application to the above-named company

THE LOCOMO-
BILE CO. OF
A M E R I C A
Bridgeport, Conn.

PRICE . . \$6200



MODEL : I, LIMOUSINE.

Color	Optional.	Cylinders	Four.
Seating Capacity .	Seven persons.	Arranged	Vertically, under hood.
Clutch	Cone.	How Cast	In pairs.
Wheel Base	123 inches.	Bore	5 inches.
Gauge	54 inches.	Stroke	6 inches.
Tire Dimensions,		Cooling	Water.
Front	36 x 4 inches.	Radiator	Cellular.
Rear	36 x 5 inches.	Ignition	Make-and-break.
Brakes	Three. TYPE: Double acting—contracting on countershaft, expanding on rear wheels.	Electric Source . . .	Low tension magneto.
Horse-power	(A.L.A.M. rating), 40.	Drive	Double side chain.
		Transmission	Selective sliding gear.
		Gear Changes	Four forward, one re- verse.

Descriptive catalogue will be sent upon application to the above-named company

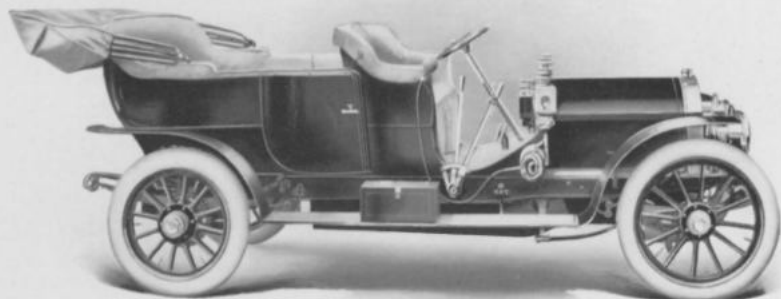
WALTER AU-
TOMOBILE CO.

OF N. J.

49-51 West Sixty-
sixth Street, N. Y.

PRICE . . \$5000

With Cape Top \$5150



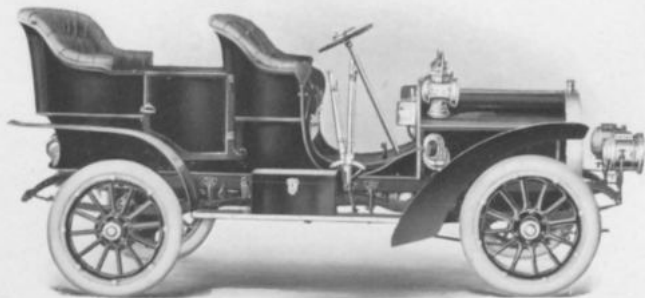
MODEL : 1908.

Color	Optional.	Cylinders	Four.
Seating Capacity	Seven persons.	Arranged	Vertically, under hood.
Clutch	Metallic or inverted cone.	How Cast	In pairs.
Wheel Base	120 inches.	Bore	5 inches.
Gauge	56 inches.	Stroke	5½ inches.
Tire Dimensions,		Cooling	Water.
Front	36 x 4 inches.	Radiator	Honeycomb.
Rear	36 x 5 inches.	Ignition	Jump spark.
Brakes	Three. TYPE: Metallic on gear box and rear wheels.	Electric Source	Storage battery and high tension magneto.
Horse-power	44.	Drive	Shaft.
		Transmission	Selective.
		Gear Changes	Four forward, one re- verse.

Descriptive catalogue will be sent upon application to the above-named company

STEVENS -
DURYEA CO.
Chicopee Falls, Mass.

PRICE . . \$2500
With Folding Top
\$2600



MODEL : R.

Color Brewster green.

Seating Capacity . Five persons.

Clutch Multiple disc.

Wheel Base 90 inches.

Gauge 56 inches.

Tire Dimensions.

Front 30 x 3½ inches.

Rear 30 x 3½ inches.

Brakes Three. TYPE: Internal expanding on rear wheels; contracting on transmission.

Horse-power 20.

Cylinders Four.

Arranged Vertically.

How Cast Separately, with water jackets integral.

Bore 3¾ inches.

Stroke 4½ inches.

Cooling Water.

Radiator Cellular.

Ignition Jump spark.

Electric Source . Dry batteries.

Drive Shaft.

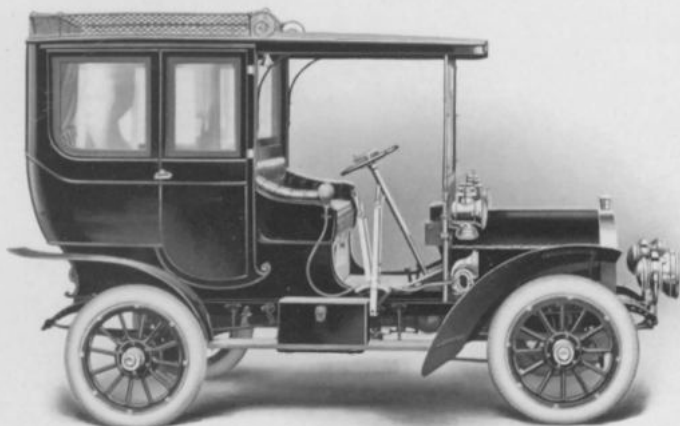
Transmission . . Sliding gear.

Gear Changes . . Three forward, one reverse.

Descriptive catalogue will be sent upon application to the above-named company

STEVENS-
DURYEA CO.
Chicopee Falls, Mass.

PRICE . . . \$3300



MODEL : R, LIMOUSINE.

Color Brewster green.

Seating Capacity . Five persons.

Clutch Multiple disc.

Wheel Base 90 inches.

Gauge 56 inches.

Tire Dimensions.

Front 31 x 4 inches.

Rear 31 x 4 inches.

Brakes Three. TYPE: Contracting on driving shaft and expanding on rear wheels.

Horse-power 20.

Cylinders Four.

Arranged Vertically, under hood.

How Cast Separately, with water jackets integral.

Bore 3 $\frac{1}{4}$ inches.

Stroke 4 $\frac{1}{2}$ inches.

Cooling Water.

Radiator Cellular.

Ignition Jump spark.

Electric Source . Dry batteries.

Drive Shaft.

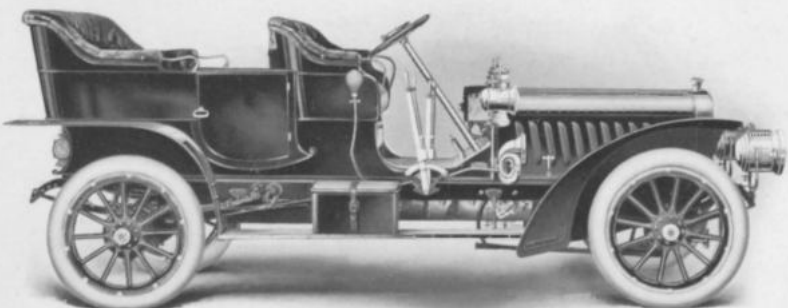
Transmission . . Sliding gear.

Gear Changes . . Three forward, one reverse.

Descriptive catalogue will be sent upon application to the above-named company

STEVENS-
DURYEA CO.
Chicopee Falls, Mass.

PRICE . . . \$3500
With Cape Top, \$3650



MODEL : U, "LIGHT SIX."

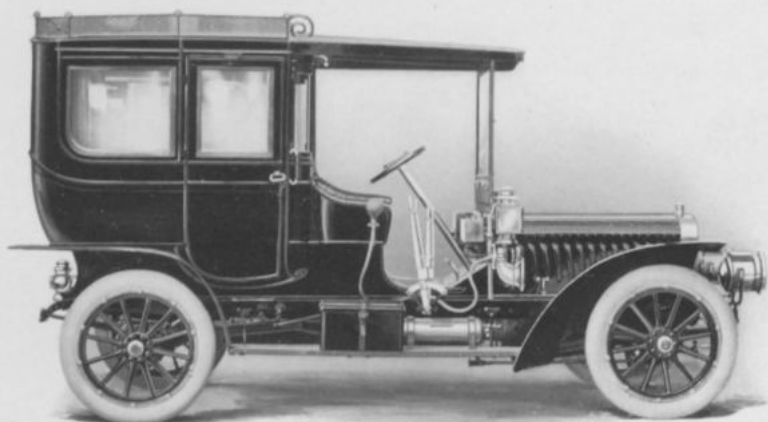
Color	Maroon body, black underbody, and light red running gear.	Cylinders	Six.
Seating Capacity .	Five persons.	Arranged	Vertically, under hood.
Clutch	Multiple disc.	How Cast	Separately, with water jackets integral.
Wheel Base	114 inches.	Bore	3 $\frac{3}{4}$ inches.
Gauge	56 inches.	Stroke	4 $\frac{1}{4}$ inches.
Tire Dimensions,		Cooling	Water.
Front	34 x 4 inches.	Radiator	Cellular.
Rear	34 x 4 inches.	Ignition	Jump spark.
Brakes	Four. TYPE: Contracting and expanding on rear wheels.	Electric Source .	Storage and dry batteries.
Horse-power	35.	Drive	Shaft.
		Transmission . .	Sliding gear.
		Gear Changes . .	Three forward, one reverse.

Descriptive catalogue will be sent upon application to the above-named company

STEVENS-
DURYEA CO.

Chicopee Falls, Mass.

PRICE . . . \$4500



MODEL : U, LIMOUSINE.

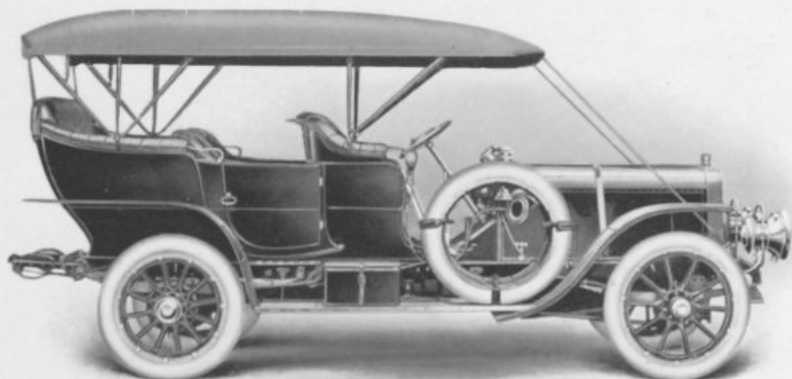
Color	Maroon body, with black trimmings and crimson running gear.	Cylinders	Six.
Seating Capacity	Seven persons.	Arranged	Vertically, under hood.
Clutch	Multiple disc.	How Cast	Separately, with water jackets integral.
Wheel Base	114 inches.	Bore	3 $\frac{3}{8}$ inches.
Gauge	56 inches.	Stroke	4 $\frac{1}{4}$ inches.
Tire Dimensions.		Cooling	Water.
Front	34 x 4 inches.	Radiator	Cellular.
Rear	34 x 4 inches.	Ignition	Jump spark.
Brakes	Four. TYPE : Contracting and expanding on rear wheels.	Electric Source	Storage and dry batteries.
Horse-power	35.	Drive	Shaft.
		Transmission	Sliding gear.
		Gear Changes	Three forward, one reverse.

Descriptive catalogue will be sent upon application to the above-named company

STEVENS -
DURYEA CO.

Chicopee Falls, Mass.

PRICE . . . \$6000
With Extension Top



MODEL : S, "BIG SIX."

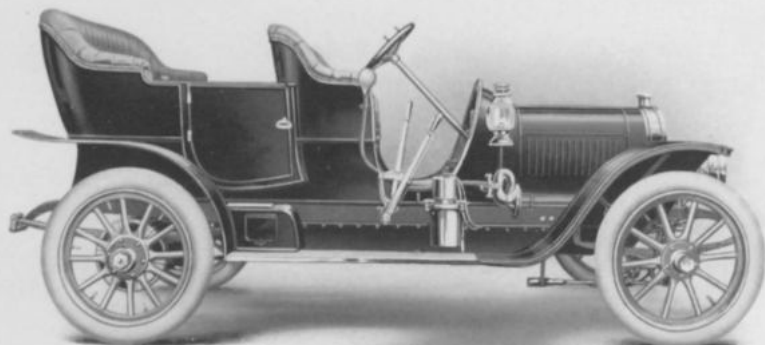
Color	S.-D. green, with crimson running gear.	Cylinders	Six.
Seating Capacity .	Seven persons.	Arranged	Vertically, under hood.
Clutch	Multiple disc.	How Cast	Separately.
Wheel Base	122 inches.	Bore	4¾ inches.
Gauge	56 inches.	Stroke	5¾ inches.
Tire Dimensions,		Cooling	Water.
Front	36 x 4 inches.	Radiator	Cellular.
Rear	36 x 5 inches.	Ignition	Jump spark.
Brakes	Four. TYPE : Contracting and expanding on rear wheels.	Electric Source .	Storage and dry batteries.
Horse-power	50.	Drive	Shaft.
		Transmission . .	Sliding gear.
		Gear Changes . .	Three forward, one reverse.

Descriptive catalogue will be sent upon application to the above-named company

POPE MANU-
FACTURING
COMPANY
Hartford, Conn.

PRICE . . . \$2750

Any Style Top, \$150
Extra



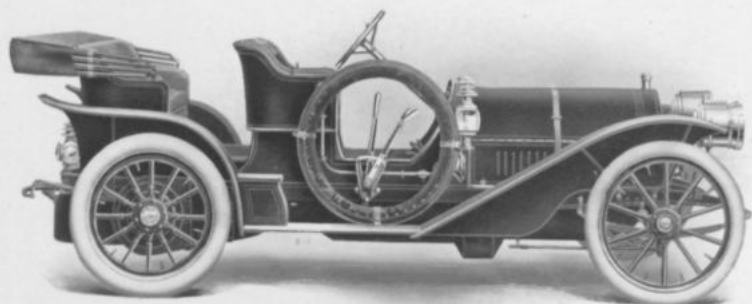
MODEL: POPE-HARTFORD, M.

Color	To specifications	Cylinders	Four.
Seating Capacity	Five persons.	Arranged	Vertically, under hood.
Clutch	Cone, leather faced.	How Cast	In pairs.
Wheel Base	112 inches.	Bore	4½ inches.
Gauge	56 inches.	Stroke	5½ inches.
Tire Dimensions		Cooling	Water.
Front	34 x 3½ inches.	Radiator	Planetic.
Rear	34 x 4 inches.	Ignition	Jump spark.
Brakes	Two. TYPE: Internal expanding on trans- mission shaft and rear wheels.	Electric Source	Magneto.
Horse-power	(A. L. A. M. rating), 30.	Drive	Shaft.
		Transmission	Selective.
		Gear Changes	Three forward, one re- verse.

Descriptive catalogue will be sent upon application to the above-named company

POPE MOTOR
CAR COMPANY
Toledo, Ohio

PRICE . . . \$4750
With Cape Extension
Front Top, \$4975



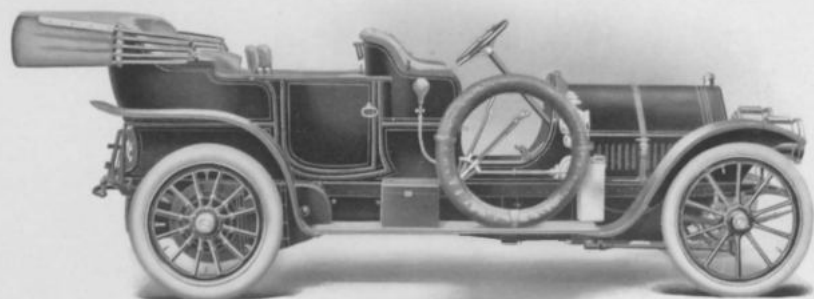
MODEL: POPE-TOLEDO, TYPE XVIII, TOURING RUNABOUT.

Color	Body, grey-green; running gear, green-grey.	Cylinders	Four.
Seating Capacity	Two in front; two in auxiliary seat.	Arranged	Vertically.
Clutch	Multiple disc.	How Cast	In pairs, with copper water jackets.
Wheel Base	115 inches.	Bore	4 $\frac{3}{8}$ inches.
Gauge	56 inches.	Stroke	5 $\frac{3}{4}$ inches.
Tire Dimensions,		Cooling	Pump and fan.
Front	36 x 4 inches.	Radiator	"Pope-Toledo" plan-etic.
Rear	36 x 4 $\frac{1}{2}$ inches.	Ignition	Jump spark; two sets of plugs.
Brakes	Three. TYPE: Two expanding and one contracting, on shaft and rear wheels.	Electric Source	Storage battery and high tension magneto.
Horse-power	(A.L.A.M. rating), 38.	Drive	Double side chain.
		Transmission	Sliding gear.
		Gear Changes	Four forward, one reverse.

Descriptive catalogue will be sent upon application to the above-named company

POPE MOTOR
CAR COMPANY
Toledo, Ohio

PRICE . . . \$4750
With Cape Extension
Front Top, \$4975



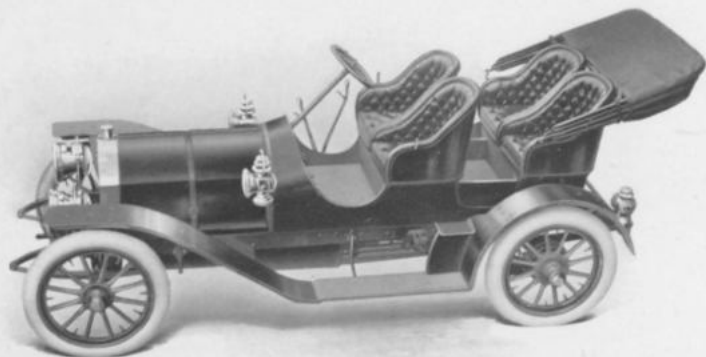
MODEL: POPE-TOLEDO, TYPE XVII, TOURING CAR.

Color	Military blue, Brewster green or dark red.	Cylinders	Four.
Seating Capacity	Seven persons.	Arranged	Vertically, fore and aft.
Clutch	Multiple disc.	How Cast	In pairs, with copper water jackets.
Wheel Base	126 inches.	Bore	4 $\frac{1}{4}$ inches.
Gauge	56 inches.	Stroke	5 $\frac{1}{4}$ inches.
Tire Dimensions,		Cooling	Pump and fan.
Front	36 x 4 inches.	Radiator	"Pope-Toledo" plan-etic.
Rear	36 x 4 $\frac{1}{2}$ inches.	Ignition	Jump spark; two sets of plugs.
Brakes	Three. TYPE: Two ex- panding and one con- tracting, on shaft and rear wheels.	Electric Source	Storage battery and high tension magneto.
Horse-power	(A. L. A. M. rating), 38.	Drive	Double side chain.
		Transmission	Sliding gear.
		Gear Changes	Four forward, one re- verse.

Descriptive catalogue will be sent upon application to the above-named company

APPERSON
BROS. AUTO-
MOBILE CO.
Kokomo, Indiana

PRICE . . . \$2750



MODEL: M.

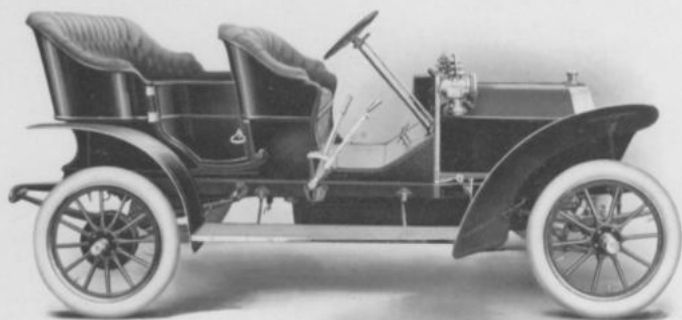
Color	Red.	Cylinders	Four.
Seating Capacity	Four persons.	Arranged	Vertically, under hood.
Clutch	Contracting friction.	How Cast	Separately.
Wheel Base	106½ inches.	Bore	4¼ inches.
Gauge	36 inches.	Stroke	5 inches.
Tire Dimensions,		Cooling	Water.
Front	34 x 4 inches.	Radiator	Vertical tubular.
Rear	34 x 4 inches.	Ignition	Jump spark.
Brakes	Four. TYPE: Contracting and expanding on rear wheels.	Electric Source	Storage battery and high tension magneto.
Horse-power	(A.L.A.M. rating), 36.1.	Drive	Shaft.
		Transmission	Selective sliding gear.
		Gear Changes	Three forward, one reverse.

Descriptive catalogue will be sent upon application to the above-named company

**OLDS MOTOR
WORKS**

Lansing, Michigan

PRICE . . \$1900



MODEL: X, OLDSMOBILE.

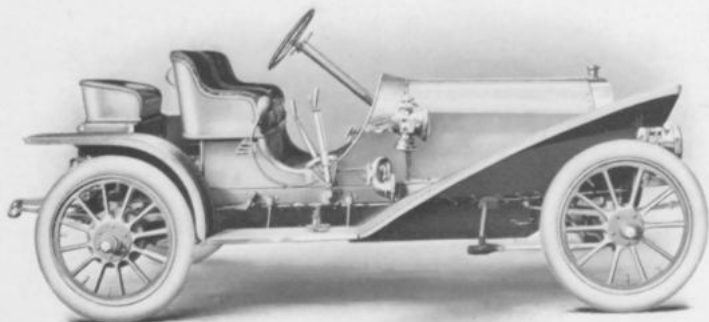
Color	Dark green and red.	Cylinders	Four.
Seating Capacity .	Five persons.	Arranged	Vertically, under hood.
Clutch	Cone, leather faced (internal).	How Cast	In pairs.
Wheel Base	106½ inches.	Bore	4½ inches.
Gauge	55 inches.	Stroke	4¾ inches.
Tire Dimensions.		Cooling	Water.
Front	32 x 3½ inches.	Radiator	Vertical tube.
Rear	32 x 3½ inches.	Ignition	Jump spark.
Brakes	Two. TYPE: Expanding on wheel and contracting on transmission.	Electric Source .	Storage and dry batteries.
Horse-power . . .	(A. L. A. M. rating), 32.	Drive	Shaft.
		Transmission . .	Selective sliding gear.
		Gear Changes . .	Three forward, one reverse.

Descriptive catalogue will be sent upon application to the above-named company

**OLDS MOTOR
WORKS**

Lansing, Michigan

PRICE . . . \$2750



MODEL: M. R., OLDSMOBILE FLYING ROADSTER.

Color Optional.

Seating Capacity . Three persons.

Clutch Internal cone.

Wheel Base . . . 106½ inches.

Gauge 56 inches.

Tire Dimensions.

Front 34 x 3½ inches.

Rear 34 x 4 inches.

Brakes Four. TYPE: Contracting and expanding on rear wheels.

Horse-power . . . (A. L. A. M. rating), 36.

Cylinders Four.

Arranged Vertically, under hood.

How Cast In pairs.

Bore 4¼ inches.

Stroke 4¼ inches.

Cooling Water.

Radiator Vertical tube.

Ignition Jump spark.

Electric Source . Storage and dry batteries; magneto extra.

Drive Shaft.

Transmission . . Selective sliding gear.

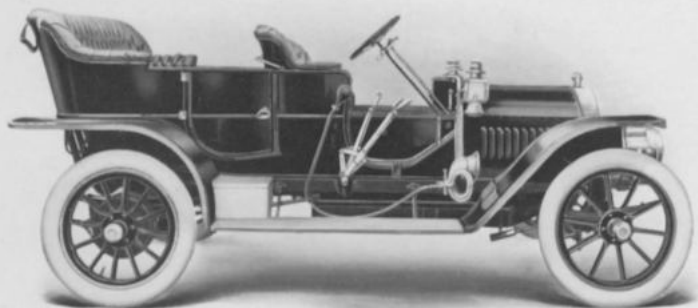
Gear Changes . . . Three-forward, one-reverse.

Descriptive catalogue will be sent upon application to the above-named company

**OLDS MOTOR
WORKS**

Lansing, Michigan

PRICE . . . \$2750



MODEL : M, OLDSMOBILE PALACE TOURING CAR.

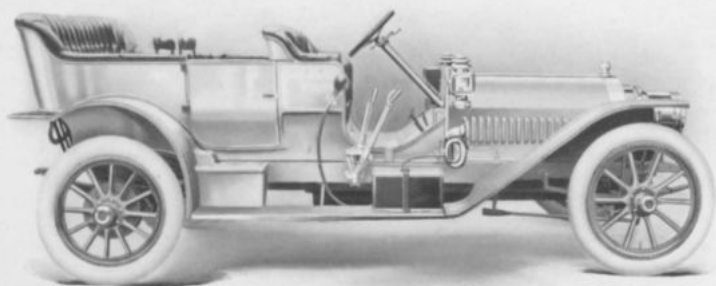
Color	Optional.	Cylinders	Four.
Seating Capacity	Five persons.	Arranged	Vertically, under hood.
Clutch	Internal cone.	How Cast	In pairs.
Wheel Base	112½ inches.	Bore	4¾ inches.
Gauge	56 inches.	Stroke	4¾ inches.
Tire Dimensions,		Cooling	Water.
Front	34 x 3½ inches.	Radiator	Vertical tube.
Rear	34 x 4 inches.	Ignition	Jump spark.
Brakes	Two, TYPE: Expanding and contracting on rear wheels.	Electric Source	Storage battery; arranged for magneto.
Horse-power	(A.L.A.M. rating), 36.	Drive	Shaft.
		Transmission	Selective sliding gear.
		Gear Changes	Three forward, one reverse.

Descriptive catalogue will be sent upon application to the above-named company

OLDS MOTOR
WORKS

Lansing, Michigan

PRICE . . . \$4200



MODEL: Z SIX, OLDSMOBILE.

Color	Optional.	Cylinders	Six.
Seating Capacity	Seven persons.	Arranged	Vertically, under hood.
Clutch	Cone, internal.	How Cast	In pairs.
Wheel Base	130 inches.	Bore	4½ inches.
Gauge	56 inches.	Stroke	4¾ inches.
Tire Dimensions,		Cooling	Water.
Front	36 x 4½ inches.	Radiator	Vertical tube.
Rear	36 x 5 inches.	Ignition	Jump spark.
Brakes	Two. TYPE: Expanding and contracting on rear wheels.	Electric Source	Storage battery and magneto.
Horse-power	(A.L.A.M. rating), 48.	Drive	Shaft.
		Transmission •	Selective sliding gear.
		Gear Changes	Three forward, one reverse.

Descriptive catalogue will be sent upon application to the above-named company

HAYNES AUTO
 COMPANY
 Kokomo, Indiana

PRICE . . . \$3000



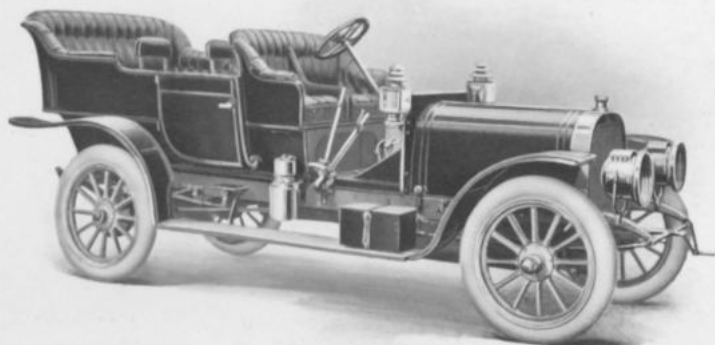
MODEL : W.

Color	Dark green or red.	Cylinders	Four.
Seating Capacity	Five persons.	Arranged	Vertically, under hood.
Clutch	Haynes band.	How Cast	In pairs.
Wheel Base	106 inches.	Bore	4¾ inches.
Gauge	56 inches.	Stroke	5 inches.
Tire Dimensions.		Cooling	Water.
Front	34 x 4 inches.	Radiator	Honeycomb.
Rear	34 x 4 inches.	Ignition	Jump spark.
Brakes	Four. TYPE: Expanding and contracting on rear wheels.	Electric Source	High tension magneto and storage battery.
Horse-power	45.	Drive	Shaft.
		Transmission	Selective sliding gear.
		Gear Changes	Three forward, one reverse.

Descriptive catalogue will be sent upon application to the above-named company.

HAYNES AUTO
COMPANY
Kokomo, Indiana

PRICE . . \$3750



MODEL : U.

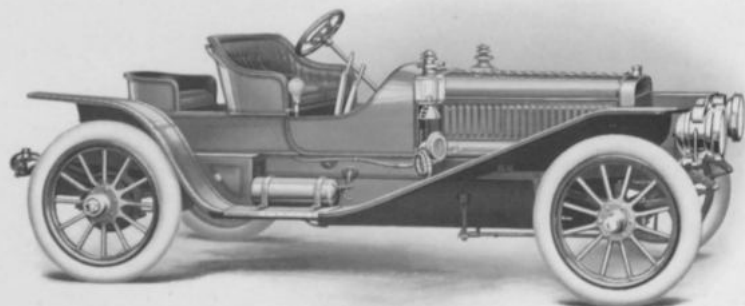
Color	Dark green or red.	Cylinders	Four.
Seating Capacity	Seven persons.	Arranged	Vertically, under hood.
Clutch	Haynes band.	How Cast	Separately.
Wheel Base	118 inches.	Bore	5½ inches.
Gauge	56 inches.	Stroke	6 inches.
Tire Dimensions.		Cooling	Water.
Front	36 x 4½ inches.	Radiator	Honeycomb.
Rear	36 x 4½ inches.	Ignition	Jump spark.
Brakes	Four. TYPE: Expanding and contracting on rear wheels.	Electric Source	High tension magneto and storage battery.
Horse-power	100.	Drive	Shaft.
		Transmission	Selective sliding gear.
		Gear Changes	Three forward, one reverse.

Descriptive catalogue will be sent upon application to the above-named company

THE WINTON
MOTOR CAR-
RIAGE CO.
Cleveland, Ohio



PRICE . . \$4500



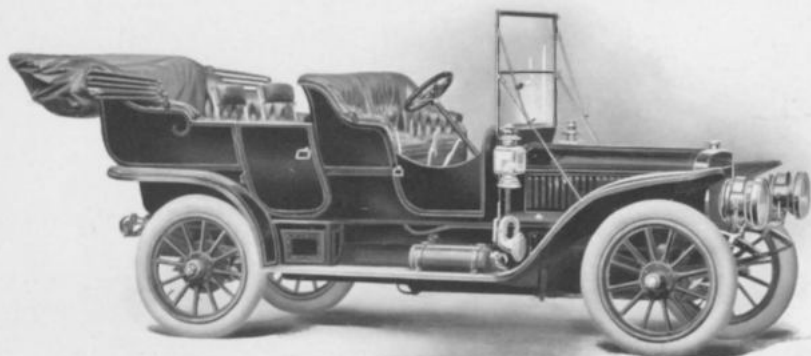
MODEL : SIX-TEEN-SIX, RUNABOUT.

Color	Optional.	Cylinders	Six.
Seating Capacity	Three persons.	Arranged	Vertically, under hood.
Clutch	Multiple disc.	How Cast	In pairs.
Wheel Base	120 inches.	Bore	4½ inches.
Gauge	56½ inches.	Stroke	5 inches.
Tire Dimensions		Cooling	Water.
Front	36 x 4½ inches.	Radiator	Vertical tubes with fins.
Rear	36 x 4½ inches.	Ignition	Jump spark.
Brakes	Four. TYPE: Contracting and expanding on rear wheels.	Electric Source	High tension magneto and batteries.
Horse-power	(A.L.A.M. rating), 48.	Drive	Shaft.
		Transmission	Selective sliding gear.
		Gear Changes	Three forward, one reverse.

Descriptive catalogue will be sent upon application to the above-named company

THE WINTON
MOTOR CAR-
RIAGE CO.
Cleveland, Ohio

PRICE . . \$4500
With 5-bow Top



MODEL : SIX-TEEN-SIX, TOURING CAR.

Color	Red, blue, green or grey.	Cylinders	Six.
Seating Capacity	Seven persons.	Arranged	Vertically, under hood.
Clutch	Multiple disc.	How Cast	In pairs.
Wheel Base	120 inches.	Bore	4½ inches.
Gauge	56½ inches.	Stroke	5 inches.
Tire Dimensions,		Cooling	Water.
Front	36 x 4½ inches.	Radiator	Vertical tubes with fins.
Rear	36 x 4½ inches.	Ignition	Jump spark.
Brakes	Four. TYPE: Contracting and expanding on rear wheels.	Electric Source	High tension magneto and storage battery.
Horse-power	(A.L.A.M. rating), 48.	Drive	Shaft.
		Transmission	Selective sliding gear.
		Gear Changes	Three forward, one reverse.

Descriptive catalogue will be sent upon application to the above-named company

THE WINTON
MOTOR CAR-
RIAGE CO.
Cleveland, Ohio

PRICE . . . \$5500



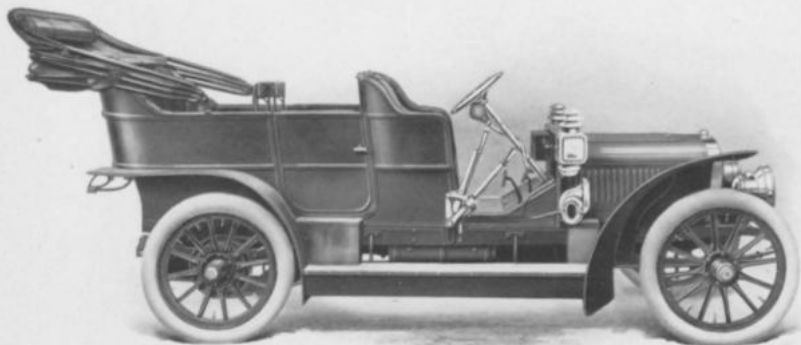
MODEL : SIX-TEEN-SIX, LIMOUSINE.

Color	Optional.	Cylinders	Six.
Seating Capacity	Seven persons.	Arranged	Vertically, under hood.
Clutch	Multiple disc.	How Cast	In pairs.
Wheel Base	120 inches.	Bore	4½ inches.
Gauge	56½ inches.	Stroke	5 inches.
Tire Dimensions,		Cooling	Water.
Front	36 x 4½ inches.	Radiator	Vertical tubes with fins.
Rear	36 x 4½ inches.	Ignition	Jump spark.
Brakes	Four. TYPE: Contracting and expanding on rear wheels.	Electric Source	High tension magneto and batteries.
Horse-power	(A.L.A.M. rating), 48.	Drive	Shaft.
		Transmission	Selective sliding gear.
		Gear Changes	Three forward, one reverse.

Descriptive catalogue will be sent upon application to the above-named company

**THE LOZIER
MOTOR CO.**
*Fifty-fifth Street and
Broadway, N. Y.*

PRICE . . . \$4000
With Extension Cape
Top, \$4200
Limousine . . . \$5000



MODEL : G.

Color Four options.
Seating Capacity . . . Seven persons.
Clutch Multiple disc.
Wheel Base 117 inches.
Gauge 56 inches.
Tire Dimensions.
Front 36 x 4 inches.
Rear 36 x 4½ inches.
Brakes Four. TYPE: External
contracting and internal
expanding; two water-
cooled on transmission,
two emergency on rear
wheels.
Horse-power 40.

Cylinders Four.
Arranged Vertically, under hood.
How Cast In pairs.
Bore 4½ inches.
Stroke 5½ inches.
Cooling Water.
Radiator Honeycomb.
Ignition Jump spark, double sys-
tem.
Electric Source . . . Storage battery and high
tension magneto.
Drive Double side chain.
Transmission Selective sliding gear.
Gear Changes Four forward, one re-
verse.

Descriptive catalogue will be sent upon application to the above-named company

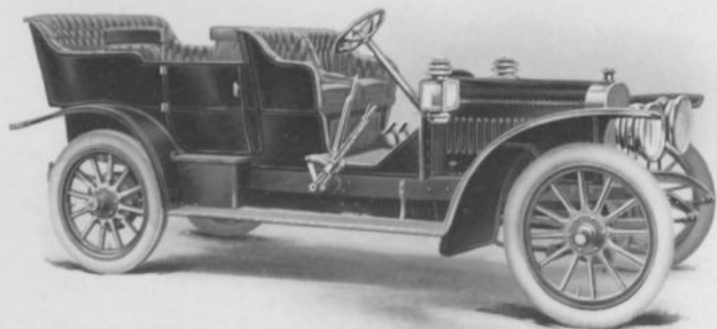
**THE LOZIER
MOTOR CO.**

*Fifty-fifth Street and
Broadway, N. Y.*



PRICE . . . \$5000

With Extension Cape
Top, \$5200



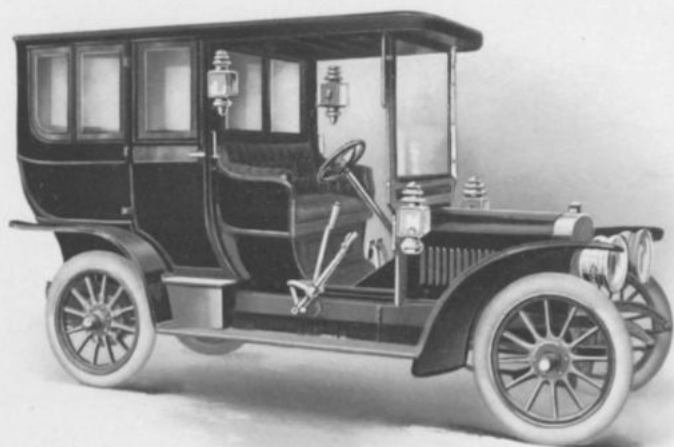
MODEL : H.

Color	Four options.	Cylinders	Four.
Seating Capacity	Seven persons.	Arranged	Vertically.
Clutch	Multiple disc.	How Cast	In pairs.
Wheel Base	124 inches.	Bore	5¼ inches.
Gauge	56 inches.	Stroke	5¼ inches.
Tire Dimensions.		Cooling	Water.
Front	36 x 4 inches.	Radiator	Honeycomb.
Rear	36 x 4½ inches.	Ignition	Jump spark, double system.
Brakes	Four. Type: Contracting and expanding on rear wheels.	Electric Source	Storage battery and high tension magneto.
Horse-power	(A.L.A.M. rating), 45.	Drive	Shaft.
		Transmission	Selective sliding gear.
		Gear Changes	Four forward, one reverse.

Descriptive catalogue will be sent upon application to the above-named company

THE LOZIER
MOTOR CO.
*Fifty-fifth Street and
Broadway, N. Y.*

PRICE . . . \$6000



MODEL : H, LIMOUSINE.

Color	Four options.	Cylinders	Four
Seating Capacity	Seven persons.	Arranged	Vertically.
Clutch	Multiple disc.	How Cast	In pairs.
Wheel Base	124 inches.	Bore	5¼ inches.
Gauge	56 inches.	Stroke	5¼ inches.
Tire Dimensions,		Cooling	Water.
Front	36 x 4 inches.	Radiator	Honeycomb.
Rear	36 x 4½ inches.	Ignition	Jump spark, double system.
Brakes	Four. TYPE: External contracting and internal expanding, on rear wheels.	Electric Source	Storage battery and high tension magneto.
Horse-power	(A.L.A.M. rating), 45.	Drive	Shaft.
		Transmission	Selective sliding gear.
		Gear Changes	Four forward, one reverse.

Descriptive catalogue will be sent upon application to the above-named company

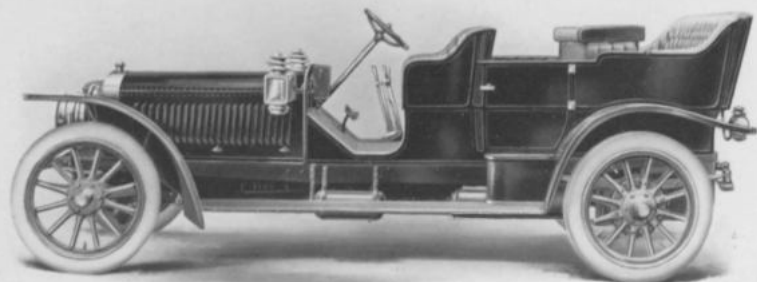
**THE LOZIER
MOTOR CO.**

*Fifty-fifth Street and
Broadway, N. Y.*

PRICE . . \$6000

With Extension Cape
Top, \$6200

Limousine, \$7000



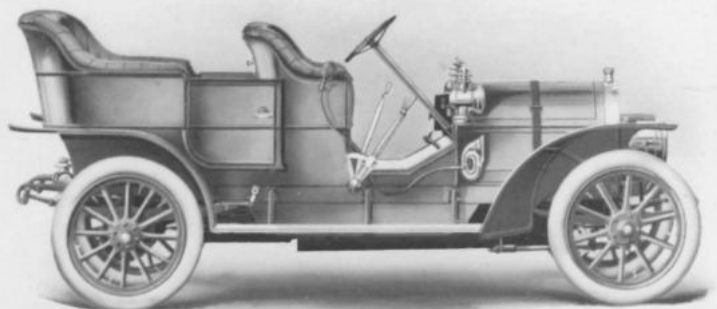
MODEL : I.

Color	Four options.	Cylinders	Six.
Seating Capacity .	Seven persons.	Arranged	Vertically.
Clutch	Multiple disc.	How Cast	In pairs.
Wheel Base	131 inches.	Bore	4½ inches.
Gauge	56 inches.	Stroke	5½ inches.
Tire Dimensions.		Cooling	Water.
Front	36 x 4 inches.	Radiator	Honeycomb.
Rear	36 x 4½ inches.	Ignition	Jump spark, double system.
Brakes	Four. TYPE: External contracting and internal expanding, on rear wheels.	Electric Source .	Storage battery and high tension magneto.
Horse-power	(A.L.A.M. rating), 50.	Drive	Shaft.
		Transmission . .	Selective sliding gear.
		Gear Changes . .	Four forward, one reverse.

Descriptive catalogue will be sent upon application to the above-named company

E. R. THOMAS
DETROIT CO.
Buffalo, N. Y.

PRICE . . . \$2750
With Extension Top
\$2900



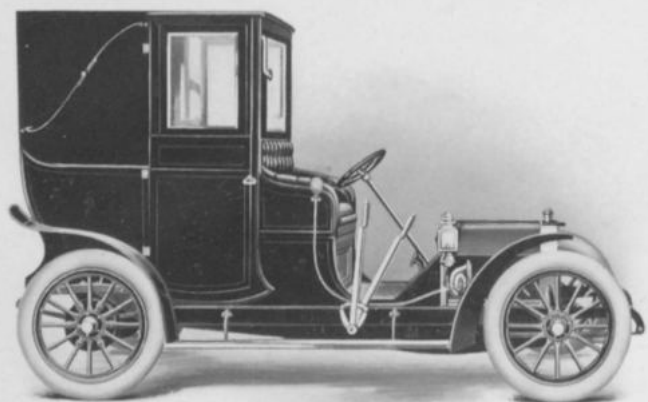
MODEL: 4-40 DETROIT.

Color	Red with other colors on specifications.	Cylinders	Four.
Seating Capacity	Five persons.	Arranged	Vertically, under hood.
Clutch	Expanding cone.	How Cast	In pairs.
Wheel Base	112½ inches.	Bore	5 inches.
Gauge	56 inches.	Stroke	4¼ inches.
Tire Dimensions.		Cooling	Water.
Front	34 x 4 inches.	Radiator	Tubular.
Rear	34 x 4 inches.	Ignition	Jump spark.
Brakes	Three. TYPE: Expanding in rear wheels, contracting on countershaft drum.	Electric Source	Storage and dry batteries.
Horse-power	(A. L. A. M. rating), 40.	Drive	Shaft.
		Transmission	Selective sliding gear.
		Gear Changes	Three forward, one reverse.

Descriptive catalogue will be sent upon application to the above-named company

E. R. THOMAS
 MOTOR CO.
 Buffalo, N. Y.

PRICE . . . \$3000



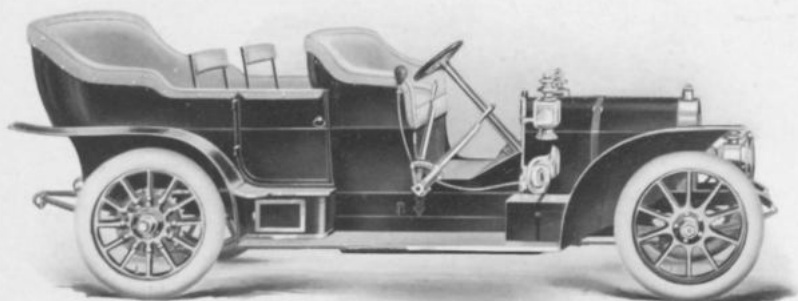
MODEL: THOMAS 4-20 TOWN CAR, LANDAULET.

Color	Optional.	Cylinders	Four.
Seating Capacity	Six persons.	Arranged	Vertically, under hood.
Clutch	Cone.	How Cast	Integral.
Wheel Base	100 inches.	Bore	3 1/4 inches.
Gauge	56 inches.	Stroke	4 5/16 inches.
Tire Dimensions,		Cooling	Water.
Front	32 x 4 inches.	Radiator	Tubular.
Rear	32 x 4 inches.	Ignition	Jump spark.
Brakes	Four. TYPE: Expanding on rear wheels.	Electric Source	High tension magneto.
Horse-power	(A.L.A.M. rating), 16.9.	Drive	Shaft.
		Transmission	Selective sliding gear.
		Gear Changes	Three forward, one reverse.

Descriptive catalogue will be sent upon application to the above-named company

E. R. THOMAS
MOTOR CO.
Buffalo, N. Y.

PRICE . . . \$4500
With Extension Top
\$4700



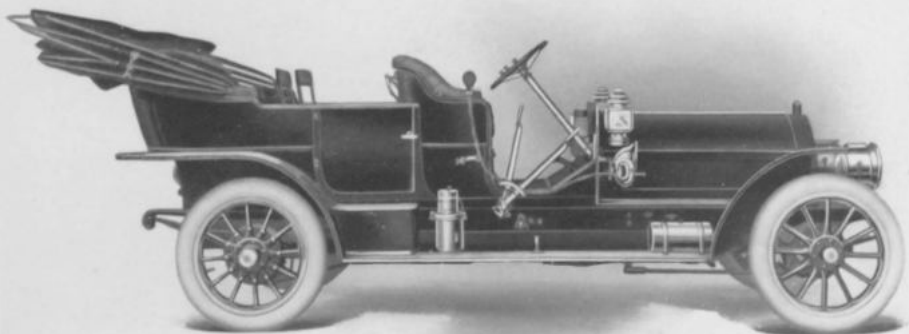
MODEL: F, THOMAS 4-60 TOURING CAR.

Color	Optional.	Cylinders	Four.
Seating Capacity	Seven persons.	Arranged	Vertically, under hood.
Clutch	Disc.	How Cast	Separately.
Wheel Base	127 inches.	Bore	5½ inches.
Gauge	56 inches.	Stroke	5½ inches.
Tire Dimensions,		Cooling	Water.
Front	36 x 4 inches.	Radiator	Cellular.
Rear	36 x 5 inches.	Ignition	Jump spark.
Brakes	Four. TYPE: Contracting on countershaft, expanding on rear wheels.	Electric Source	High tension magneto and spark generator.
Horse-power	(A.L.A.M. rating), 48.	Drive	Double side chain.
		Transmission	Selective sliding gear.
		Gear Changes	Four forward, one reverse.

Descriptive catalogue will be sent upon application to the above-named company.

E. R. THOMAS
MOTOR CO.
Buffalo, N. Y.

PRICE . . \$6000
With Extension Top



MODEL : THOMAS 6-70 TOURING CAR.

Color	Optional.	Cylinders	Six.
Seating Capacity	Seven persons.	Arranged	Vertically, under hood.
Clutch	Disc.	How Cast	Separately.
Wheel Base	136 inches.	Bore	5½ inches.
Gauge	56 inches.	Stroke	5½ inches.
Tire Dimensions.		Cooling	Water.
Front	36 x 4½ inches.	Radiator	Cellular with two fans.
Rear	36 x 5 inches.	Ignition	Jump spark.
Brakes	Four. TYPE: Contracting on countershaft; expanding in rear wheels.	Electric Source	High tension magneto and spark generator.
Horse-power	(A.L.A.M. rating), 72.	Drive	Double side chain.
		Transmission	Selective sliding gear.
		Gear Changes	Four forward, one reverse.

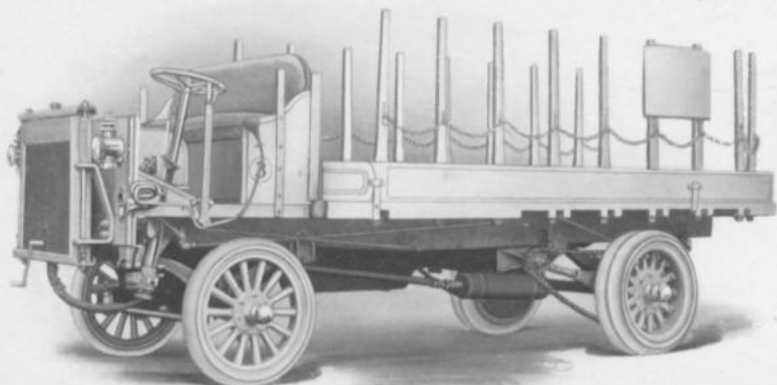
Descriptive catalogue will be sent upon application to the above-named company

HEWITT MOTOR COMPANY

6, 8, 10 East Thirty-first Street, N. Y.

PRICE . . . \$4500
Chassis Only

With Platform Body
and Top over Driver
\$5000



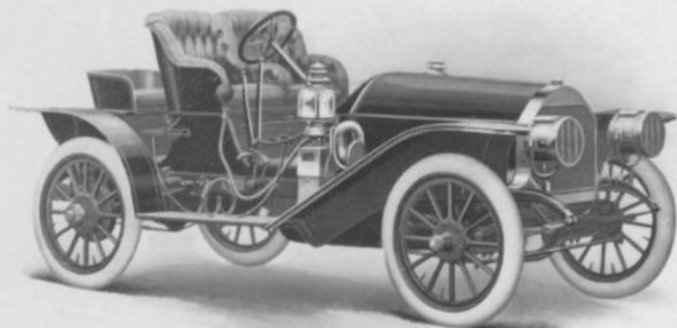
MODEL: FIVE-TON TRUCK.

Color	Optional.	Cylinders	Four.
Carrying Capacity	Five tons.	Arranged	Vertically.
Clutch	Cone.	How Cast	In pairs.
Wheel Base	138 inches.	Bore	4 $\frac{1}{4}$ inches.
Gauge	68 inches.	Stroke	5 $\frac{1}{2}$ inches.
Tire Dimensions,		Cooling	Water.
Front	36 x 5 inches.	Radiator	Cellular, spring suspended.
Rear	36 x 4 inches, dual.	Ignition	Jump spark.
Brakes	Two. TYPE: Expanding on differential and rear wheels.	Electric Source	High tension magneto.
Horse-power	(A.L.A.M. rating), 28.	Drive	Double side chain.
		Transmission	Planetary.
		Gear Changes	Two forward, one reverse.

Descriptive catalogue will be sent upon application to the above-named company

STUDEBAKER
 AUTOMOBILE
 COMPANY
 South Bend, Indiana

PRICE . . . \$3500
 With Buggy Top \$3560



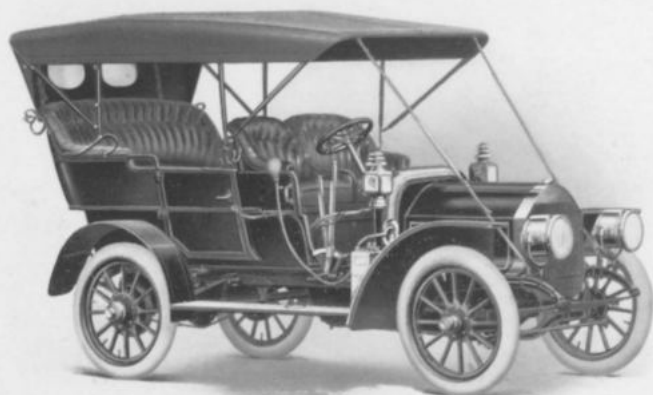
MODEL : H, RUNABOUT.

Color	Red and black, green or blue combination.	Cylinders	Four.
Seating Capacity .	Three persons.	Arranged	Vertically, under hood.
Clutch	Cone, leather faced.	How Cast	In pairs.
Wheel Base	104 inches.	Bore	4½ inches.
Gauge	54 inches.	Stroke	5¾ inches.
Tire Dimensions.		Cooling	Water.
Front	34 x 4 inches.	Radiator	Cellular.
Rear	34 x 4 inches.	Ignition	Make-and-break.
Brakes	Two. TYPE: Expanding and contracting on rear wheels and shaft.	Electric Source .	Low tension magneto.
Horse-power	(A.L.A.M. rating), 27.	Drive	Shaft.
		Transmission . .	Progressive sliding gear.
		Gear Changes . .	Three forward, one reverse.

Descriptive catalogue will be sent upon application to the above-named company

STUDEBAKER
 AUTOMOBILE
 COMPANY
 South Bend, Indiana

PRICE . . . \$3500
 With Cape Top \$3650
 Glass Front, \$60 extra



MODEL: A.

Color	Red and black, green or blue combination.	Cylinders	Four.
Seating Capacity .	Five persons.	Arranged	Vertically, under hood.
Clutch	Cone, leather faced.	How Cast	In pairs.
Wheel Base	104 inches.	Bore	4½ inches.
Gauge	54 inches.	Stroke	5¾ inches.
Tire Dimensions.		Cooling	Water.
Front	34 x 4 inches.	Radiator	Cellular.
Rear	34 x 4 inches.	Ignition	Make-and-break.
Brakes	Two. TYPE: Expanding and contracting on rear wheels and shaft.	Electric Source .	Low tension magneto.
Horse-power . . .	(A.L.A.M. rating), 27.	Drive	Shaft.
		Transmission . .	Progressive sliding gear.
		Gear Changes . .	Three forward, one reverse.

Descriptive catalogue will be sent upon application to the above-named company

**STUDEBAKER
AUTOMOBILE
COMPANY**
South Bend, Indiana

PRICE . . . \$4000
With Cape Top \$4150
Glass Front, \$60 extra



MODEL: B.

Color	Red and black, green or blue combination.	Cylinders	Four.
Seating Capacity .	Seven persons.	Arranged	Vertically, under hood.
Clutch	Cone, leather faced.	How Cast	In pairs.
Wheel Base	114 inches.	Bore	4 $\frac{1}{4}$ inches.
Gauge	54 inches.	Stroke	5 $\frac{1}{2}$ inches.
Tire Dimensions,		Cooling	Water.
Front	34 x 4 $\frac{1}{2}$ inches.	Radiator	Cellular.
Rear	34 x 4 $\frac{1}{2}$ inches.	Ignition	Make-and-break.
Brakes	Two. TYPE: Expanding and contracting on rear wheels.	Electric Source .	Low tension magneto.
Horse-power	(A.L.A.M. rating), 36.	Drive	Shaft.
		Transmission . .	Selective sliding gear.
		Gear Changes . .	Four forward, one reverse.

Descriptive catalogue will be sent upon application to the above-named company

STUDEBAKER
AUTOMOBILE
COMPANY
South Bend, Indiana

PRICE . . . \$4200



MODEL : H, LIMOUSINE.

Color Blue, dark blue, dark green or dark maroon.

Seating Capacity . . . Seven persons.

Clutch Cone, leather faced.

Wheel Base 104 inches.

Gauge 54 inches.

Tire Dimensions,

Front 34 x 4 inches.

Rear 34 x 4½ inches.

Brakes Two. TYPE : Expanding and contracting on rear wheels and shaft.

Horse-power . . . (A.L.A.M. rating), 27.

Cylinders Four.

Arranged Vertically, under hood.

How Cast In pairs.

Bore 4¼ inches.

Stroke 5¼ inches.

Cooling Water.

Radiator Cellular.

Ignition Make-and-break.

Electric Source . . . Magneto.

Drive Shaft.

Transmission . . . Progressive sliding gear.

Gear Changes . . . Three forward, one reverse.

Descriptive catalogue will be sent upon application to the above-named company

WALTHAM
MANUFACTURING CO.
Waltham, Mass.

PRICE . . . \$1450
With Paneled Wood
Top



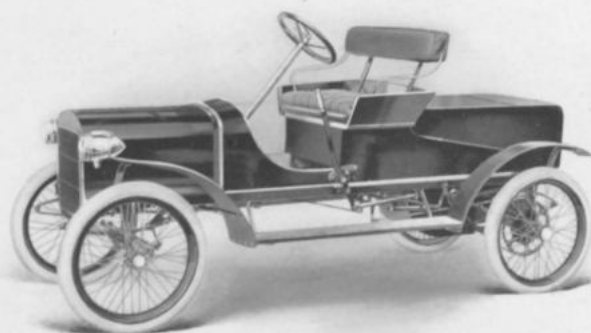
MODEL: 178 C, PARCEL CAR.

Color	Optional.	Cylinders	Two.
Carrying Capacity	1000 pounds.	Arranged	Opposed.
Wheel Base	92 inches.	How Cast	Separately.
Gauge	56 inches.	Bore	4½ inches.
Tire Dimensions,		Stroke	4 inches.
Front	30 x 3 inches.	Cooling	Water.
Rear	30 x 3 inches.	Radiator	Thermo-syphon.
Brakes	Two. TYPE: Expanding on rear wheels; also friction reverse.	Ignition	Jump spark.
Horse-power	(A.L.A.M. rating), 14.	Electric Source	Dry batteries.
		Drive	Double side chain.
		Transmission	Friction.
		Gear Changes	Five forward, one reverse.

Descriptive catalogue will be sent upon application to the above-named company

WALTHAM
MANUFACTURING CO.
Waltham, Mass.

PRICE . . . \$600
With Mackintosh
Buggy Top \$625



MODEL: 28, RUNABOUT.

Color Bright carmine.

Seating Capacity . Two persons.

Wheel Base 84 inches.

Gauge 42 inches.

Tire Dimensions,

Front 26 x 2½ inches.

Rear 26 x 2½ inches.

Brakes Two. Type: Expanding on rear wheels; also friction reverse.

Horse-power . . . (A.L.A.M. rating), 8.

Cylinders Two.

Arranged 50 degrees offset.

How Cast Separately.

Bore 3¼ inches.

Stroke 4 inches.

Cooling Air.

Ignition Jump spark.

Electric Source . Storage and dry batteries.

Drive Double side chain.

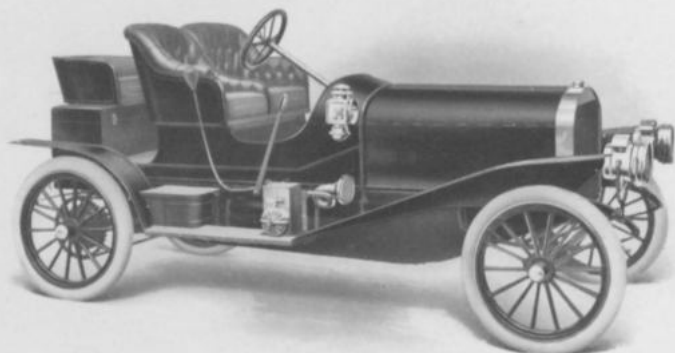
Transmission . . . Friction.

Gear Changes . . . Five forward, one reverse.

Descriptive catalogue will be sent upon application to the above-named company

WALTHAM
MANUFACTURING CO.
Waltham, Mass.

PRICE . . . \$1350
With Folding Top
\$1425



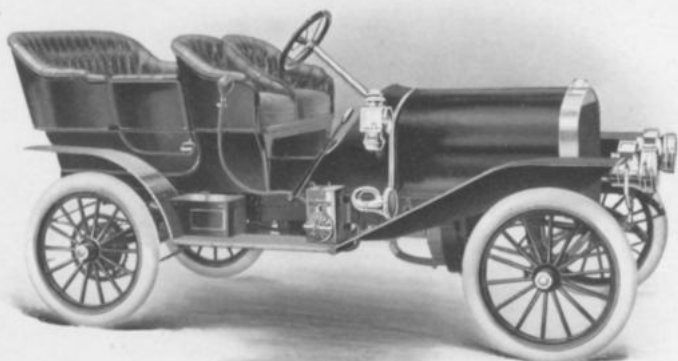
MODEL: 138, ROADSTER.

Color	English vermilion, black trimmings. Option French grey.	Cylinders	Two.
Seating Capacity	Two persons.	Arranged	Opposed.
Wheel Base	102 inches.	How Cast	Separately.
Gauge	56 inches.	Bore	4 $\frac{1}{8}$ inches.
Tire Dimensions.		Stroke	4 inches.
Front	30 x 3 inches.	Cooling	Water.
Rear	30 x 3 inches.	Radiator	Thermo-syphon.
Brakes	Two. TYPE: Expanding on rear wheels; also friction reverse.	Ignition	Jump spark.
Horse-power	(A.L.A.M. rating), 14.	Electric Source	Dry batteries.
		Drive	Double side chain.
		Transmission	Friction.
		Gear Changes	Five forward, one reverse.

Descriptive catalogue will be sent upon application to the above-named company

WALTHAM
MANUFACTURING CO.
Waltham, Mass.

PRICE . . . \$1400
With Cape Top \$1500



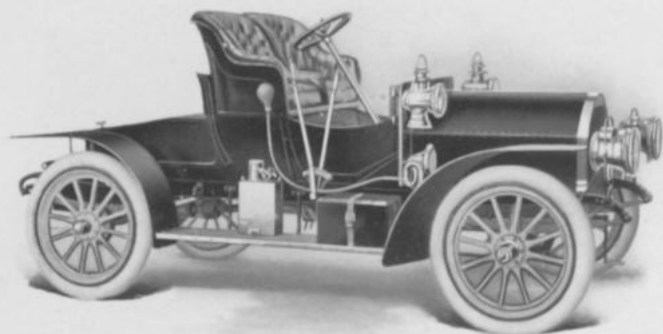
MODEL: 158, FAMILY TOURING.

Color	Brewster green, carmine running gear.	Cylinders	Two.
Seating Capacity	Four persons.	Arranged	Opposed.
Wheel Base	92 inches.	How Cast	Separately.
Gauge	56 inches.	Bore	4 $\frac{3}{8}$ inches.
Tire Dimensions.		Stroke	4 inches.
Front	30 x 3 inches.	Cooling	Water.
Rear	30 x 3 inches.	Radiator	Thermo-syphon.
Brakes	Two. TYPE: Expanding on rear wheels; also friction reverse.	Ignition	Jump spark.
Horse-power	(A.L.A.M. rating), 14.	Electric Source	Dry batteries.
		Drive	Double side chain.
		Transmission	Friction.
		Gear Changes	Five forward, one reverse.

Descriptive catalogue will be sent upon application to the above-named company

WALTHAM
MANUFACTURING CO.
Waltham, Mass.

PRICE . . . \$1750
With Pantasote Bug-
gy Top \$1850



MODEL: D. L. R., RUNABOUT.

Color	Brewster green, carmine striping; running gear, cream white; frame, black. Option carmine running gear.	Cylinders	Four.
Seating Capacity .	Two persons.	Arranged	Vertically.
Clutch	Cone, leather faced.	How Cast	Separately.
Wheel Base	96 inches.	Bore	4 inches.
Gauge	56 inches.	Stroke	4 1/4 inches.
Tire Dimensions,		Cooling	Air.
Front	32 x 3 3/4 inches.	Ignition	Jump spark.
Rear	32 x 3 3/4 inches.	Electric Source .	Storage and dry bat- teries.
Brakes	Two. TYFR: External on rear wheels and transmission.	Drive	Shaft.
Horse-power	(A. L. A. M. rating), 20.	Transmission . .	Progressive sliding gear.
		Gear Changes . .	Three forward, one re- verse.

Descriptive catalogue will be sent upon application to the above-named company

**BUICK MOTOR
COMPANY**
Flint, Michigan

PRICE . . . \$850
With Extension Top
\$900
Detachable Rumble
\$50 Extra



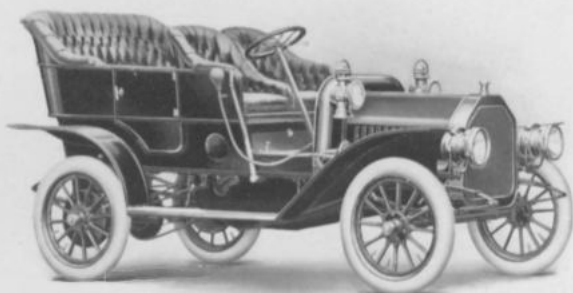
MODEL : 10.

Color	French grey.	Cylinders	Four.
Seating Capacity	Three persons.	Arranged	Vertically, under hood.
Clutch	Cone.	How Cast	In pairs.
Wheel Base	88 inches.	Bore	3¼ inches.
Gauge	56 inches.	Stroke	3¼ inches.
Tire Dimensions.		Cooling	Water.
Front	30 x 3 inches.	Radiator	Tubular.
Rear	30 x 3 inches.	Ignition	Jump spark.
Brakes	Two. TYPE: Hub, internal expanding; external contracting on shaft.	Electric Source	Storage battery.
Horse-power	18.	Drive	Shaft.
		Transmission	Planetary.
		Gear Changes	Two forward, one reverse.

Descriptive catalogue will be sent upon application to the above-named company

**BUICK MOTOR
COMPANY**
Flint, Michigan

PRICE . . . \$1250
With Extension Top
\$1350



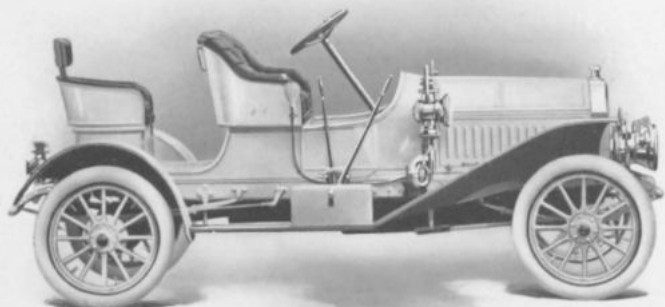
MODEL : F.

Color	Deep wine.	Cylinders	Two.
Seating Capacity	Five persons.	Arranged	Horizontally, under body.
Clutch	Cone.	How Cast	Separately.
Wheel Base	90 inches.	Bore	4½ inches.
Gauge	56 inches.	Stroke	5 inches.
Tire Dimensions.		Cooling	Water.
Front	30 x 4 inches.	Radiator	Tubular.
Rear	30 x 4 inches.	Ignition	Jump spark.
Brakes	Two. Type: Expanding on rear wheels.	Electric Source	Storage and dry batteries.
Horse-power	22.	Drive	Chain.
		Transmission	Planetary.
		Gear Changes	Two forward, one reverse.

Descriptive catalogue will be sent upon application to the above-named company

BUICK MOTOR
COMPANY
Flint, Michigan

PRICE . . . \$2000
With Extension Top
\$2080
Double Rumble Seat
\$50 Extra



MODEL : S.

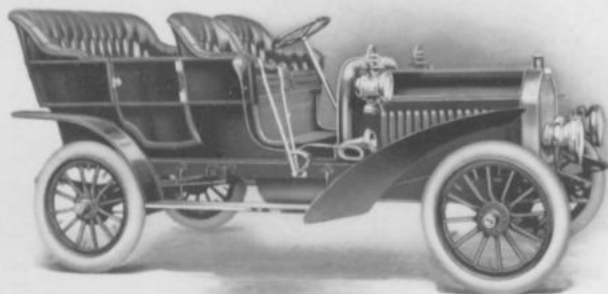
Color	French grey.	Cylinders	Four.
Seating Capacity	Three or four persons.	Arranged	Vertically, under hood.
Clutch	Multiple disc.	How Cast	Separately.
Wheel Base	106 inches.	Bore	4¼ inches.
Gauge	56 inches.	Stroke	4½ inches.
Tire Dimensions.		Cooling	Water.
Front	32 x 4 inches.	Radiator	Tubular.
Rear	32 x 4 inches.	Ignition	Jump spark.
Brakes	Two. TYPE: Contracting on driving shaft and internal expanding on rear wheels.	Electric Source	Storage battery.
Horse-power	24.	Drive	Shaft.
		Transmission	Sliding gear.
		Gear Changes	Three forward, one reverse.

Descriptive catalogue will be sent upon application to the above-named company

**BUICK MOTOR
COMPANY**
Flint, Michigan

PRICE . . . \$2000

With Extension Top
\$2125



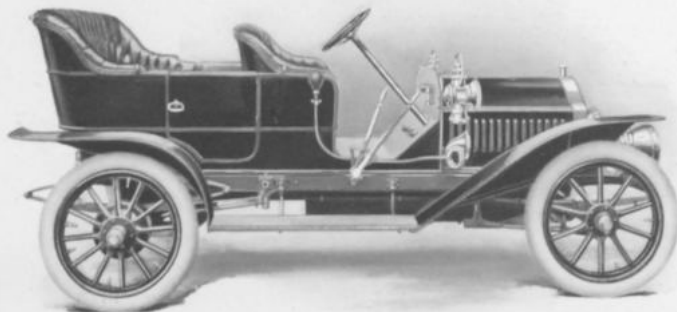
MODEL : D.

Color	Royal blue or red.	Cylinders	Four.
Seating Capacity	Five persons.	Arranged	Vertically, under hood.
Clutch	Multiple disc.	How Cast	Separately.
Wheel Base	102½ inches.	Bore	4¼ inches.
Gauge	56 inches.	Stroke	4½ inches.
Tire Dimensions.		Cooling	Water.
Front	32 x 4 inches.	Radiator	Tubular.
Rear	32 x 4 inches.	Ignition	Jump spark.
Brakes	Three. TYPE: Contracting on driving shaft and expanding on rear wheels.	Electric Source	Storage batteries.
Horse-power	24.	Drive	Shaft.
		Transmission	Sliding gear.
		Gear Changes	Three forward, one reverse.

Descriptive catalogue will be sent upon application to the above-named company

BUICK MOTOR
COMPANY
Flint, Michigan

PRICE . . . \$2500
With Extension Top



MODEL : 5.

Color Red.

Seating Capacity . Five persons.

Clutch Cone, leather faced.

Wheel Base 108 inches.

Gauge 56 inches.

Tire Dimensions,

Front 34 x 4 inches.

Rear 34 x 4 inches.

Brakes Two. TYPE: Expanding and contracting on driving shaft and rearwheels.

Horse-power . . . 40.

Cylinders Four.

Arranged Vertically, under hood.

How Cast In pairs.

Bore 4½ inches.

Stroke 5 inches.

Cooling Water.

Radiator Tubular.

Ignition Jump spark.

Electric Source . Magneto and storage battery.

Drive Shaft.

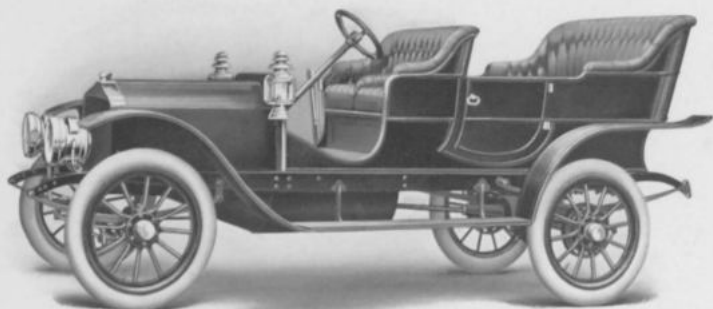
Transmission . . . Selective sliding gear.

Gear Changes . . . Three forward, one reverse.

Descriptive catalogue will be sent upon application to the above-named company

SELDEN MOTOR VEHICLE COMPANY
Rochester, N. Y.

PRICE . . . \$2000
 With Cape Top \$2150



MODEL : 25.

Color	Optional.	Cylinders	Four.
Seating Capacity	Five persons.	Arranged	Vertically.
Clutch	Cone.	How Cast	In pairs.
Wheel Base	109 inches.	Bore	4½ inches.
Gauge	56 inches.	Stroke	5½ inches.
Tire Dimensions,		Cooling	Water.
Front	32 x 3½ inches.	Radiator	Tubular.
Rear	32 x 3½ inches.	Ignition	Jump spark.
Brakes	Two. TYPE: Internal expanding on rear wheels and on transmission.	Electric Source	Dry batteries.
Horse-power	(A.L.A.M. rating), 28.	Drive	Shaft.
		Transmission	Selective sliding gear.
		Gear Changes	Three forward, one reverse.

Descriptive catalogue will be sent upon application to the above-named company

IMPORTED AUTOMOBILES

Owing to the custom of foreign makers of cars, which is not to expose new models until after the Paris Salon, it was not possible to obtain details of the latest models in time to embody in this Hand Book. Such details may be obtained from the Importers of such cars at the addresses given below :

LICENSED IMPORTERS

<p>Auto Import Co. 1786 Broadway, N. Y.</p>	<p>FLORENZIA LOCOMOTRICE MARTINI ROCHET-SCHNEIDER</p>
<p>Sidney B. Bowman Automobile Co. 225 West 49th Street, N. Y.</p>	<p>CLEMENT - BAYARD CLEMENT - TALBOT</p>
<p>Darracq Motor Car Co. 1989 Broadway, N. Y.</p>	<p>DARRACO</p>
<p>De Dietrich Import Co. 3 West 44th Street, N. Y.</p>	<p>De DIETRICH</p>
<p>The Hol - Tan Co. Broadway and 56th Street, N. Y.</p>	<p>FIAT ISOTTA - FRASCHINI ITALA</p>
<p>Walter C. Martin Trading as Rolls-Royce Import Co. 62d Street and Broadway, N. Y.</p>	<p>ROLLS - ROYCE</p>
<p>Wyckoff, Church & Partridge Broadway and 56th Street, N. Y.</p>	<p>C. G. V.</p>

The New York Transportation Co., Eighth Avenue and 49th Street, New York, who are operating gasoline omnibuses and gasoline cabs and other vehicles for hire, are licensed to import and use foreign made automobiles.

CATALOGUE REQUEST BLANK

.....1908

.....
.....
GENTLEMEN :—Please send me catalogue describing your automobiles shown in the **HAND BOOK OF GASOLINE AUTOMOBILES**, published by the Association of Licensed Automobile Manufacturers, and oblige,

Name

Street..... City.....

CATALOGUE REQUEST BLANK

.....1908

.....
.....
GENTLEMEN :—Please send me catalogue describing your automobiles shown in the **HAND BOOK OF GASOLINE AUTOMOBILES**, published by the Association of Licensed Automobile Manufacturers, and oblige,

Name

Street..... City.....

CATALOGUE REQUEST BLANK

.....1908

.....
.....
GENTLEMEN :—Please send me catalogue describing your automobiles shown in the **HAND BOOK OF GASOLINE AUTOMOBILES**, published by the Association of Licensed Automobile Manufacturers, and oblige,

Name

Street..... City.....

