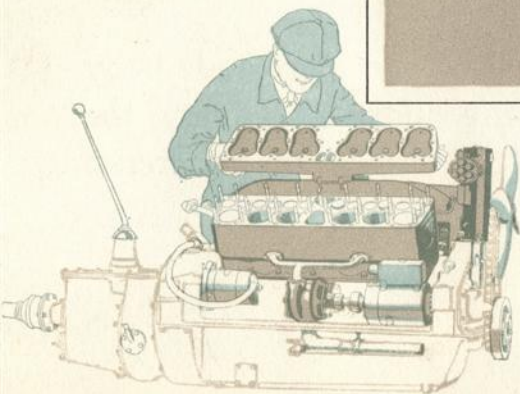
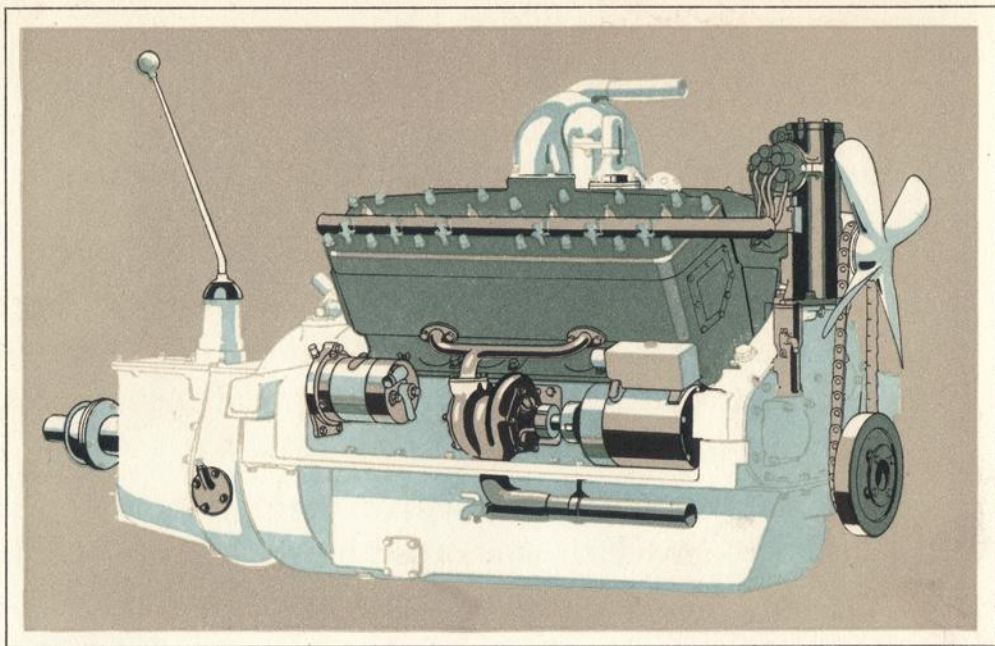


The
HEART
of the
PACKARD

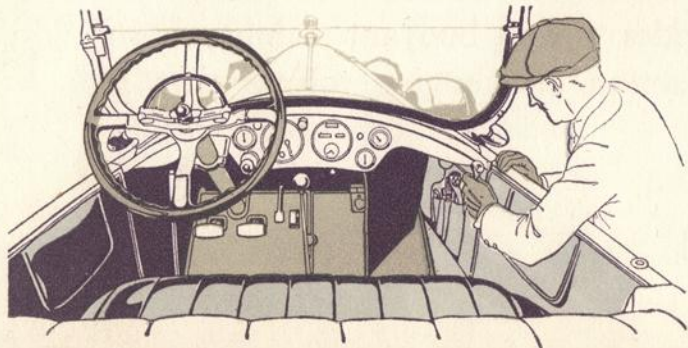
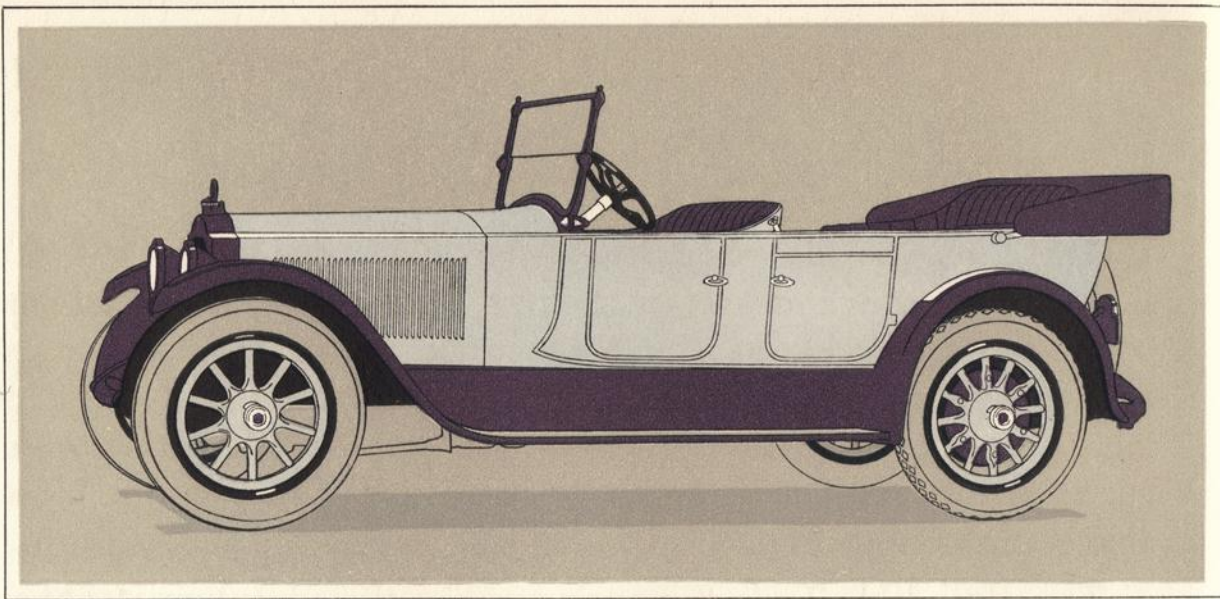
3-25
and
3-35



Cylinder heads are removable. In manufacturing, this feature admits of perfect machining, which in turn insures uniform compression. An improved channeling of the gas passages provides even more efficient distribution of the fuel to the combustion chambers.

The
3-25
STANDARD
TOURING

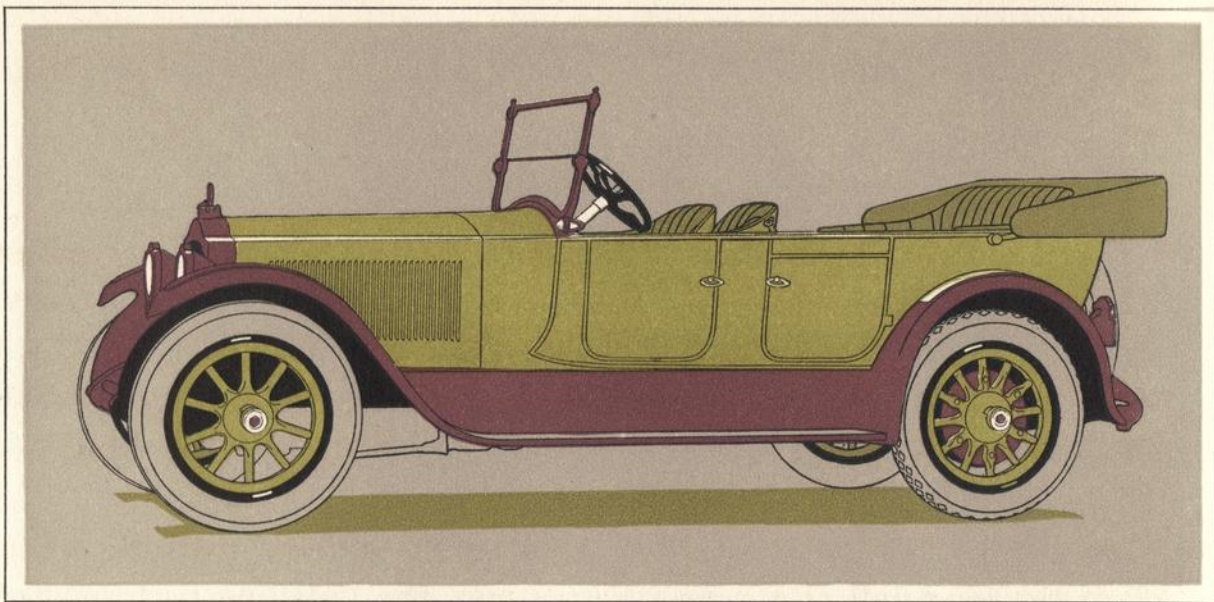
*Seven
Passengers*



Controls and gauges are grouped with definite relation to the driver's convenience. All dials are plainly lettered and fall in the direct line of vision. Your hand reaches straight to the switches on the cowl board and your eyes keep to the road ahead.

The
3-25
SALON
TOURING

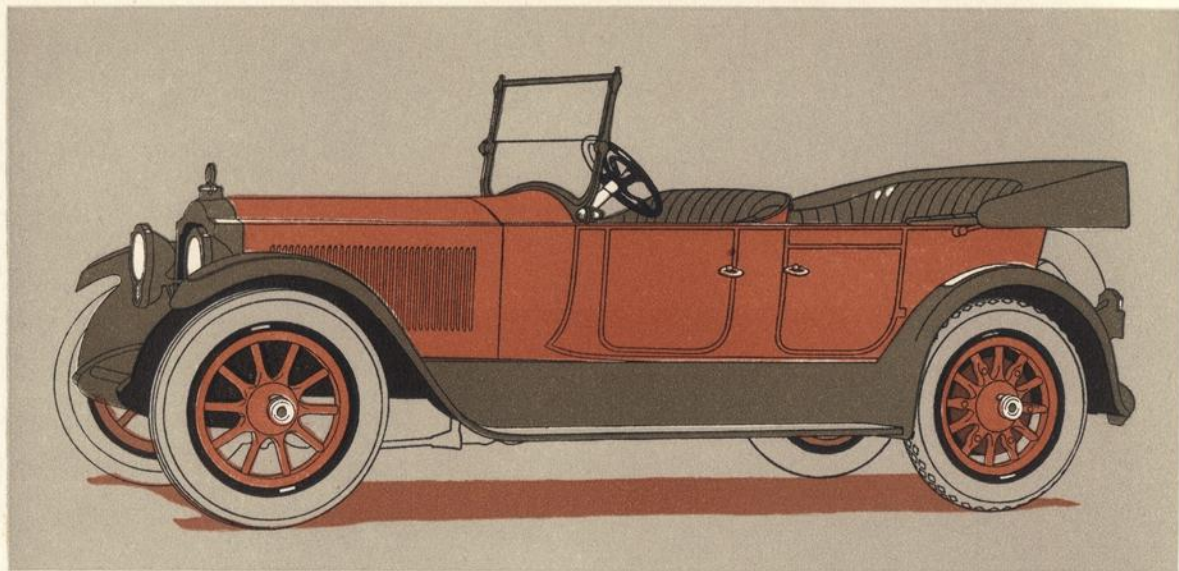
Seven
Passengers



Umbrellas and walking sticks may be carried conveniently in a Packard touring car. On the opposite side is a special compartment for carrying the door curtain standards.

The
3-25
PHAETON

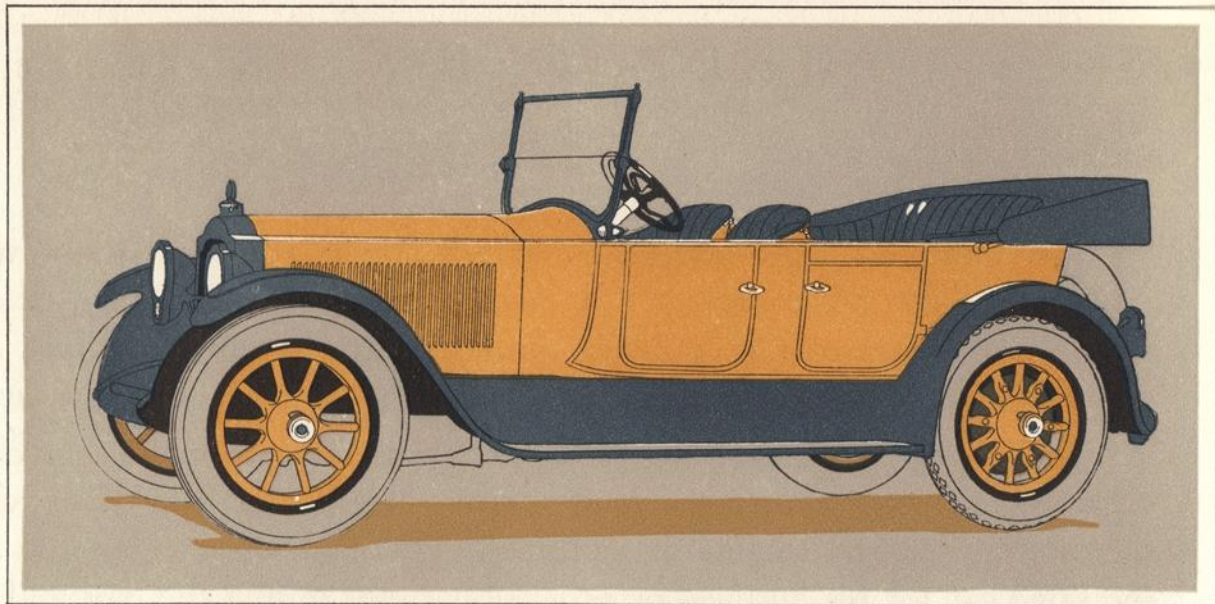
Five
Passengers



In the phaeton, the back of the front seat contains two compartments with doors that hinge about half way and swing from the top, and a center compartment that may be securely locked. They are just right for the things a small party wants to take along on a short trip.

The
3-25
SALON
PHAETON

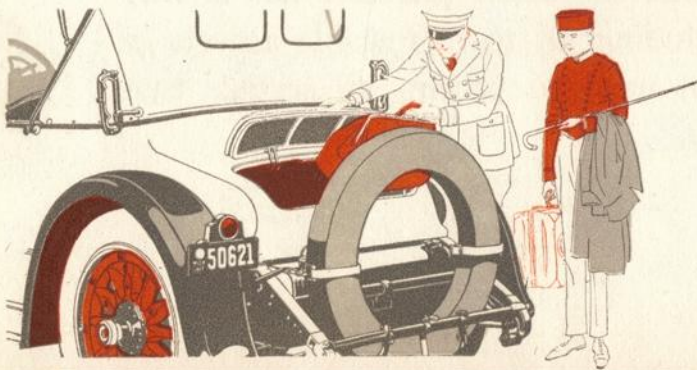
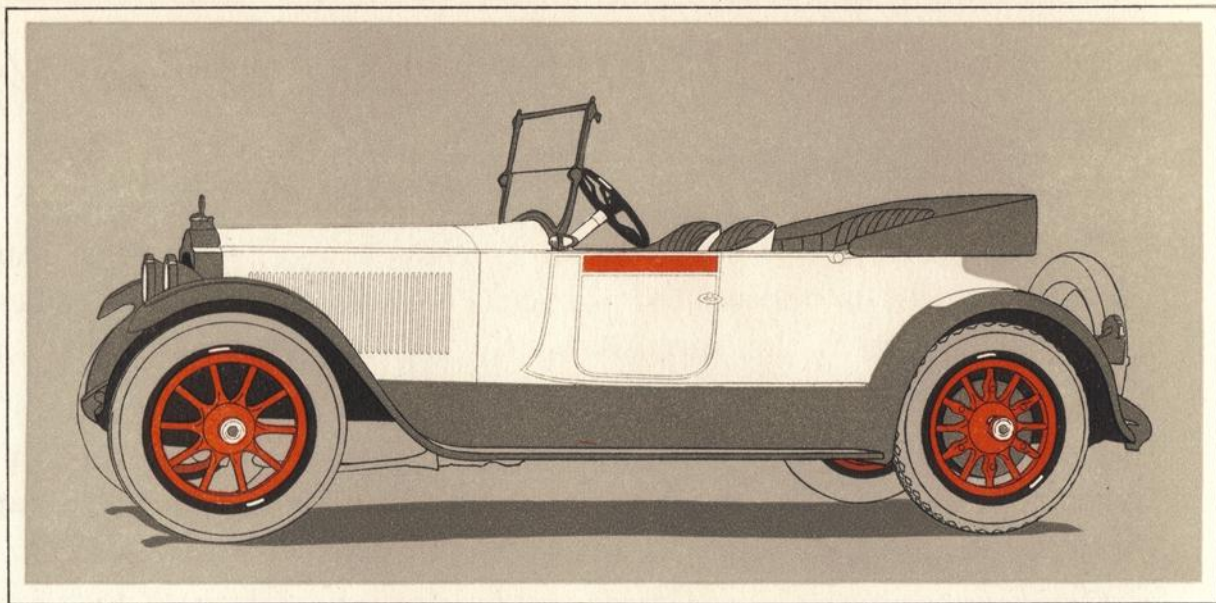
Five
Passengers



Metal door standards hold the curtains in upright position and allow the curtain to swing open with the door. The outside handles are a great convenience in stormy weather.

The
3-25
RUNABOUT

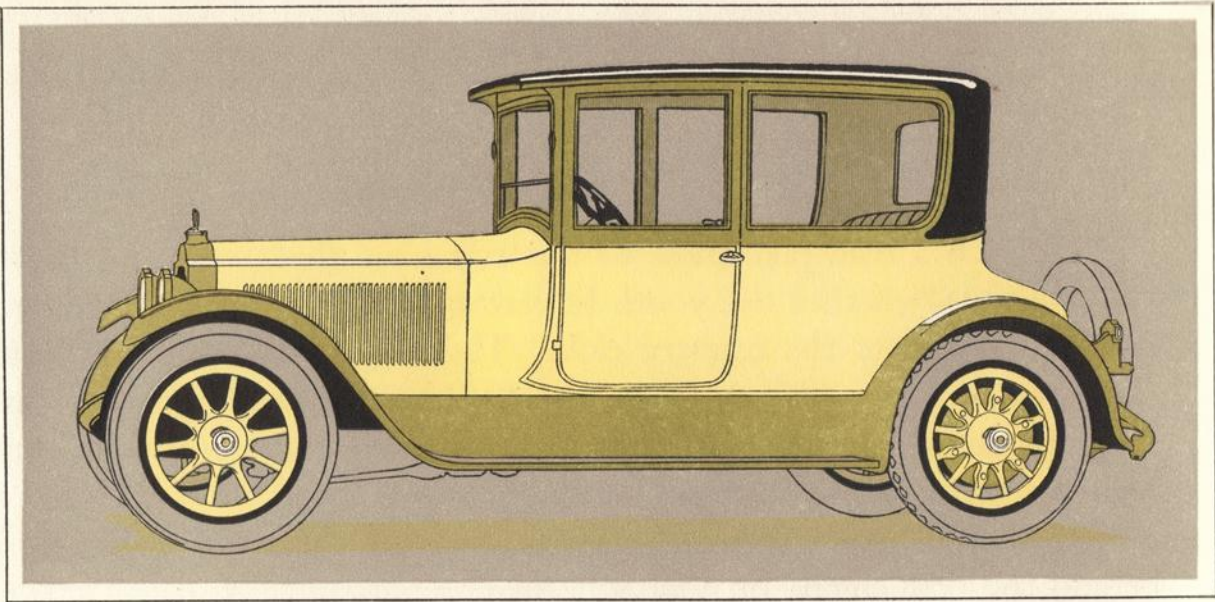
Four
Passengers



The compartment for bags and parcels is large enough to accommodate everything the casual tourist needs to carry, and is fitted with a Yale lock. The new type tire carrier sets off the lines of the car with just the right touch of style.

The
3-25
COUPE

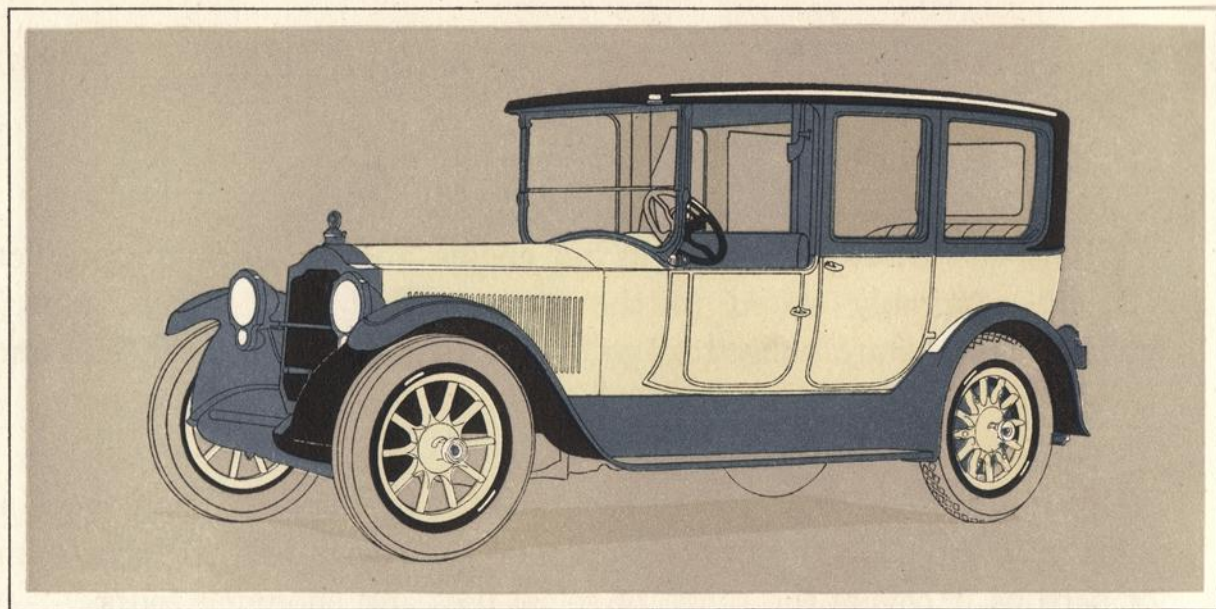
Four
Passengers



The driver's seat in the coupe is leather covered, as this seat must naturally stand greater wear than any other. Other upholstery may be selected from a fine line of woolen weaves.

The
3-25
LIMOUSINE

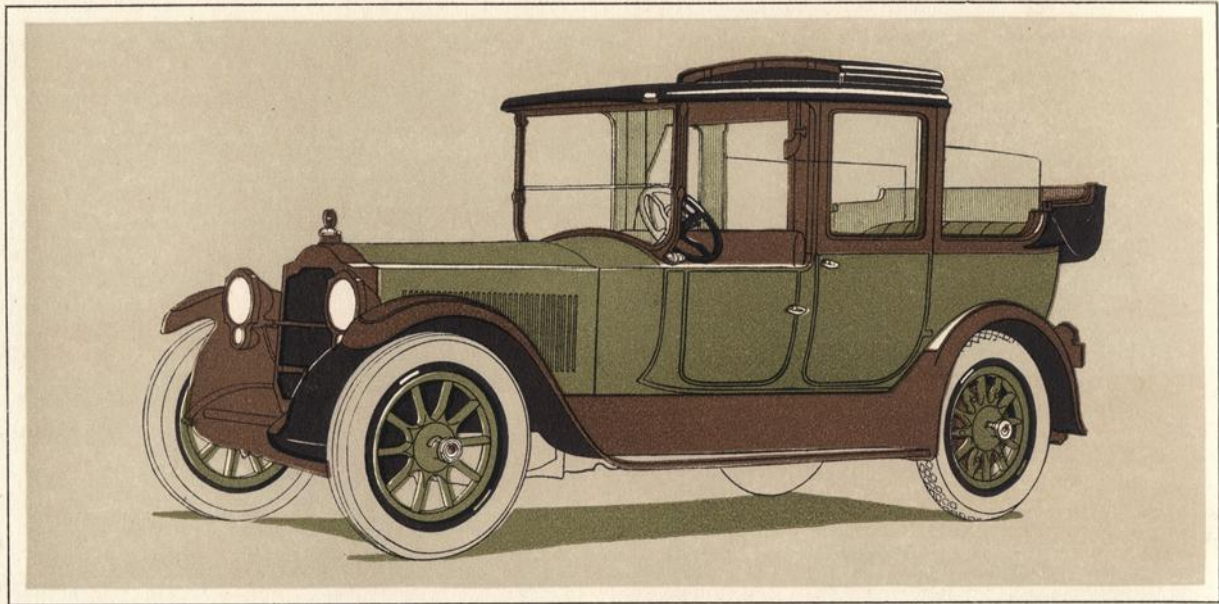
Seven
Passengers



A detail indicative of the care as well as the taste with which Packard appointments are arranged is that the articles in the vanity cases are individually encased. The boxes are equipped with hinged covers to keep out dust.

The
3-25
LANDAULET

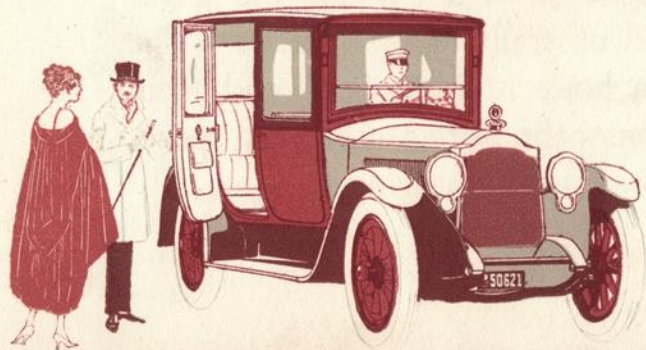
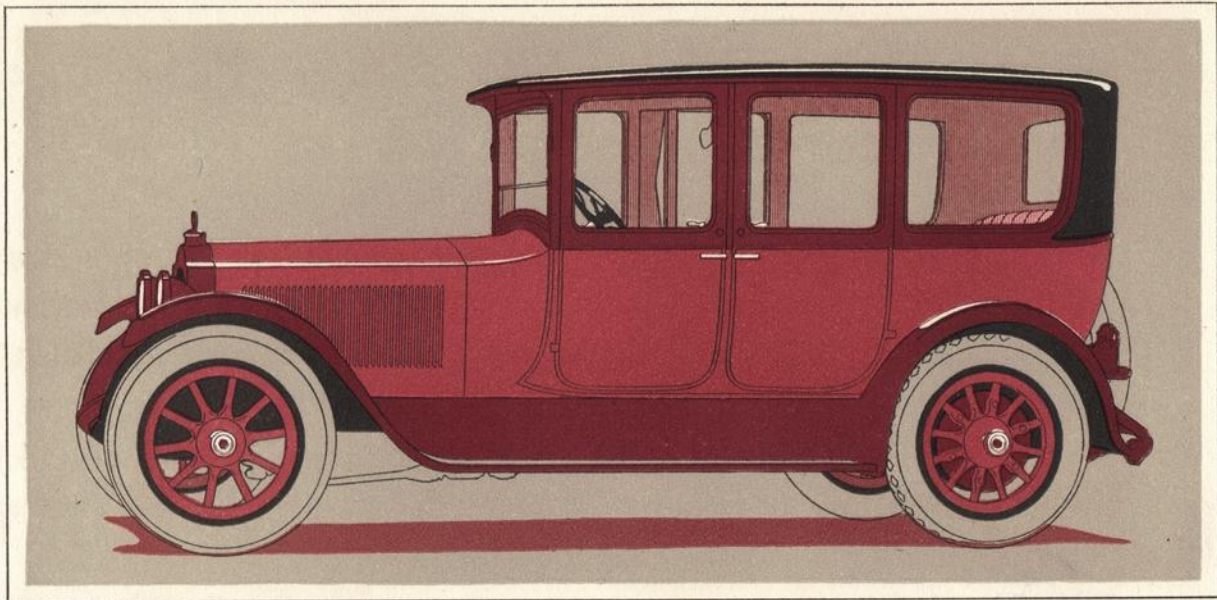
Seven
Passengers



The interior fittings of the landulet include arm rests, vanity cases, dictaphone, capacious door pockets and forward-folding, disappearing auxiliary seats. The window regulators are trim in appearance and convenient in operation.

The
3-25
IMPERIAL
LIMOUSINE

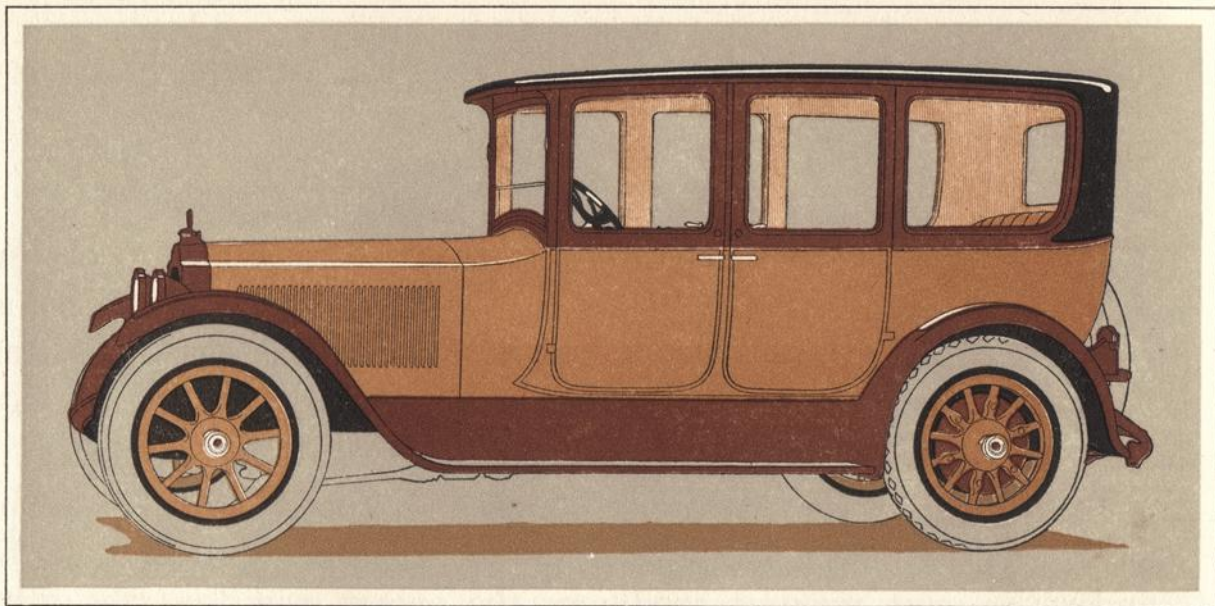
Seven
Passengers



The graceful fuselage lines that characterize the open cars lend themselves admirably to the contour of this enclosed car de luxe. The side-lights, for use when the car is standing at the curb, are imbedded in the front pillars.

The
3-25
BROUGHAM

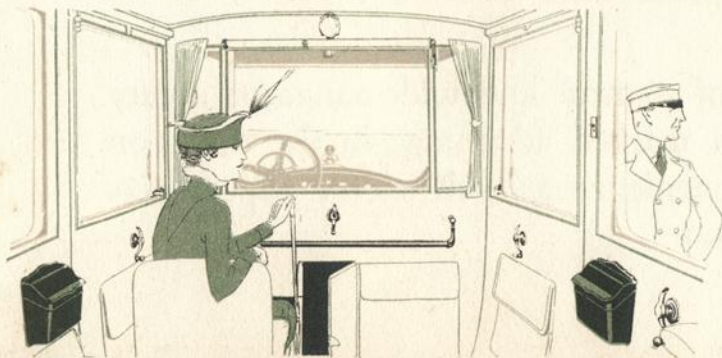
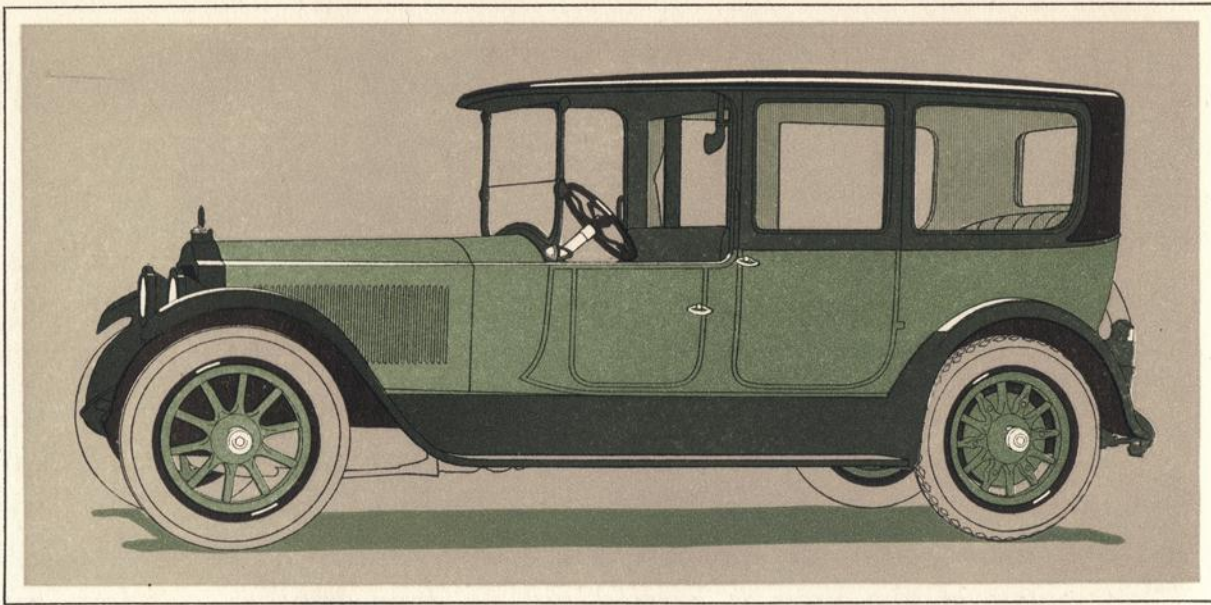
Seven
Passengers



The seating plan of the brougham brings the owner-driver in touch with his guests. The auxiliary seats fold into the backs of the front seats when not in use.

The
3-35
LIMOUSINE

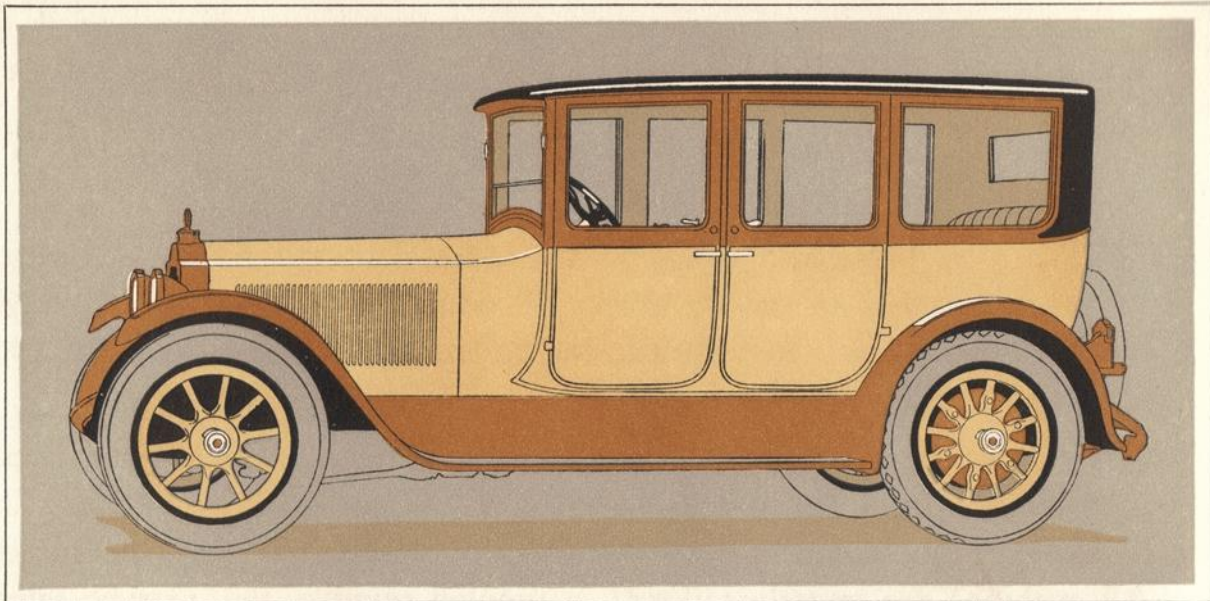
Seven
Passengers



The auxiliary seats, folded, fit neatly into the back of the front seat; in position for use, they are in harmony with the beauty of the interior, ample and comfortable. Between them is a parcel compartment that may be locked.

The
3-25
BROUGHAM

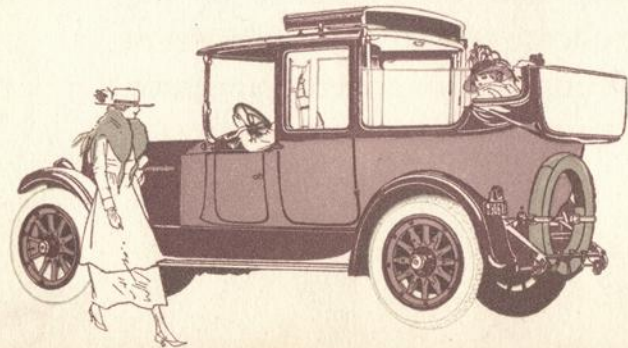
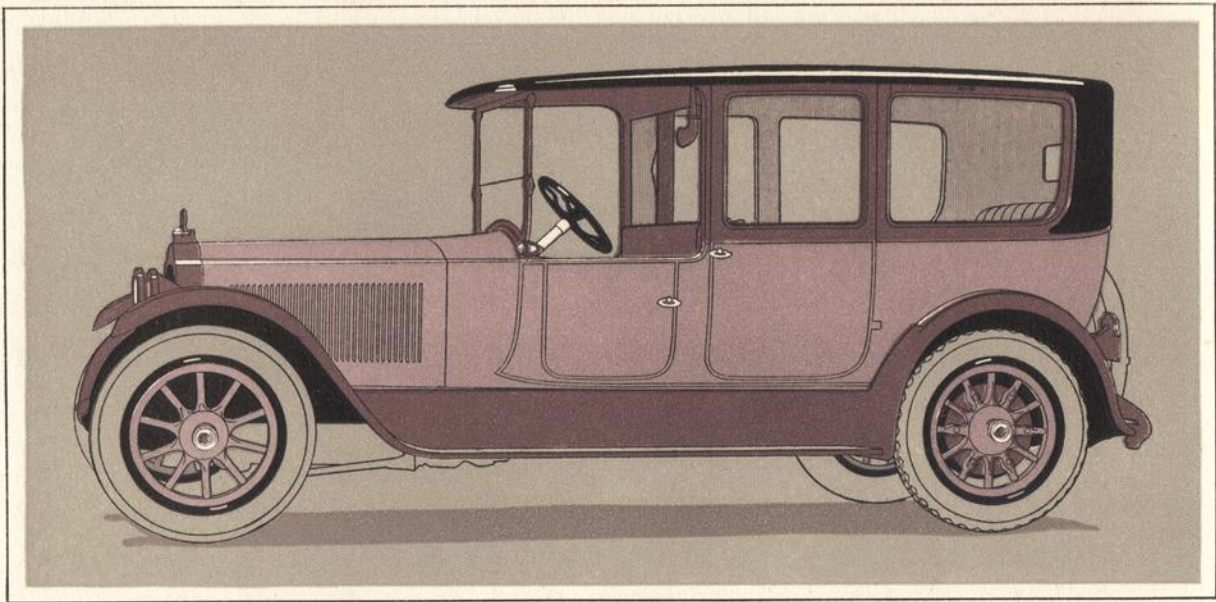
Six
Passengers



A detail of the six-passenger brougham, and of other enclosed types in the Twin Six line, is the arm rest, which serves the comfort of the passenger and also, when occasion requires, affords more than usual roominess.

The
3-35
LANDAULET

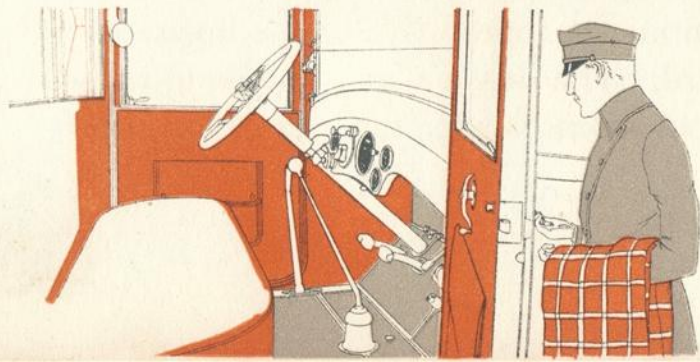
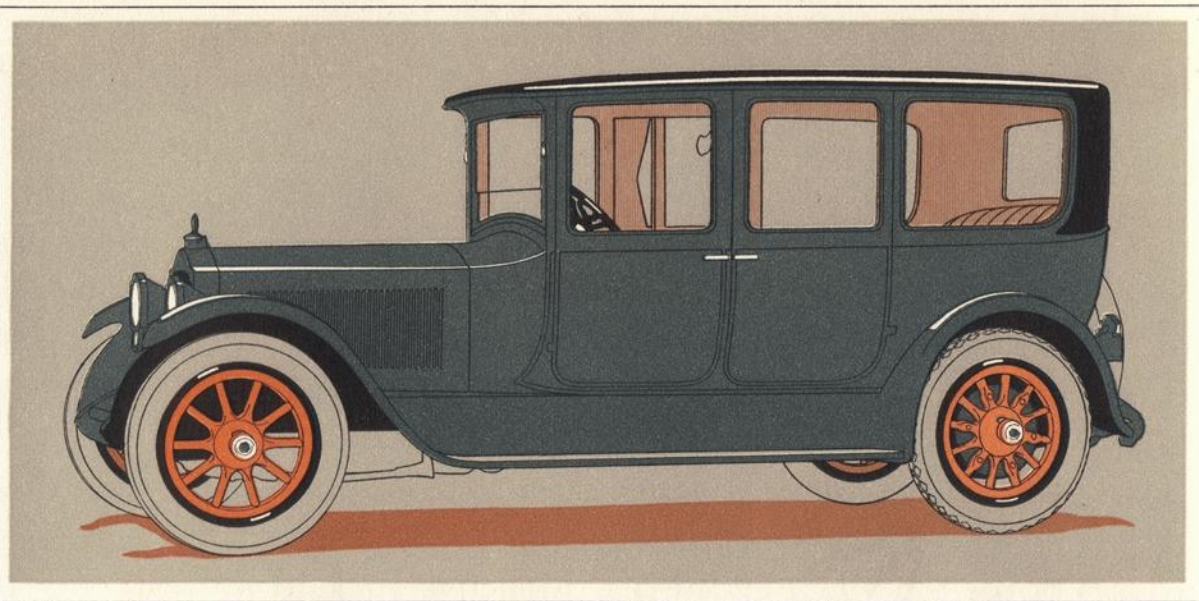
Seven
Passengers



Folding seats of the forward disappearing type, a center luggage compartment, window lowering device and robe rail are among the details of convenience in the interior arrangement of the landaulet.

The
3-35
IMPERIAL
LIMOUSINE

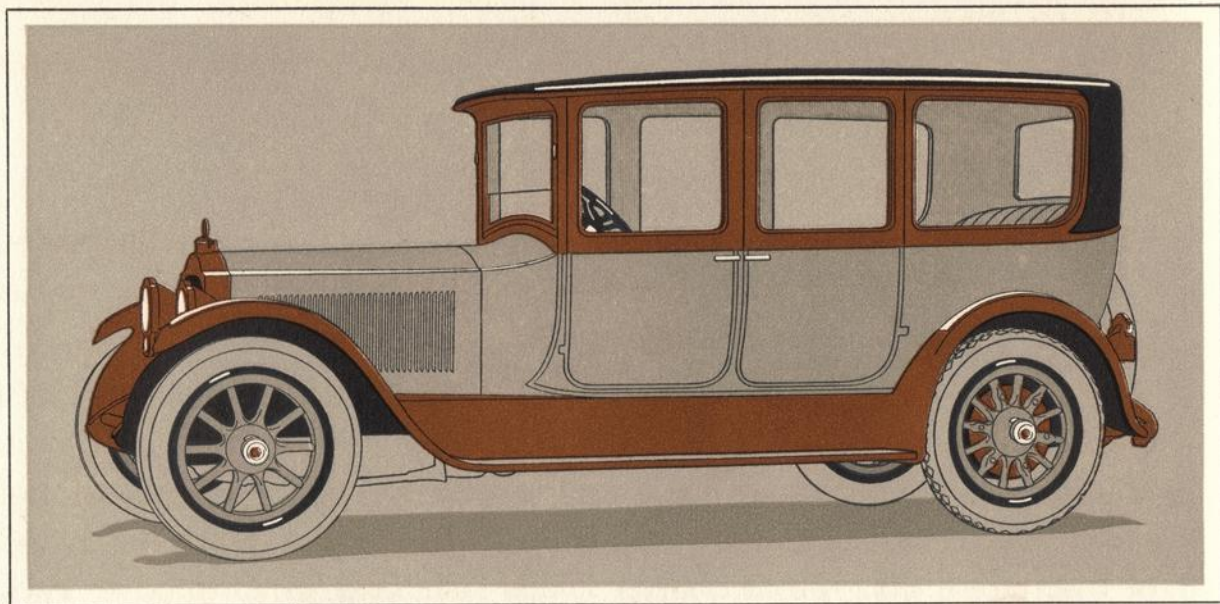
Seven
Passengers



The new Packard lines, from the higher, narrower radiator front to the extra tire at the rear, appear in their most impressive proportions in the Imperial Limousine.

The
3-35
BROUGHAM

Seven
Passengers



The interior of the larger brougham is a tastefully appointed and proportioned drawing room. Such details as the regulators by which the windows may be lowered in pleasant weather are in appropriate design.