

# THE PACKARD STANDARD EIGHT

## Ten Body Types

### 6-26

- THE SEDAN • Five Passengers
- THE CONVERTIBLE COUPE • Two Passengers
- THE COUPE • Two Passengers

### 6-33

- THE COUPE • Four Passengers
- THE CLUB SEDAN • Five Passengers
- THE SEDAN • Seven Passengers
- THE SEDAN-LIMOUSINE • Seven Passengers
- THE RUNABOUT • Two Passengers
- THE PRAMTON • Five Passengers
- THE TOURING • Seven Passengers



## Models Illustrated

### 6-26

- THE SEDAN • Plate One
- THE CONVERTIBLE COUPE • Plate Two
- THE COUPE • Plate Three

### 6-33

- THE COUPE • Plate Four
- THE CLUB SEDAN • Plate Five
- THE SEDAN • Plate Six
- THE SEDAN-LIMOUSINE • Plate Seven
- THE RUNABOUT • Plate Eight
- THE PRAMTON • Plate Nine
- THE TOURING • Plate Ten

*Please refer to last page of Mechanical Features section for specifications concerning Standard Equipment*

**PACKARD MOTOR CAR COMPANY, DETROIT**

Copyright 1921



The Packard Standard Eight  
The Club Sedan  
Five Passengers

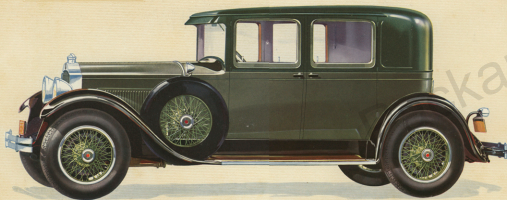


Plate 5



THE PACKARD STANDARD EIGHT 6-33

*Interior of the Club Sedan - Five Passengers*

**T**HE five-passenger club sedan is one of the smartest models of the Packard Eight. Often used for touring, a folding trunk rack is provided as standard equipment so that a rear trunk can be mounted with a minimum of expense. The door and

window mouldings are all genuine black walnut and blend most beautifully with the standard upholstery patterns. This is one of the most comfortable Packard models and combines the intimacy of the coupe with the roominess of the sedan.



The Packard Standard Eight  
The Convertible  
Coupe  
Two Passengers

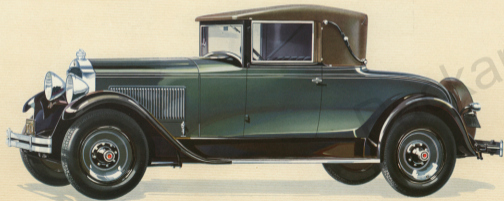
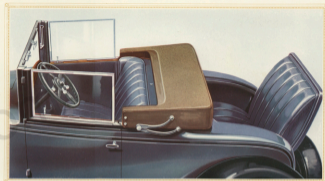


Plate 2



THE PACKARD STANDARD EIGHT 8-26

*Interior of the Convertible Coupe • Two Passengers*

**T**HIS two-passenger convertible coupe has all the advantages of both the closed and open car. It may be used as a coupe or runabout, as the owner pleases. It affords accommodations for extra pas-

sengers in a most comfortable rear seat that folds down neatly and easily when not in use. The top may be lowered quickly and housed in a neatly tailored boot, procurable at a small additional charge.



The Packard Standard Eight  
The Coupe  
Two Passengers

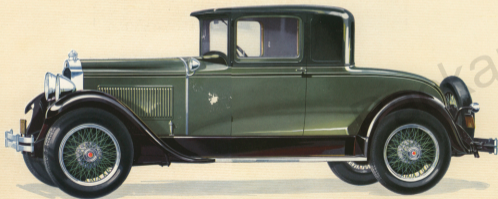
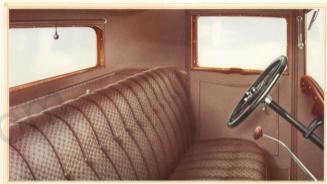


Plate 3



THE PACKARD STANDARD EIGHT 6-26

*Interior of the Coupe • Two Passengers*

THE two-passenger permanent top coupe has accommodations for two additional passengers in a rumble seat that folds flush within the rear deck of the car when not in use. The rear window lowers

by means of a regulator and this affords easy communication among all occupants. Ample luggage space is provided in two compartments, making this car very attractive to business and professional men.





The Packard Standard Eight  
The Coupe  
Four Passengers

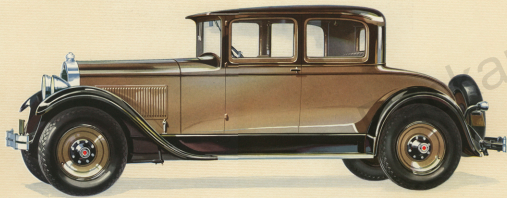


Plate 4



THE PACKARD STANDARD EIGHT 6-35

*Interior of the Coupe • Four Passengers*

**T**his four-passenger coupe continues to be a most popular car among professional or business men and those with small families. The newest model of the Packard Eight seats four adults most com-

fortably. Ample luggage space is provided in the rear deck, furnished with a lock. The various coupes have no roof extension over the windshields but are furnished with drop visors on the inside.



## The Packard Standard Eight

The Phaeton  
for Five Passengers



## THE PACKARD STANDARD EIGHT 6-33

*Interior of the Phaeton - Five Passengers*

THE five-passenger phaeton is often called America's most beautiful car. It has beautiful, flowing lines and in its various optional colorings is a most brilliant car. It is offered with a variety of equipment

and the car shown includes not only wire wheels with cowl lamps and spotlight but has the extra wheels mounted in the front fenders. This combination is a most striking one, and very reasonable in its cost.



The Packard Standard Eight  
The Runabout  
Two Passengers

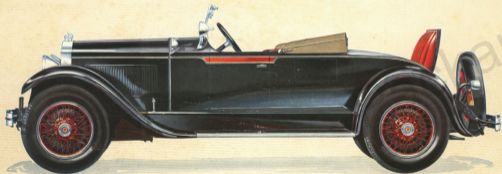
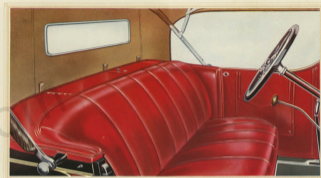


Plate 8



THE PACKARD STANDARD EIGHT 6-33

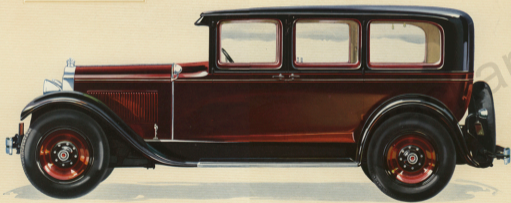
*Interior of the Runabout - Two Passengers*

THE two-passenger runabout is one of the most beautiful of all Packard models. As indicated on the other side of this page, it also has accommodations for additional passengers. Many prefer to

have their cars with wire wheels and cowl and spotlights and these may be had at reasonable prices. Ample luggage room is provided and the rear seat may be comfortably used when the top is down.



The Packard Standard Eight  
The Sedan  
Seven Passengers



THE PACKARD STANDARD EIGHT 6-33

*Interior of the Sedan - Seven Passengers*

THE seven-passenger sedan is offered at no extra cost in a variety of beautiful and tasteful color combinations. This is also true of all the other models shown in this portfolio. All are fully chromium

plated, a treatment affording a brilliancy and a permanency not possible by any other means. The upholstery covering is a beautiful figured broadcloth, pleasing in appearance and lasting in wearing qualities.



The Packard Standard Eight  
The Sedan-Limousine  
Seven Passengers

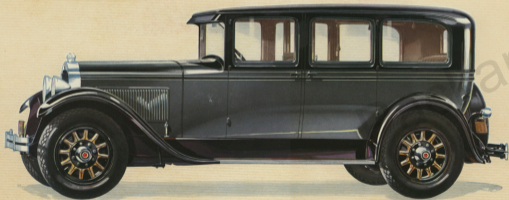


Plate 7



THE PACKARD STANDARD EIGHT 6-33

*Interior of the Sedan-Limousine • Seven Passengers*

THE seven-passenger sedan-limousine may be used readily for either formal or informal use. The two compartments may be used as one or separated by a plate glass division that slides up from within the front seat-back. The two emer-

gency seats also fold away into the seat-back, a most unusual design. The front compartment is trimmed in fine Colonial leather below the belt. A telephone provides communication between the passengers and the driver.





The Packard Standard Eight

The Sedan  
Five Passengers

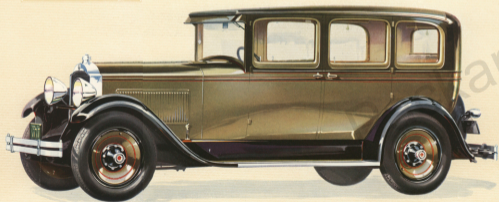
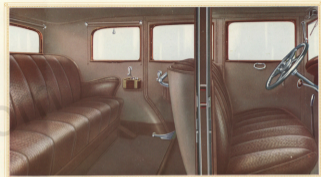


Plate 1



THE PACKARD STANDARD EIGHT 6-26

*Interior of the Sedan - Five Passengers*

This five-passenger sedan is the ideal family car and has long been the most popular of all Packard models. And in it, as in all new Packard Eight cars, the comfort and safety advantages of the ex-

clusive Packard shock-absorbing system have been added to by the use of the finest in upholstery material, including luxury-type springs and the liberal use of genuine curled hair in the cushions.



## The Packard Standard Eight

The Touring  
Seven Passengers

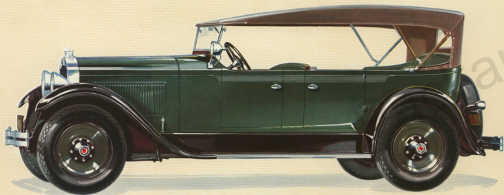
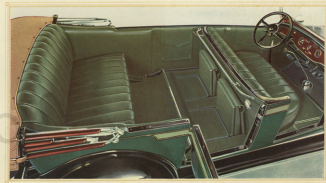


Plate 10



THE PACKARD STANDARD EIGHT 6-33

*Interior of the Touring • Seven Passengers*

**T**HE seven-passenger touring car is still in wide demand notwithstanding the vogue of open cars of a sports appearance. Its long wheelbase, together with its matchless shock-absorbing system and luxurious upholstery, makes it ideal for

touring. The true tourist often seeks the byways as well as the highways, and it is then that riding comfort is most appreciated. Like other Packard open cars, the touring model is trimmed in colored leather matching the exterior paint.