



Front cover

A WIDE SELECTION OF COLORS TO CHOOSE FROM . . . HANDSOME, DURABLE UPHOLSTERIES IN EVERY MODEL . . .

FOR 1942, Packard offers an unusually wide selection of body colors to meet your preference. Both single colors and stunning Multi-tone combinations are available in shades ranging from gayer blues and greens to dignified grays and black. All popular favorites are included and a few exceptionally attractive new combinations have been added.

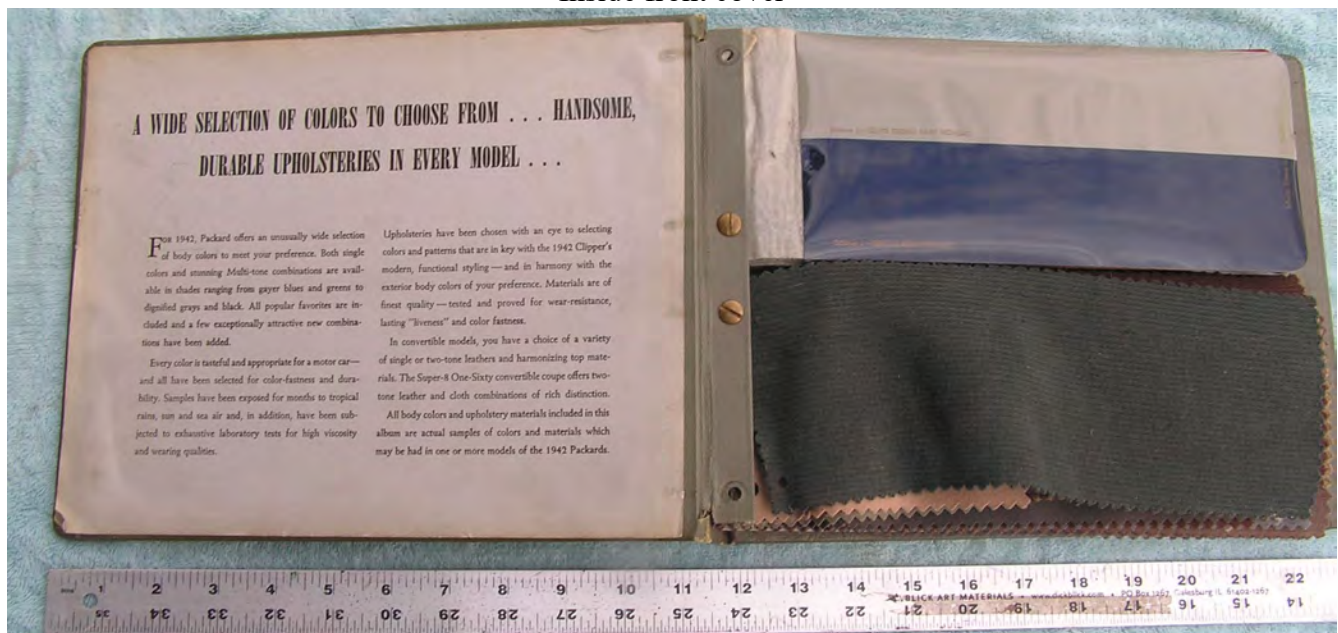
Every color is tasteful and appropriate for a motor car—and all have been selected for color-fastness and durability. Samples have been exposed for months to tropical rains, sun and sea air and, in addition, have been subjected to exhaustive laboratory tests for high viscosity and wearing qualities.

Upholsteries have been chosen with an eye to selecting colors and patterns that are in key with the 1942 Clipper's modern, functional styling—and in harmony with the exterior body colors of your preference. Materials are of finest quality—tested and proved for wear-resistance, lasting "liveness" and color fastness.

In convertible models, you have a choice of a variety of single or two-tone leathers and harmonizing top materials. The Super-8 One-Sixty convertible coupe offers two-tone leather and cloth combinations of rich distinction.

All body colors and upholstery materials included in this album are actual samples of colors and materials which may be had in one or more models of the 1942 Packards.

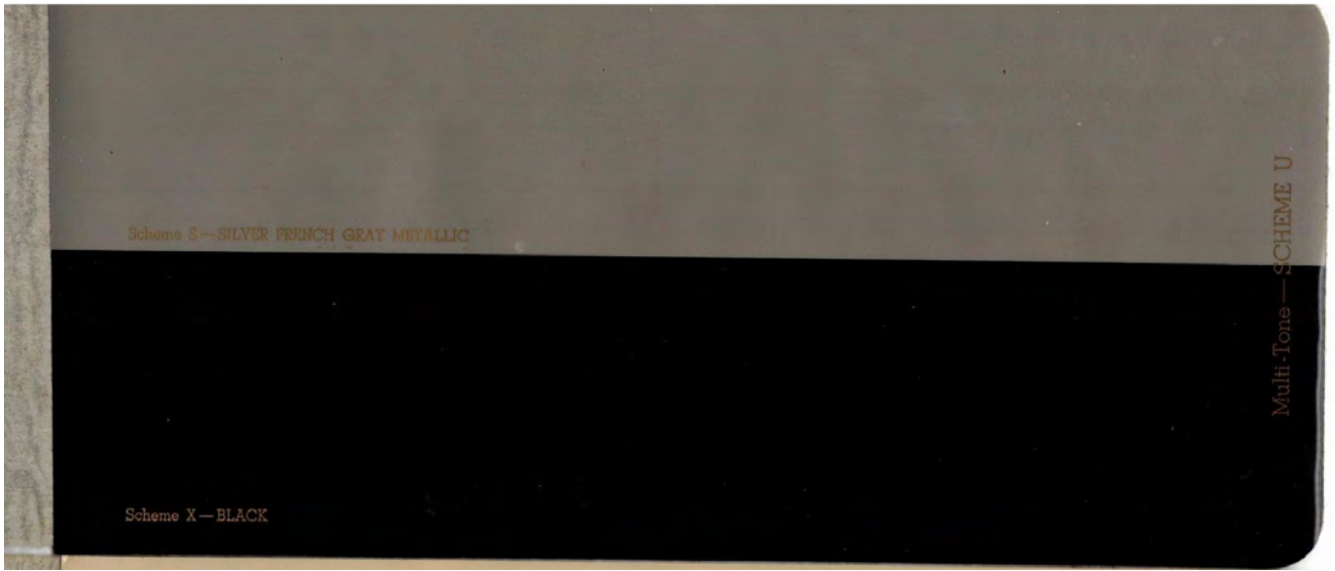
Inside front cover

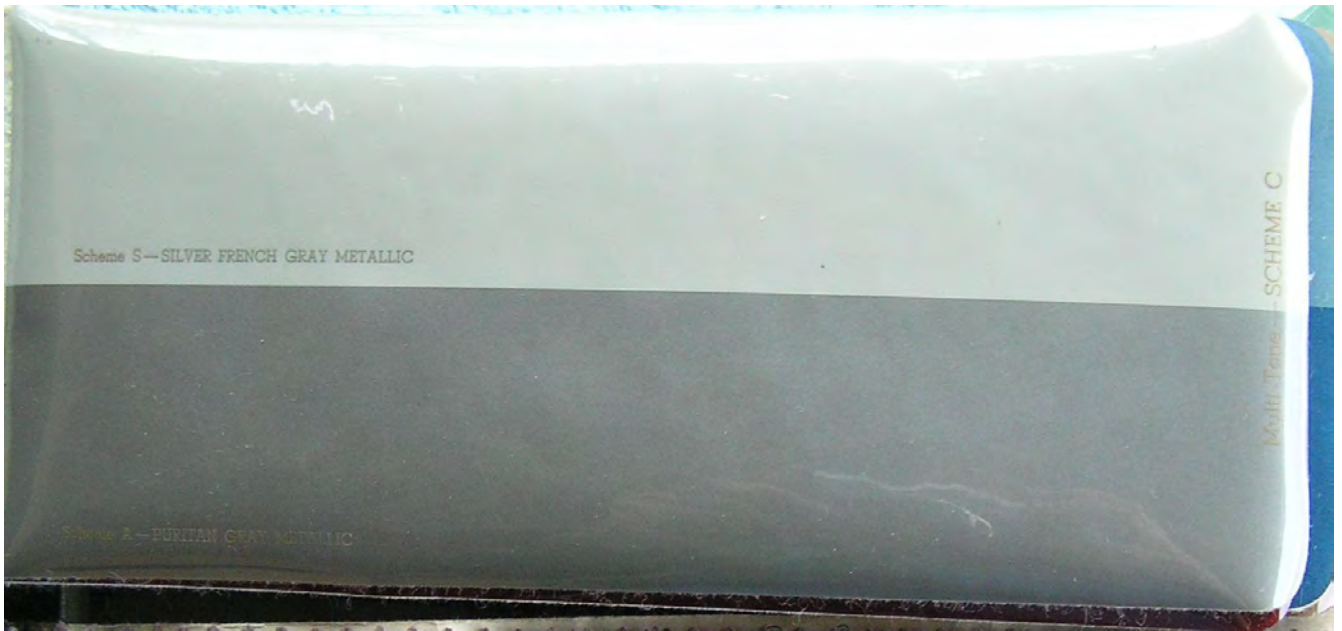


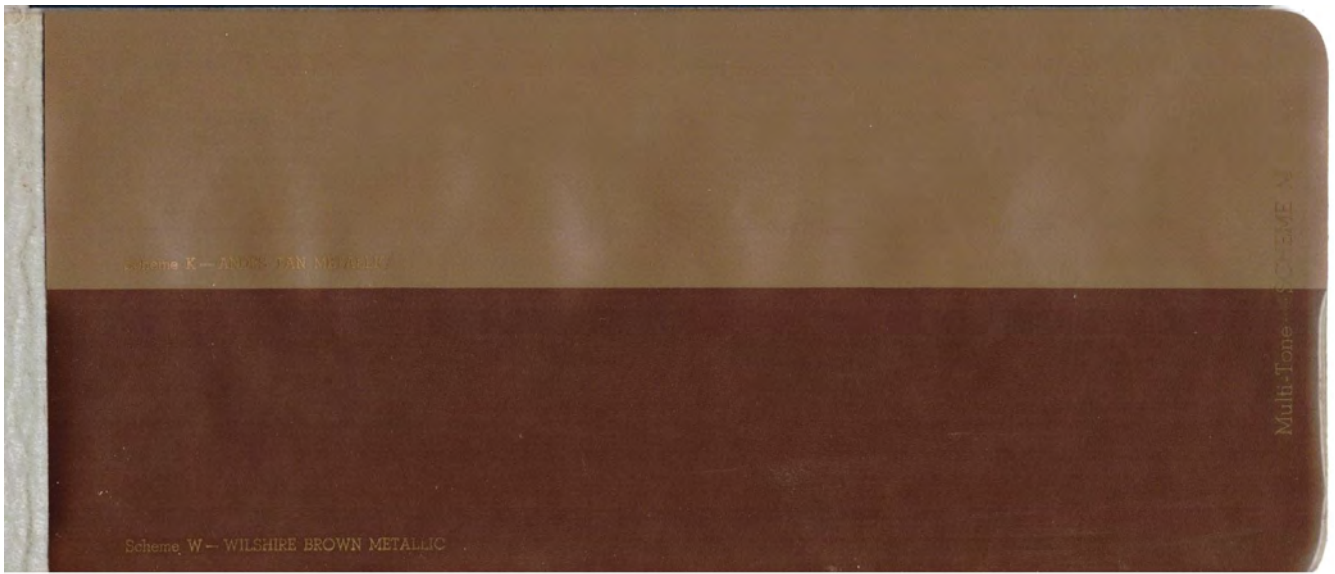
Layout of book

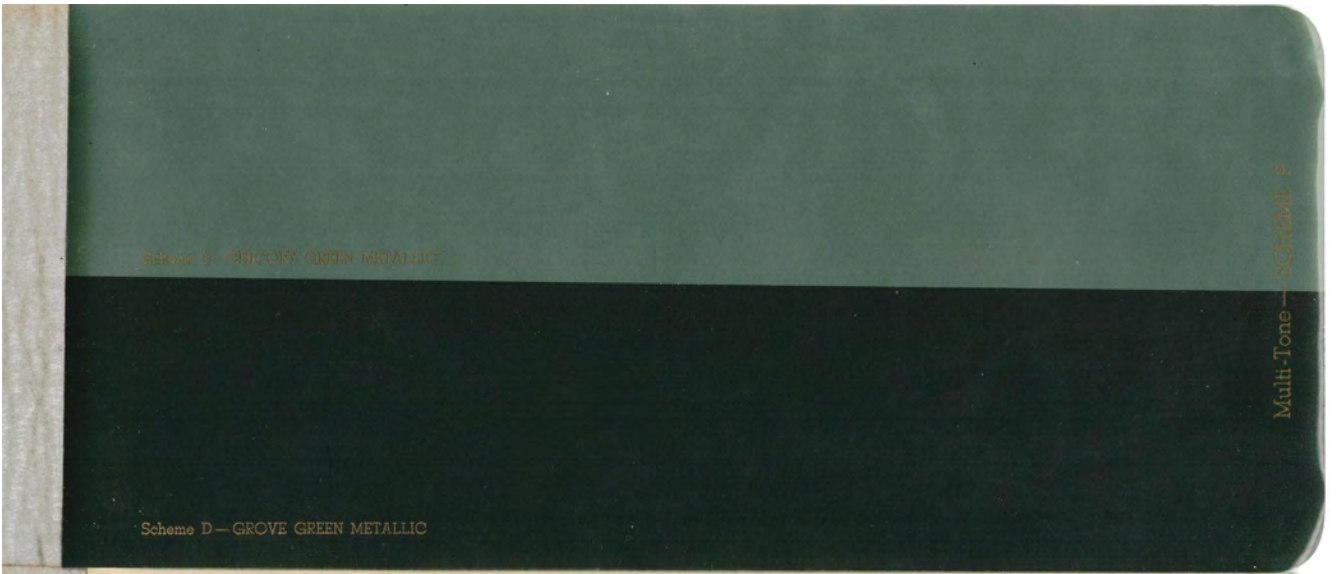


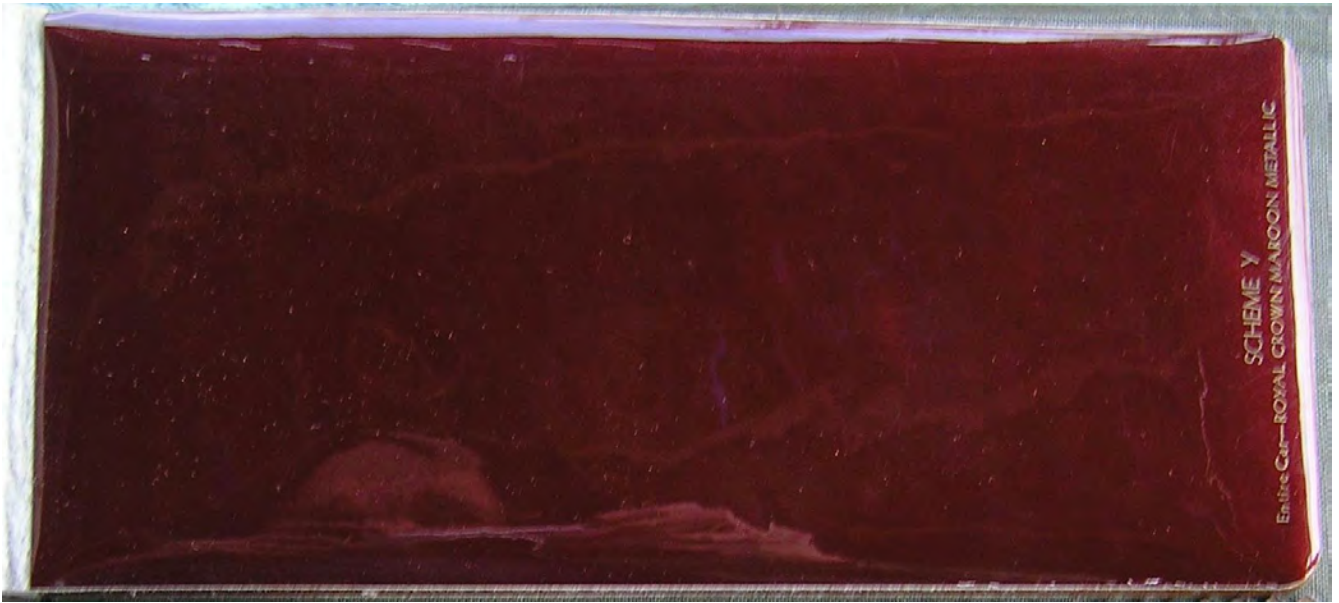








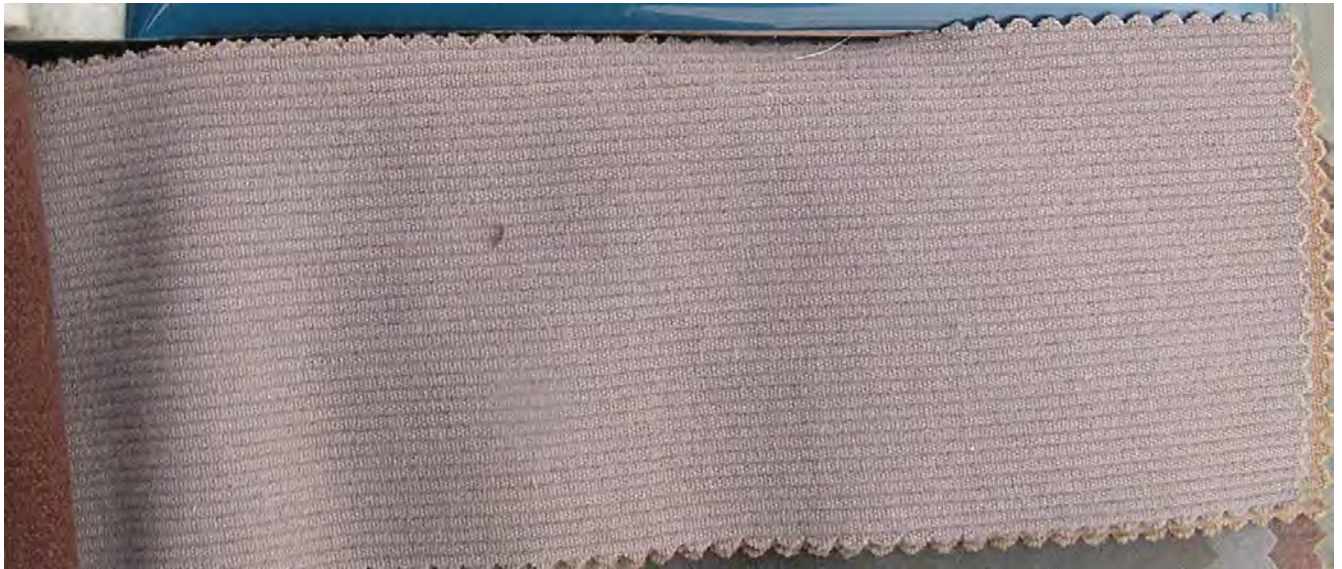




Back Cover

UPHOLSTERY









Packard Custom One-Eighty

| | | |
|---|--|--|
|  |  |  |
| <p>TRIM SET No. 144 BLUE-GRAY STRIPE BROADCLOTH TENITE COLOR GRAY Standard with Paint Schemes A B C F L S</p> | <p>TRIM SET No. 148 BLUE BEDFORD CORD TENITE COLOR GRAY Standard with Paint Scheme Z</p> | <p>TRIM SET No. 186 GRAY BEDFORD CORD TENITE COLOR GRAY Standard with Paint Scheme H</p> |

Packard Custom One-Eighty



TRIM SET No. 144
BLUE-GRAY STRIPE

Standard with Paint Schemes A, B, F



TRIM SET No. 745
BLUE-GRAY COMBINATION

Standard with Paint Schemes C, S

Packard Custom One-Eighty



TRIM SET No. 161
TAN PIN STRIPE BROADCLOTH

Standard with Paint Schemes D J P T X



TRIM SET No. 719
BROWN-TAN COMBINATION

Standard with Paint Schemes E K M Q W Y Z

Packard One-Sixty

TAN PIN STRIPE
BROADCLOTH No. 73

Body Types — 1572
and 1575 Only

STANDARD WITH PAINT

SCHEMES **D J**
P T
X



