

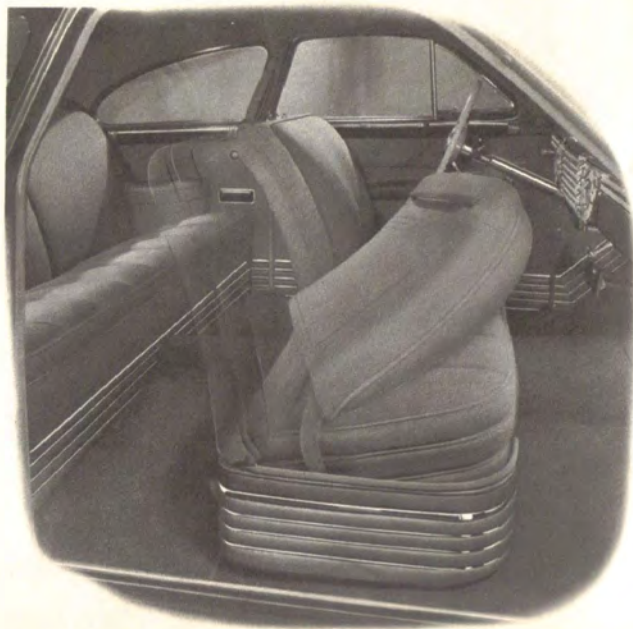
PACKARD SENIOR CARS

1942



The
Clipper Club Sedan

MOTORDOM'S newest style — at its customized best in the Packard One-Eighty. All the advantages of the Clipper's *functional* beauty — vastly improved roominess, riding comfort and convenience among them — are enhanced by the distinction of custom treatment that characterizes the One-Eighty. A wide door, and an ingeniously-designed forward seat that *actually* folds out of the way, make entering and leaving gracefully easy. Enclosed running boards, of course. Exceptional body width made possible by "Fade-away" fenders gives this compact, easy-to-handle car abundant 6-passenger roominess.

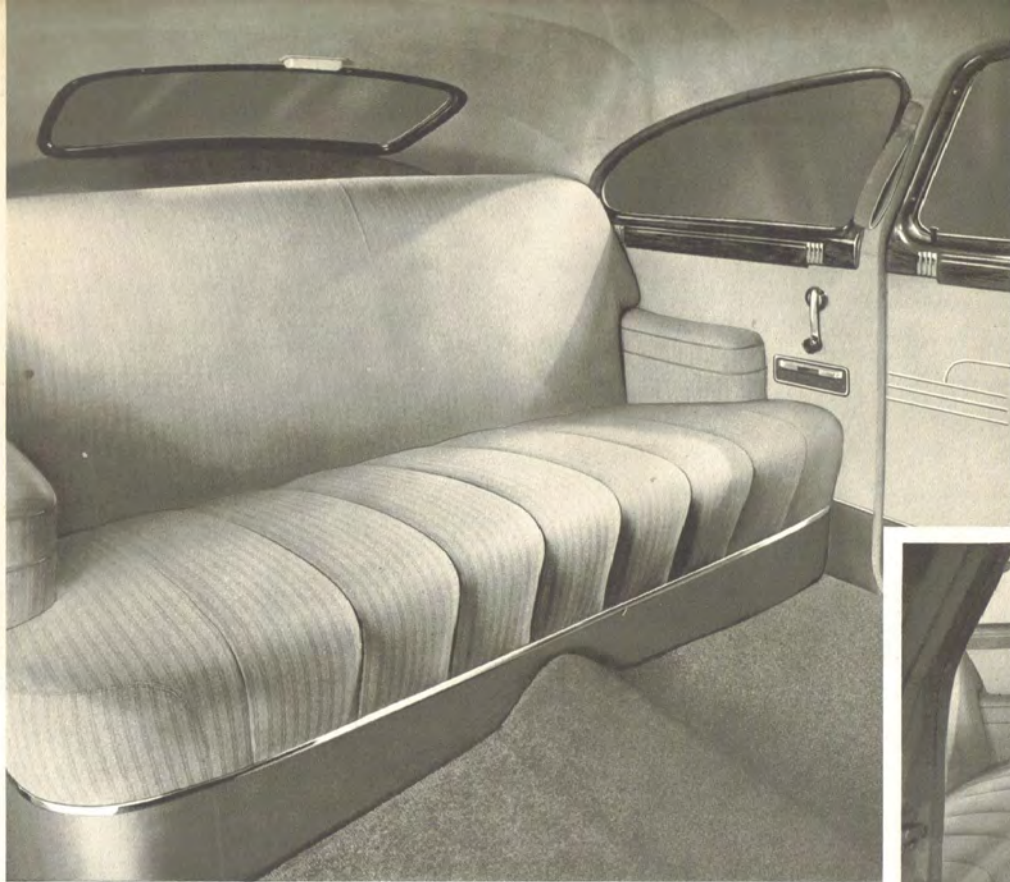




PACKARD SUPER-8 ONE-SIXTY

The Clipper Club Sedan

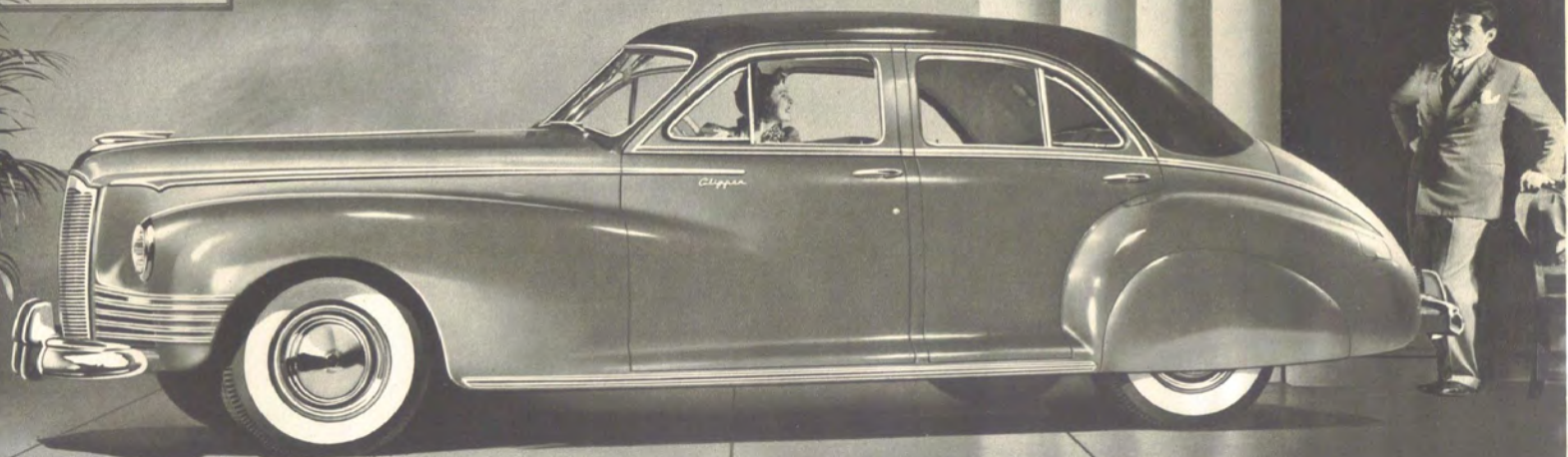
165 HORSEPOWER • 127-INCH WHEELBASE



*The
Clipper Club Sedan*



*R*EMARKABLE is the word for it! Full headroom front and rear—even though it's only a trifle over five feet high. Mounted on a long wheelbase, yet so compactly styled that it slips with ease into parking spots and average garages. Offering seats of davenport width—without requiring any undesirable increase in overall car width—thanks to its front and rear Fade-away fenders! The Swing-aside seat is just one of its many innovations.



PACKARD SUPER-8 ONE-SIXTY

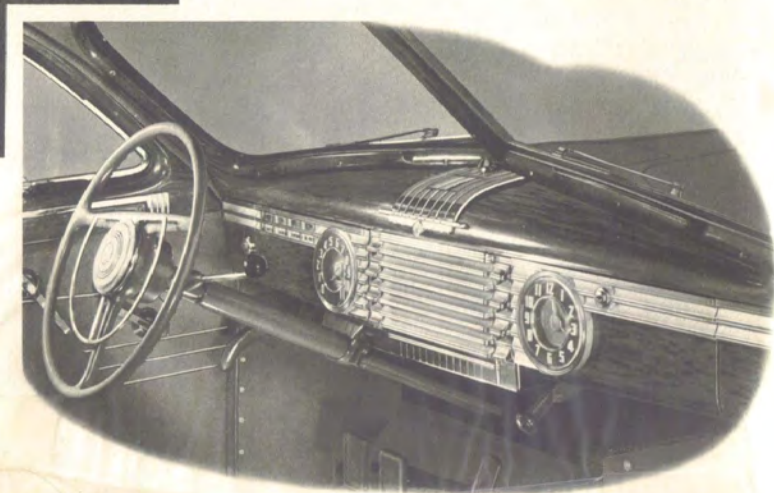
The Clipper Touring Sedan

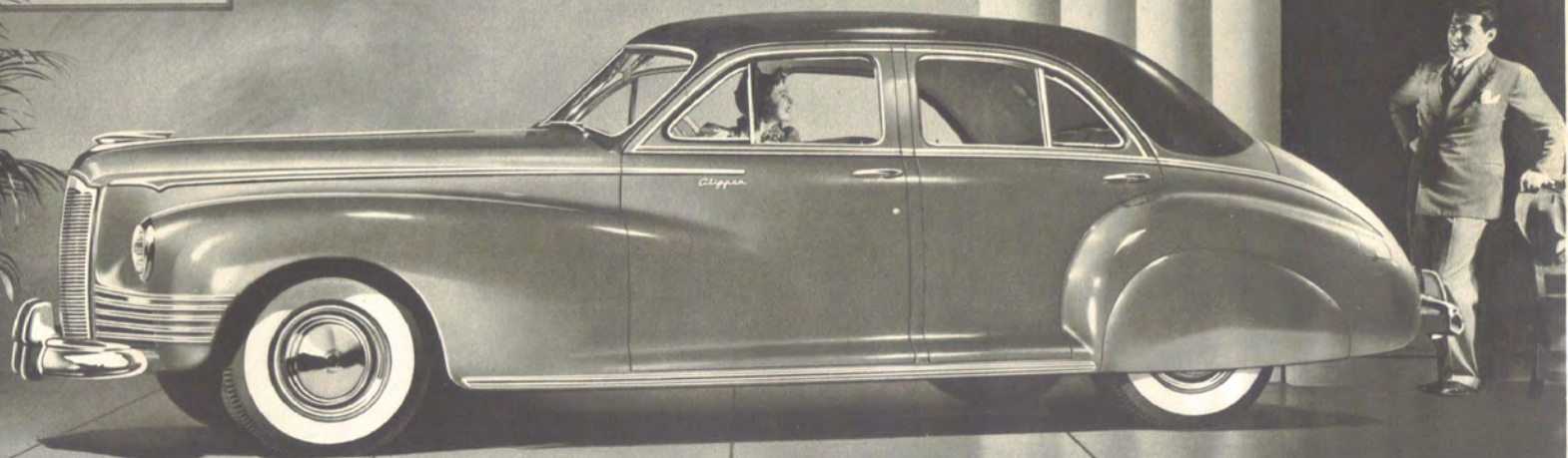
165 HORSEPOWER • 127-INCH WHEELBASE



The Clipper Touring Sedan

*A*LREADY acclaimed as America's new style leader, this Clipper-fashioned four-door sedan achieves ultra-modern distinction without losing any of its Packard identity. It has all the size, all the smartness, all the dignity a Senior Packard should have. It has full headroom, front and rear—even though it barely comes up to the eye level of a man of normal height. And spirit! Other cars can only *hope* to out-perform it!





PACKARD SUPER-8 ONE-SIXTY

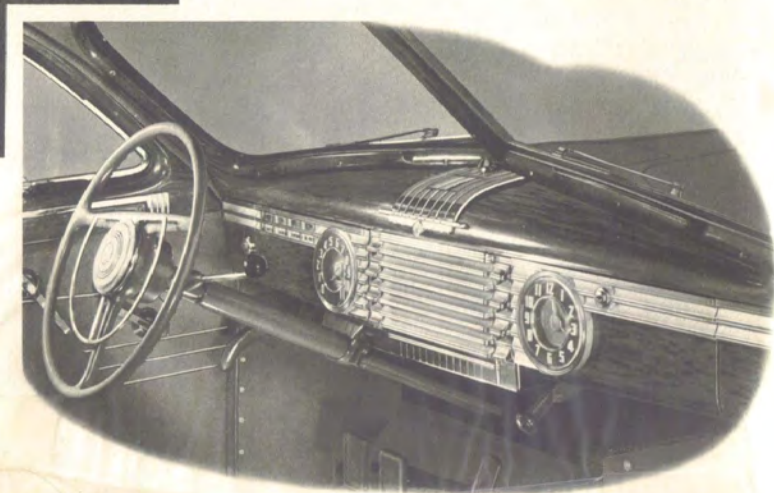
The Clipper Touring Sedan

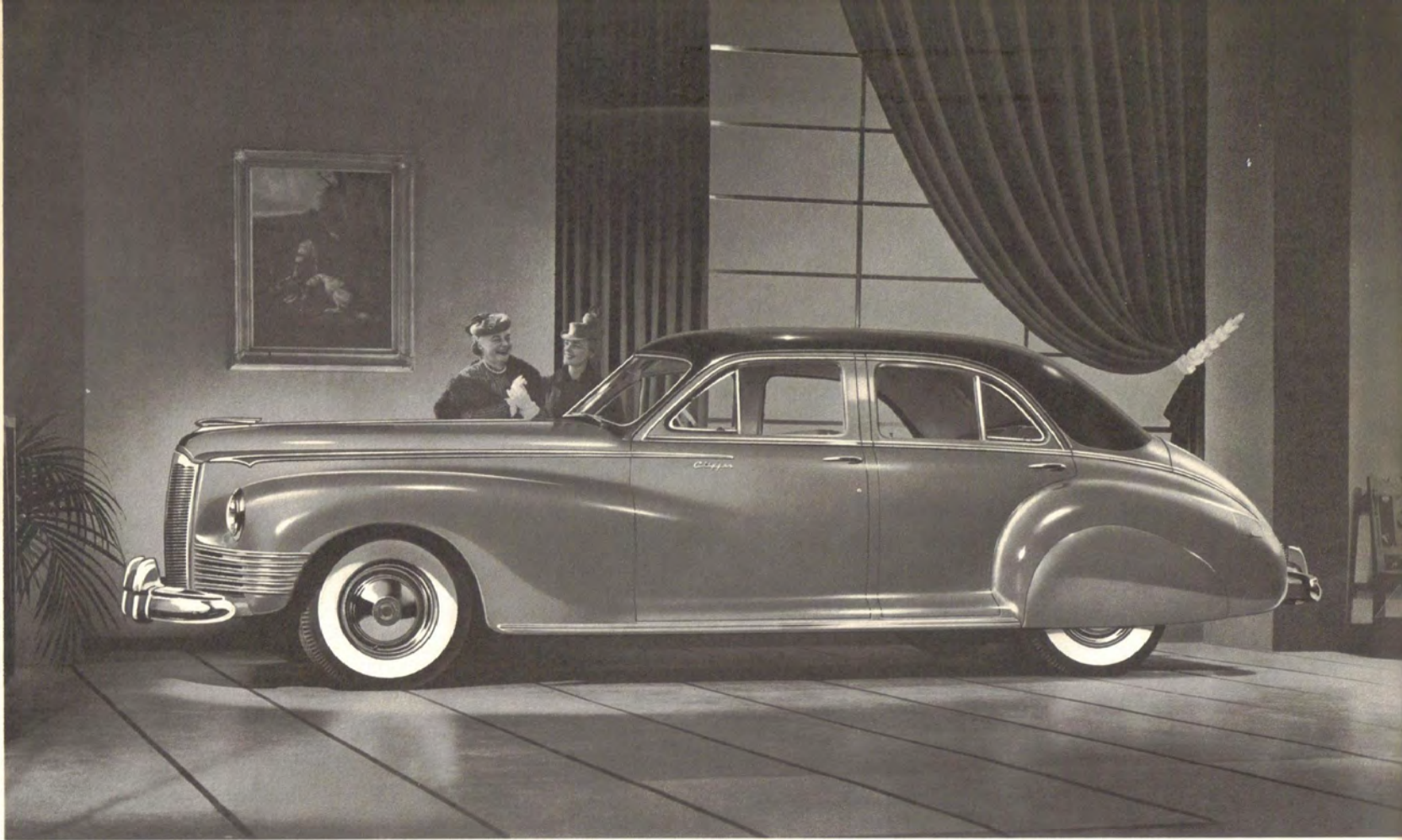
165 HORSEPOWER • 127-INCH WHEELBASE



The Clipper Touring Sedan

*A*LREADY acclaimed as America's new style leader, this Clipper-fashioned four-door sedan achieves ultra-modern distinction without losing any of its Packard identity. It has all the size, all the smartness, all the dignity a Senior Packard should have. It has full headroom, front and rear—even though it barely comes up to the eye level of a man of normal height. And spirit! Other cars can only *hope* to out-perform it!

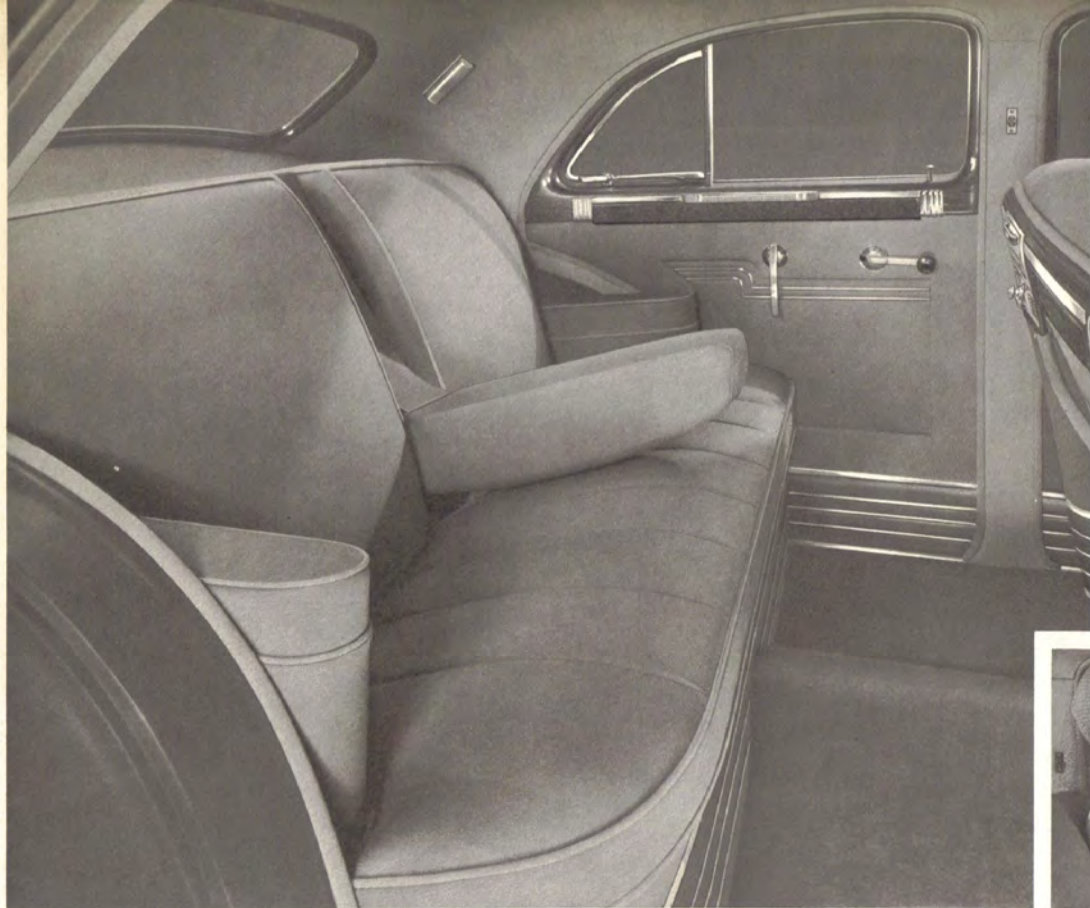




PACKARD SUPER-8 CUSTOM ONE-EIGHTY

The Clipper Touring Sedan

165 HORSEPOWER • 127-INCH WHEELBASE



The
Clipper Touring Sedan

STYLE SENSATION of the year, the One-Eighty Clipper is a daringly magnificent motor car creation. Its *functional* streamlining changes previous conceptions that a car must be big to be luxuriously roomy. In its compact overall length, this custom Clipper offers modern beauty and luxury unrivalled in the motor car field—along with evidences of quality coachcraft that identify the One-Eighty as the finest of the Packards. A revolutionary new car in every respect, the Clipper handles in an amazingly easy new way that makes driving it a brand-new motoring experience.





PACKARD SUPER-8 ONE-SIXTY

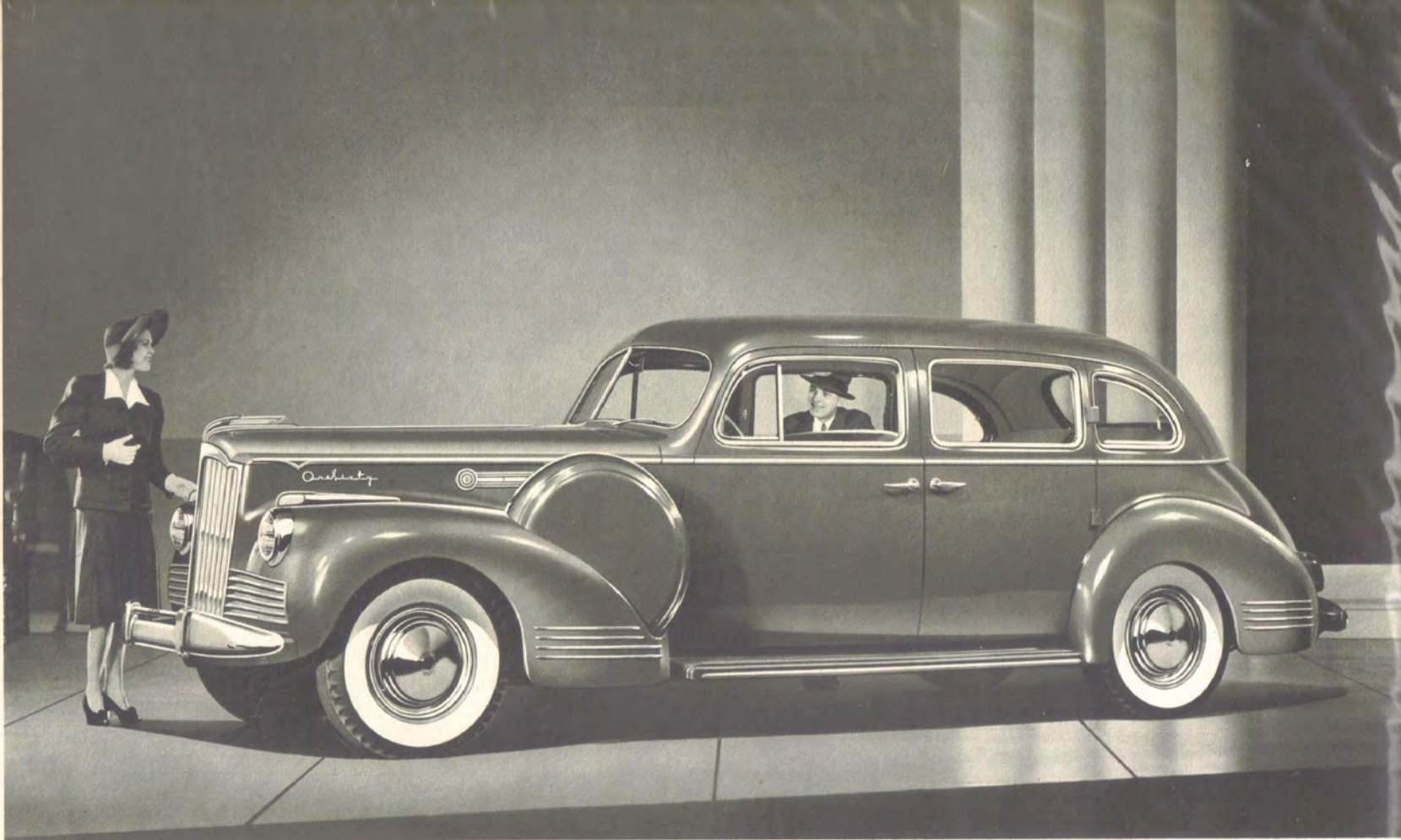
The Convertible Coupe

165 HORSEPOWER • 127-INCH WHEELBASE

*The
Convertible Coupe*



DESIGNED to be aimed at horizons—with exciting interiors to match its character! You have a choice of nine single colors in soft, genuine leather . . . or three two-tone leather combinations . . . or five leather and cloth combinations. The instrument panel and two-tone steering wheel are colored to harmonize with the upholstery—even the floor carpets, front and rear, are in shades that blend beautifully with the interior scheme! And the top? Power-operated, of course—just touch a button, up it comes. A single handle locks it in position at three points; exclusive Packard construction keeps it snug-fitting, rattle-free, weatherproof. Your choice of five top colors.

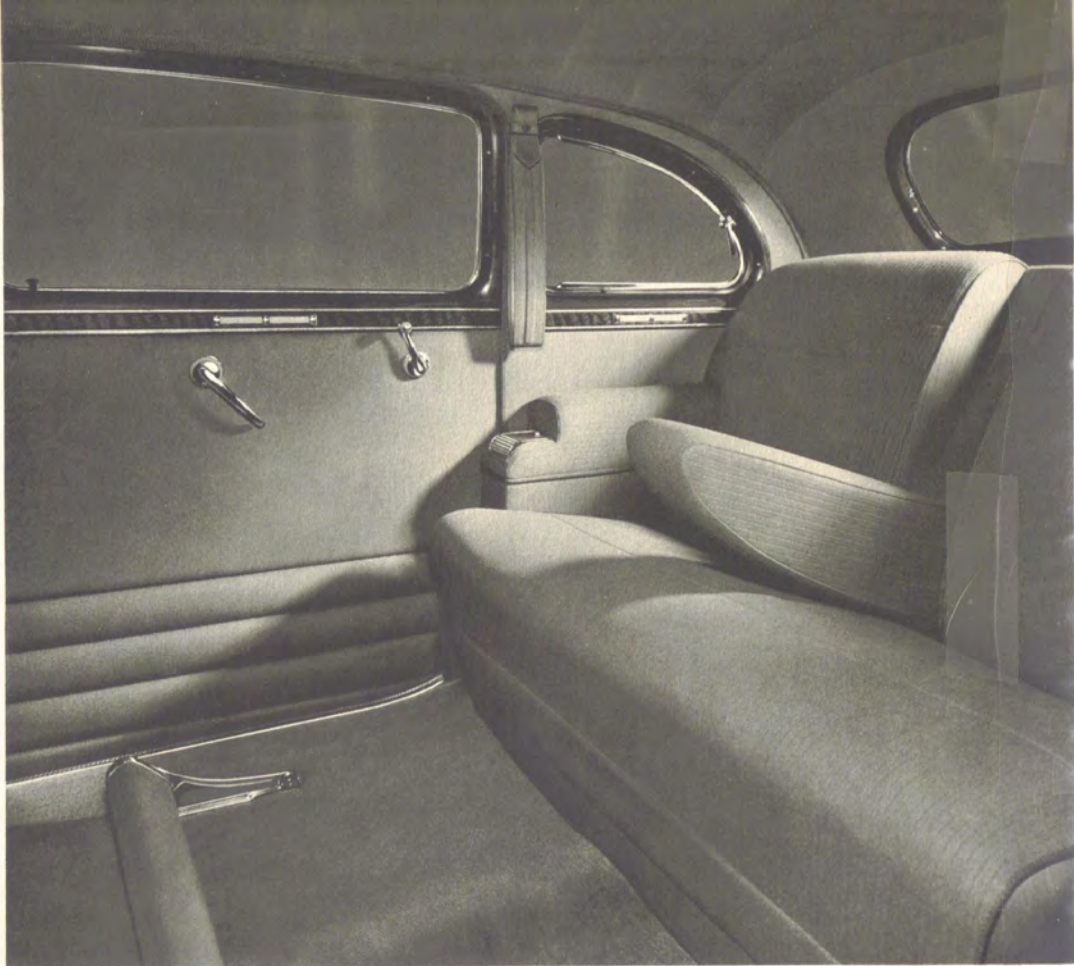


PACKARD SUPER-8 ONE-SIXTY

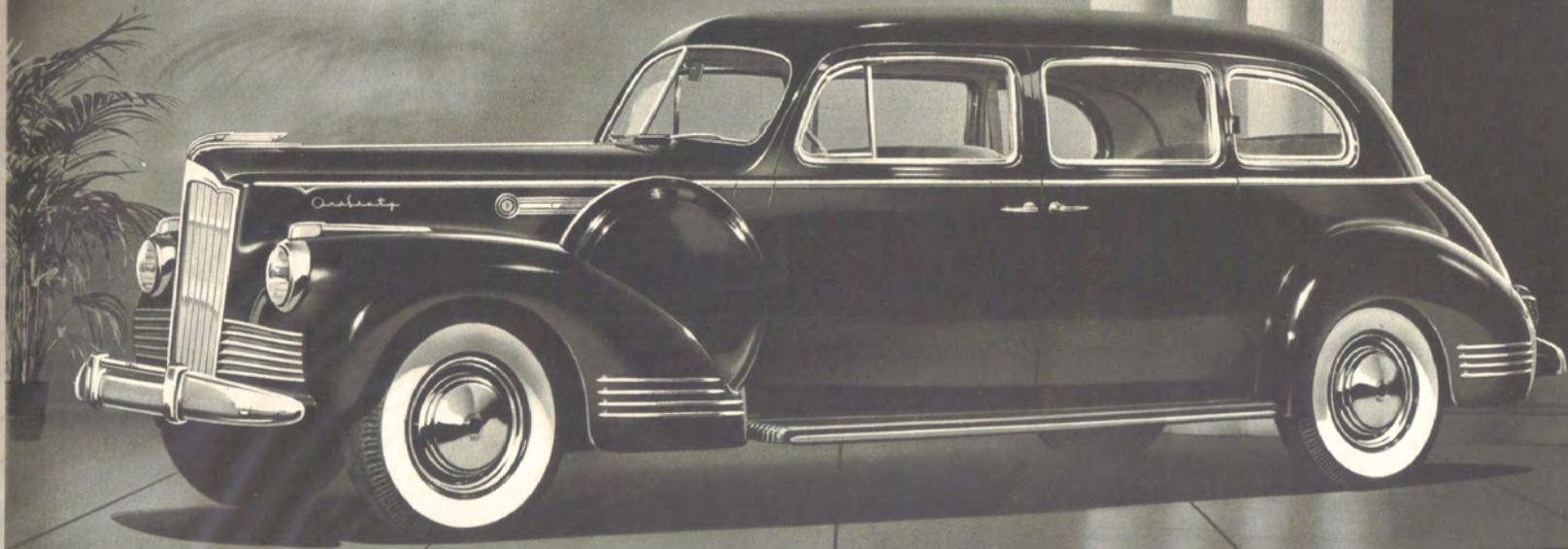
The Sedan for five passengers

165 HORSEPOWER • 138-INCH WHEELBASE

*The Sedan
for five passengers*



*A*SSIST CORDS, ventilation controls, roll-top ash receivers —all are at your finger-tips in this luxurious new Super-8 sedan. Cushions are covered with highest grade wool broadcloth, in any one of three popular selections. Seat bases are in brown leather material, trimmed with stainless steel. The broad center arm rest, the rich carpeting, the smartly-grained walnut wainscots are typical of its other appointments.

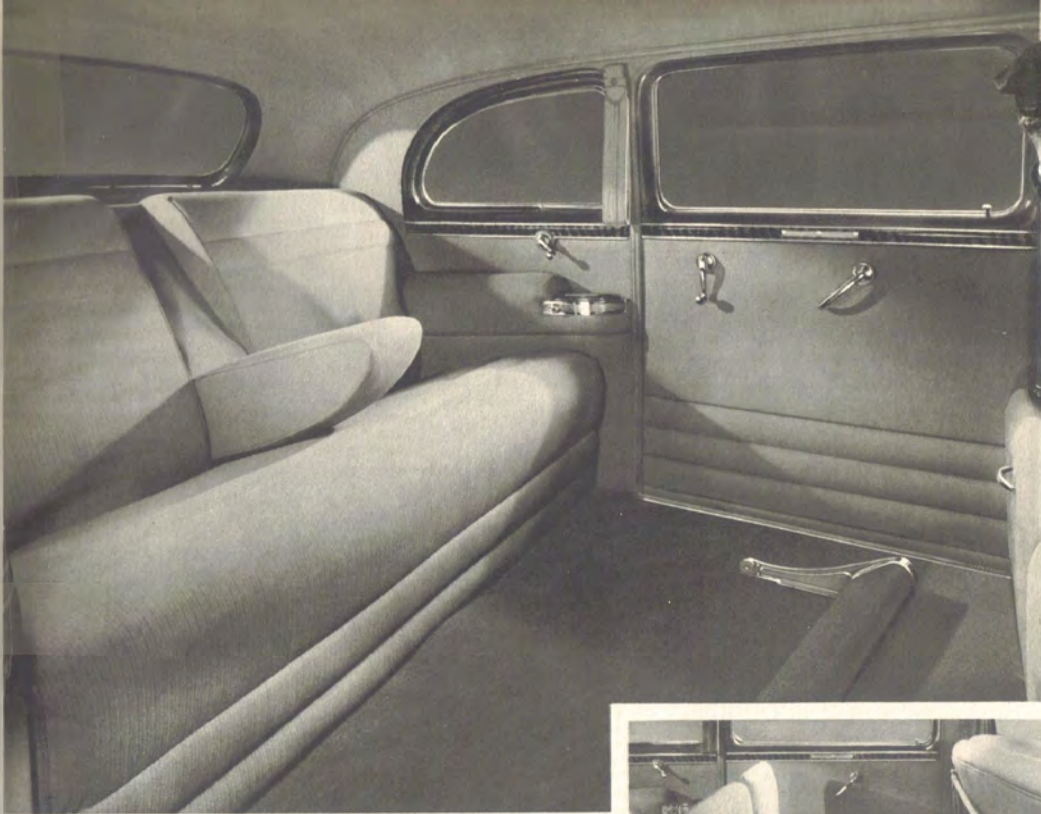


PACKARD SUPER-8 ONE-SIXTY

The Sedan for eight passengers

also available as a Limousine

165 HORSEPOWER • 148-INCH WHEELBASE

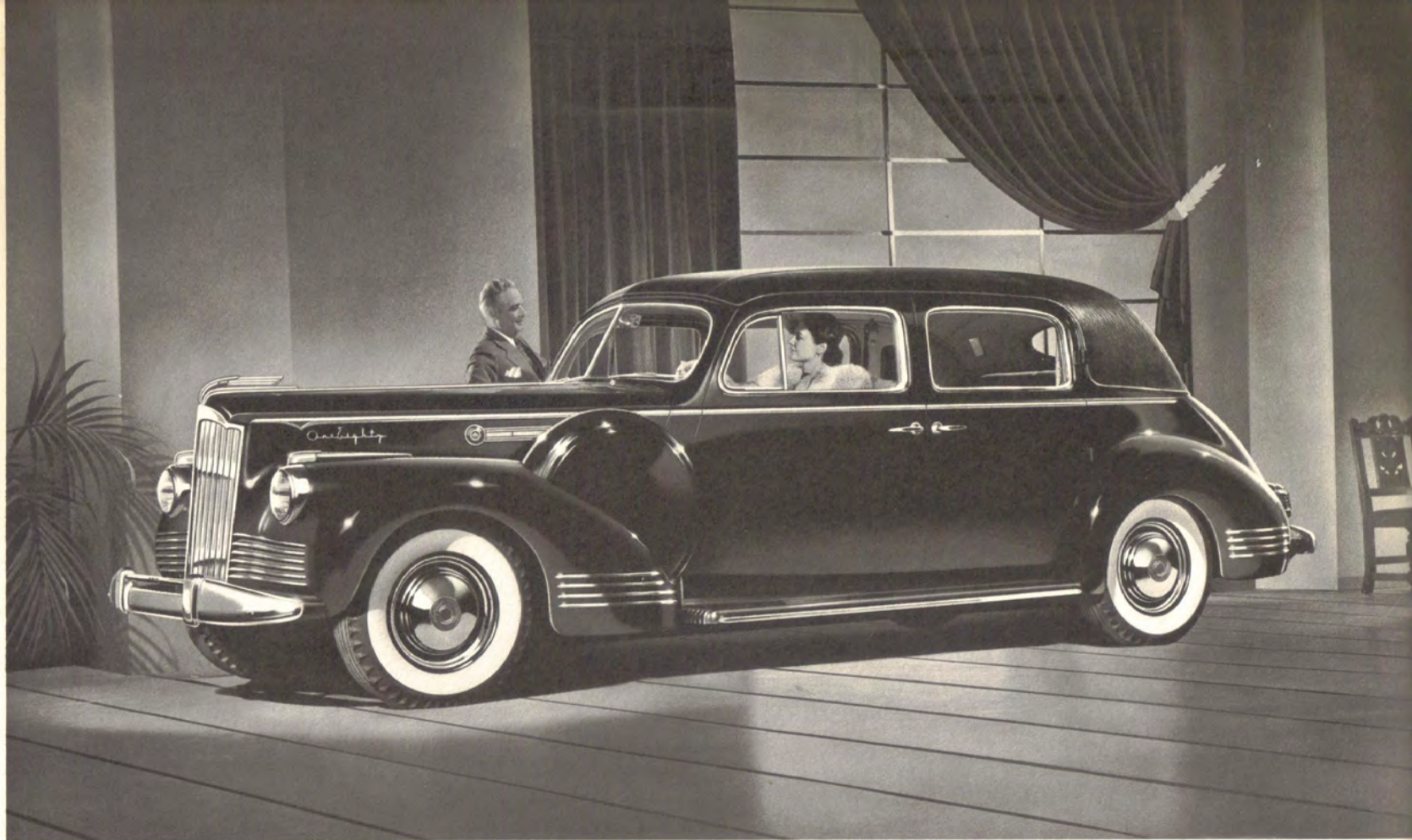


*The Sedan
for eight passengers*

*A*MAZING roominess combines with lasting luxury in this king of the Super-8 line. The broad center arm rest, softly padded foot rest, and built-in smoking cabinets are typical of its thoughtful appointments.



*T*HE SMARTLY tailored auxiliary seats, offering even enough room for three passengers, fold neatly away when not in use. A glass partition is installed behind the chauffeur's compartment when this body style is fitted out as a Limousine.



PACKARD SUPER-8 CUSTOM ONE-EIGHTY

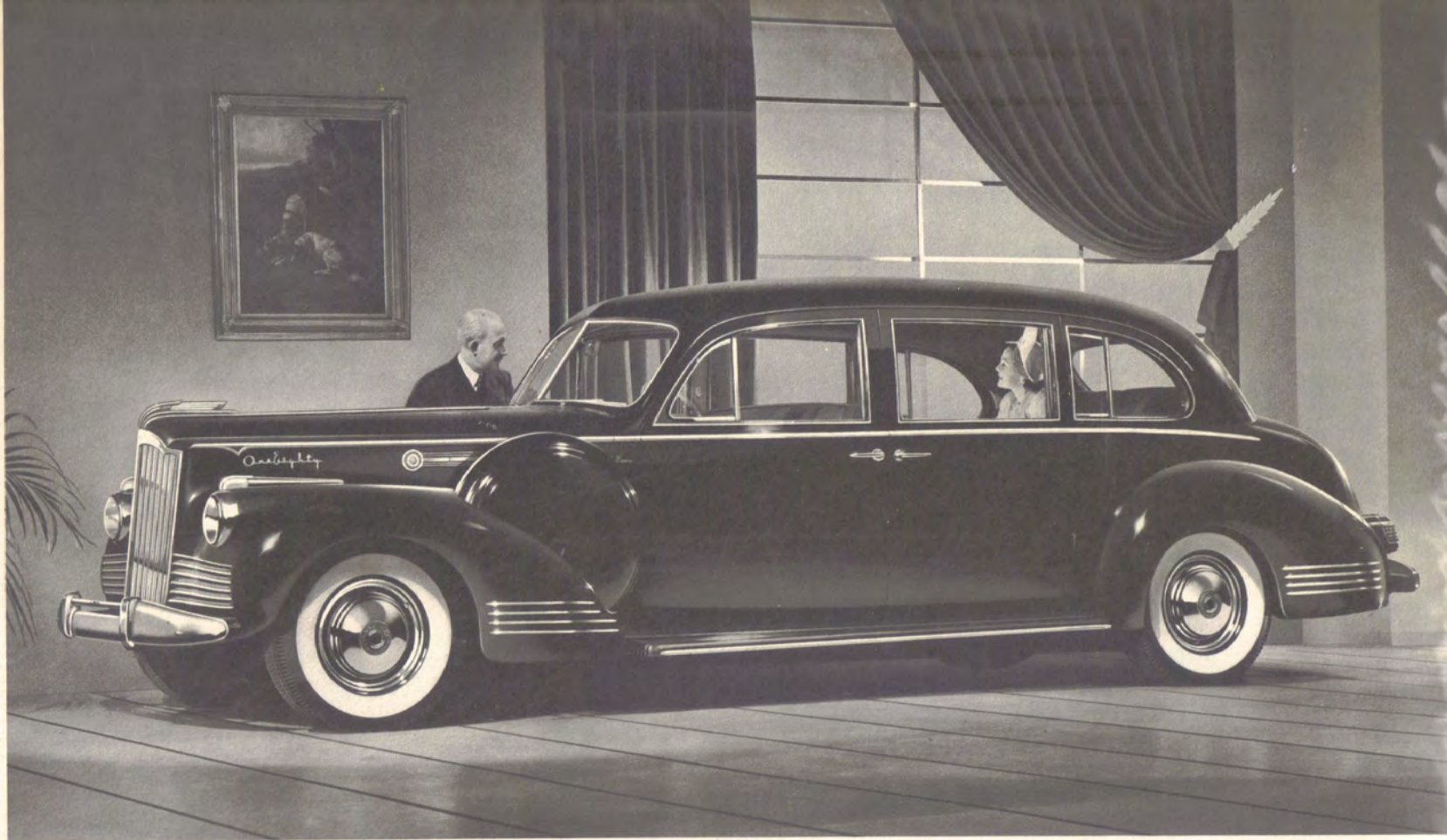
The Formal Sedan

165 HORSEPOWER • 127-INCH WHEELBASE

*The
Formal Sedan*



A BLACK LEATHER top and closed rear quarters identify the smartly stunning Formal Sedan — a car of winning individuality. The intimacy and protection of its interior arrangement delight owners who ask for more than usual dignity and privacy. Naturally, its tailoring and appointments are appropriately conservative. Interior styling is highlighted by such features as the roll-topped seat partition with inset clock, a side-facing auxiliary seat and a handy package compartment on the right-hand side of the partition.



PACKARD SUPER-8 CUSTOM ONE-EIGHTY

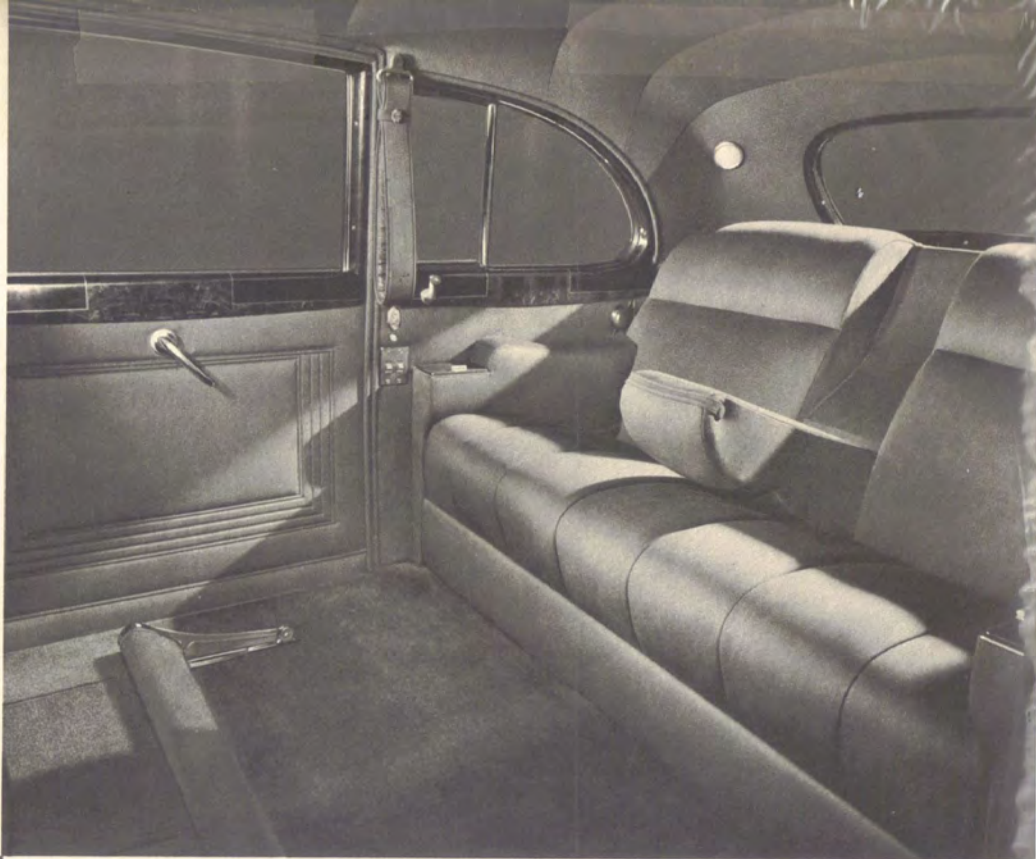
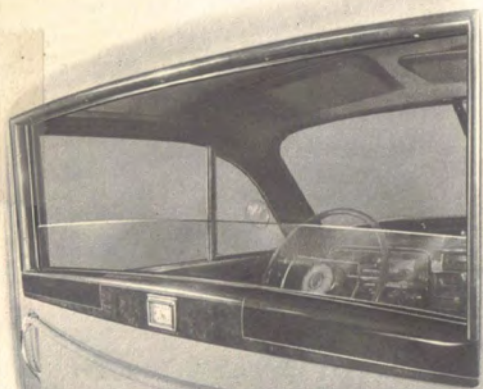
The Limousine

body by LeBaron

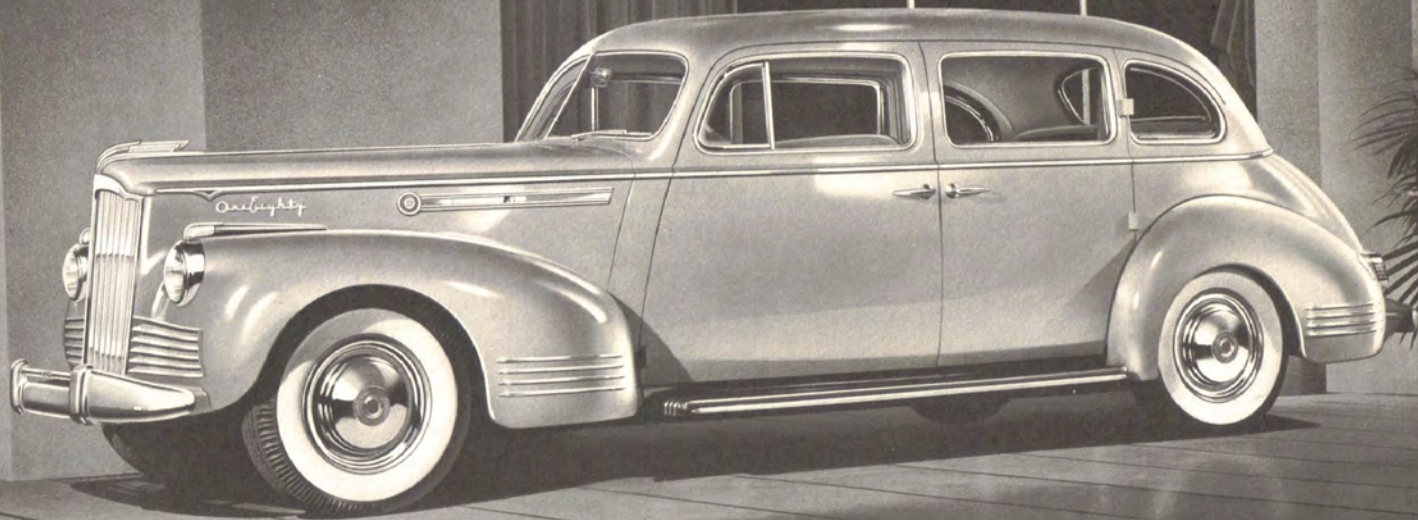
165 HORSEPOWER • 148-INCH WHEELBASE

The Limousine

Available as a 7-passenger sedan without the between-compartments partition, or as a limousine with it, this custom creation provides an owner-to-chauffeur telephone in the latter case.



*W*ITHOUT question, the Packard LeBaron offers the peak of custom elegance in a motor car. Spacious luxury is set off by hand-finished woodwork, square cut-around windows . . . superbly tailored upholsteries . . . appointments, including button controls for electrically operated windows, that tell eloquently of artistic craftsmanship. Folding seats fit flush into the forward partition, neatly out of the way when not in use.

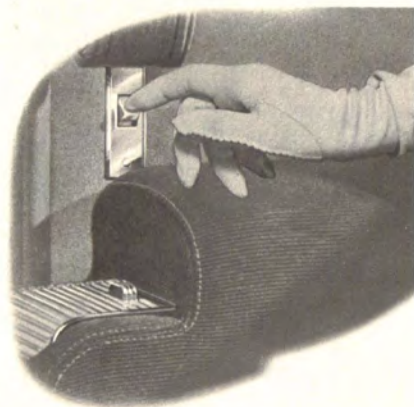
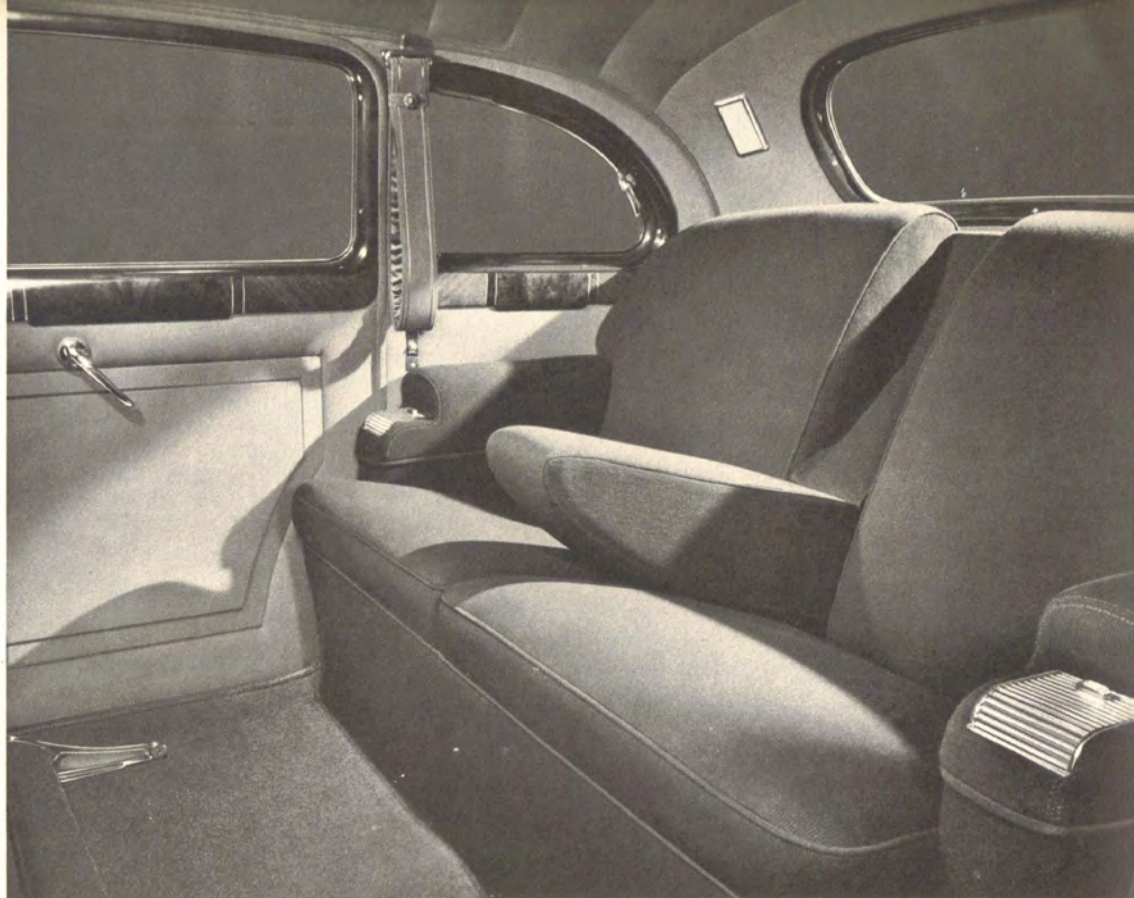


PACKARD SUPER-8 CUSTOM ONE-EIGHTY

The Touring Sedan

165 HORSEPOWER • 138-INCH WHEELBASE

The
Touring Sedan



*F*INEST QUALITY glows in every detail of its restrained, tasteful simplicity—a fact that makes this sedan a favorite of the most discriminating owners. Even its luxury is not obtrusive. For example, at your finger tips you find one inconspicuous convenience after another—a tidy roll-top ashtray in each side arm rest, a lighter in one . . . a button that turns on a reading lamp . . . and a control that needs only a touch to raise or lower windows automatically, shown in the close-up at the left. This is a car that becomes a proud possession—in families where selections are made carefully.



PACKARD SUPER-8 CUSTOM ONE-EIGHTY

The Convertible Victoria

body by Darrin

165 HORSEPOWER • 137-INCH WHEELBASE

*The
Convertible Victoria*

