



REG. U. S. PAT. OFFICE

# RINSHED-MASON COMPANY DETROIT, MICHIGAN

## 1955 CLIPPER AND PACKARD COLORS

SCHEME  
LETTER

SCHEME  
LETTER

SCHEME  
LETTER



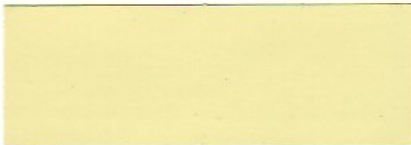
N AGATE  
55K82



G MOONSTONE  
55K12



A JADE  
55K31



P CITRINE  
55K83



H GRAY PEARL IRIDESCENT  
55K11



B TOURMALINE  
55K32



R SARDONYX  
55K84



J FIRE OPAL  
55K51



C EMERALD IRIDESCENT  
55K33(GS)



U ROSE QUARTZ  
55K71



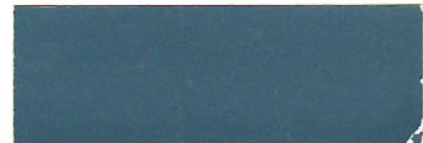
K TOPAZ IRIDESCENT  
55K81



D ZIRCON  
55K21



L TURQUOISE  
55K24



E ULTRAMARINE IRIDESCENT  
55K22



M WHITE JADE  
55K91



F SAPPHIRE IRIDESCENT  
55K23

### TWO-TONE COMBINATIONS

CG(U)\* EMERALD IRIDESCENT  
(L) MOONSTONE  
BA(U)\* TOURMALINE  
(L) JADE  
CA(U)\* EMERALD IRIDESCENT  
(L) JADE

BG(U)\* TOURMALINE  
(L) MOONSTONE  
FG(U)\* SAPPHIRE IRIDESCENT  
(L) MOONSTONE  
ED(U)\* ULTRAMARINE IRIDESCENT  
(L) ZIRCON

FD(U)\* SAPPHIRE IRIDESCENT  
(L) ZIRCON  
EG(U)\* ULTRAMARINE IRIDESCENT  
(L) MOONSTONE  
GL(U)\* MOONSTONE  
(L) TURQUOISE

(TWO-TONE COMBINATIONS CONTINUED ON BACK)

1955  
PACKARD

## TWO-TONE COMBINATIONS (Continued)

VP(U) BLACK (L) CITRINE	KP(U) TOPAZ IRIDESCENT (L) CITRINE	MR(U) WHITE JADE (L) SARDONYX
VJ(U)* BLACK (L) FIRE OPAL	KN(U) TOPAZ IRIDESCENT (L) AGATE	HG(U)* GRAY PEARL IRIDESCENT (L) MOONSTONE
JM(U)* FIRE OPAL (L) WHITE JADE	KM(U)* TOPAZ IRIDESCENT (L) WHITE JADE	VM(U)* BLACK (L) WHITE JADE
NM(U)* AGATE (L) WHITE JADE	MP(U)* WHITE JADE (L) CITRINE	

## THREE-TONE COMBINATIONS (Caribbean Model Only)

(NOTE: The "M" in combination numbers below indicates middle section)

MUH(U) WHITE JADE (M) ROSE QUARTZ (L) GRAY PEARL IRIDESCENT	MAC(U) WHITE JADE (M) JADE (L) EMERALD IRIDESCENT
MJV(U) WHITE JADE (M) FIRE OPAL (L) BLACK	MDF(U) WHITE JADE (M) ZIRCON (L) SAPPHIRE IRIDESCENT

\*REVERSIBLE COMBINATION.

NOTE: Colors available by TINTOMETER (intermix) formula.

### 1954 PACKARD

R-M Number	Color	Combination Numbers
54K11	VARSITY GRAY IRIDESCENT	A, AF(U)
53K21	MERIDIAN BLUE IRIDESCENT	B, BC(U)
53K22	POLARIS BLUE	C, BC(L), TC(L)
54K12	MACKINAW GRAY	F, AF(L), XF(L)
54K21	BIKINI BLUE IRIDESCENT	H, HT(U)
53K31	GALAHAD GREEN IRIDESCENT	K, KO(U), KN(U)
54K31	BELLEVUE GREEN	N, KN(L)
53K32	ORCHARD GREEN	O, KO(L)
39K71	PACKARD IVORY	T, HT(L), UT(L), TC(U)
54K51	CHARIOT RED	G
54K32	GULF GREEN IRIDESCENT	J
50K61	MATADOR MAROON IRIDESCENT	U, UT(U)
53K82	SAHARA SAND	W

### 1953 PACKARD

53K11	REGIMENTAL GRAY IRIDESCENT	A, AF(U)
53K21	MERIDIAN BLUE IRIDESCENT	B, BH(U)
53K22	POLARIS BLUE	C
53K71	CAROLINA CREAM	D, HD(L), UD(L), XD(L)
53K12	DRESDEN GRAY IRIDESCENT	F, AF(L), XF(L)
50K24	YOSEMITE BLUE IRIDESCENT	H, BH(L), HT(U)
53K31	GALAHAD GREEN IRIDESCENT	K, KO(U)
51K61	SUNSET RED IRIDESCENT	L, LM(U), LT(U)
53K81	TOPEKA TAN	M, UM(L)
53K32	ORCHARD GREEN	O, KO(L)
50K23	TURQUOISE BLUE LIGHT	S
39K71	PACKARD IVORY	T, HT(L), LT(L), UT(L), XT(L)
50K61	MATADOR MAROON IRIDESCENT	U, UM(U), UT(U)
53K82	SAHARA SAND	W
54K32	GULF GREEN IRIDESCENT	J

### 1952 PACKARD

50K22	PACKARD BLUE IRIDESCENT	B, BH(U)
52K11	LABRADOR GRAY	D, XD(L)
50K11	ARGENTINE GRAY IRIDESCENT	G
50K24	YOSEMITE BLUE IRIDESCENT	H, BH(L)
52K31	GALLANT GREEN IRIDESCENT	J, JO(U)
50K31	VALLANT GREEN IRIDESCENT	K
51K61	SUNSET RED IRIDESCENT	L, LM(U), LT(U)
51K11	TWILIGHT TAUPE IRIDESCENT	M, LM(L)
52K32	ASPEN GREEN	O, JO(L)
50K23	TURQUOISE BLUE LIGHT	S
39K71	PACKARD IVORY	T, XT(L), LT(L)
50K61	MATADOR MAROON IRIDESCENT	U

### 1955 CLIPPER AND PACKARD

(Space below intended for insertion of any changes or additions to 1955 Color Specifications)

Comb. No.	R-M No.	NAME