

OPERATION

1. Switch and Volume Control (left knob). Clockwise rotation of this first turns the radio on and further rotation increases the volume.
2. Manual Tuning Control (right knob). This control is for manual selection of stations. Careful tuning will produce the best reception possible in line with reception conditions.
3. Tone Control (left lever). Maximum counterclockwise position of this control gives emphasized bass reproduction, while in the clockwise position the treble tones are predominate.
4. Push Buttons. The five push buttons are for automatic tuning of five pre-selected stations, the tuning operation being accomplished by merely fully depressing one of the buttons as far as possible. To change the push button setting, see paragraph 10 of Radio Installation section.

SERVICE

If service is required during the warranty period, the car owner should go to his Packard Dealer to obtain warranty service or to the nearest Authorized United Motors Service Radio Service Station.

WARRANTY

The manufacturer warrants each new radio receiving set or part manufactured by it to be free from defects in material and workmanship under normal use and service, its obligation under this warranty being limited to making good at its factory or at any UMS Authorized Service Station, any part or parts thereof which shall within ninety (90) days after delivery of such radio set to the original purchaser or 4000 miles of operation of the vehicle after installation of the radio receiving set, whichever shall first occur, be returned to its authorized dealer with transportation charges prepaid and at its examination shall disclose to its satisfaction to have been defective: this warranty being expressly in lieu of all other warranties, expressed or implied, and of all other obligations and liabilities on its part and the manufacturer neither assumes nor authorizes any other person to assume for it any other liability in connection with the sale of its product.

This warranty shall not apply to any radio receiving set which shall have been repaired or altered outside manufacturer's authorized radio service stations in any way so as in the judgment of the manufacturer to effect its stability, or on which parts not made or authorized by the manufacturer have been used for replacement or other purposes, nor which has been subject to misuse, negligence, or accident.

OWNER'S MANUAL

PACKARD CUSTOM RADIO

WITH PUSHBUTTON TUNING

SEVEN TUBES PLUS RECTIFIER

MODELS PA-439661
PA-439665

INSTALLATION AND OPERATING
INSTRUCTIONS

GIVE THIS MANUAL TO THE OWNER

PACKARD MOTOR CAR COMPANY

DETROIT 32, MICHIGAN

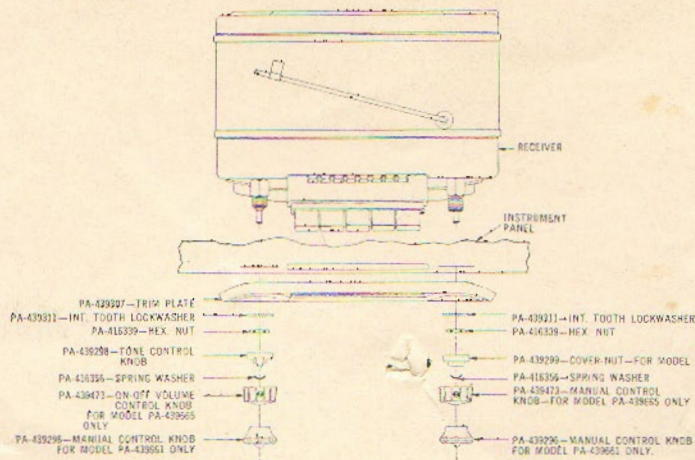


Figure 1

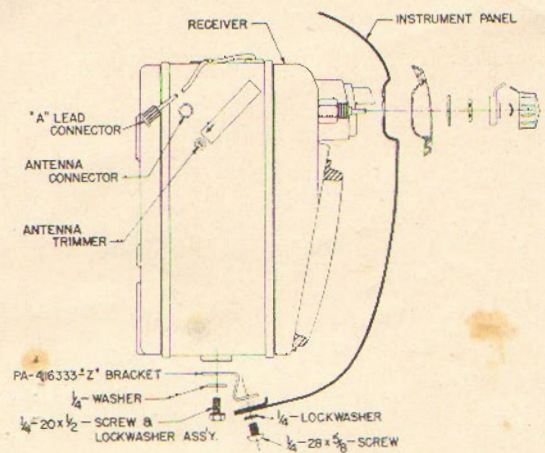


Figure 2

PART NUMBER REFERENCE

	Packard Part No.	UMS Service Part No.
Knob - Control	PA-439296	7263495
Knob - Control	PA-439473	7260187
Knob - Tone	PA-439298	7263486
Lockwasher	PA-439311	7263688
Nut - Hex	PA-416339	7235969
Spring Washer	PA-416356	7257400
Trim Plate	PA-439307	7263485
Cover - Nut	PA-439299	7263503

PART NUMBER REFERENCE

	Packard Part No.	UMS Service Part No.
"Z" Bracket	PA-416333	7260146
Capacitor - Generator	PA-403998	7259644
Capacitor - Ignition	PA-383088	7259643
Suppressor	PA-383086	6007
Feed Cable	PA-439671	7260148
Fuse	PA-362555	147685

RADIO INSTALLATION

(See Figures 1 and 2)

- Remove the decorative cover (on the instrument panel) which covers the opening for the radio dial and controls by rotating the two speed nuts 90°. See below.*
- Mount the "Z" bracket to the bottom of the RADIO using the plain washer and the screw and lockwasher assembly. Tighten "hand tight." (Fig. 2)
- Lift the set up behind the instrument panel and guide the volume control and manual control shafts through the instrument board openings. (Fig. 1)
- Put the control trim plate on the shafts and attach with thin nut and internal tooth lockwasher.
- Attach "Z" bracket to the hole provided in the instrument panel with a self-tapping screw and lockwasher. Then tighten the screw holding the "Z" bracket to the radio. (Fig. 2)
- Put the tone control lever on the left shaft. Then, place spring washer on the shaft between the tone control lever and knob. Put cover nut and spring washer on right shaft. Tighten the set screws in both knobs. (Fig. 1)
- Connect the "A" lead to the ignition switch terminal marked ACC. Insert fuse and connect to lead from the receiver.
- Plug antenna lead into the socket shown in Fig. 2.
- Turn the radio on and allow it to warm up (10 to 15 minutes). With the antenna fully extended, tune in a weak station between 1000 and 600 KC and adjust the antenna trimmer for maximum volume. (See Fig. 2)
- Set the five push buttons as follows:
 - Turn the set on and allow to warm up for ten or fifteen minutes.
 - Select stations in order of their frequency. It is suggested that they be arranged with the lower frequency station on the left, etc.
 - Pull the button slightly to the left and out as far as it will go.
 - Manually tune in the desired station making certain that the signal is tuned in accurately.
 - Push the button in firmly to the end of its travel.
 - Repeat the same procedure for the remaining four buttons. Each station can be readily identified by the dial pointer which indicates the station frequency.
 - A station setting may be changed at any time by repeating the above procedure.

*Remove courtesy lamp on cars that have the courtesy lamp in the center of the instrument board and replace after installing radio.

INTERFERENCE SUPPRESSION

(See Figures 3, 4 and 5)

IMPORTANT

Care in performing these operations will result in satisfactory elimination of ignition noise. Be sure that all condenser cases make good ground connections, and that all connections are tight.

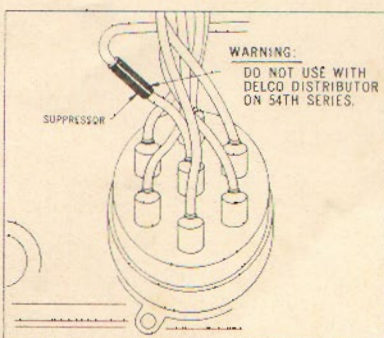


Figure 3

On Autolite Distributors only, cut the distributor-to-coil high-tension lead about one inch from the distributor cap and install the screw-in type suppressor.

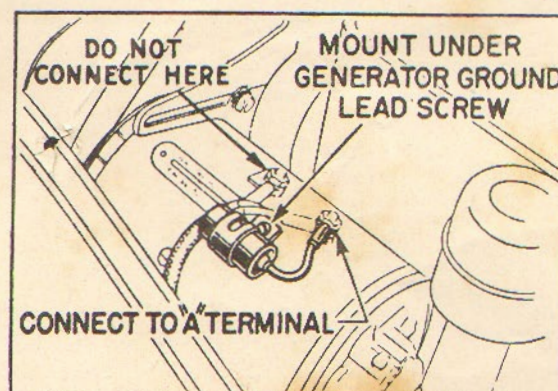


Figure 4

A .5-mfd. capacitor Part Number PA-403998 is mounted on the generator and connected to the armature terminal.

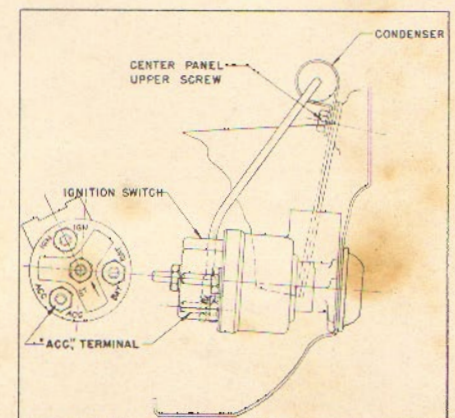


Figure 5

A .5 mfd. capacitor, Part Number PA-383088, is required on the ignition switch. Connect the capacitor lead to the ACC. terminal of the ignition switch, and mount the capacitor bracket under the center panel upper screw.