

PACKARD
Custom Cars
PackardInfo.com

PACKARD

Custom

Cars

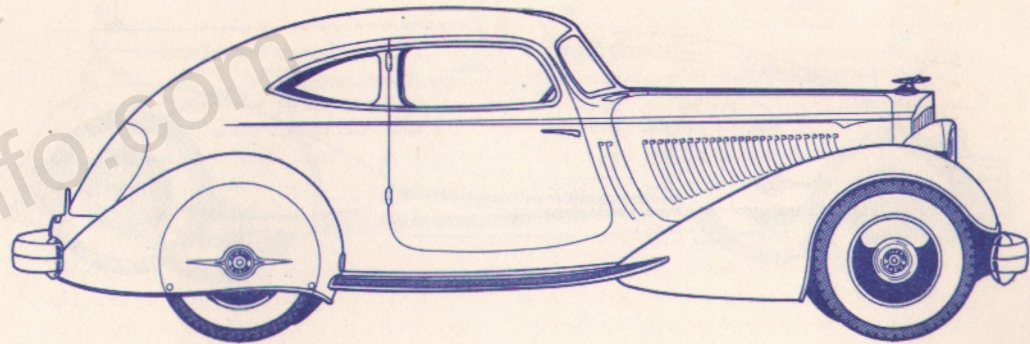


PACKARD

Custom Cars



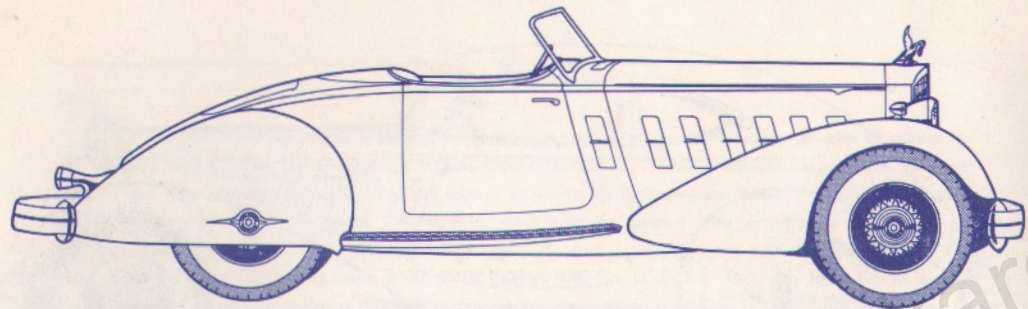
TO THE MAN who knows old Masters, understands fine Gobelins, enjoys rich Orientals and appreciates the other treasures of his home—a Packard Custom Car for his garage! Each supplements the other in its finished artistry and rare perfection. And each offers the same joy of owning a masterpiece of limited edition. + + That the Packard edition should be the most distinguished of all custom body offerings is only natural. Two important points justify that statement. One: experience as the first fine car builder to fashion the enclosed body for the automobile, a hand-built custom creation. And two: a graceful chassis of long, lithe lines best fitted to enhance the flowing beauty of the custom builder's skill. Out of this rare combination now comes an array of custom models that answer every rigid requirement of the discriminating buyer who craves the finest in things artistic. + + For this select clientele Packard has literally combed the world of custom design. In its 1934 custom models Packard offers the works of its own artists and those of other far-famed names. Like a jewel in a fine setting, each is at its best on the Packard chassis. Not only are the fundamental lines of Packard beauty admirably fitted for the further sweeping grace of custom treatment but more than that, mechanical systems uniquely built into chassis and motor insure the long lived, trouble-free ownership that is expected of so great a possession. + + To the pleasure of having such an unusual possession may also be added the delight of self expression in its final development. For the buyer of a Packard Custom Car may choose his own interior fabrics in just the pattern and shade he desires. He may select that exterior color combination which best expresses his own harmony of painting. Or he may even position certain conveniences of interior design to suit his personal taste. + + And this taste is amply met by the wide range of individual creations shown on the following pages. Since these illustrations can only hint at the true luxury and distinction of Packard Custom Cars, may we suggest that you ask your dealer for additional details in photographs, drawings or diagrams. Too, that you ask the man who owns one!



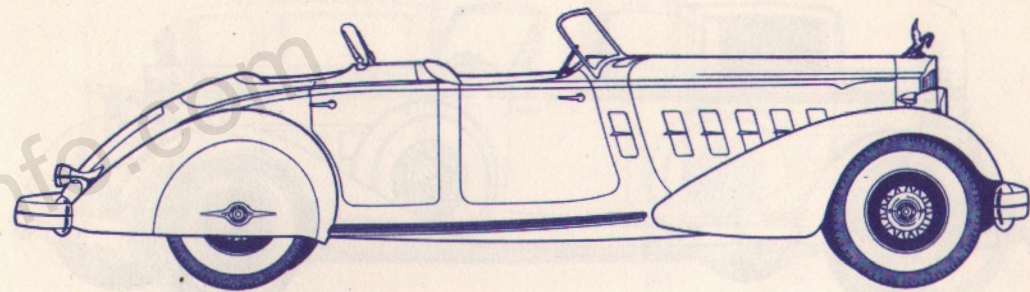
THE SPORTS COUPE

by Packard

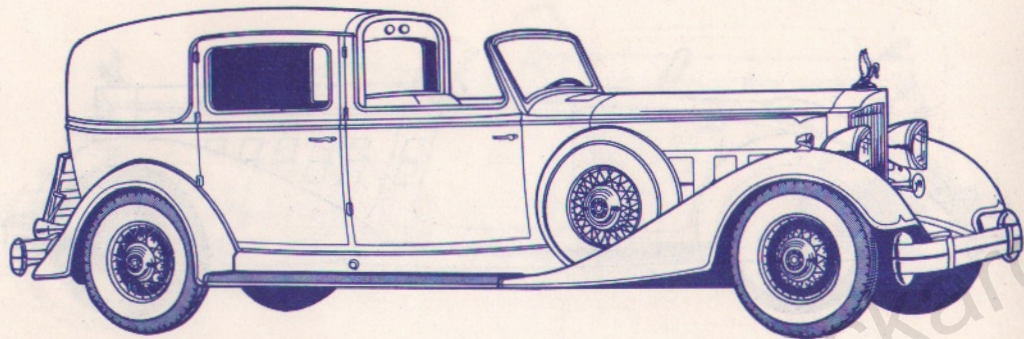
FOUR PLACES



THE SPORT RUNABOUT
by LeBaron
TWO PLACES STYLE 275



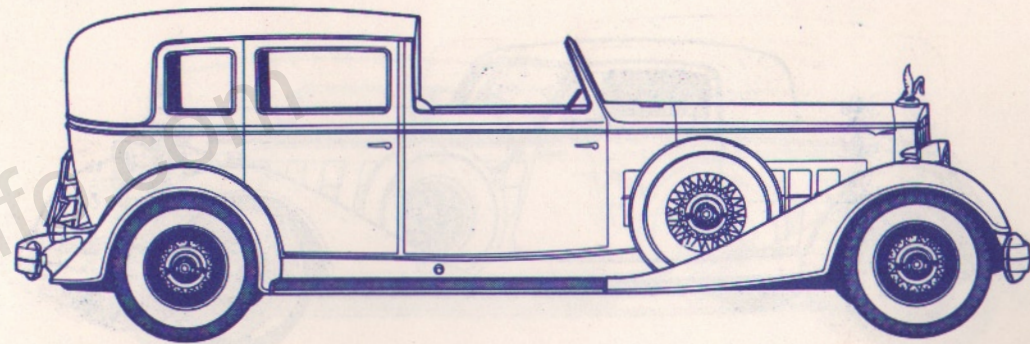
THE SPORT PHAETON
by LeBaron
FOUR PLACES STYLE 280



THE ALL-WEATHER CABRIOLET

by LeBaron

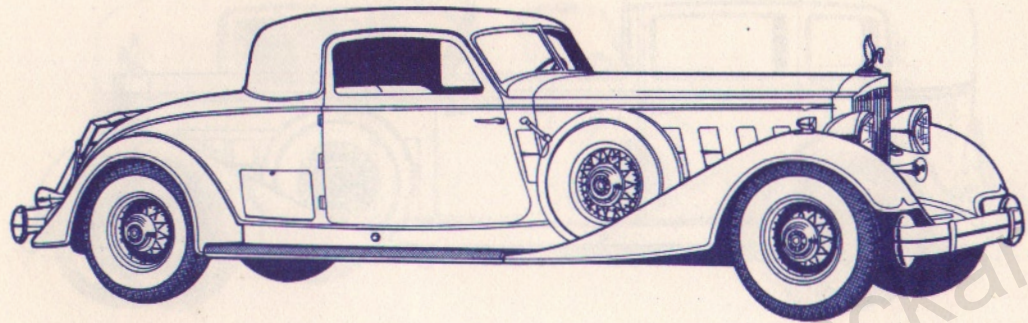
SEVEN PLACES STYLE 858



THE ALL-WEATHER TOWN CAR

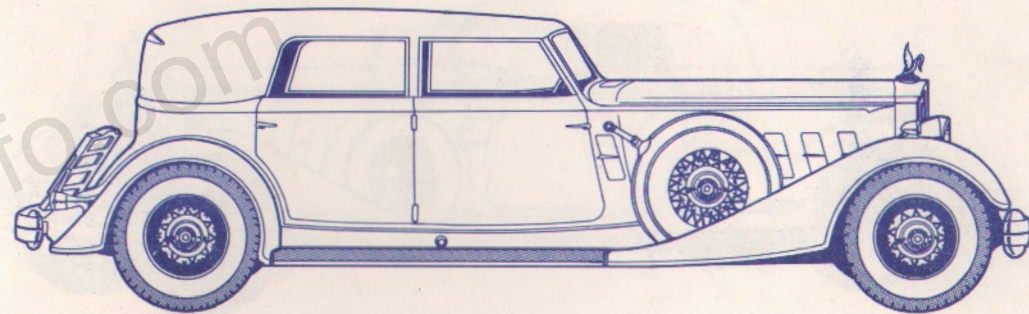
by LeBaron

SEVEN PLACES STYLE 859



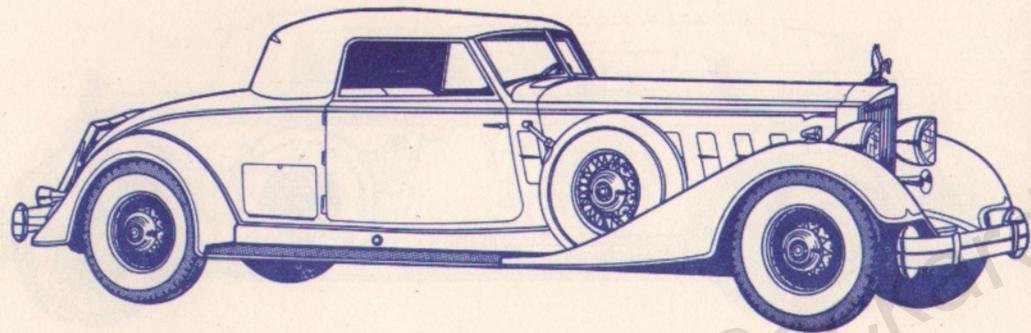
THE COUPE
by Dietrich

TWO OR FOUR PLACES STYLE 4068



THE CONVERTIBLE SEDAN
by Dietrich

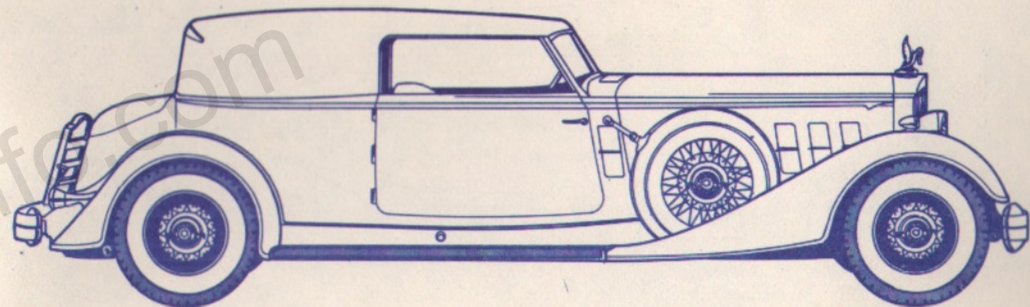
FIVE PLACES STYLE 4070



THE CONVERTIBLE RUNABOUT

by Dietrich

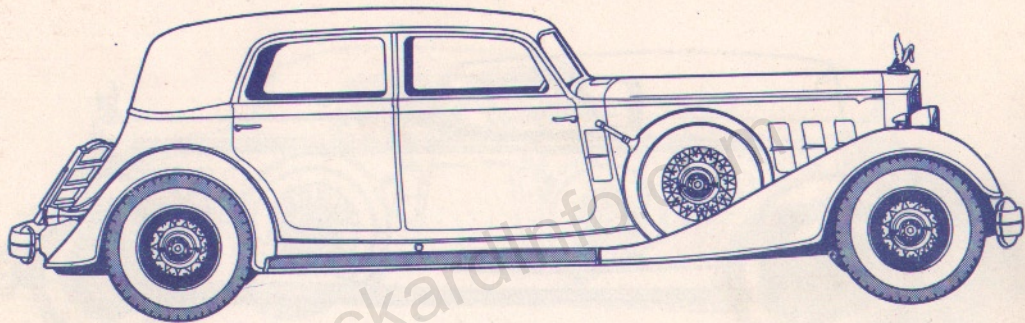
TWO OR FOUR PLACES STYLE 4071



THE CONVERTIBLE VICTORIA

by Dietrich

FIVE PLACES STYLE 4072



THE SPORT SEDAN

by Dietrich

FIVE PLACES STYLE 4182