

OWNER'S MANUAL

PACKARD
CUSTOM RADIO

WITH PUSHBUTTON TUNING

EIGHT TUBES INCLUDING RECTIFIER

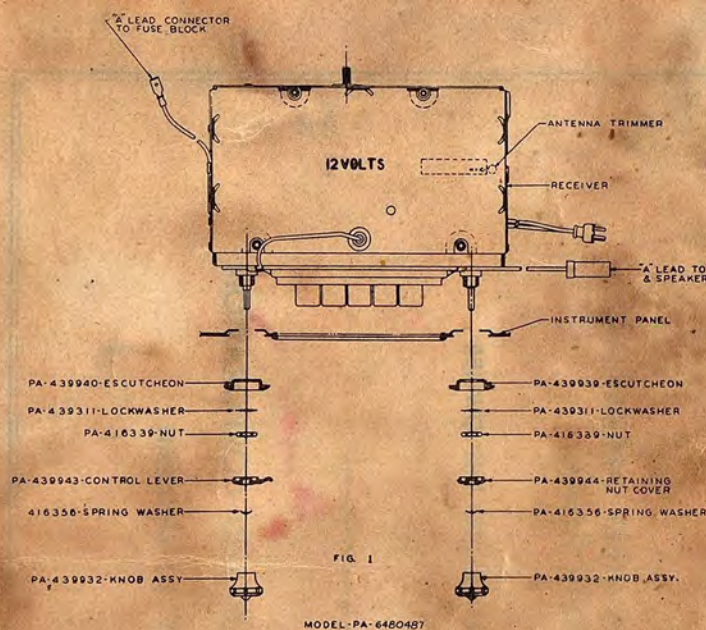
MODEL 6480487 CLIPPER

INSTALLATION AND OPERATING
INSTRUCTIONS

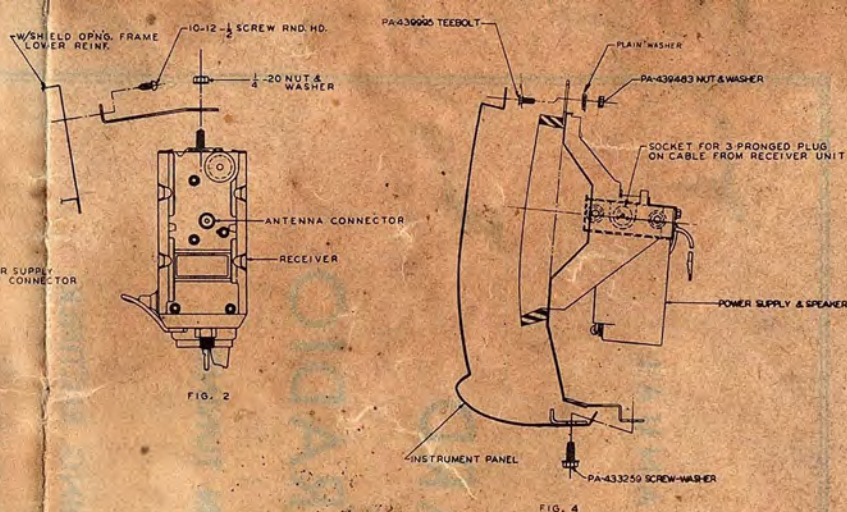
GIVE THIS MANUAL TO THE OWNER

STUDEBAKER-PACKARD CORPORATION

DETROIT 32, MICHIGAN



MODEL-PA-6480487



PUSH BUTTON RADIO INSTALLATION

- Remove the decorative cover (on the instrument panel) which covers the opening for the radio dial and controls by rotating the two speed nuts 90°.
- Mount the "L" shape bracket to stud on rear of control head using 1/4-20 nut and lockwasher. Lift set up behind the instrument panel and guide the volume control and manual control shafts through the instrument board openings. Attach the "L" bracket to the underside of defroster duct with #10 x 1/2 sheet metal screw. See Fig. 2.
- Put the control knob escutcheon cups on the shafts and attach with lockwasher and thin nut. See Fig. 1.
- Put the tone control lever on the left shaft. Then place spring washer on the shafts and push on knob until knob clip indexes with slot in shaft. See Fig. 1.
- Connect "A" lead to the terminal marked "radio" on the fuse block mounted on the heater plenum chamber or dash panel pad just to the right of steering column.
- Snap "tee" bolts to upper flange of instrument board on right side for mounting radio speaker and power supply. See Fig. 4.
- Lift power supply into place and attach at top with two #10 nuts, lockwashers and plain washers. Attach at bottom edge of instrument flange with 1/4 thread cutting screws.
- Attach connector from radio control head to power supply and speaker. Insert 7 1/2 amp fuse in fuse block.
- Plug antenna lead into the antenna connector on right side of control head as shown in Fig. 2.
- Turn the radio on and allow it to warm up with the antenna fully extended, tune in a weak station between 600 and 1000 KC and adjust the antenna trimmer for maximum volume. The antenna trimmer can be reached through a hole provided in the top of the glove box.
- Set the five push buttons as follows:
 - Turn the set on and allow to warm up for ten or fifteen minutes.
 - Select stations in order of their frequency. It is suggested that they be arranged with the lower frequency station at the left, etc.
 - Pull the button slightly to the left and out as far as it will go.
 - Manually tune in the desired station making certain that the signal is tuned in accurately.
 - Push the button in firmly to the end of its travel.
 - Repeat the same procedure for the remaining four buttons. Each station can be readily identified by the dial pointer which indicates the station frequency.
 - A station setting may be changed at any time by repeating the above procedure.

INTERFERENCE SUPPRESSION

IMPORTANT — Care in performing these operations will result in satisfactory elimination of ignition noise. Be sure that all condenser cases make good ground connection and that all connections are tight.

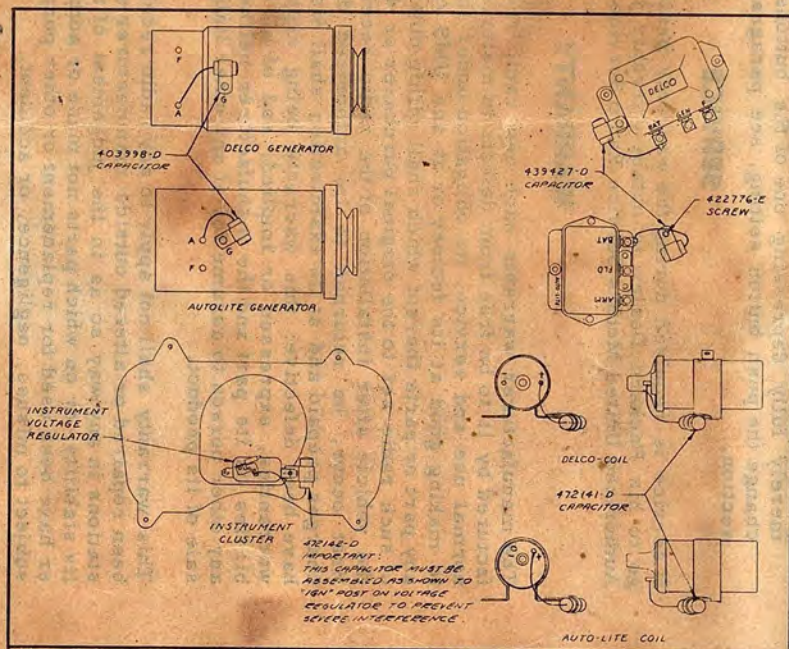


PUSH BUTTON RADIO INSTALLATION

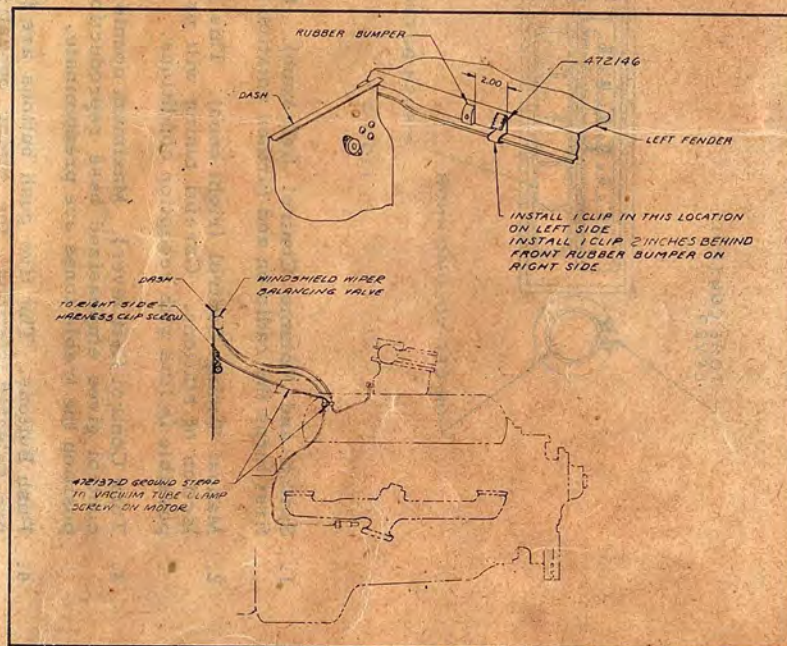
1. Remove the decorative cover (on the instrument panel) which covers the opening for the radio dial and controls by rotating the two speed nuts 90°.
2. Mount the "L" shape bracket to stud on rear of control head using 1/4-20 nut and lockwasher. Lift set up behind the instrument panel and guide the volume control and manual control shafts through the instrument board openings. Attach the "L" bracket to the underside of defroster duct with #10 x 1/2 sheet metal screw. See Fig. 2.
3. Put the control knob escutcheon cups on the shafts and attach with lockwasher and thin nut. See Fig. 1.
4. Put the tone control lever on the left shaft. Then place spring washer on the shafts and push on knob until knob clip indexes with slot in shaft. See Fig. 1.
5. Connect "A" lead to the terminal marked "radio" on the fuse block mounted on the heater plenum chamber or dash panel pad just to the right of steering column.
6. Snap "tee" bolts to upper flange of instrument board on right side for mounting radio speaker and power supply. See Fig. 4.
7. Lift power supply into place and attach at top with two #10 nuts, lockwashers and plain washers. Attach at bottom edge of instrument flange with 1/4 thread cutting screws.
8. Attach connector from radio control head to power supply and speaker. Insert 7 1/2 amp fuse in fuse block.
9. Plug antenna lead into the antenna connector on right side of control head as shown in Fig. 2.
10. Turn the radio on and allow it to warm up with the antenna fully extended, tune in a weak station between 600 and 1000 KC and adjust the antenna trimmer for maximum volume. The antenna trimmer can be reached through a hole provided in the top of the glove box.
11. Set the five push buttons as follows:
 - a. Turn the set on and allow to warm up for ten or fifteen minutes.
 - b. Select stations in order of their frequency. It is suggested that they be arranged with the lower frequency station at the left, etc.
 - c. Pull the button slightly to the left and out as far as it will go.
 - d. Manually tune in the desired station making certain that the signal is tuned in accurately.
 - e. Push the button in firmly to the end of its travel.
 - f. Repeat the same procedure for the remaining four buttons. Each station can be readily identified by the dial pointer which indicates the station frequency.
 - g. A station setting may be changed at any time by repeating the above procedure.

INTERFERENCE SUPPRESSION

IMPORTANT — Care in performing these operations will result in satisfactory elimination of ignition noise. Be sure that all condenser cases make good ground connection and that all connections are tight.



SUPPRESSOR INSTALLATION



CLIP INSTALLATION

OPERATION

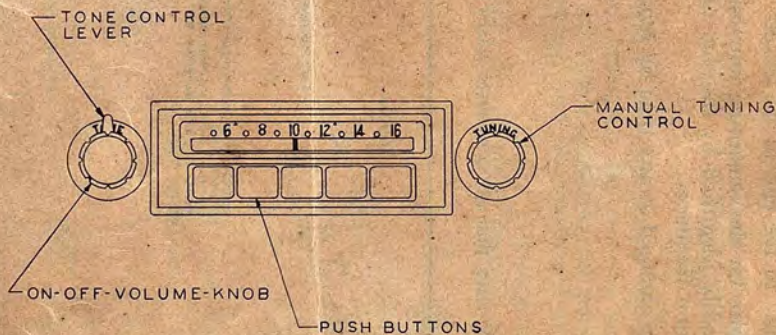


FIG. 3

1. Switch and Volume Control (left knob). Clockwise rotation of this first turns the radio on and further rotation increases the volume.
2. Manual Tuning Control (right knob). This control is for manual selection of stations. Careful tuning will produce the best reception possible in line with reception conditions.
3. Tone Control (left lever). Maximum counterclockwise position of this control gives emphasized bass reproduction, while in the clockwise position the treble tones are predominate.
4. Push Buttons. The five push buttons are for automatic tuning of five pre-selected stations, the tuning operation being accomplished by merely fully depressing one of the buttons as far as possible. To change the push button setting, see paragraph 10 of Radio Installation section.

SERVICE

If service is required during the warranty period, the car owner should go to his Packard Dealer to obtain warranty service or to the nearest Authorized United Motors Service Radio Service Station.

WARRANTY

The manufacturer warrants each new radio receiving set or part manufactured by it to be free from defects in material and workmanship under normal use and service, its obligation under this warranty being limited to making good at its factory or at any UMS Authorized Service Station any part or parts thereof which shall within ninety (90) days after delivery of such radio set to the original purchaser or 4000 miles of operation of the vehicle after installation of the radio receiving set, whichever shall first occur, be returned to its authorized dealer with transportation charges prepaid and at its examination shall disclose to its satisfaction to have been defective: this warranty being expressly in lieu of all other warranties, expressed or implied, and of all other obligations and liabilities on its part and the manufacturer neither assumes nor authorizes any other person to assume for it any other liability in connection with the sale of its product.

This warranty shall not apply to any radio receiving set which shall have been repaired or altered outside manufacturer's authorized radio service stations in any way so as in the judgement of the manufacturer to effect its stability, or on which parts not made or authorized by the manufacturer have been used for replacement or other purposes, nor which has been subject to misuse, negligence, or accident.