



MORE PARTS BUSINESS

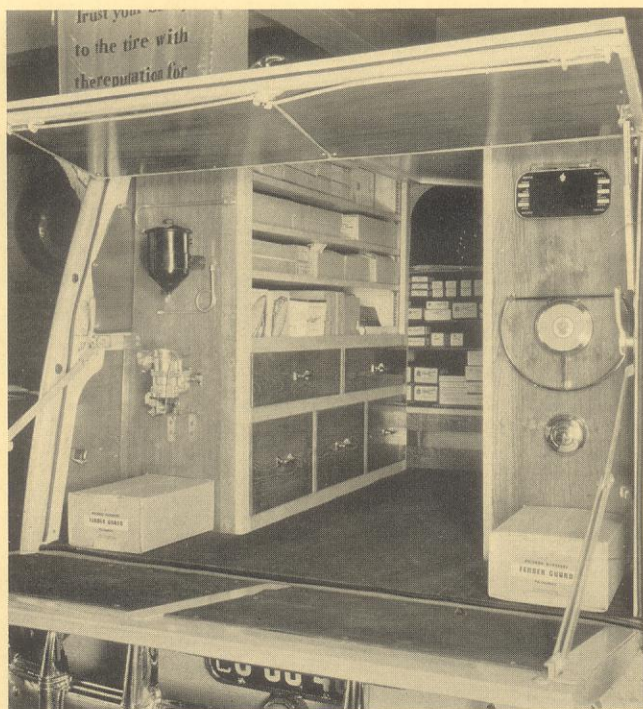
The Earle C. Anthony organization in San Francisco has done an outstanding job in the arrangement of their station wagon parts and accessory distribution equipment. The pictures tell most of the story. The car itself is equipped with all possible accessories.

On the inside, the cabinets and shelves were planned by Mr. Harker, Service Manager, and Mr. DuBroy, Manager of the Parts and Accessory Department, in such a way that they can be easily removed. They are anchored so they do not mutilate the interior of the station wagon. The signs are on flat steel and placed behind the window

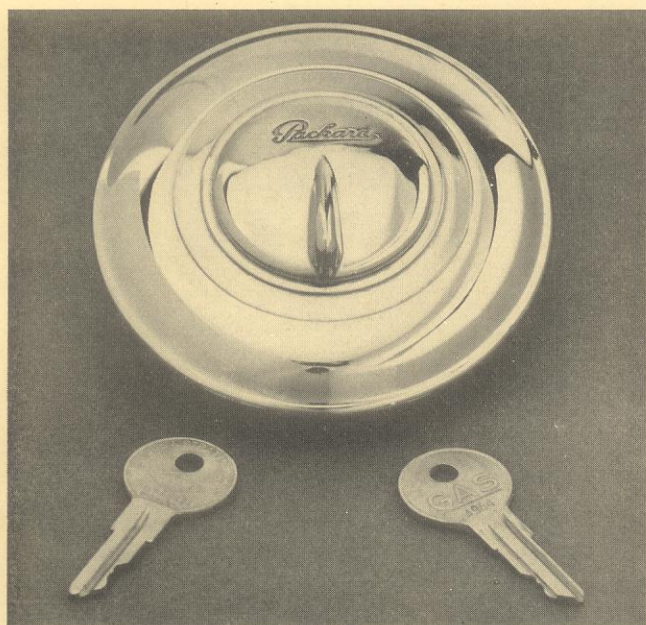
glass, using the screw holes already in the car.

An assortment of 175 fast-moving parts and 30 accessory items are carried. They have also placed the \$50 Packard parts assortment so that it will stand out when calls are made on independent service stations.

The station wagon is in the hands of Jack Loomis, whose training is such that he is able to check stock and assist in arrangement and ordering as well as selling parts and accessories. They feel that, through his efforts, parts and accessory sales to dealers and independents will show a substantial increase.



ACCESSORY OF THE MONTH



Gas Tank Locking Cap PA-311999

This chrome-plated cap will prevent thieves from stealing gasoline; but more important, the car thief cannot put more gas in the tank and, therefore, must abandon the car when the tank runs dry. Furthermore, the cap protects the gas, as it prevents any foreign matter from being unlawfully placed in the tank.

This cap can be sold easily in metropolitan areas—especially to people who use unguarded parking spaces, as do many apartment house dwellers. It cannot be forgotten, as the key cannot be removed until the cap is locked.

HAVE IT—SHOW IT—ASK THEM TO BUY!

STEERING RATTLE

We have found a steering rattle in 19th Series cars which is sometimes hard to locate, but which is very easy to correct.

The gear shift anti-rattler at the lower end of the steering column is secured to the column by two screws and in some cases the screws have been too long. This has permitted them to make contact with the steering post.

The correction is simply to shorten the screws or to use a flat washer under the lock washer in order to reduce the distance which the screws project inside the column.

DIRTY BUSINESS

"All ready for you, Mrs. Sullivan." The service manager smiled. "It runs like a top."

"Thank you." Mrs. Sullivan paid her bill without question, drew on her white gloves, and slipped behind the wheel.

Her 1940 Model One-Sixty ran like a watch. Those boys in the service department really knew how to fix it.

When Mrs. Sullivan got out of the car at the country club, her friends smiled—she didn't.

The grimy seat of a mechanic's breeches had left streaks on the upholstery which spotted her white tulle dress. The heel of her white wedgie had a scraping acquaintance with a gob of grease on the floor mat. The palms of her white gloves looked dirty brown like the inside of a monkey's hand.

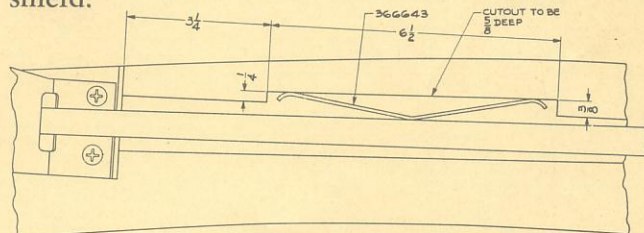
The service manager still sighs and wonders why he lost a profitable customer.

CONVERTIBLE TOPS

19th SERIES

The automatic top used on the 19th Series car is locked in position on the windshield when the handle in the center of the header bar is in a vertical position.

There have been some instances in which the locking mechanism has loosened in the operation of the car, permitting the top to lift off the windshield.



This can be corrected by the installation of the spring, piece number 366643, on the left side only, as shown in the illustration. The spring holds the rod on the left side in its down position, and in this position it is pulled inward so that it engages with the post at the corner of the windshield. The spring may be installed by removing the trim material, cutting a recess in the header bar and mounting the spring as shown.

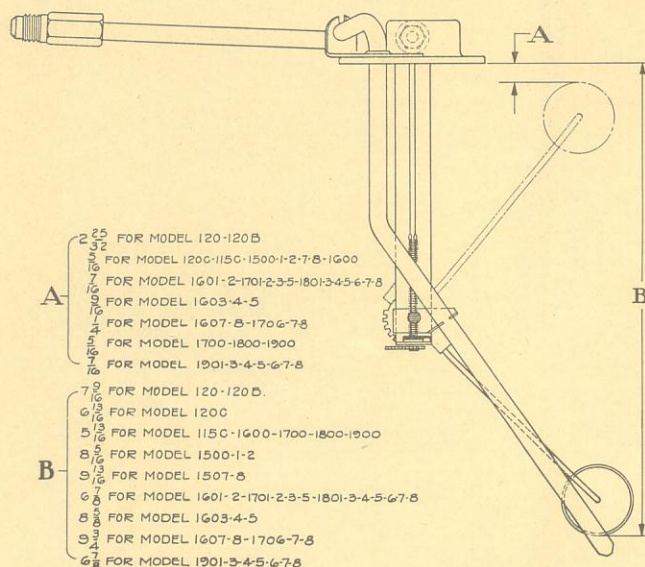
Tops which are now being built are equipped with this spring, and it would be possible to determine whether the top is so equipped by the operation of the locking handle. When the spring is in place its resistance will be distinctly felt in the movement of the handle.

It would be advisable to caution all your owners to see that the handles are properly locked when raising the top.

GASOLINE TANK GAUGES

The control type of gasoline gauge makes use of a float mechanism operating a rheostat in the head of the tank unit.

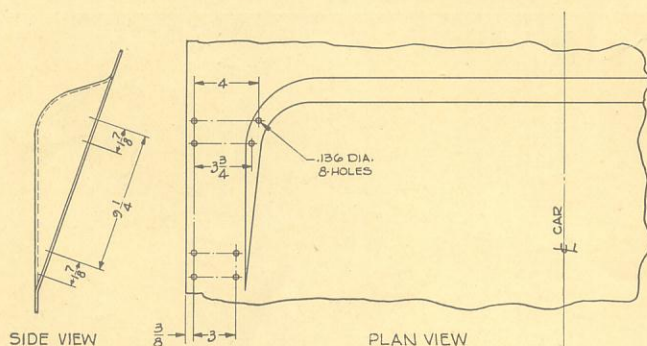
Due to the necessarily fragile construction of the tank unit it is impossible for us to guarantee that these units shipped from service stock will not be bent in handling or shipment.



Before making the installation of a tank unit, it is necessary that the cork float at the bottom of the wire arm be properly located in order that a correct reading may be shown, and this illustration indicates the distance from the top of the tank to both the top and the bottom of the float.

TOOL BAG HOLD-DOWN STRAP

18th SERIES OR PREVIOUS



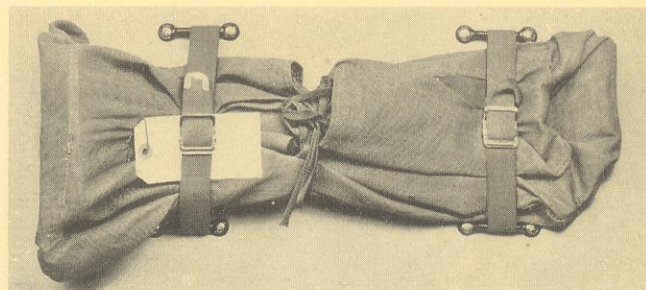
On cars equipped with fender well tires there is no adequate provision made for holding the tools. We have therefore added the hold-down strap equipment which will take care of this.

The material required is:

AA366609	Trunk—Tool Bag Hold-Down Strap	.40	2 Req.
AA366608	Footman Loop	.10	4 Req.
B6791	Footman Loop Screw	.04	8 Req.

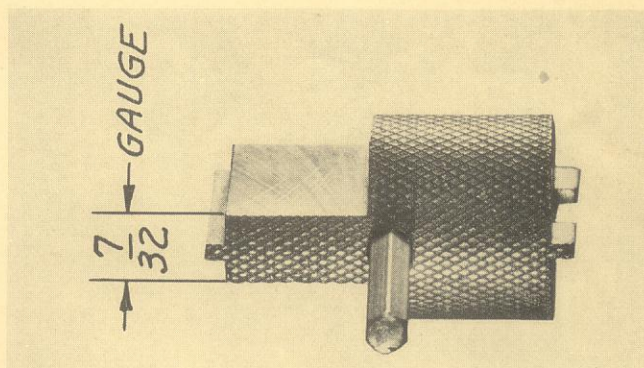
Suggested List \$1.52

The sketch will give you the desired information on location for installing the loops.



This equipment may, if desired, be used on other cars, in which case the location would be a matter of choice on the part of the owner.

ELECTROMATIC CLUTCH SCREW DRIVER AND WRENCH



Tool No. ST-10175, Model 1900-1-3, Sug. List \$1.00

Electromatic clutch screw driver and wrench shown in Service Letter, Vol. 14, No. 24, of December 15, 1940 is now obsolete. It has been redesigned and now has a screw driver on each end, and a 1/8" Allen set screw wrench in the center.

One end is for adjusting the flat-head knurled screw used on the first type cars, and the other end for adjusting the new type taper-head screw used on the later cars.

The 7/32" gauge is used for setting the adjustment screw, "I," as shown in Service Letter, Vol. 15, No. 2, of January 15, 1941.

MEETINGS

The boys in the Southeast have been having some interesting meetings with the assistance of Jack Harrison, who is back in shape again to everyone's delight.

Fine attendance records for distributors' and dealers' men are reported. Long trips and late hours prove that Packard men are really interested in talking over their problems and learning more about Better Packard Service.



MIAMI



JACK



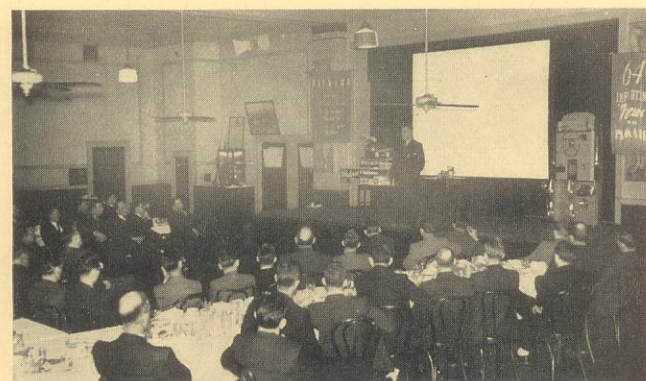
BIRMINGHAM



RICHMOND



ATLANTA



CHARLOTTE



JACKSONVILLE

SUGGESTIONS OR QUESTIONS ARE ALWAYS WELCOME. ADDRESS—EDITOR PACKARD SERVICE LETTER
