

SPECIAL "SELL MORE PARTS" BULLETIN

PACKARD PARTS for PACKARD CARS

PACKARD SERVICE for PACKARD OWNERS

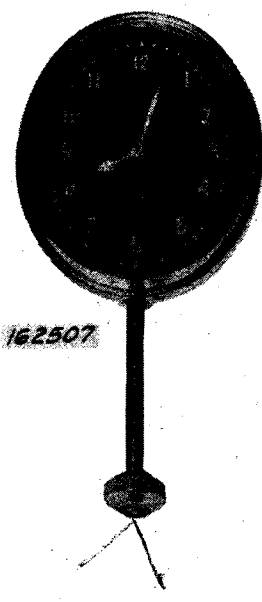
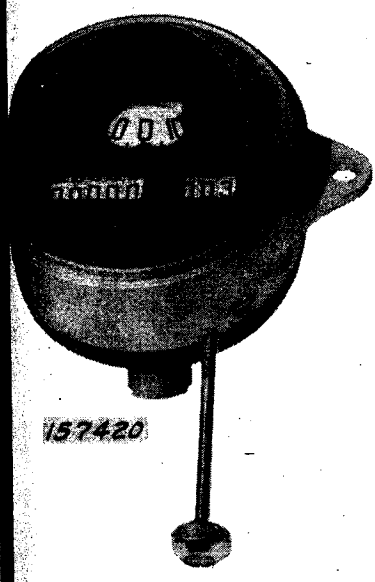
SERVICE STORES DIVISION  PACKARD MOTOR CAR COMPANY
DETROIT, MICH.

TO PACKARD DISTRIBUTERS AND DEALERS

NO. 125-A

ATTENTION OF Service Manager, Stores Manager
and Used Car Manager

DATE May 18, 1936



This bulletin cancels and supersedes Bulletin 125 of March 6, 1934. Only a limited number of the items listed below are available at these special prices. The clocks and speedometers are especially good buys. In most cases, a new unit will cost less than repairs to the old one. We urge you to keep this information in front of you, or jot down this bulletin number on your record cards for future reference. Your parts discount is indicated by the letter preceding the piece number.

No.	Name	Models	Suggested List Price
157420	Speedometer (NE)	526-33, 443, 626-33	2.81
136621	Speedometer with clock (Wal)	426-33, 336-43	11.98
133909	" " " (War)	326-33-36-43, 236-43, 426-33	11.98
162507	Inst. Bd. Clock (Buren)	526-33, 443	9.17
137506	" " " (Elgin)	326-33, 236-43	6.42
137505	" " " (Waltham)	326-33-36-43, 236-43, 426-33	9.17
105955	Rr. lamp door & glass asb.	905-6, 1005-6	1.30
11526	Dome light glass & rim	740-45	2.44
11306	Dome light Asb.	126-33-36-43, 226-33, 326-33	1.21
11307	" " switch	116	.50

Yours very truly,

PACKARD MOTOR CAR COMPANY

B. R. Horsley
B. R. Horsley

Manager Service Stores Division

WER
0)

All material listed is subject to prior sale.