

46T-17
Dealer 12
October 9, 1946

To: REGIONS, ZONES AND DEALERS

Subject: BUMPER JACK CAMPAIGN

The manufacturer of the bumper jacks furnished in the tool kits of all new 21st Series cars has made a change in the method of welding the lifting saddle to the elevator assembly.

Prior to this change the lifting saddle was secured by three spot welds on each side. The manufacturer has now added a weld along both the upper and lower edges of the saddle as shown on the reverse side of this bulletin.

Dealers should immediately call in and reweld the jacks supplied with all cars in their sales area shipped from the Factory prior to August 21, 1946.

Welding can be done by either acetylene torch or electric arc without disassembling the jack. After the weld has cooled, the saddle and elevator assembly should be painted to restore its original appearance and to prevent rusting.

All cars shipped by the Factory after August 21st will be equipped with jacks incorporating this change.

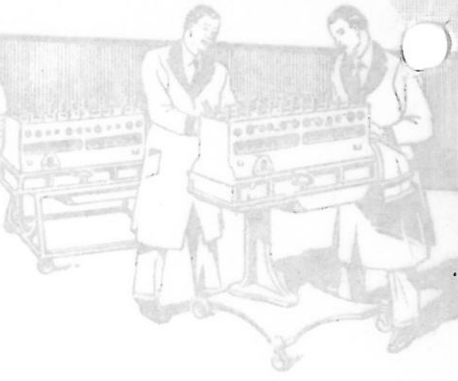
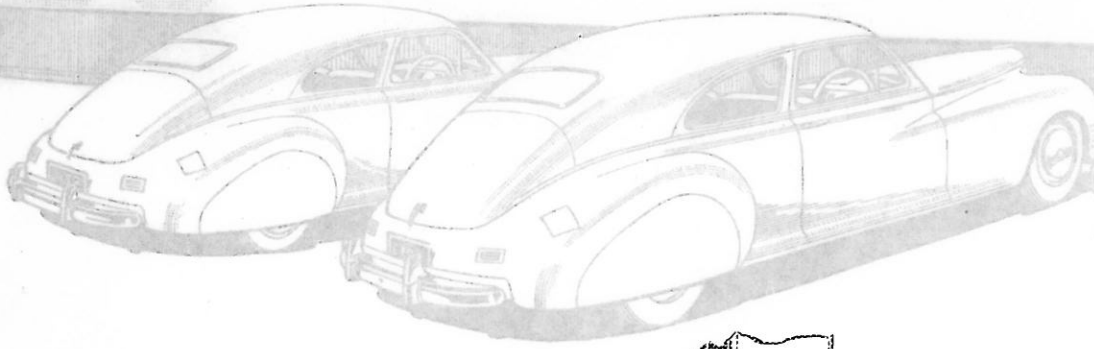
A labor allowance of .3 hours at 1/2 the Dealer's registered customer labor rate will be made for each jack repaired when application is made on the Request for Adjustment Form (V-487) in the regular way.

Very truly yours,

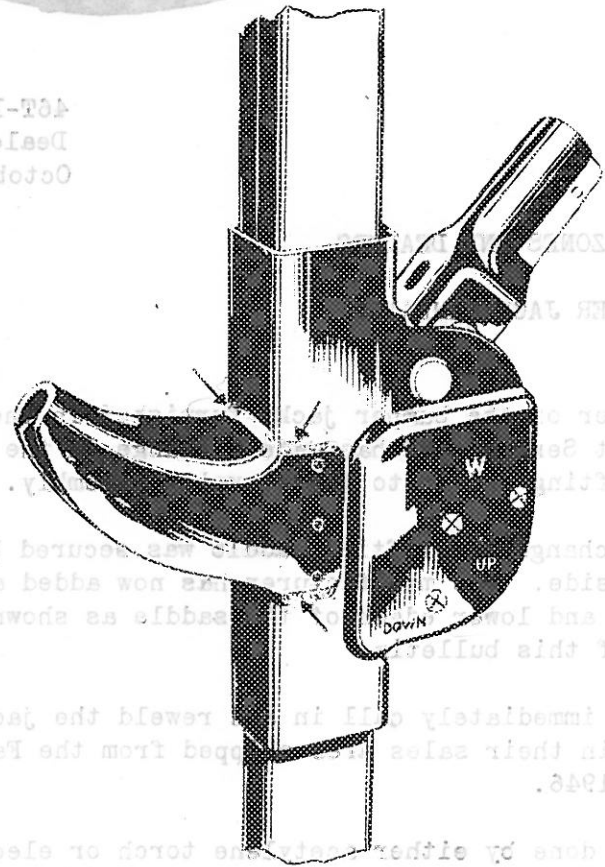
A handwritten signature in blue ink that reads "Theo. P. Thomas".

Theo. P. Thomas
Technical Service Manager

TPT:AD



46T-17
Dealer IS
October 9, 1946



To: REGIONS, ZONES, DISTRICTS, SALES OFFICES
 Subject: BUMPER JACK


The manufacturer of all new 1946 Packard Sedans and Packard Sedan Coupes is now adding a method of welding the bumper jack to the bumper assembly. Prior to this change, the bumper jack was secured by three spot welds on each side. The new method now adds a weld along both the upper and lower edges of the bumper saddle as shown on the reverse side of this bulletin.

Dealers should immediately advise their customers in their sales literature to August 31, 1946.

Welding can be done by either using an oxy-acetylene torch or electric arc without disassembling the jack. After the weld has cooled, the bumper and elevator assembly should be painted to restore its original appearance and to prevent rusting.

All cars shipped by the factory after August 31st will be equipped with jacks incorporating this change.

A labor allowance of .3 hours at 1/2 the Dealer's registered customer labor rate will be made for each jack repaired when application is made on the Request for Adjustment Form (V-487) in the regular way.

Very truly yours,

 Theo. P. Thomas
 Technical Service Manager

TTT:AD