

Packard **SERVICE TECHNICAL** **Bulletin**

50T-21, Dealer 16
May 12, 1950

To: ZONES AND DEALERS
Subject: HYDRAULIC DISTURBANCE IN ULTRAMATIC DRIVE UNITS

A hum or whine, noticeable below approximately 15 MPH on deceleration only, occasionally may be encountered in Ultramatic Drive equipped vehicles.

This condition, when it exists, is a hydraulic disturbance which is created inside the transmission unit and then transmitted to the oil cooler lines where it is amplified.

Cars produced after April 13, 1950 are equipped with additional rubber insulators at the transmission end of the cooler lines to dampen out the disturbance should it develop. The locations of the insulators are shown on the reverse side of this bulletin.

An insulator kit, part number 410885, is available to correct this hydraulic disturbance when it exists in vehicles in service.

To install the insulators, first remove and discard the original clips at points "A" and "B".

Place insulators around the oil lines at point "A" positioning them so that the split in the insulator is horizontal or, in other words, along the side of the lines.

Anchor the lines to the motor support using the new clip, screw, nut, and washer supplied in the kit. These parts are installed by placing the clip over the insulators, inserting the screw through the clip and motor support from the top, and then adding the washer and nut. Placing the nut in a socket with an extension bar will facilitate starting the nut.

Add insulators at points "B" and "C". No clips are used at these points. It is important that the lines do not contact the "X" member, the frame sub-channel, or the body floor pan at these points.

The detail parts which make up the kit are listed below.

410885 Transmission Oil Cooler Tube Assembly Insulator Kit

This kit includes

- 426753 Tube Assembly Clip (1)
- 426752 Tube Assembly Clip Insulator Hose (4)
- G 100001 Screw (1)
- G 117047 Nut (1)
- G 103339 Washer Plain (1)

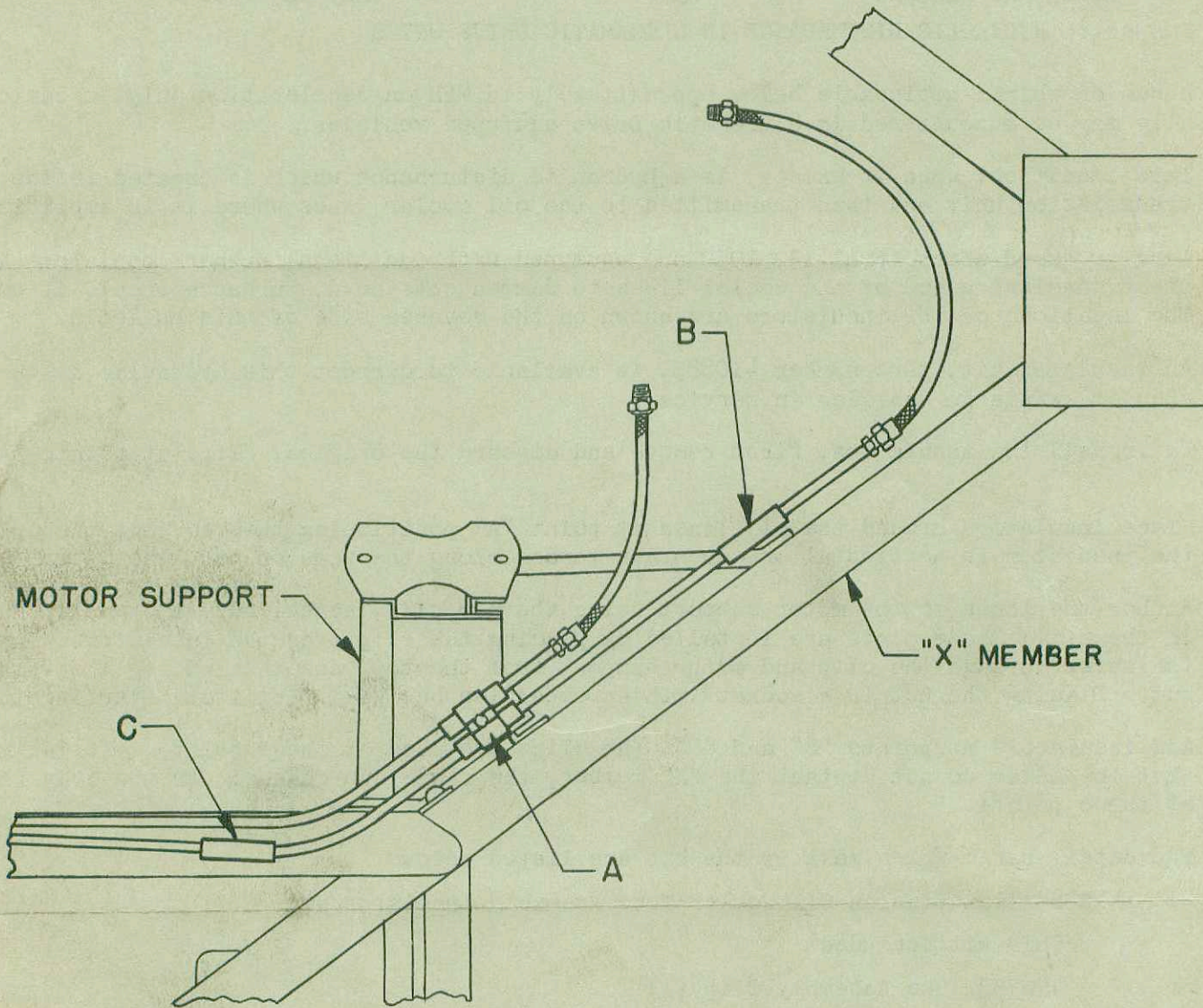
Yours very truly,

J. A. Carr
J. A. Carr, Manager
Parts and Service Department

AED:ljk



MOTOR SUPPORT



"X" MEMBER

C

B

A