

**P**ackard **SERVICE TECHNICAL**  
Bulletin

55T-18  
May 18, 1955

To: ZONES

Subject: TORSION-LEVEL SUSPENSION REAR LOAD ARM LINKS

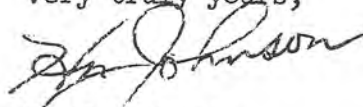
A recent change was made in the rear load arm of Torsion-Level Suspension cars to prevent any possible chance of the load arm becoming unseated from the rear links.

The attached illustration indicates the position of the retaining pin (part number 445393), which can be installed by drilling a 3/8" hole through both sides of the links.

It would be well to install these pins on cars that are known to be extremely abused by owners or dealers.

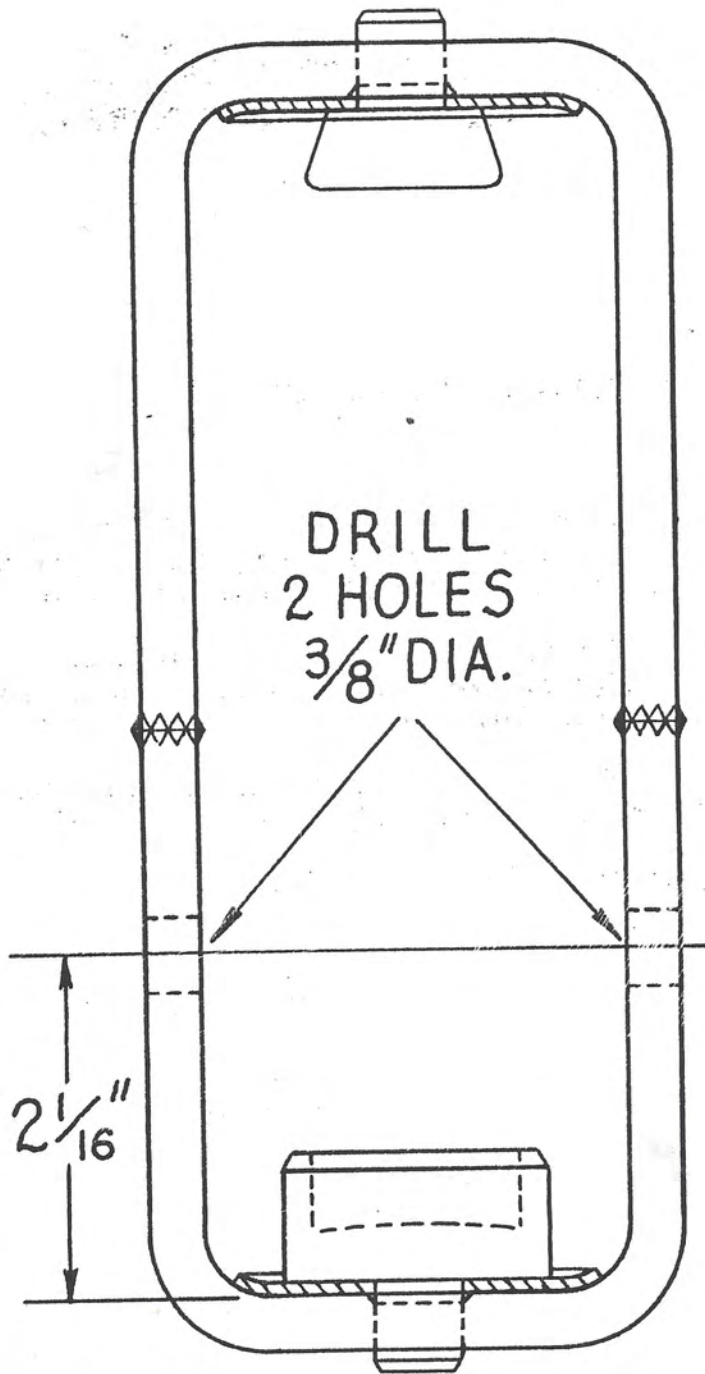
A campaign on this is not required.

Very truly yours,



H. N. Johnson  
Assistant Service Manager

HNJ:bjm  
ATT.



REAR LOAD ARM LINK  
ASSEMBLY