

PACKARD MOTOR CAR COMPANY
DETROIT, MICHIGAN

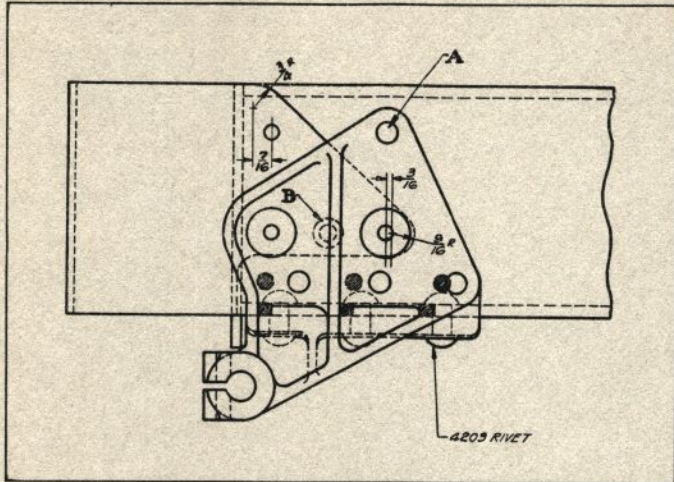
February 21, 1922

TO PACKARD DISTRIBUTERS

SUBJECT

FRONT SPRING FRONT BRACKETS—EC TRUCK

To be noted and checked by	



A new design front spring front bracket, which is already available in service stock, has been developed for the size EC truck. The new bracket will go into production shortly. As can be seen from the illustration, the new design has better rivet spacing, and attaches to the frame side member above as well as below the center line of the web.

In making the installation, the old bracket should first be removed, and all of the old rivet holes filled by welding, and the web surface made plane and smooth. The rear upper corner of the bumper bar should then be sawed off diagonally, as shown, in order to expose the rivet hole in the frame marked "A", since this hole is used in mounting the new bracket. The round headed rivet remaining in each end of the bumper bar assembly at "B" must then be removed and the holes countersunk to take Pc. No. 5161 rivet, in order to permit the bumper bar to clear the new spring bracket.

When installing the new unit, the bracket may first be temporarily bolted on at "A", since this is the only one of the old holes used with the new mounting. The remainder of the holes can then be located and drilled. The new bracket, like the old, should be secured to the frame by careful hot riveting. Seven rivets, Pc. No. 4203, are required per bracket.

Only the new style bracket will in the future be supplied from service stock, and the piece numbers listed in the latest issue of the truck service parts list cover the new design.

Yours very truly,
PACKARD MOTOR CAR COMPANY,

H. N. Davock

H. N. DAVOCK,
Mgr. Technical Service Department.

Any references herein, to future business, are made subject to the continuance of the existing agreement between the Manufacturer and the Distributer