

PACKARD MOTOR CAR COMPANY

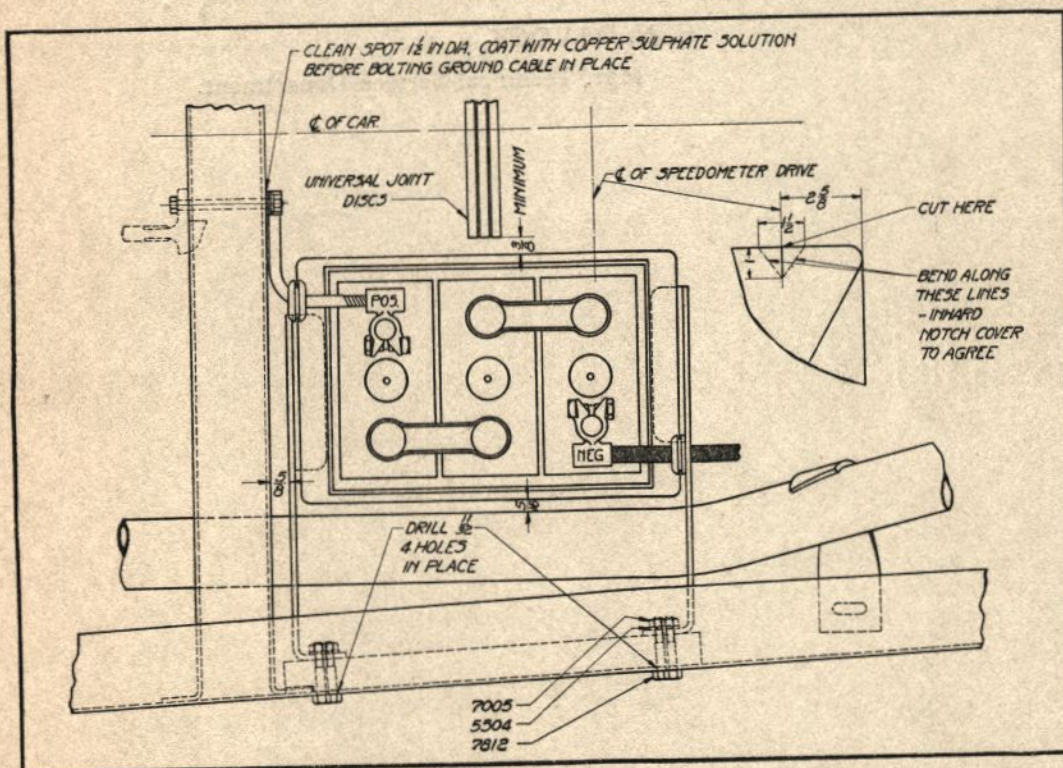
DETROIT, MICHIGAN

May 23, 1922

TO PACKARD DISTRIBUTERS

SUBJECT

APPLICATION OF MODEL 126 BATTERY CASE TO MODEL 116



Several inquiries have come to us regarding the possibility of attaching to the model 116, the steel battery box which is used on the 126 and 133. This can be done without difficulty.

In making the installation, a wooden filler block, which we are prepared to furnish, is used between the battery box brackets and the frame channel in order to move the box in far enough to clear the exhaust pipe. The box and the box cover must be notched to clear the speedometer cable, as shown in the illustration.

When this installation is made, we advise that the 126 type of battery ground cable be

used. This cable is a short, flexible lead which attaches to the frame cross channel. In making the attachment, great care should be taken to see that the cross channel is thoroughly cleaned before the ground cable is bolted on, so that an effective ground contact will be made.

For the complete installation, the following parts will be required:

- 1 121596—Battery Box with Brackets assembled.
- 1 123278—Battery Box Bracket Spacer.
- 4 7812—Bolts.
- 4 5504—Lock Washers.
- 4 7005—Nuts
- 1 121702—Battery to Ground Cable Assembly.
- 1 7813—Bolt.
- 1 7005—Nut.
- 1 5504—Lock Washer.

NOTE:—After making a battery installation, the terminals should always be coated to prevent corrosion, and we are advised by the Prest-O-Lite Company that the formula given below will give results superior to the vaseline or cup grease usually used:

For each pound of cup grease or vaseline, mix one-half pound of sal-soda. After thoroughly mixing, add enough liquid ammonia to make a paste about the consistency of vaseline. Due to evaporation of ammonia, it may be necessary to add a small amount now and then to bring up to proper consistency.

Yours very truly,

PACKARD MOTOR CAR COMPANY.

H. N. Davock.

H. N. DAVOCK,

Mgr. Technical Service Department.