

REFER TO THIS LETTER BY NUMBER

# PACKARD MOTOR CAR COMPANY

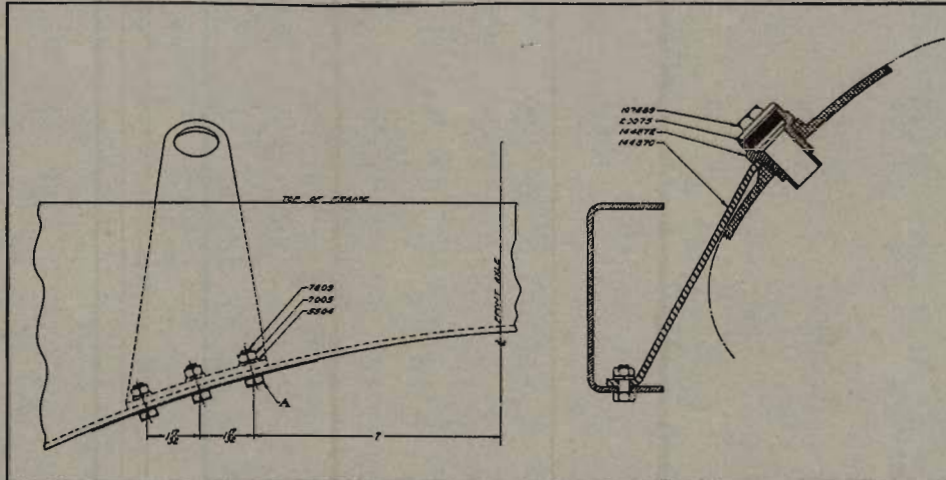
## DETROIT MICHIGAN

October 29, 1926.

To Packard Distributors and Dealers.

Subject, Motor to Frame Brace.

TO BE NOTED AND INITIALED BY



All Packard Sixes are now equipped with a motor to frame brace which secures the right front end of the crank case to the frame as shown in the illustration.

This bracket serves to stiffen the forward end of the frame, and reduces the movement of the radiator on rough roads or at high speeds. It may be installed

where the customer criticises the radiator movement and it also will be found useful in controlling wheel shimmy because the greater rigidity which it imparts to the frame will help the stabilators to control the movement of the axle and wheels.

The installation should be made in the following manner:

Remove the chain inspection plug in the crank case front end.

Loosen and remove the front bolt holding the crank case mud guard to frame.

Install the new inspection plug and mount the bracket on the crank case. Be sure that the bracket is toward the front of the radiator as far as possible so that it will fit properly on the frame when tightened.

Drill the forward hole at the lower end of the bracket with a  $21/64$ " drill using the mud guard to frame bolt hole to locate the hole in the bracket.

Install a  $5/16$ " bolt, nut and washer and tighten.

Drill the two remaining holes in the frame and the bracket as shown in the illustration, install the remaining bolts and make sure that both the upper and lower ends of the bracket are absolutely tight.

In ordering the installation the following parts are required.

- |                                     |                               |
|-------------------------------------|-------------------------------|
| 1—107889 Flange Plug                | 1—144870 Motor to frame brace |
| 1—20075 Gasket                      | 3—7809 Bolt                   |
| 1—144872 Motor to frame brace screw | 3—7005 Nut                    |
| 3—5504 Lock Washer                  |                               |

These parts will be furnished without charge, but they should be ordered only in a reasonable quantity, and further orders should be placed as the parts are actually required for installation. The standard time for the operation is 1.6 hours.

Yours very truly,

PACKARD MOTOR CAR COMPANY,

*H. N. Davock*

H. N. DAVOCK,  
Service Manager.

HND:CN