

PACKARD MOTOR CAR COMPANY

DETROIT MICHIGAN

May 6, 1930.

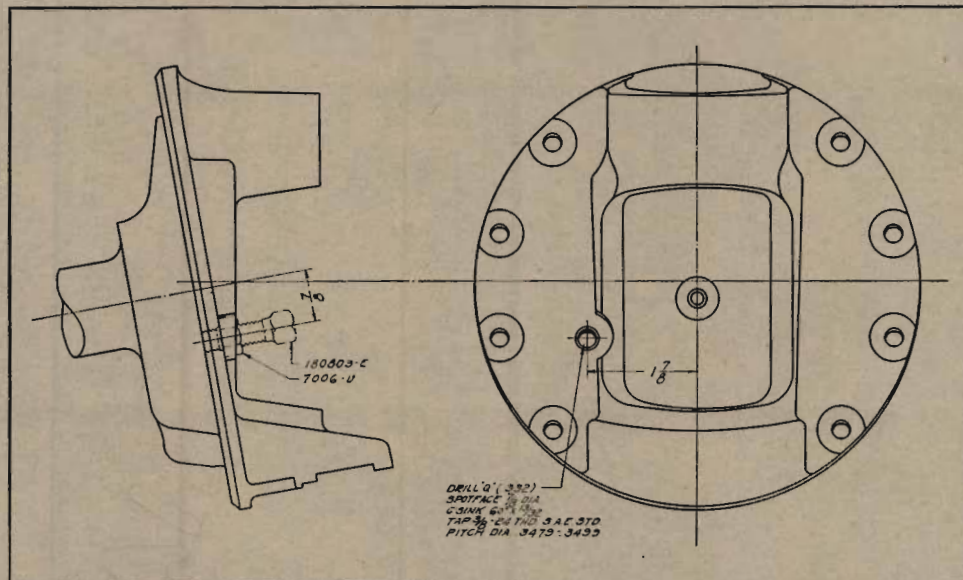
To Packard Distributors and Dealers

Subject FRONT AXLE STEERING KNUCKLE STOPS

TO BE NOTED AND INITIALED BY

Gentlemen:

A change has been made in the front axle design of the current model cars, and the steering knuckle stops which were formerly located in the end



of the axle are now mounted on the steering knuckle. This change went into effect as follows:

726-33 Frame—No. 300027
 740 Frame—No. 186316
 745 Frame—No. 185682

If a new front axle is ordered from the service stores division and assembled in a car with the old style steering knuckles, it will be necessary to install the stop screws in the knuckles as shown in the accompanying illustration. The following parts are required for each car:

2—180803 Steering Knuckle Stop Screw
 2— 7006 Lock Nut

When new steering knuckles are mounted on the old style axle the stop screws in the axle will be retained, and the stop screw holes in the steering knuckle will not be utilized.

Yours very truly,

PACKARD MOTOR CAR COMPANY.

T. A. Stalker

T. A. Stalker,
 Mgr. Technical Department.

TAS:N