

The Ride that Rules the Road!

TORSION-LEVEL RIDE



PIONEERED AND PROVED BY **PACKARD**

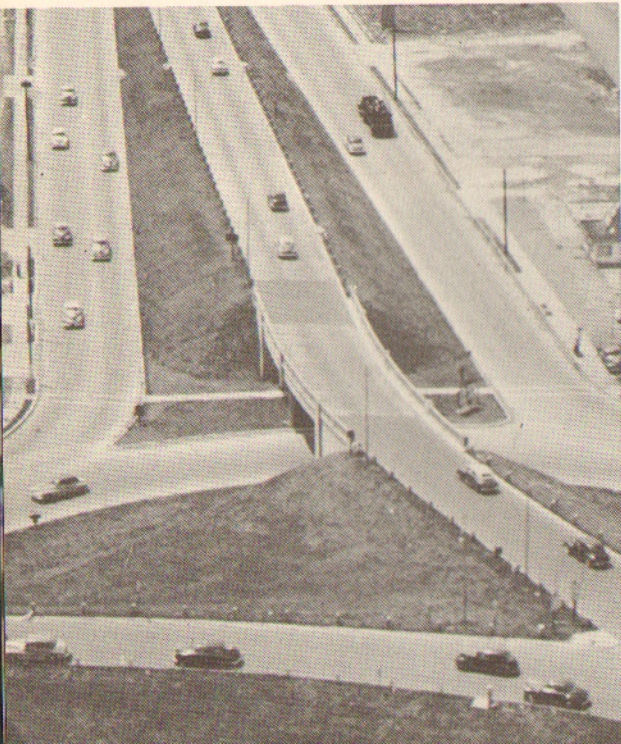


TORSION-LEVEL RIDE...

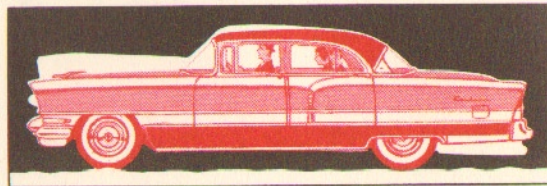
Unmatched
Comfort, Stability,
Handling Ease,
Safety,
Wherever You Drive

In famous Torsion-Level Ride is the long-sought answer to the inadequacies of ordinary suspensions. Pioneered, proved and now still further advanced by Packard creative engineering, Torsion-Level Ride offers you relaxed comfort and positive control never before possible in an automobile. Over *any* road . . . in *any* driving situation . . . nothing on coil and leaf springs can compare with Torsion-Level Ride. *It even beats riding on air!*

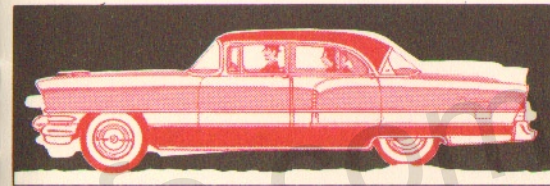
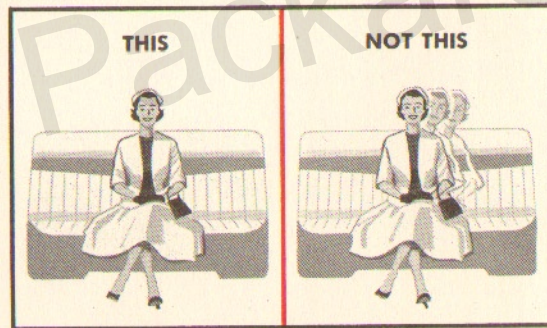
TORSION-LEVEL RIDE



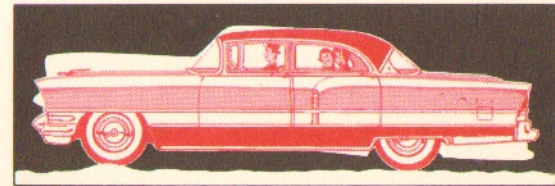
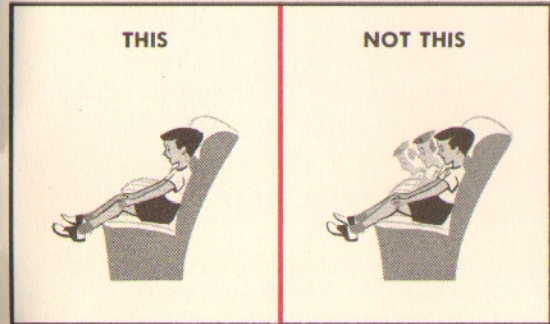
What it Does . . .



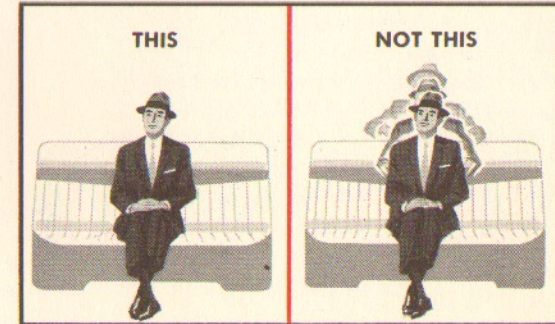
No more uncontrolled "heeling over" of car body in sharp turns, steep curves. You sit back and relax, confident that the ride will be smooth, flight-level.



Greatly reduced rear-end pitch in sudden stops. With Packard-proved Torsion-Level Suspension, braking is "heads-up," you remain comfortably seated.



Less jolt, jounce or pitch over bumps, dips, other road faults. Torsion-Level Suspension absorbs road shock *before* it can reach either the car body or you.



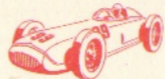
TORSION-LEVEL RIDE

PRINCIPLE PROVED IN MILLIONS OF MILES OF DRIVING



In principle, of course, torsion bar suspensions are not new. They have been used with great success for years on American race cars, foreign sports cars, and even on World War II tanks.

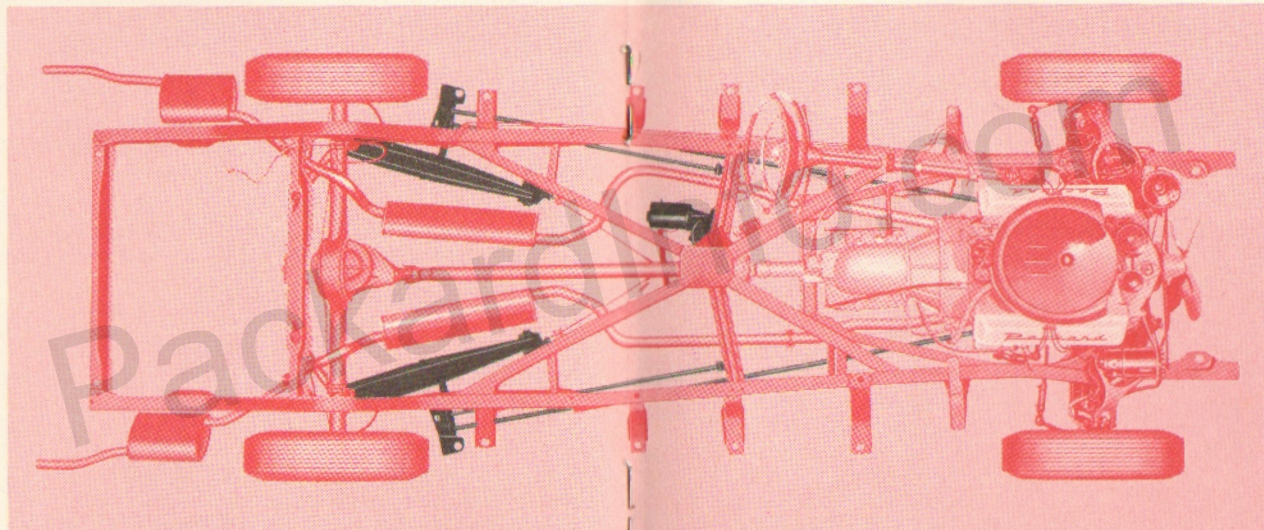
What *is* new is the Packard concept of this principle on passenger cars—an inter-connecting system of torsion bars linking front and rear wheels, and coordinating their movements to absorb road shock.



This is Torsion-Level Ride . . . proved by owners of thousands of Packard-built cars in every section of the country.



What it Is . . .

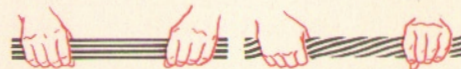


Full-length torsion bars, at each side of chassis, connect front and rear wheels, makes them work as a team to smother bumps and road shocks. At

A Coordinated Torsion Bar Suspension Which Smooths The Road . . .
Levels The Load—Automatically . . . Adds Immeasurably To All-Round Driving Performance

COIL AND LEAF SPRINGS ELIMINATED

In place of the up-and-down flexing of coil and leaf springs, torsion bars in the Packard suspension system gently but firmly absorb road shocks through their twisting action.



This action is easily demonstrated with a short length of rubber hose (as shown). Holding one end firm, twist the other up or down (simulating wheel movement over a bump or dropping into a chuck hole.) Resistance to twist in the hose is the same as in the torsion bars. Result—just as your hands, the wheels are forced back to their original position by torsion action.

center of chassis is power-controlled Levelizer which automatically maintains car at ideal ride level, regardless of passenger or luggage load.

TORSION-LEVEL RIDE



AUTOMATIC LEVELIZER

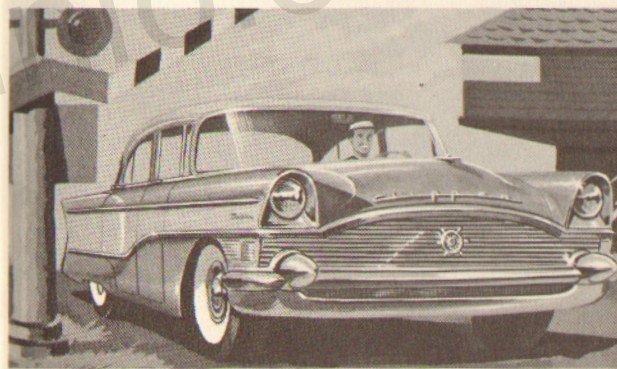
Equally important as "smoothing the road" is "leveling the load," and this is the job of the exclusive Levelizer. Operating automatically, the Levelizer raises or lowers the car to compensate for changes in passenger or luggage load, maintaining the car at constant ideal ride level.



Under full load all cars sag at the rear. This is ride level of coil-and-leaf-spring suspension.

Levelizer adjusts for full load in just 7 seconds. This is ideal ride level of the famous Torsion Suspension.

Even-Keel Starts and Stops
Sure-Footed Stability in Curves
... Tight, Flat Cornering

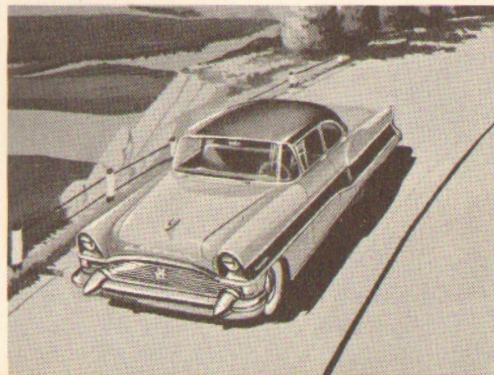


Hit the brakes and you stop swiftly, surely
... rear-end pitch is greatly reduced.



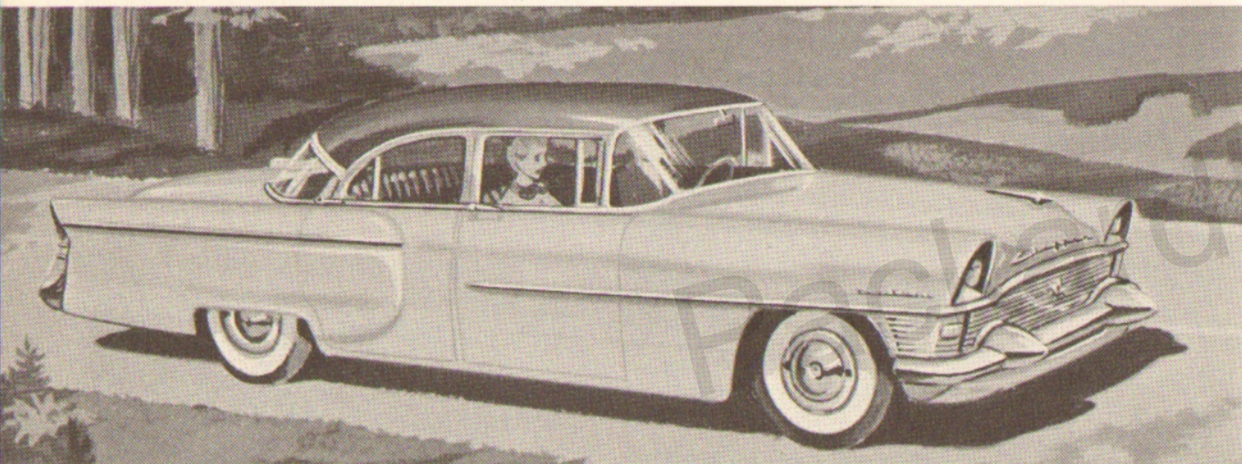
Give 'er the gun and you take off
on an even keel ... level and smooth.

Rounding curves or cornering, you have
amazing stability and handling ease.



TORSION-LEVEL RIDE

Beats Riding on Air!



Not a compromise with the past, nor an untried experiment of the future . . . but a proven and perfected new concept of

luxurious motoring comfort and performance. This is famous Torsion-Level Ride, and *nothing* else can compare with it.

Drive the *New* **PACKARD**
or '56 **CLIPPER**

There is but one way you can know the truth of all we have said in the preceding pages, and that is simply by trying the famous Torsion-Level Ride for yourself.

Be prepared to be amazed—be ready for the most thrilling experience you've ever had in an automobile. We promise you this and much more with Torsion-Level Ride in either the *new* Packard or '56 Clipper.

LET THE RIDE DECIDE



You Ride as You *Never* Rode Before!

MASS
Sales Representative FRED KAMINSKI
Tel. ASpinwall 2-4500

TORSION-LEVEL RIDE



EXCLUSIVE ON

THE *NEW* PACKARD
AND CLIPPER